



PROFESSIONAL CARE

powered
by **BRAUN**

OXYJET+ 3000





中文 6

English 10



如需了解更多产品信息

请拨打博朗售后服务热线：8008201357

或登陆我们的网站：www.oralb.com

www.braun.com

www.service.braun.com



0 800 783 7010



1 800 509 448

Internet:

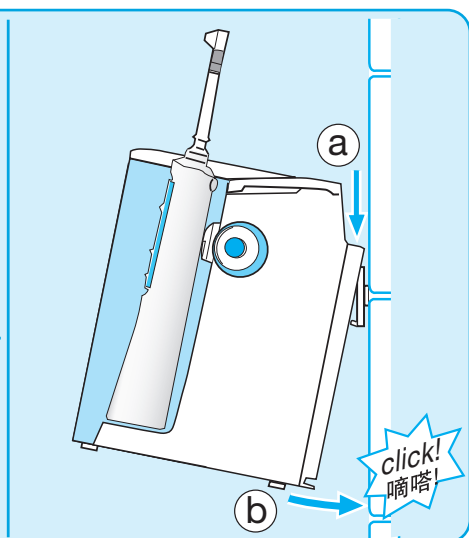
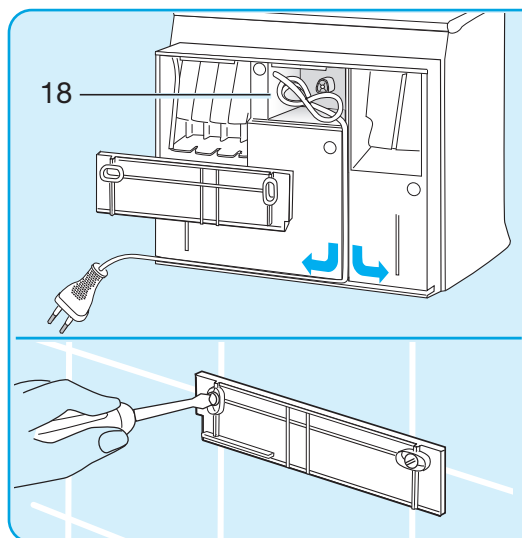
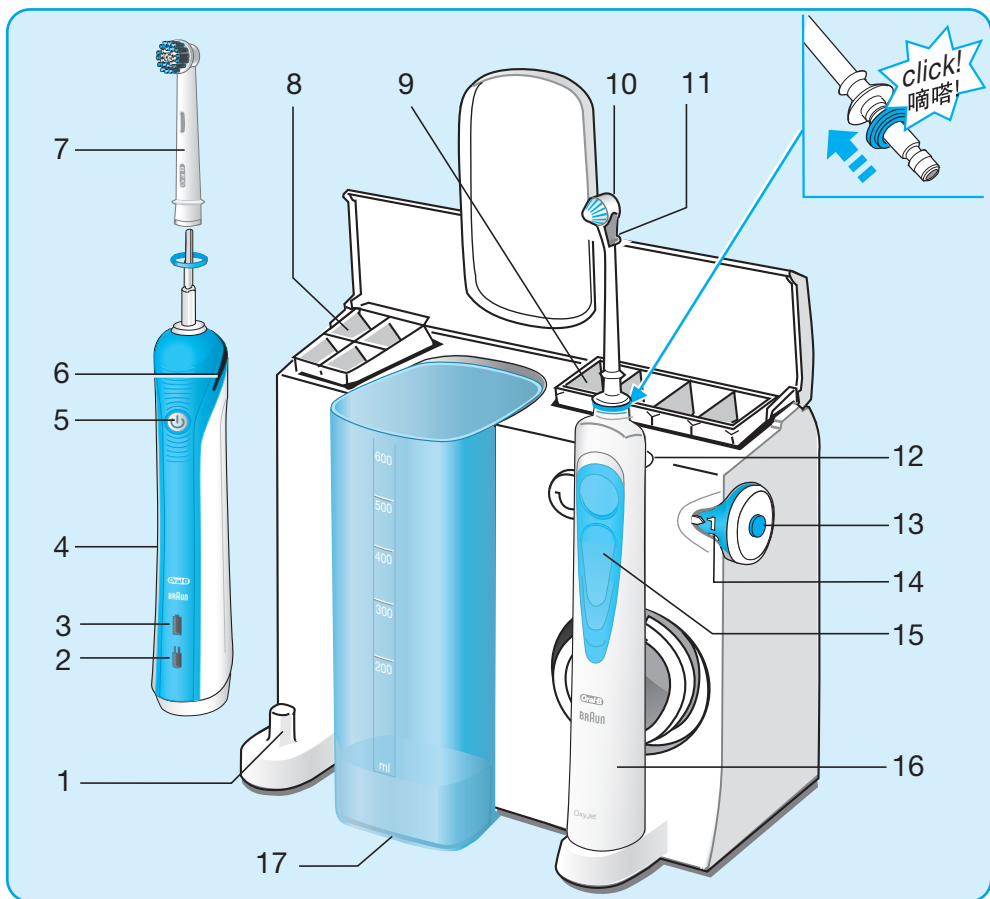
www.oralb.com

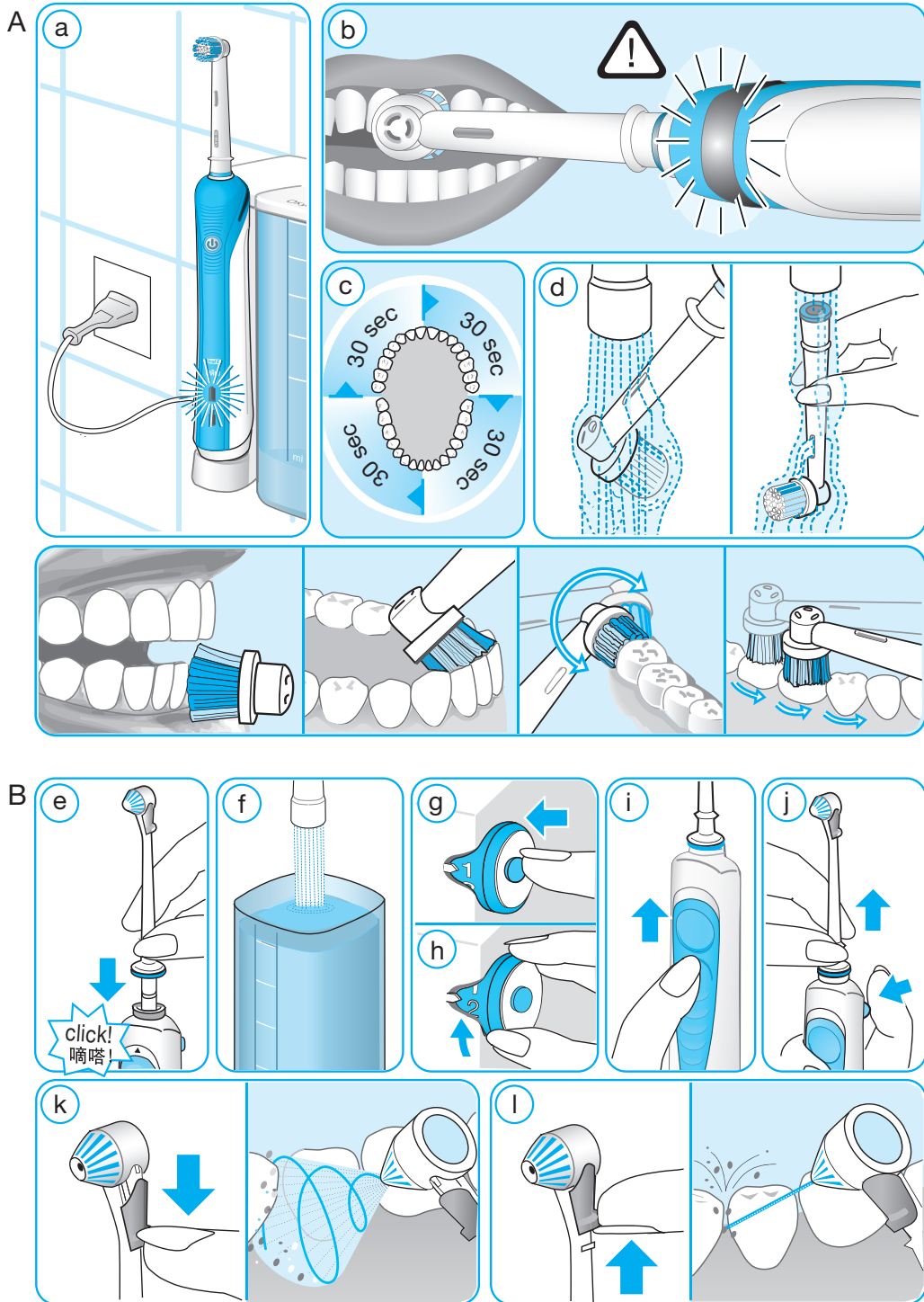
www.braun.com

www.service.braun.com

Braun GmbH
Frankfurter Straße 145
61476 Kronberg/Germany

Type 3724
Handle Type 3756





请在使用产品前仔细阅读本说明书并保留作为以后的参考。

重要注意事项

- 本产品必须放在不会掉入水中或摔落于地上的地方。插头也要放在易取的地方。
- 定期检查电源线有否损坏。已损坏或发生故障的电器不可继续使用。如有损坏，请将其送至博朗服务中心。
- 12岁以下儿童不可以使用本产品。
- 行动不便者和儿童需要在有人监管下安全使用本产品。一般来说，我们建议您将产品摆放在儿童无法接触的地方。
- 儿童需要在有人监管下使用以确保产品不会被用于玩耍。
- 如果产品被摔落，即使没有明显的损坏也请在下次使用前替换刷头。
- 不要将插座摆放或储藏在容易跌落浴缸或洗漱台的地方。
- 不要将插座摆放在在水里或其他液体中。
- 不要接触已经掉入水中的插座。需要立即拔出插头。
- 不要改动和自行修复产品。这些行为可能会导致火灾、触电或其他伤害。请咨询商家或博朗售后服务中心进行维修。除了丢弃电池以外，请不要拆卸产品。
- 取出电池时请注意不要损坏正（+）负（-）极。
- 请不要插入任何物品在打开的产品/插座中。
- 不要用带水的手触碰插头以避免触电。
- 拔出插头时请注意握住插头而不是电源线。
- 请按照产品说明书使用本产品。不要使用其他的配件或电源。不要使用厂商没有推荐的零件或充电器。
- 如果您正在进行口腔治疗。请在使用前咨询您的口腔专家。

产品描述

牙刷

- 1 充电器底座
- 2 低电量指示灯
- 3 充电显示灯
- 4 牙刷手柄（可充电）
- 5 开/关键
- 6 压力显示灯
- 7 刷头（参考“刷头和配件”）
- 8 刷头存储格

口腔冲洗器

- 9 喷嘴存储盒
- 10 喷嘴
- 11 喷嘴调节器
- 12 喷嘴释放按钮
- 13 开/关键
- 14 水压调控钮
- 15 手柄开关（喷水或停水）
- 16 冲洗器手柄
- 17 水杯
- 18 电源线存储格

规格：
电压的规格请参考充电器底部。

A 牙刷的使用

欧乐-B专业口腔护理中心3000系列采用便携挂墙式。存放简单易于使用。（见第4页，图2）

连接电源和充电

本牙刷带有防水手柄，不会导电，可在浴室放心使用

- 将产品与电源插座连接，并将牙刷手柄（4）安放在充电座（1）上。（见第5页，图a）
- 电动牙刷充电时，绿色充电指示灯（3）闪烁。当电量充满时，绿色指示灯会持续闪烁5秒，然后熄灭。一次完整的充电电量可供给大约7天的正常使用（按一天刷牙两次，每次两分钟计算）。

- 当充电显示灯熄灭时，提起牙刷电动牙刷再放回充电插座，用以确认电量状态。当电动牙刷电量充满时充电指示灯闪烁5秒后熄灭。
- 当充电电池电量不足时，红色低电量指示灯（2）会在您关闭牙刷后开始闪烁。
- 日常使用时，牙刷手柄可放置在连接电源的充电插座上以保持充足的电量。不会发生过充现象。然后出于环保的原因，欧乐-B建议您按掉充电器直至产品再次需要充电。请注意当您使用口腔冲洗器时，需要插上电源。
- 为保持充电电池的最大功效，请至少每隔半年定期进行如下操作：不要将牙刷放回充电座，通过正常使用将手柄完全放电，然后重新充电。

请注意：如果充电指示灯没有立即闪烁，请继续充电。指示灯会在10-15分钟内亮起。

刷牙模式

您的牙刷提供不同的刷牙模式，以满足您个性化的口腔需要：

- 标准清洁模式- 有效地口腔清洁
轻柔模式-轻柔地清洁口腔内敏感区域
亮白模式-用于偶尔或每日的抛光亮白
模式切换
- 按下开/关键（5），牙刷自动起始于“标准清洁模式”。
 - 继续按下开/关键，转换刷牙模式至“轻柔模式”和“亮白模式”。
 - 亮白模式后再按一次开/关键，牙刷关闭。
 - 如果您希望在“标准清洁模式”或“轻柔模式”下关闭牙刷，请长按开/关键直至产品停止运转。

刷牙方法

将刷头（7）安装牙刷手柄上。您可以使用任何牙膏。为了避免牙膏飞溅，请将刷头放在牙上后按下启动开关。引导您的牙刷在齿间缓慢移动，每颗牙齿表面都要花几秒钟。就如洗刷您的牙齿一样洗刷您的牙龈，先外再内最后洗刷咀嚼面。不要太过用力的洗刷。

压力感应器

本产品有压力控制系统（见第5页，图b）有益于帮助保护牙齿和牙龈免于过度洗刷。如果压力过大，红色压力显示灯（6）会亮起，提醒您减少压力。除此以外，您也可从声音中听出其中的不同。定期在使用时按压刷头用以检查压力感应系统的运行。

专业定时器

每隔30秒您会听到一个短音提醒您平均洗刷您口腔内所有的4个象限。
长音表示您已经完成了专家推荐的2分钟刷牙时间（见第5页，图c）。

当牙刷暂时停止刷牙的时候，专业定时器会记录您的刷牙时间。当暂停超过30秒，定时器将重置为初始值。

使用本电动牙刷的最初几天，您的牙龈可能会有轻微的出血现象，这种情况一般会在几天后消失。如果这种情况持续两周以上，请与您的牙医联系。如果您的牙齿和牙龈有过敏现象，欧乐-B推荐您使用“敏感模式”。

个性化的刷头和配件（按型号不同配置）

欧乐-B专业口腔护理提供多样化的可替换牙刷头和配件，以满足您不同的口腔需要。可替换刷头和配件可在各大商场欧乐-B柜台销售。



欧乐-B精准清洁型电动牙刷刷头

欧乐-B精准清洁型电动牙刷刷头轻柔有效的清洁帮助保护牙齿与牙龈。刷头的曲线排列包裹每颗牙齿在同一时间清洁齿间深层部位。



欧乐-B专业美白型电动牙刷刷头

欧乐-B专业美白型电动牙刷刷头用于牙齿物理美白。专业牙科抛光杯能帮助清除牙齿表面的咖啡渍，茶渍，烟渍等，有效亮白牙齿。

我们不建议将欧乐-B专业美白型电动牙刷刷头用于牙箍上。12岁以下的儿童也不需要使用博朗欧乐-B ProWhite刷头。

所有刷头都具备蓝色显示型刷毛，帮助你掌控刷头的替换时间。随着一天刷牙两次，每次2分钟的彻底清洁，刷毛会在大约3个月内由蓝色褪为白色，提醒您及时替换牙刷头。



欧乐-B齿间清洁刷头

欧乐-B齿间清洁刷头深层清洁齿间难以触及部位。

清洁建议

使用后，保持开关开启并将刷头和配件置于流水下几秒进行清洁。然后关闭手柄，取下刷头和配件，在流水分别清洗（见第5页，图d），再重新组装牙刷前擦干，将刷柄放回充电底座。

B 口腔冲洗器的使用

在首次使用前，将水杯（17）装满水，握住冲洗器手柄（16）对准脸盆，启动开关，让水完全流出。

- 取一个喷嘴（10）安装在电动牙刷上，直至锁定（见第5页，图e）。温水添加。如果您希望添加漱口水，请先添加温水后再添加漱口水（见第5页，图f）。
- 按下开关（13）打开冲洗器（见第5页，图g）。（此时手柄开关应处于低位即停水位置）
- 用水压调控按钮（14）选择水压（1=温和，5=强劲）（见第5页，图h）我们建议您先从温和水压1开始，如果您的牙龈出血或是儿童使用时更应注意。
- 俯身面对脸盆，将喷嘴朝向牙齿和牙龈。将手柄开关（15）向上推，启动冲洗器（见第5页，图i）。嘴微微张开以便让水流入脸盆。

您可通过向上或向下推动喷嘴调节器（11），选择两种不同的喷水功能。（操作前，请将手柄开关向下推，以关闭水柱）：

旋转水柱：一般清洁和按摩牙龈（喷嘴调节器处于低位）：旋转水柱和细微气泡是为了易于渗入牙龈线下方而设计的。（见第5页，图k）

直射水柱：（喷嘴调节器处于高位）：水柱呈直线喷出，用于清洁特定部位。（第5页，图l）

最长使用时间：15分钟

冷却时间：2小时

喷嘴轴心底部有一滤网，用于确保喷水功能的正常使用。如您注意到水压减小，请检查滤网上是否有沉积物并将其清除，例如：在平坦表面上小心轻敲喷嘴以将沉积物磕出。

使用后

请将水杯清空。如果您的牙医建议您刷牙时使用漱口水，请在使用完后用清水冲洗喷嘴，避免产生物质沉淀。为防止细菌滋生，请持续开启电动牙刷，直至喷嘴停止喷射。

按下开关关闭冲洗器。

按住喷嘴释放按钮，取下喷嘴。（12）（见第2页，图j）。请先将喷嘴及电动牙刷擦干后，再将喷嘴放回喷嘴存储格（9），将电动牙刷放回至底座。

清洁建议

用湿布定期清洁外壳。水杯和喷嘴存储格可拆卸，并可在洗碗机中清洗。

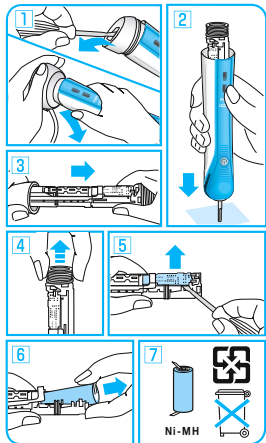
电池的移除

请在产品使用寿命结束时，如下所示打开手柄，移除充电电池并将其送至当地法定规定的回收或处理场所或按照当地的环保规定进行处理。

警告

除了废弃产品以外，不要任意拆卸产品。任意拆卸可能会造成短路，火灾或其他伤害。

您可将产品送至官方服务中心进行维修（如电池更换）。



注意！打开手柄将毁坏产品且不再享有保修。

在移出电池前，请确认电力已完全耗尽。

如有变更，恕不另行通知。

环保提示

产品包含可充电电池。为了保护环境，请不要将本产品在使用寿命结束后和日常家庭垃圾一起丢弃。您可将其送至博朗售后服务中心或当地法定规定的回收或处理场所或按照当地的环保规定进行处理。

保修

我们为产品提供2年的有限保修，保修期从购买日开始计算。在保修期内对于材料或生产过程引起的各种瑕疵，我们会视情况更换零件或整个产品。本保修适用于全球范围内所有博朗公司及其指定供应商出售的博朗产品。

上述保修不包含以下内容：由于使用不当造成的产品损坏；正常使用引起的产品老化、磨损、（如刷头等）；以及对产品的价值或使用功能影响不大的一些瑕疵。如果产品经过未经授权的人员修理，或产品使用了非本公司（博朗公司）的零件，保修期立即终止。

若在保修期内需要维修，请在保修期内将本产品和销售收据一起交给授权的欧乐-B博朗售后服务中心。

欧乐-B口腔护理组合

充电式电动牙刷+冲牙器

型号：3724

广州宝洁有限公司

地址：广州市经济技术开发区滨河路一号

关于更换可替换刷头的保修说明

由于使用非欧乐-B品牌可替换刷头而引起的充电刷柄的损坏将不适用于欧乐-B保修服务条例。

欧乐-B不推荐使用非欧乐-B品牌可替换刷头。

- 欧乐-B不能控制非欧乐-B品牌可替换刷头的质量。因此，在使用非欧乐-B品牌可替换刷头的情况下，我们不能保证口腔清洁的效果跟使用原装置配置的刷头一样。
- 欧乐-B不能保证非欧乐-B品牌可替换刷头能够很好地兼容电动刷柄。
- 欧乐-B无法预测长期使用非欧乐-B品牌可替换刷头对刷柄的影响。

所有的欧乐-B品牌可替换刷头都持有欧乐-B品牌商标，且符合欧乐-B的高质量标准。欧乐-B不出售标注在其他品牌下的任何可替换刷头或刷柄。

售后服务中心列表：

邮编	城市	公司名称	地址	联系电话	传真
中区					
200085	上海	安帮北路天路家用电器维修服务社	上海市永兴路540号(靠近西藏北路)	021-63566755/56329466	021-56329466
200235	上海	乐帮新亭办公设备维修服务社	上海市漕溪路190号(靠近田林东路)	021-64688241	021-64384218
201100	上海	上海市闵行区博杰家电维修部	上海市闵行区莘建东路210号(莘庄地铁站-北广场)	021-64122533	021-64122533
310016	杭州	杭州中侨家电维修服务有限公司	杭州市采荷路10号	0571-86047438	0571-86047438
215004	苏州	苏州家用电器维修服务中心有限公司	苏州市干将西路1168号	0512-68662852	0512-68264031
266071	青岛	青岛市市南区东成数码产品维修服务部	青岛市市南区银川西路3号致泰商务楼202室	0532-85977910	0532-88087569
361003	厦门	厦门市思明区新鹭声电子技术服务部	厦门后埭溪路248号之6、7、8号	0592-5170118	0592-5855881
210003	南京	南京博伊华电子电器经营部	南京市中山北路223号建达大厦	025-83420092	025-83420092
214031	无锡	无锡新闻通信设备服务有限公司	无锡市五爱北路27号	0510-82729805	0510-82798229
213001	常州	常州市金博家电经营部	常州市天宁区迎宾路江南佳园4-S-10	0519-88836628	0519-86683117
226001	南通	南通市崇川雷声电器服务中心	南通市虹桥路怡安花苑11幢04店面	0513-96889688/85102088	0513-85109088
315040	宁波	宁波市江东明楼甬城家电维修部	宁波市江东南路506号	0574-87771344	0574-87774444
315000	宁波	宁波海曙创佳数码家电维修部	宁波市苗圃路39弄50号(海关对面)	0574-87134422	0574-56682009
250013	济南	历下区南航家电维修服务部	济南市历下区历山路57号历山商务中心407室	0531-86950100	0531-86950100
230022	合肥	合肥国升数码技术服务部	合肥市金寨路93号鸿基国际广场329室	0551-2655887/2654456	0551-2655227
450000	郑州	郑州百川电器技术有限公司	郑州市北下街79号	0371-66964036	0371-66218778
北区					
100078	北京	北京盛侨家电维修维修服务中心	北京市丰台区方庄芳群园2区6号楼金芳公寓408室	010-67698025/67630617	010-67698025
100035	北京	北京盛侨家电维修维修服务中心	北京市西城区德胜门内大街54号	010-66561976	010-66561976
050021	石家庄	河北省家用电器维修中心	石家庄市槐北路70号	0311-86011793	0311-86118176
300022	天津	天津市大东电器维修有限公司	天津市和平区滨江道109号	022-27120167	022-27127267
300100	天津	天津市大东电器维修有限公司	天津市南开区三马路126号	022-27120168/27120170	022-27120649
110011	沈阳	沈阳市今东家电技术服务有限公司	沈阳市沈河区承德路36-1	024-24870309/24855340	024-24869029
150010	哈尔滨	哈尔滨市道里区信普进口家电维修部	哈尔滨市道里区地段街190号	0451-84644674	0451-84618946
150020	哈尔滨	哈尔滨市道外区尼康映像数码维修站	哈尔滨市道外区南勋街18号	0451-88940125	0451-88940183
116021	大连	大连中服电子技术服务中心	大连市沙河口区西南路791号-7-3	0411-86841988	0411-86847688
130021	长春	吉林省嘉泰电子产品经销有限公司	长春市富锦路21号(桂林路富锦路交汇)	0431-85676646	0431-85399850
710014	西安	陕西百利商贸有限公司	西安市丰禾路6丰禾小区2号楼2楼	029-86220211	029-86262730
南区					
510600	广州	广州市博健电器有限公司	广州市五羊新城明月二路春风路E-12栋首层	020-87386165(6)	020-87384760
518028	深圳	深圳市顺电连锁股份有限公司	深圳市华强北路上步工业区202栋2楼东	0755-83286255	0755-83286491
400020	重庆	重庆市渝中区中侨家电维修部	重庆市江北区建新南路18号城市领地A栋附2楼7号门市	023-63527117	023-63527117
530001	南宁	南宁市南方家电维修中心	广西南宁市唐山路29号首层	0771-3118895/3907787	0771-3105114
650051	昆明	昆明松和电器有限公司	昆明市环城北路280号	0871-3645557	0871-3645586
430015	武汉	武汉市江岸区兆利达家电维修中心	汉口解放大道1439号4栋3单元101室	027-85790611	027-85796037
410007	长沙	长沙市俊铭电器有限公司	长沙市人民东路216号	0731-84148005/84148009	0731-84132188
610017	成都	成都市武侯区金维电子经营部	成都市大安东路57号3-6号	028-66656887	028-66932628
528200	佛山	佛山市禅城区得盛家电维修部	佛山市禅城西门商业街10号	0757-83213535	0757-83204817
350001	福州	福州福泰电器维修服务有限公司	福州市塔头路328号顺意园一楼店面(福州锅炉厂对面)	0591-87582122	0591-87575432
325000	温州	温州市声像技术服务公司	温州市锦绣路利府花苑5幢一层南1-05号	0577-88850706/10187	0577-88812594

English

Please read the usage instructions carefully before first use and save it for future reference.

Important

- The appliance must be mounted in a way that it cannot fall into water or drop to the floor. The plug should always be accessible.
- Periodically check the cord for damage. A damaged or non-functioning unit must no longer be used. If the cord is damaged, take the charging unit to an Oral-B Braun Service Centre.
- This product is not intended for use by children under age 12.
- This appliance is not intended for use by children or persons with reduced physical, sensory or mental capabilities, unless they are supervised by a person responsible for their safety. In general, we recommend that you keep the appliance out of reach of children.
- Children should be supervised to ensure that they do not play with the appliance.
- If the toothbrush handle is dropped, the brush head should be replaced before the next use even if no damage is visible.
- Do not place or store the appliance where it can fall or be pulled into a tub or sink.
- Do not place the appliance in water or other liquid.
- Do not reach for an appliance that has fallen into water. Unplug immediately.
- Do not modify or repair the product. This may cause fire, electric shock or injury. Consult your dealer for repairs or contact an Oral-B Braun Service Centre. Do not disassemble the product except when disposing of the battery.
- When taking out the battery from the toothbrush handle for disposal, use caution not to short the positive (+) and negative (–) terminals.
- Do not insert any object into any opening of the appliance.
- Do not touch the power plug with wet hands. This can cause an electric shock.
- When unplugging, always hold the power plug instead of the cord.
- Use this product only for its intended use as described in this manual. Do not use attachments or chargers not recommended by the manufacturer.
- If you are undergoing treatment for any oral care condition, consult your dental professional prior to use.

- 5 On/off button
- 6 Pressure sensor light
- 7 Brush head
(see «Brush heads and accessories»)
- 8 Brush head compartment

Irrigator

- 9 Jet compartment
- 10 Irrigator jet
- 11 Jet switch
- 12 Jet release button
- 13 On/off switch
- 14 Water pressure control dial
- 15 Handle switch (water stop and go)
- 16 Irrigator handle
- 17 Water container (600 ml)
- 18 Cord storage

Specifications:

For voltage specifications please refer to the bottom of the charging unit.

A Using your toothbrush

Your Oral-B Professional Care OxyJet +3000 comes with a convenient wall holder. It can be mounted easily using the attached items (see picture 2, page 4).

Connecting and charging

Your toothbrush has a waterproof handle, is electrically safe and designed for use in the bathroom.

- Plug the appliance into an electrical outlet and place the toothbrush handle (4) on the charger base (1), (see picture a, page 5).
- The green charge indicator light (3) flashes, while the handle is being charged. Once it is fully charged, the green charge indicator light shines continuously for 5 seconds; then it turns off. A full charge enables up to seven days of regular brushing (twice a day, 2 minutes). To check the charging status when the charging light is off, shortly lift up and return your handle on the charging unit. The charge indicator light will shine permanently for 5 seconds and turns off when your handle is fully charged.
- When the rechargeable battery is low, the red low charge indicator light (2) starts blinking after turning off your toothbrush.
- For everyday use, the toothbrush handle can be stored on the charging unit to maintain it at full power. Overcharging is impossible. However for environmental reasons, Oral-B recommends to unplug the charging unit until the next recharge is required. Please note that you need to plug in the appliance when using the irrigator.

Description

Toothbrush

- 1 Charger base
- 2 Low Charge Indicator light
- 3 Charge Indicator light
- 4 Toothbrush handle (rechargeable)

- To maintain the maximum capacity of the rechargeable battery, unplug the charging unit and fully discharge the handle with regular use at least every 6 months.

Please note: If the charge indicator light is not flashing immediately, continue charging. It will appear in 10–15 minutes.

Brushing modes

Your toothbrush offers different brushing modes to best meet your individual oral care needs.

«Daily Clean»	Exceptional mouth cleaning
«Sensitive»	Gentle, yet thorough cleaning for sensitive areas
«Whitening»	Exceptional polishing for occasional or everyday use

How to switch between brushing modes:

- When pressing the on/off button (5) your toothbrush automatically starts in the «Daily Clean» mode.
- To switch to the «Sensitive» and «Whitening» mode, successively press the on/off button.
- To turn off your toothbrush from the «Whitening» mode, push the on/off button once more.
- If you wish to turn off your toothbrush from either the «Daily Clean» or «Sensitive» mode, push and hold down the on/off button until the motor stops.

Brushing technique

Attach the brush head (7) to the toothbrush handle. You can use any kind of toothpaste. To avoid splashing, first guide the brush head to your teeth before switching on the appliance. Guide the brush head slowly from tooth to tooth, spending a few seconds each tooth surface. Brush both the gums and the teeth; first the outsides, then the insides and finally the chewing surfaces. Do not press too hard or scrub.

Pressure Sensor

Helping protect your teeth and gums from hard brushing, your toothbrush has a pressure control feature installed (see picture b, page 5). If too much pressure is applied, the red pressure sensor light (6) will light up reminding you to reduce pressure. In addition you will also hear a different sound while brushing. Periodically check the operation of the pressure sensor by pressing lightly on the brush head during use.

Professional Timer

A short stuttering sound at 30-second intervals reminds you to brush equally all four quadrants of your mouth.

A long stuttering sound indicates the end of the professionally recommended 2-minute brushing time (see picture c, page 5).

The elapsed brushing time is memorised, even when the handle is briefly switched off during brushing. When pausing longer than 30 seconds the timer resets to the initial starting point.

In the first days of using the toothbrush, your gums may bleed slightly. In general, bleeding should stop after a few days. Should it persist after 2 weeks, please consult your dentist or dental hygienist. If you have sensitive teeth and gums, Oral-B recommends using the «Sensitive» mode.

Brush heads and accessories (depending on model)

The Oral-B Professional Care offers you a variety of brush heads and accessories, allowing you to select those which best meet your oral care needs. Replacement brush heads and accessories are available in stores that sell Oral-B products.

Oral-B Precision Clean brush head



The Oral-B Precision Clean brush head cups each tooth with a curved bristle trim and reaches deep between teeth at the same time.

Oral-B ProWhite brush head



The Oral-B ProWhite brush head features a dentist-inspired polishing cup to remove surface stains from coffee, tea and tobacco for effective brightening.

We do not recommend using the Oral-B ProWhite brush head with braces. Children under 12 years old should not use the Braun Oral-B ProWhite brush head.

Oral-B brush heads feature blue INDICATOR® bristles to help you monitor brush head replacement need. With thorough brushing, twice a day for two minutes, the light blue color will fade halfway approximately within 3 months, signaling it is time to change the brush head.

Oral-B Power Tip



Cleans deep between teeth as well as around orthodontic appliances.

Cleaning recommendations

After brushing rinse your brush head or accessory carefully under running water for some seconds with the handle switched on. Switch off the handle and remove the brush head or accessory. Clean both

parts separately under running water (see picture d, page 5); then wipe them dry before reassembling the toothbrush. Put the toothbrush handle back on the charger base.

B Using your irrigator

Before using the irrigator first time, fill the water container (17) and allow the water to run through completely by holding the irrigator handle (16) over a washbasin.

- Attach one of the irrigator jets (10) to the handle until it locks into place (see picture e, page 5). Fill the water container with lukewarm water. If you want to add mouthwash into the water, please make sure you fill the water container with lukewarm water first, then add the mouthwash (see picture f, page 5).
- Turn on the irrigator by pressing the on/off switch (13) (see picture g, page 5). When doing so, the handle switch should be in the lower position = water stop.
- Select the water pressure with the pressure control dial (14) (1 = gentle, 5 = strong) (see picture h, page 5). We recommend that you start with setting 1, especially if your gums tend to bleed or if children are using the irrigator.
- Bend over a washbasin and guide the jet to your teeth and gums. Slide the handle switch (15) up to start the water stream (see picture i, page 5). Keep your mouth slightly open to allow the water to run into the washbasin.

You can choose between two different jet functions by sliding the jet switch (11) down or up (before doing so, turn off the water stream by sliding the handle switch down):

Rotating stream for general cleaning and gum massage (jet switch in lower position): The rotation of the water stream and its micro-bubbles is designed for easy penetration and gentle gum massage (see picture k, page 5).

Mono stream (jet switch in upper position): The straight water stream is designed for targeted cleaning (see picture l, page 5).

Maximal operation time: 15 minutes
Cooling off time: 2 hours

In general we recommend to replace the irrigator jet every 3 months.

After use

Always empty the water container entirely. If your dentist has recommended the use of mouthwash with your irrigator, allow some clean water to run

through the irrigator before you empty the container entirely to prevent any deposit build-up. Make sure you keep the irrigator switched on until the water stops running through the irrigator jet, to prevent bacteria from collecting in the standing water.

Press the on/off switch to turn off the irrigator.

To take off the irrigator jet, press the jet release button (12), (see picture j, page 5). Always wipe the handle and the irrigator jet dry; place the handle back onto its base and store the irrigator jet in the jet compartment (9). Always wipe the handle and the irrigator jet dry; place the handle back onto its base and store the irrigator jet in the jet compartment (9).

Cleaning recommendations

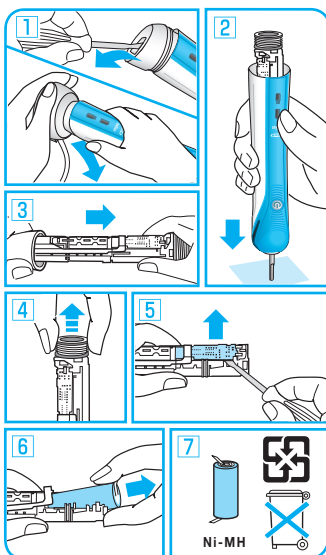
Regularly clean the housing with a damp cloth. The water container and the jet compartment are removable and dishwasher-safe.

Removing Batteries

At the end of the product's useful life, open the handle as shown, remove the rechargeable battery and dispose of it according to local environmental regulations.

Warning:

Do not disassemble the product at any time other than when disposing of it. Failure to observe this point may result in short circuit, fire or injury. For repair or maintenance (such as battery replacement), take the product to an authorized service centre.



Caution!

Opening the handle will destroy the appliance and invalidate the warranty.

Please make sure the rechargeable battery is completely discharged before disassembling the appliance for product disposal.

Subject to change without notice.

Environmental notice

This product contains rechargeable batteries. In the interest of protecting the environment, please do not dispose of the product in the household waste at the end of its useful life.

Disposal can take place at an Oral-B Braun Service Centre or at appropriate collection points provided in your country.



Guarantee

We grant 2 years limited guarantee on the product commencing on the date of purchase. Within the guarantee period we will eliminate, free of charge, any defects in the appliance resulting from faults in materials or workmanship, either by repairing or replacing the complete appliance as we may choose. This guarantee extends to every country where this appliance is supplied by Braun or its appointed distributor.

This guarantee does not cover: damage due to improper use, normal wear or use, especially regarding the brush heads, as well as defects that have a negligible effect on the value or operation of the appliance. The guarantee becomes void if repairs are undertaken by unauthorised persons and if original Braun parts are not used.

To obtain service within the guarantee period, hand in or send the complete appliance with your sales receipt to an authorised Oral-B Braun Service Centre.

For UK only:

This guarantee in no way affects your statutory rights.

Warranty replacement brush heads

Oral-B warranty will be voided if electric rechargeable handle damage is found to be attributed to the use of non-Oral-B replacement brush heads.

Oral-B does not recommend the use of non Oral-B replacement brush heads.

- Oral-B has no control over the quality of non-Oral-B replacement brush heads. Therefore, we

cannot ensure the cleaning performance of non-Oral-B replacement brush heads, as communicated with the electric rechargeable handle at time of initial purchase.

- Oral-B cannot ensure a good fit of non-Oral-B replacement brush heads.
- Oral-B cannot predict the long-term effect of non-Oral-B replacement brush heads on handle wear.

All Oral-B replacement brush heads carry the Oral-B logo and meet Oral-B's high quality standards. Oral-B does not sell replacement brush heads or handle parts under any other brand name.