

Intel® Data Migration Software

User Guide

April 2016

Software Version 3.0



Intel may make changes to specifications and product descriptions at any time, without notice. Designers must not rely on the absence or characteristics of any features or instructions marked "reserved" or "undefined." Intel reserves these for future definition and shall have no responsibility whatsoever for conflicts or incompatibilities arising from future changes to them. The information here is subject to change without notice. Do not finalize a design with this information.

The products described in this document may contain design defects or errors known as errata which may cause the product to deviate from published specifications. Current characterized errata are available on request.

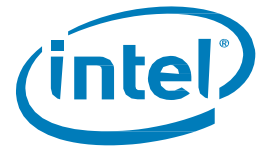
Contact your local Intel sales office or your distributor to obtain the latest specifications and before placing your product order.

Copies of documents which have an order number and are referenced in this document, or other Intel literature, may be obtained by calling 1-800-548-4725, or go to: <http://www.intel.com/design/literature.htm>.

Intel and the Intel logo are trademarks of Intel Corporation in the U.S. and other countries.

*Other names and brands may be claimed as the property of others.

Copyright © 2016 Intel Corporation. All rights reserved.



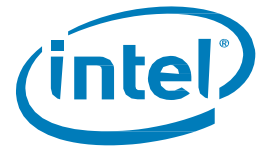
Contents

1	Introduction.....	5
1.1	Overview.....	5
1.2	Before you Begin	5
1.3	Minimum System Requirements.....	6
1.4	Windows* 8 and 10 Support.....	6
2	Downloading and Installing the Intel Data Migration Software.....	7
3	Starting the Software and Migrating Your Data.....	8
4	Switching Drives	10
5	Additional Support.....	10
Appendix A	Creating Bootable Media	11
Appendix B	Generating System Reports	12



Revision History

Revision Number	Description	Revision Date
003	Updated for software version 3.0; added support for Windows 10.	April 2016
002	Updated for software version 2.0; added instructions for Windows 8	April 2013
001	Initial Release	June 2010



1 Introduction

This guide describes how to transfer your data from a storage device (such as a hard disk drive) to an Intel® Solid State Drive (Intel® SSD) using the Intel® Data Migration Software.

1.1 Overview

Transferring your data using Intel Data Migration Software consists of three main steps:

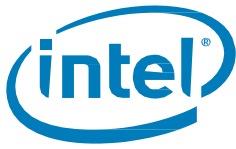
1. Downloading and installing the Intel Data Migration Software
2. Starting the software and migrating your data
3. Switching the placement of your old hard disk drive with your new Intel SSD

1.2 Before you Begin

Before you install the software:

- Make sure your new Intel SSD and your old storage device are connected to your computer according to the installation instructions that come with the Intel SSD.
- Verify that the amount of data on your old storage device does not exceed the size of your new SSD. If the amount of data on your old storage device is greater than the capacity of your Intel SSD, the data migration will not complete.
- Back up your data! Always create a backup of your important data before moving it.

The Primary cloning method is using the Intel Data Migration software from the host Operating System. There is an alternate method of cloning by creating a bootable CD/USB drive using the "Rescue Media Builder" icon on the main program window after installing. This will make a bootable drive which can be used to run the software.



1.3 Minimum System Requirements

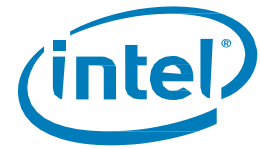
The Intel Data Migration Software requires the following hardware:

- Intel SSD
- Processor Pentium 1 GHz
- 1GB RAM
- 1.5GB of free space on storage media
- Screen resolution of 1152x720
- (Recommended) Mouse or other pointing input device
- (For bootable media creation) CD-RW/DVD-RW drive or USB flash drive

1.4 Windows* 8 and 10 Support

The Intel Data Migration Software supports Windows* 8 and 10 systems with GUID Partition Table (GPT), Secure boot and uEFI BIOS.

Note on UEFI Support: For the data migration to complete, it will reboot the system to run an Acronis* loader. Some EFI BIOS will not automatically boot to this loader. It may be necessary to interrupt the reboot process. If this is the case, enter into the BIOS Boot Manager to instruct the computer to run the Acronis* loader. Please refer to your computer's documentation on how to enter the BIOS or boot loader.



2 Downloading and Installing the Intel Data Migration Software

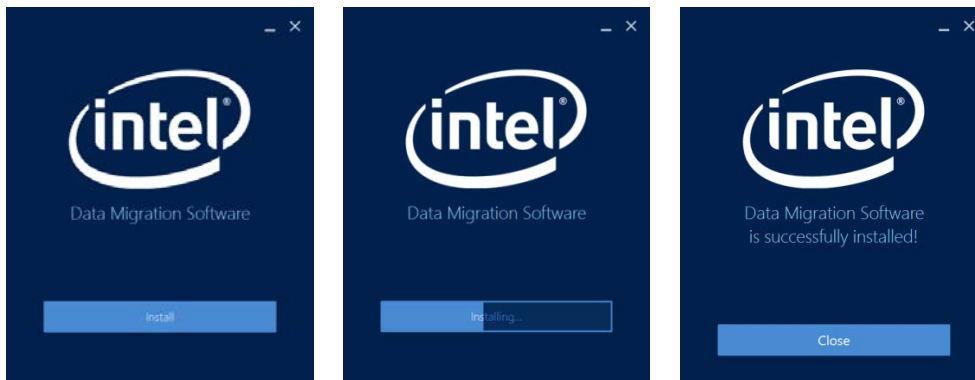
1. Download the Intel Data Migration Software from the following location:

<http://www.intel.com/go/ssdinstallation>

2. When the software download has finished, launch the file and, if necessary, give your operating system permission for the program to make changes to your computer

NOTE: The software works with Intel SSDs only. If you receive an error message, make sure that you have an Intel SSD connected to your system. If you have an Intel SSD connected to your system and still receive an error message, run the idms_1041_workaround.exe (located in the downloaded .zip folder) and then attempt to install the software again. If you continue to receive an error message, contact Intel support at <http://www.intel.com/support>.

3. When the Intel Data Migration Software screen appears, click **Install**.



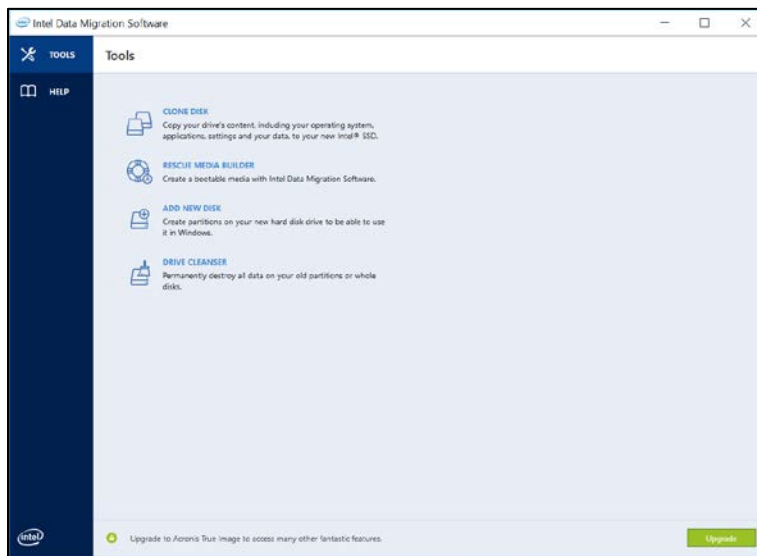
The Intel Data Migration Software wizard will take a moment to complete the install.

4. When the installation completes, close the installation window and then start the software.

3 Starting the Software and Migrating Your Data

1. Double-click the Intel Data Migration Software icon on your desktop

The Intel Data Migration Software screen will appear.



2. Click **Clone Disk**.

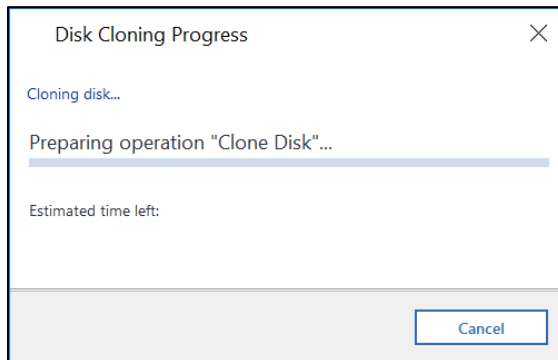
The Intel Data Migration Software automatically detects your drives and gives you the option to copy all of your data to your Intel SSD.



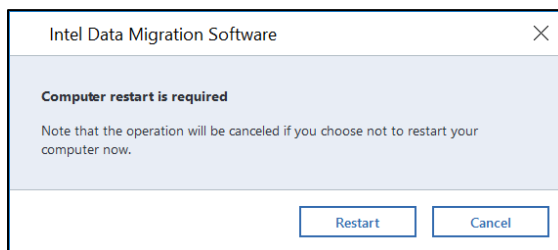
The software identifies your SSD and verifies that the used space on your old storage device is the same or smaller than the available space on your SSD.

3. Click **Clone Now**.

This starts the data migration process.



During this process, you will be prompted to restart your computer.



4. Click **Restart**.

This reboots your computer and the software loads a pre-operating system where the migration process continues.

Note: On computers with an EFI BIOS, you may have to interrupt the reboot and direct the system to boot to “Acronis loader” See [Windows* 8 and 10 Support](#) on page 6.

Check the progress bar to see the status of the data migration. The length of the procedure corresponds to the amount of data on the drive being transferred.

Once the operation completes, the computer will shut down.

5. After your computer shuts down, switch the placement of your drives (see [Chapter 4](#)).

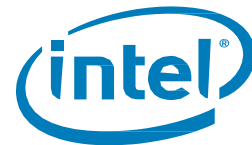


4 Switching Drives

1. After the data migration to your new Intel SSD is complete, switch the placement of your old hard disk drive with your new Intel SSD.
 - For desktop computers, you can either physically remove the old hard disk drive and replace it with your new Intel SSD or keep the hard disk drive in your computer and change the boot order of the drives in the system BIOS . Refer to your computer's original instructions to determine how to safely switch the SATA positions of your original hard disk drive and new Intel SSD.
 - For laptop computers, remove the old hard disk drive and replace it with your new Intel SSD. Follow the instructions included with the Intel SSD.
2. After switching your drives, start your computer.

5 Additional Support

For more help with Intel SSDs, go to <http://www.intel.com/support>.



Appendix A Creating Bootable Media

You can run Intel Data Migration Software from an emergency boot disk on a new system or a crashed computer that cannot boot.

The Rescue Media Builder will allow you to make a USB flash drive or blank CD/DVD bootable.

NOTE: If you use non-optical media, the media must have FAT16 or FAT32 file system.

1. Plug in a USB flash drive, or insert a blank CD or DVD.
2. Start the Data Migration Software.
3. In the Tools menu, choose *Rescue Media Builder*.
4. Choose bootable media type *Intel Bootable Rescue Media*.
5. Choose media destination.

If you have inserted a CD/DVD or USB, available options will appear in the list along with the option to create an ISO image.

NOTES:

- For USB flash drives, if your drive has an unsupported file system, the software will suggest formatting it to FAT file system.

Warning! Formatting will permanently erase all data on the device.

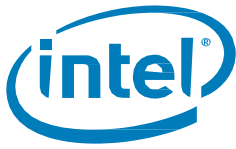
- If an .iso file is created, you can burn it onto a CD or DVD.

You will see a summary.

6. Click **Proceed**.
7. It will take a moment to build.

Upon completion, you will see a *Bootable media has been created successfully* message.

8. Close the window.



Appendix B Generating System Reports

If you should need help from the Intel support team, detailed information about your system can help to expedite the support process. The Intel Data Migration Software simplifies the procedure by allowing you to generate a system report containing all necessary technical information which you can save to a file. When necessary, you can attach this System Report file to your problem description and send it to the Intel support team to simplify and speed up the search for a solution.

To generate a system report, perform one of the following:

- On the main program window, click the question mark symbol and select *Generate System Report*.
- Press **CTRL+F7**.

NOTE: You can use the key combination even when Intel Data Migration Software is performing any other operation.

After the report is generated:

- To save the generated system report to file, click **Save** and in the opened window specify a location for the created file.
- To exit to the main program window without saving the report, click **Cancel**.