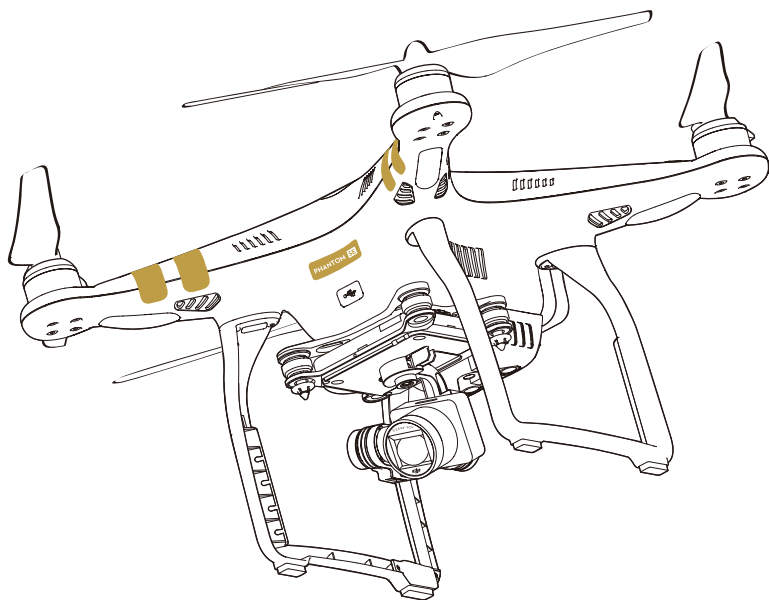


PHANTOM 3 SE

Quick Start Guide

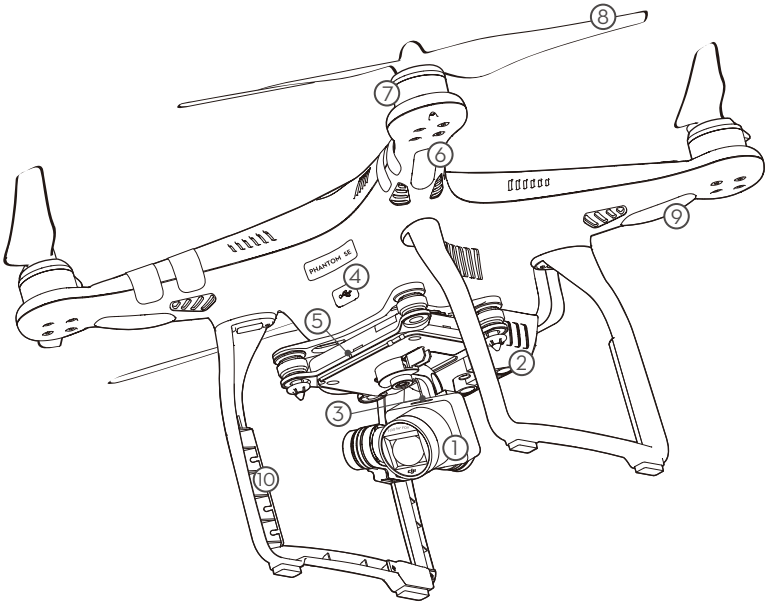
V1.0



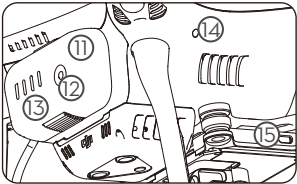
Phantom 3 SE

The PHANTOM™ 3 SE's camera records video at up to 4K and captures 12 megapixel photos.

Review the diagram to learn the names and locations of various Phantom 3 SE components:



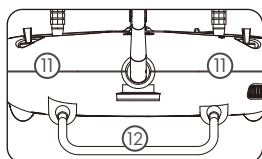
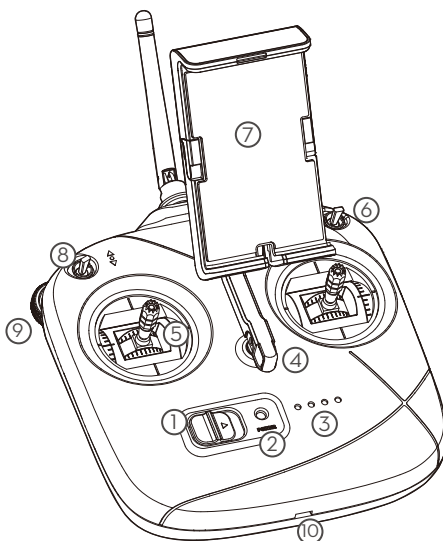
- | | |
|------------------------------|--------------------------------|
| 1. Gimbal and Camera | 9. Aircraft Status Indicators |
| 2. Vision Positioning System | 10. Antennas |
| 3. Camera Micro SD Card Slot | 11. Intelligent Flight Battery |
| 4. Aircraft Micro USB Port | 12. Power Button |
| 5. Camera Status Indicator | 13. Battery Level Indicators |
| 6. Front LEDs | 14. Link Button |
| 7. Motors | 15. Camera Micro USB Port |
| 8. Propellers | |



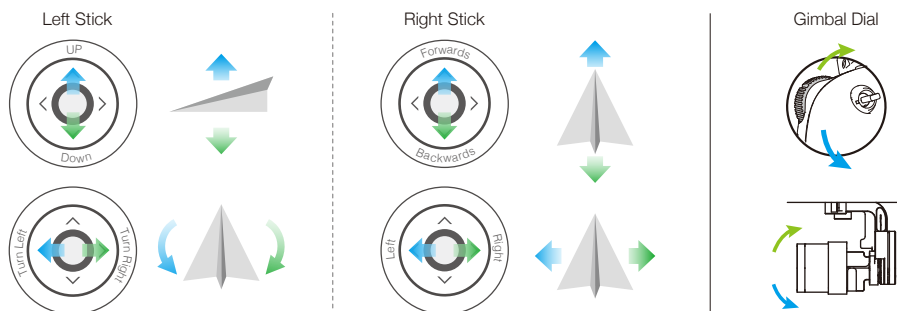
Remote Controller

The remote controller allows you to control your Phantom 3 SE at distances up to 2.5 mi (4 km)*. Built into the remote controller is a rechargeable LiPo battery and Wi-Fi video downlink, which when paired with a compatible mobile device gives you a live HD view from the Phantom's camera.

1. Power Switch
2. Status LED
3. Battery Level LEDs
4. Lanyard Loop
5. Control Sticks
6. Switch S1
7. Mobile Device Holder
8. Switch S2
9. Gimbal Dial
10. Micro USB Port
11. Built-in Antennas
12. Handle Bar



Here are the default flight controls (Mode 2). The left stick controls the aircraft's altitude and heading, while the right stick controls its forward, backward, left and right movements. The gimbal dial controls the camera's tilt.



* The remote controller can reach its maximum transmission distance of 2.5 mi (4 km) in wide open areas with minimal magnetic interference and at an altitude of about 400 feet (120 meters) while FCC compliant.

Using Phantom 3 SE

1. Download the DJI GO App

Search 'DJI GO' on the App Store or Google Play and download the app to your mobile device.

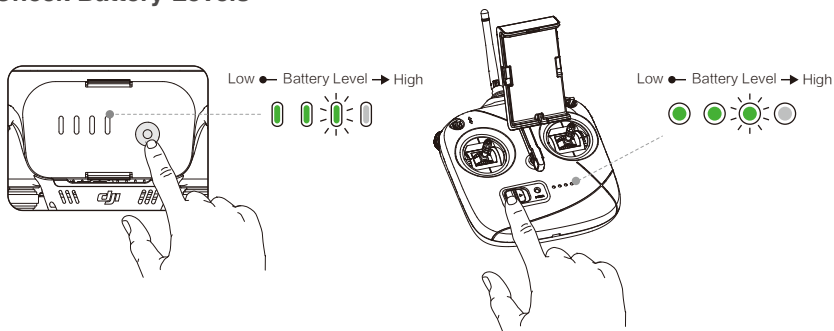


DJI GO App



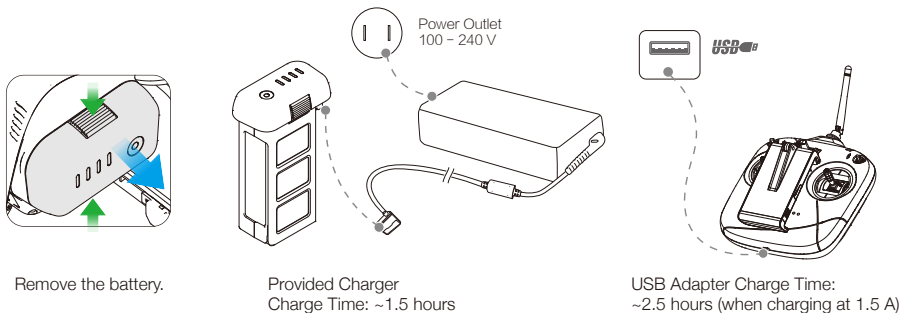
- The DJI GO™ app supports iOS 8.0 and Android 4.1.2, or later versions.

2. Check Battery Levels



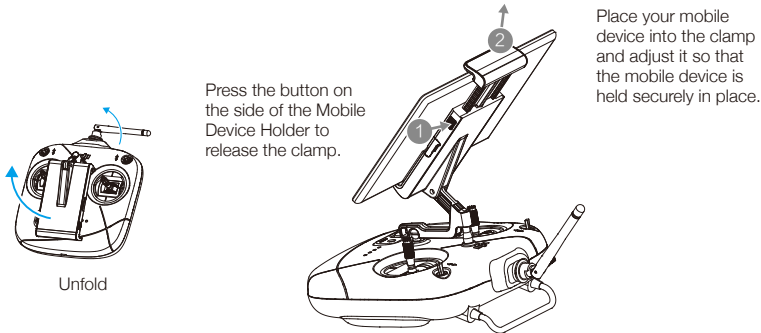
Press once to check the battery level.
Press once, then again and hold to turn on/off.

3. Charging the Batteries

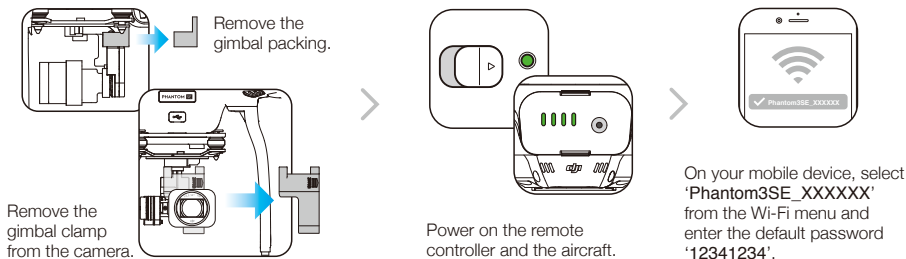


- When charging is complete, the battery will automatically power off and the Status LED will change from red to green.

4. Preparing the Remote Controller



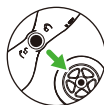
5. Prepare for Takeoff



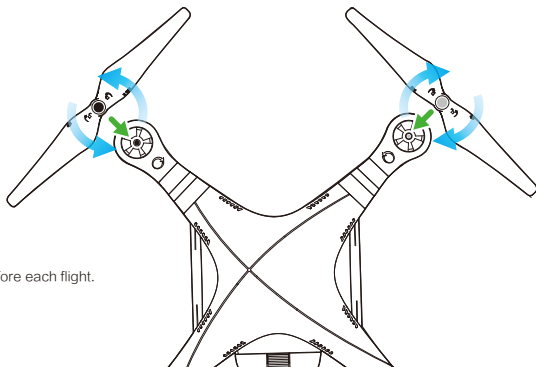
Activate your Phantom if you are using it for the first time. This requires an internet connection.



Launch the app.



Black propeller nuts go on motors with black dots.
Silver propeller nuts go on motors without black dots.



• Tighten the propellers with both hands before each flight.

6. Flight

Ready to Go (GPS)

Before taking off, ensure the Aircraft Status Bar in the DJI GO app indicates 'Ready to Go (GPS)'.

In the DJI GO App:



Auto Takeoff

The aircraft will take off and hover at an altitude of 4 feet (1.2 meters).



Auto Landing

The aircraft will land vertically and stop its motors.



Return-To-Home

Brings the aircraft back to the Home Point. Tap again to stop the procedure.



- The aircraft will not avoid obstacles while it is returning to the Home Point, and an appropriate RTH altitude **MUST** be set before flight. You should also use the control sticks to guide the aircraft. Refer to the Safety Guidelines and Disclaimer for more details.

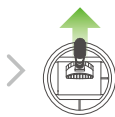
Manual Takeoff



OR



Combination Stick Command to start/stop the motors



Left stick up (slowly) to take off

Manual Landing



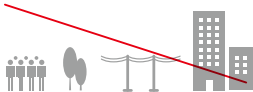
Left stick down (slowly) until you touch the ground
Hold a few seconds to stop the motors



- Never stop the motors mid-flight, otherwise the aircraft will crash. Only stop the motors when the aircraft is on the ground or in emergencies to reduce the risk of damage or injury.

7. Fly Safe

DJI encourages you to enjoy flying in a safe, responsible and smart way.



DO NOT FLY near or above people, near trees, power lines or buildings.



DO MONITOR YOUR ALTITUDE

and fly under 400 feet (120 meters).

It is important to understand basic flight guidelines, for the safety of both you and those around you. Refer to the Safety Guidelines and Disclaimer for more information.



DO NOT FLY in rain, snow, fog, and wind speeds exceeding 22 mph or 10 m/s.



DO MAINTAIN LINE OF SIGHT

and avoid flying behind buildings or obstacles that block your view.



No Fly Zones

More information at:
<http://www.dji.com/flysafe/no-fly>

Specifications

• Aircraft

Weight (Including Battery)	1236 g
Max Ascent Speed	5 m/s
Max Descent Speed	3 m/s
Max Speed	16 m/s (Atti mode, no wind)
Max Service Ceiling Above Sea Level	19685 feet (6000 m) (Software altitude limit: 400 feet above takeoff point)
Max Flight Time	Approximately 25 minutes
Operating Temperature Range	32° to 104° F (0° to 40° C)
GNSS	GPS+GLONASS
Operating Frequency	2.400-2.4835 GHz; 5.725-5.850 GHz
Transmitter Power (EIRP)	2.4 GHz: ≤27 dBm (FCC); ≤20 dBm (SRRC); ≤20 dBm (CE) 5.8 GHz: ≤30 dBm (FCC); ≤26 dBm (SRRC); ≤14 dBm (CE)

• Gimbal

Controllable Range	Pitch: -90° to +30°
--------------------	---------------------

• Vision Positioning

Velocity Range	<8 m/s (Altitude 2 m)
Altitude Range	30 cm to 300 cm
Operating Range	50 cm to 300 cm
Operating Environment	Surface with clear pattern and adequate lighting (Lux > 15)

• Camera

Sensor	1/2.3" CMOS Effective pixels:12 M
Lens	FOV (Field Of View) 94° 20 mm (35 mm format equivalent) f/2.8 Focus at - ∞
ISO Range	100-3200 (video) 100-1600 (photo)
Electronic Shutter Speed	8 to 1/8000 s
Image Max Size	4000×3000
Still Photography Modes	Single shot Burst shooting: 3/5/7 frames Auto Exposure Bracketing (AEB): 3/5 bracketed frames at 0.7EV Bias Interval shot

Video Recording Modes	C4K: 4096×2160 24/25p 4K: 3840×2160 24/25/30p 2.7K: 2704×1520 24/25/30p FHD: 1920×1080 24/25/30/48/50/60p HD: 1280×720 24/25/30/48/50/60p 60 Mbps
Max Bitrate of Video Storage	FAT32 (≤ 32 GB); exFAT (> 32 GB)
Supported File Systems	JPEG, DNG
Photo Formats	MP4/MOV (MPEG-4 AVC/H.264)
Video Formats	Micro SD, Max capacity: 64GB. Class 10 or UHS-1 rating required
Supported SD Card Types	32° to 104° F (0° to 40° C)
Operating Temperature Range	

• Remote Controller

Operating Frequency	2.400 GHz – 2.4835 GHz, 5.725 GHz - 5.850 GHz
Transmitter Power (EIRP)	2.4 GHz: ≤27 dBm (FCC); ≤20 dBm (SRRC); ≤20 dBm (CE) 5.8 GHz: ≤30 dBm (FCC); ≤26 dBm (SRRC); ≤14 dBm (CE)
Max Transmission Distance	2.4 GHz: 0.6 mi (1000 m, FCC); 0.3 mi (500 m, SRRC); 0.3 mi (500 m, CE) 5.8 GHz: 2.5 mi (4000 m, FCC); 1.9 mi (3000 m, SRRC); 0.2 mi (400 m, CE) Unobstructed and free of interference

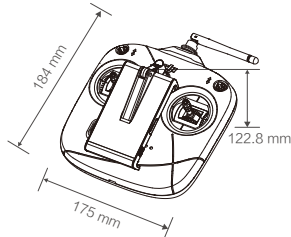
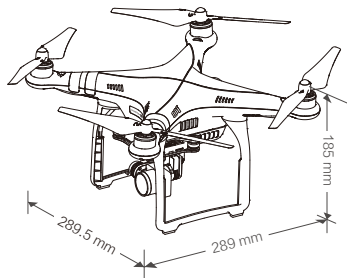
Operating Temperature Range	32° to 104° F (0° to 40° C)
Battery	2,600 mAh LiPo 18650
Mobile Device Holder	Tablets and smartphones

• Charger

Voltage	17.4 V
Rated Power	57 W

• Intelligent Flight Battery (PH3-4480 mAh-15.2 V)

Capacity	4480 mAh
Voltage	15.2 V
Battery Type	LiPo 4S
Energy	68 Wh
Net Weight	365 g
Charging Temperature Range	41° to 104° F (5° to 40° C)
Max Charging Power	100 W



Download the user manual in the DJI GO app for more information.

※ This content is subject to change without prior notice.

PHANTOM is a trademark of DJI.
Copyright © 2017 DJI All Rights Reserved.

Designed by DJI. Printed in China.

PHANTOM 3 SE