

ONKYO

Basic Manual

Mode d'Emploi Base

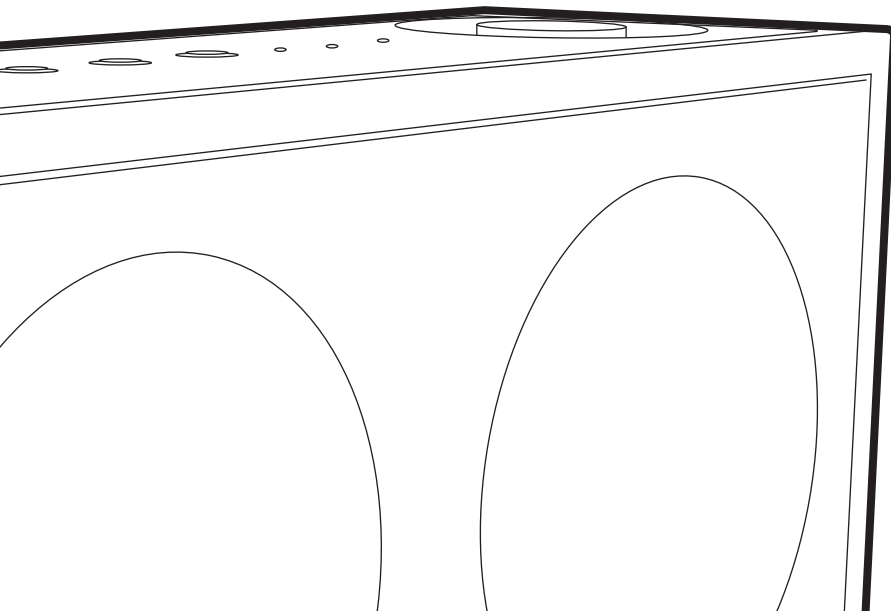
Manual Básico

Manuale di Base

Grund Anleitung

Basis Handleiding

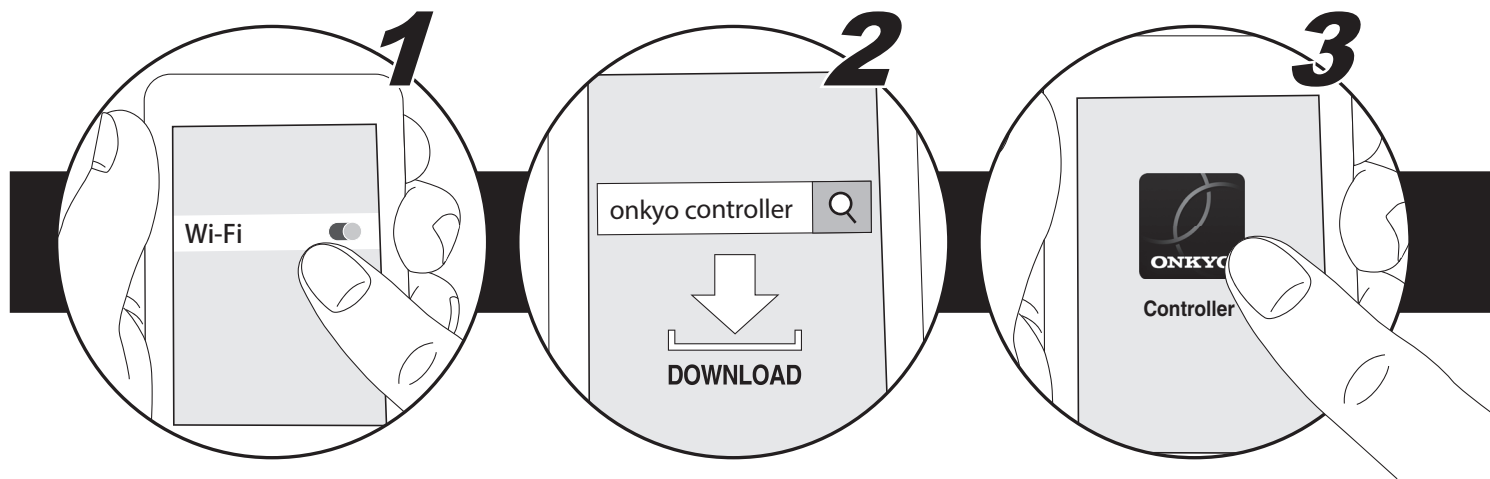
Grundläggande bruksanvisning



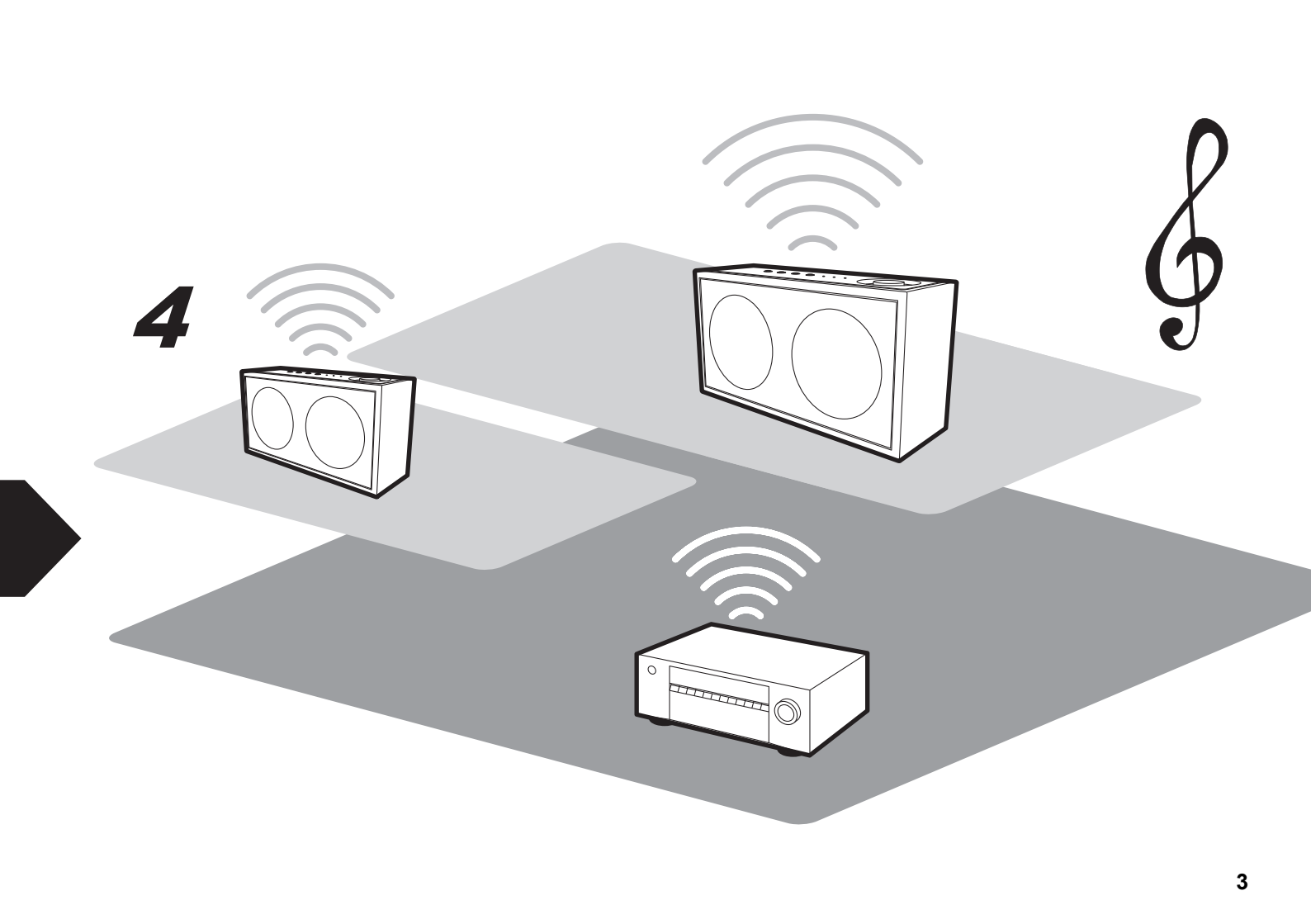
WIRELESS AUDIO SYSTEM

NCP-302

Setup & Play **with App**



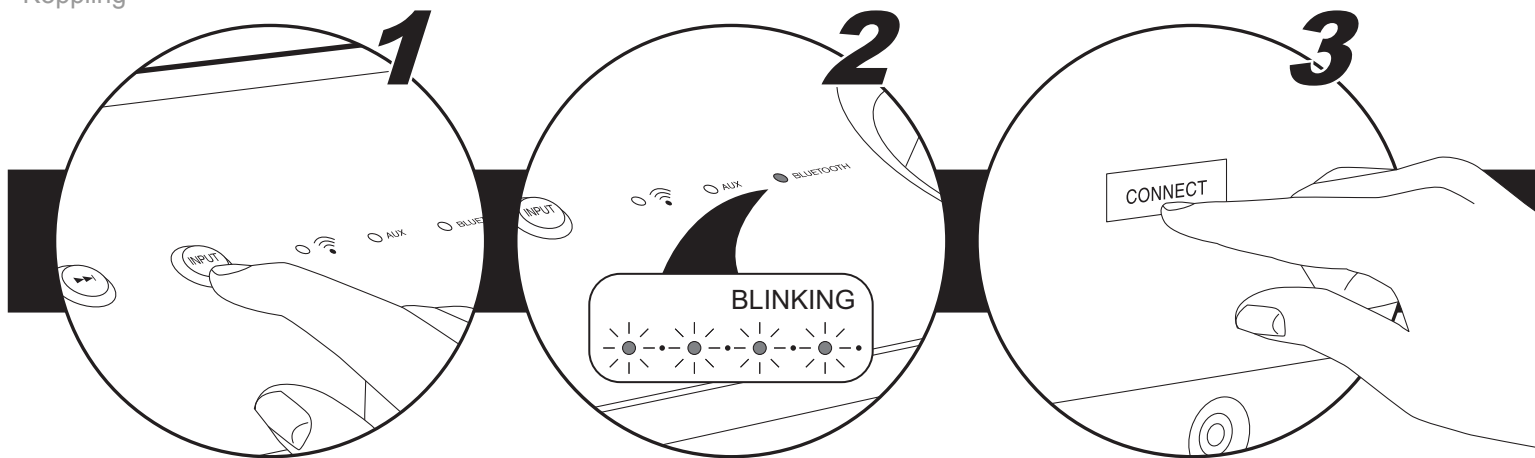
Configuration & Lecture avec l'appli / Configuración y reproducción con la aplicación / Setup e riproduzione con app /
Einrichtung und Wiedergabe per App / Installen en Afspejen met App / Ställ in och spela upp med appen



Bluetooth® Pairing & Play

Pairing

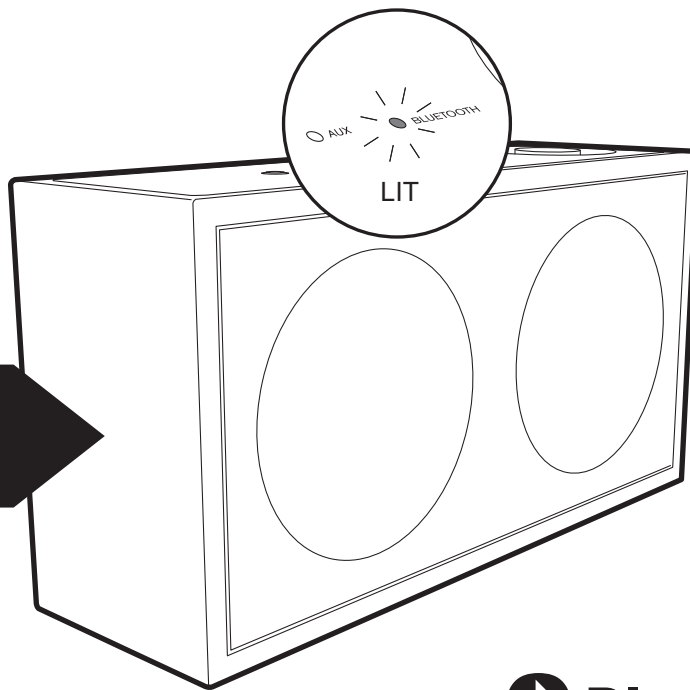
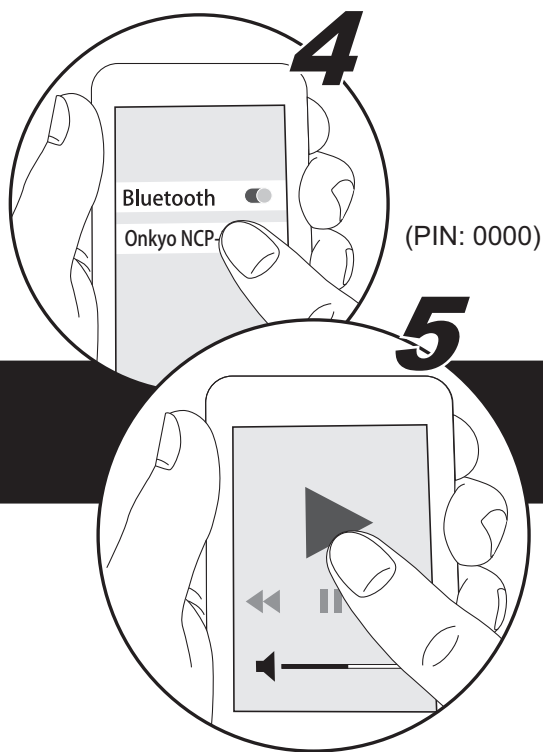
Appairage / Emparejamiento /
Abbinamento / Kopplung / Pairen /
Koppling



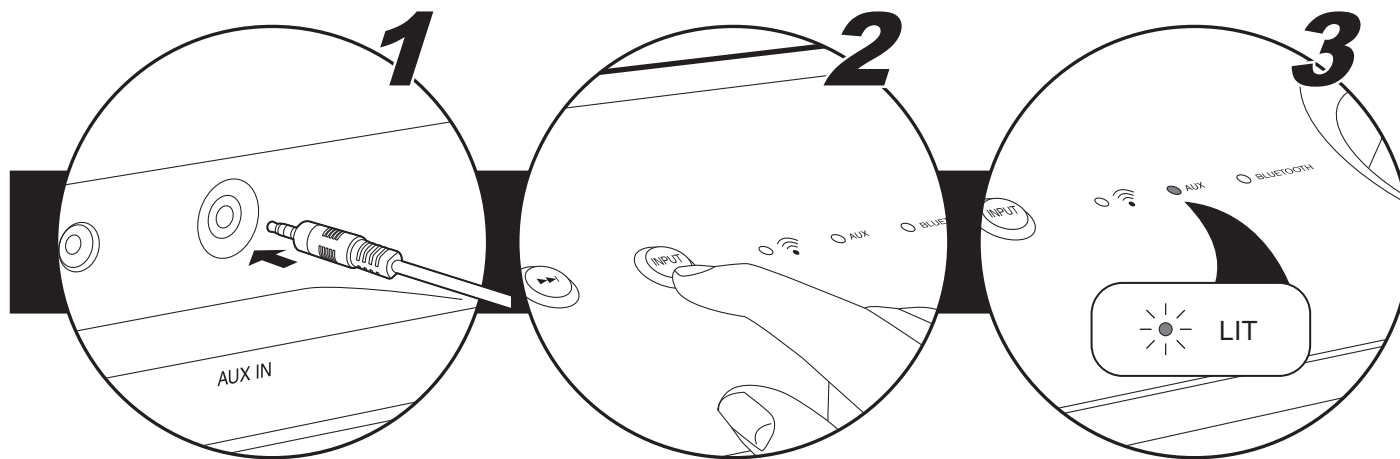
Appairage & Lecture Bluetooth / Emparejamiento de Bluetooth y reproducción / Abbinamento e riproduzione Bluetooth / Bluetooth-Kopplung und -Wiedergabe / Bluetooth Pairen en Afspelen / Koppling med Bluetooth och uppspelning

Play

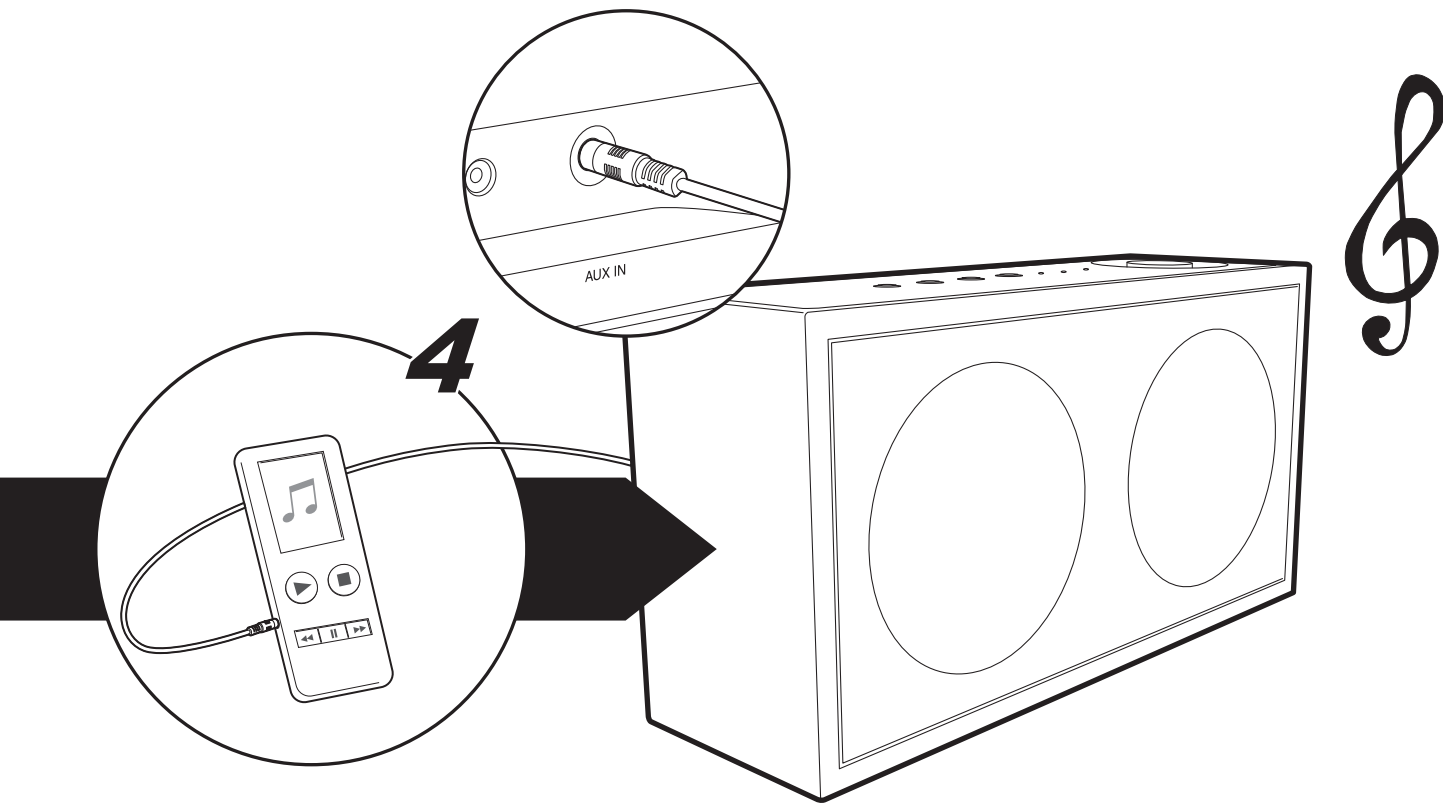
Lecture / Reproduccion / Riproduzione /
Wiedergabe / Afspelen / Uppspelning



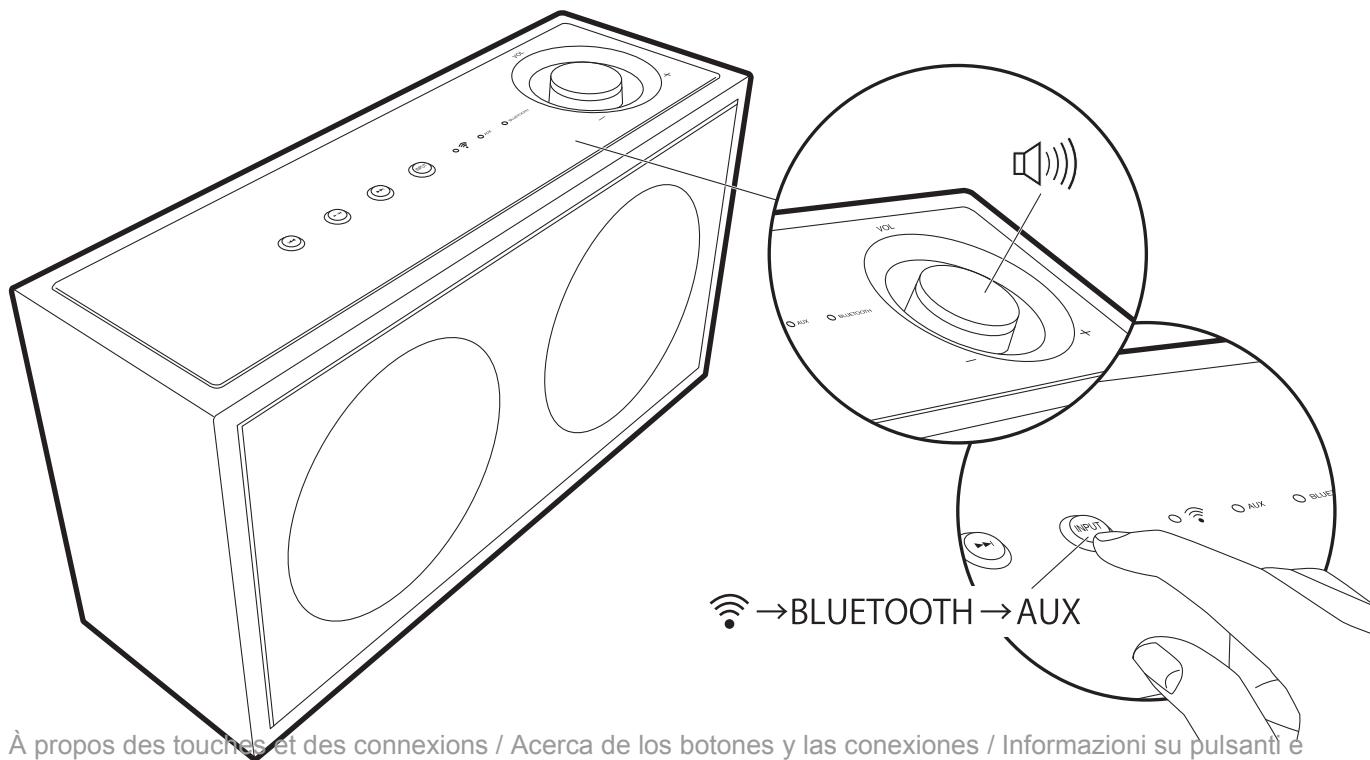
AUX Input



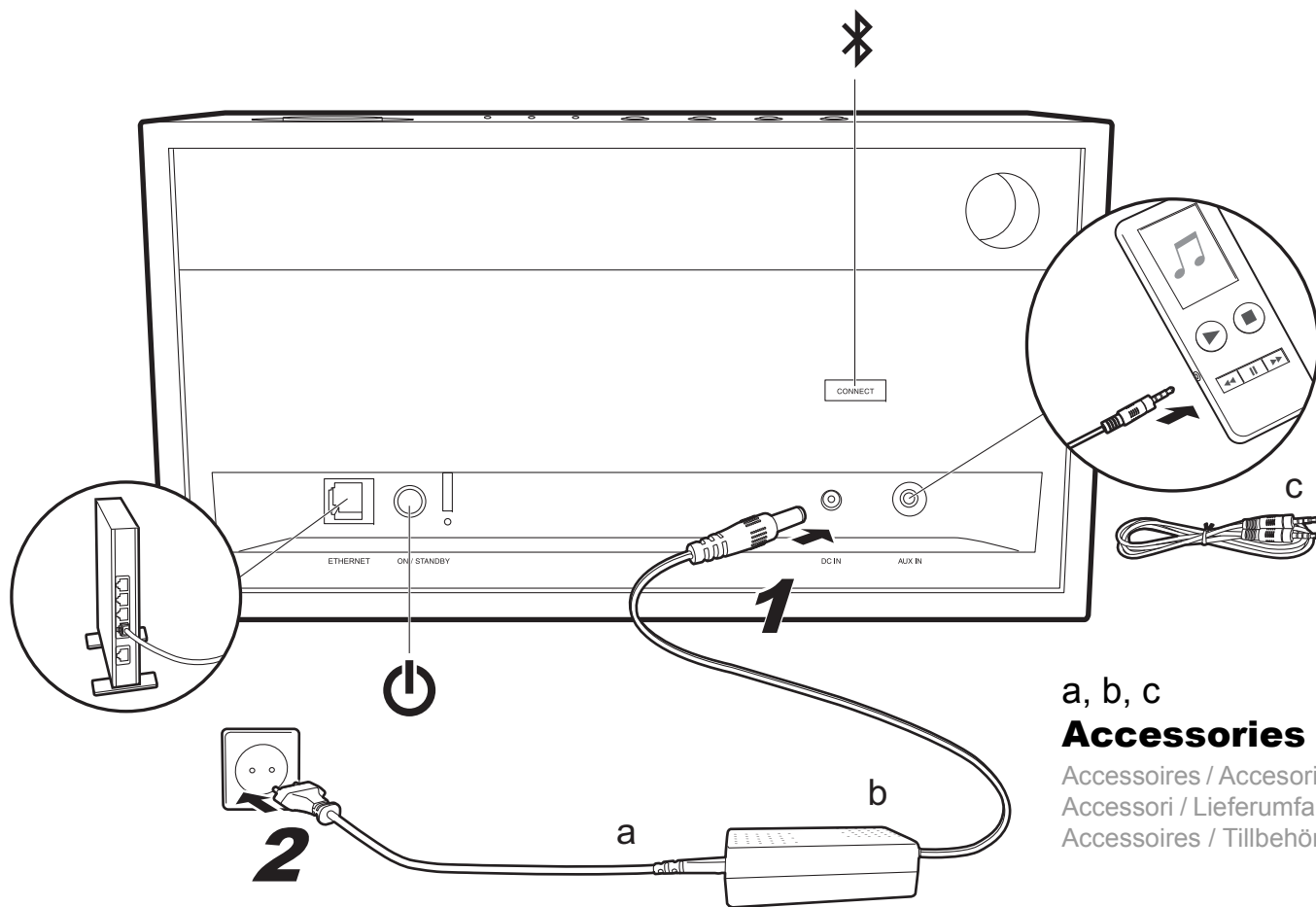
Entrée AUX / Entrada AUX / Ingresso AUX / AUX-Eingang / AUX-ingang / AUX-ingång



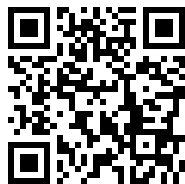
About **Buttons & Connections**



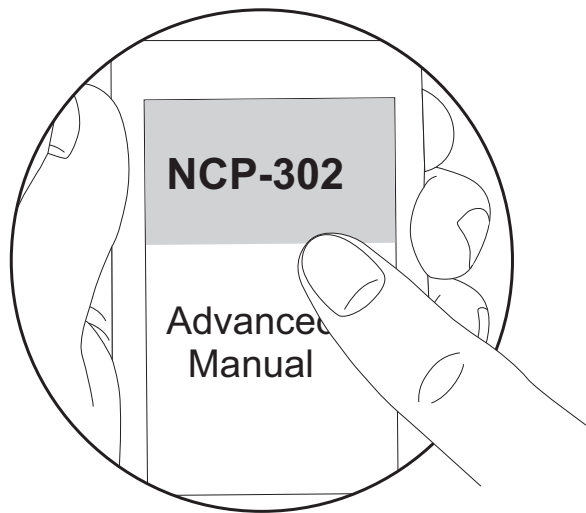
À propos des touches et des connexions / Acerca de los botones y las conexiones / Informazioni su pulsanti e collegamenti / Informationen zu Tasten und Verbindungen / Over Knoppen en Verbindingen / Om knappar och anslutningar



Advanced Manual / Q&A found here



<http://www.onkyo.com/manual/ncp/adv.pdf>



Mode d'emploi avancé/Q&R se trouvent ici / El Manual avanzado/P&R lo puede encontrar aquí / Manuale avanzato/
Domande e risposte si trovano qui / Erweiterte Bedienungsanleitung/Fragen und Antworten hier erhältlich / Geavanceerde
Gebruiksaanwijzing/Vragen en Antwoorden hier beschikbaar / Den avancerade bruksanvisningen/frågor och svar finns här



The Wi-Fi CERTIFIED Logo is a certification mark of Wi-Fi Alliance®.



The Bluetooth® word mark and logos are registered trademarks owned by the Bluetooth SIG, Inc.



Apple and the Apple logo are trademarks of Apple Inc., registered in the U.S. and other countries. App Store is a service mark of Apple Inc.



Google Play, Google Play logo are trademarks of Google Inc.



This Mark Certifies that this product is compliant with the BLACKFIRE ALLIANCE Standard.
Please refer to WWW.BLACKFIREALLIANCE.COM for more information.
BLACKFIRE™ is a Registered Trademark (No. 85,900,599) of BLACKFIRE RESEARCH CORP. All rights reserved.



FireConnect™ is technology powered by BlackFire Research.

ONKYO

2-3-12 Yaesu, Chuo-ku, Tokyo 104-0028 JAPAN
<http://www.onkyo.com/>

<U.S.A.>

18 Park Way, Upper Saddle River, N.J. 07458, U.S.A.
For Dealer, Service, Order and all other Business Inquiries:
Tel: 201-785-2600 Fax: 201-785-2650
<http://www.us.onkyo.com/>

For Product Support Team Only:
1-800-229-1687
<http://www.us.onkyo.com/>

<Germany>

Gutenbergstrasse 3, 82178 Puchheim, Germany
Tel: +49-8142-4401-0 Fax: +49-8142-4208-213
<http://www.eu.onkyo.com/>

<UK>

Anteros Building, Odyssey Business Park, West End Road,
South Ruislip, Middlesex, HA4 6QQ United Kingdom
Tel: +44 (0)871-200-1996 Fax: +44 (0)871-200-1995

The above-mentioned information is subject to change without prior notice.
Visit the Onkyo web site for the latest update.

<Hong Kong>

Unit 1033, 10/F, Star House, No 3, Salisbury Road,
Tsim Sha Tsui Kowloon, Hong Kong.
Tel: +852-2429-3118 Fax: +852-2428-9039
<http://www.hk.onkyo.com/>

<PRC>

302, Building 1, 20 North Chaling Rd., Xuhui District, Shanghai,
China 200032,
Tel: +86-21-52131366 Fax: +86-21-52130396
<http://www.cn.onkyo.com/>

<Asia, Oceania, Middle East, Africa>

Please contact an Onkyo distributor referring to Onkyo SUPPORT site.
<http://www.intl.onkyo.com/support/>

Корпорация О энд Пи
2-3-12, Яэсу, Чуо-ку, г. Токио, 104-0028, ЯПОНИЯ

(C) Copyright 2016 Onkyo & Pioneer Corporation Japan. All rights reserved.
Printed in China / Imprimé en Chine / Напечатано в Китае

SN 29402570A

F1610-1



* 2 9 4 0 2 5 7 0 A *