

KESTREL / KYTE SERIES



The Kestrel / Kyte Series is a fully featured, highly versatile technical backpack line capable of any number of adventures and trips.

[†]Available in select non-U.S. markets only.

OWNER'S MANUAL



ospreyeurope.com

OVERVIEW



SHARED FEATURES

- 1 Fixed top lid provides top loader access to main compartment*
- 2 Zippered hipbelt pockets
- 3 Top lid zippered pocket and under lid zippered mesh pocket*
- 4 External hydration sleeve
- 5 Front panel stretchmesh pocket
- 6 Tuck away ice tool loop and bungee tie-offs
- 7 Dual front panel daisy chains
- 8 Integrated raincover
- 9 Web attachment points on top lid*
- 10 Upper and lower reverse StraightJacket™ side compression straps
- 11 Torso adjustable harness**
- 12 Stow-on-the-Go™ trekking pole attachment
- 13 Dual stretchmesh side pockets
- + Internal compression strap*

*Not included on Kestrel 32.

**Not included on Kestrel 28.

FABRIC

MAIN 210D Nylon Double Diamond Ripstop

ACCENT 420HD Nylon Packcloth

BOTTOM 420HD Nylon Packcloth

OVERVIEW



KESTREL 68[†]

MEN'S

SPECS	S/M	M/L
Cubic Inches	4028	4150
Liters	66	68
Pounds	3.88	4.01
Kilograms	1.76	1.82
Inches	30h x 16w x 17d	
Centimeters	76h x 40w x 44d	
LOAD RANGE	30-50 lbs 14-23 kg	

[†] Available in select non-U.S. markets only



UNIQUE FEATURES

- 1 Removable top lid
- 2 Zippered sleeping bag compartment with floating divider
- 3 Removable sleeping pad straps
- 4 Side zipper access to main compartment
- 5 Full length vertical zippered side pocket

KESTREL 58[†]

MEN'S

SPECS	S/M	M/L
Cubic Inches	3417	3539
Liters	56	58
Pounds	3.75	3.92
Kilograms	1.70	1.78
Inches	27h x 15w x 17d	
Centimeters	69h x 39w x 43d	
LOAD RANGE	30-50 lbs 14-23 kg	

[†] Available in select non-U.S. markets only



UNIQUE FEATURES

- 1 Removable top lid
- 2 Zippered sleeping bag compartment with floating divider
- 3 Removable sleeping pad straps
- 4 Side zipper access to main compartment
- 5 Full length vertical zippered side pocket

KESTREL 48

MEN'S

SPECS	S/M	M/L
Cubic Inches	2807	2929
Liters	46	48
Pounds	3.51	1.67
Kilograms	1.59	1.67
Inches	28h x 15w x 16d	
Centimeters	72h x 38w x 40d	
LOAD RANGE	25-40 lbs 11-18 kg	



UNIQUE FEATURES

- 1 Zippered sleeping bag compartment with floating divider
- 2 Removable sleeping pad straps
- 3 Side zipper access to main compartment
- 4 Full length vertical zippered side pocket

OVERVIEW



KESTREL 38

MEN'S

SPECS	S/M	M/L
Cubic Inches	2197	2319
Liters	36	38
Pounds	3.02	3.13
Kilograms	1.37	1.42
Inches	28h x 15w x 16d	
Centimeters	71h x 38w x 40d	
LOAD RANGE	25-40 lbs 11-18 kg	



UNIQUE FEATURES

- 1 Zippered sleeping bag compartment with floating divider
- 2 Removable sleeping pad straps
- 3 Side zipper access to main compartment

KESTREL 32

MEN'S

SPECS	S/M	M/L
Cubic Inches	1831	1953
Liters	30	32
Pounds	2.82	2.91
Kilograms	1.28	1.32
Inches	24h x 12w x 13d	
Centimeters	60h x 30w x 32d	
LOAD RANGE	15-30 lbs 7-14 kg	



UNIQUE FEATURE

- 1 Wide opening panel access to main compartment

KESTREL 28

MEN'S

SPECS	S/M	M/L
Cubic Inches	1587	1709
Liters	26	28
Pounds	2.60	2.73
Kilograms	1.18	1.24
Inches	25h x 12w x 13d	
Centimeters	64h x 30w x 32d	
LOAD RANGE	15-30 lbs 7-14 kg	



OVERVIEW



KYTE 66[†]

WOMEN'S

SPECS	WXS/S	WS/M
Cubic Inches	3906	4028
Liters	64	66
Pounds	3.73	3.90
Kilograms	1.69	1.77
Inches	29h x 16w x 16d	
Centimeters	74h x 40w x 41d	

LOAD RANGE 30-50 lbs | 14-23 kg

[†] Available in select non-U.S. markets only



UNIQUE FEATURES

- 1 Removable top lid
- 2 Zippered sleeping bag compartment with floating divider
- 3 Removable sleeping pad straps
- 4 Side zipper access to main compartment
- 5 Full length vertical zippered side pocket

KYTE 46

WOMEN'S

SPECS	WXS/S	WS/M
Cubic Inches	2685	2807
Liters	44	46
Pounds	3.42	3.55
Kilograms	1.55	1.61
Inches	28h x 14w x 14d	
Centimeters	70h x 35w x 36d	

LOAD RANGE 25-40 lbs | 11-18 kg



UNIQUE FEATURES

- 1 Zippered sleeping bag compartment with floating divider
- 2 Removable sleeping pad straps
- 3 Side zipper access to main compartment
- 4 Full length vertical zippered side pocket

KYTE 36

WOMEN'S

SPECS	WSX/S	WS/M
Cubic Inches	2075	2197
Liters	34	36
Pounds	3.09	3.20
Kilograms	1.40	1.45
Inches	27h x 12w x 12d	
Centimeters	68h x 30w x 31d	

LOAD RANGE 25-40 lbs | 11-18 kg



UNIQUE FEATURES

- 1 Zippered sleeping bag compartment with floating divider
- 2 Removable sleeping pad straps
- 3 Side zipper access to main compartment

SUSPENSION

SUSPENSION

1 LIGHTWIRE™ SUSPENSION

- + 3.5mm LightWire™ peripheral frame effectively transfers the load from harness to hipbelt*

- + Atilon framesheet spreads load across the entire backpanel to the peripheral frame

* Not included in Kestrel 28L

2 AIRSCAPE™ BACKPANEL

- + Mesh covered ridged foam allows maximum ventilation while keeping the load close to the body

3 SPACER MESH HARNESS AND HIPBELT

- + Soft, edgeless padded mesh offers a soft breathable contact surface and large load support
- + Adjustable sternum strap with rescue whistle



SIZING / FIT

KESTREL - MEN'S SIZING

S/M 16-20" / 41-51 cm

M/L 19-23" / 48-58 cm

KYTE - WOMEN'S SIZING

WXS/S 13-17" / 33-43 CM

WS/M 16-20" / 41-51 CM



HARNESS FIT

The harness straps should wrap fully around your shoulders with no gaps between the pack and your back. The padded part of the harness straps should end 1 1/2.5cm - 2"/5cm below the armpits and the sternum strap adjusted to approximately 2"/5cm below the collarbone.

SIZING / FIT



HARNESS SIZING

- A Completely loosen the pack's hipbelt straps, harness straps and load lifters.



- B Load the pack with 10-20lbs / 4-9kg of gear.



- C Put on the pack ensuring the hipbelt is centered and resting over the user's hipbones. The hipbelt padding should sit half above and half below the hipbone. Buckle the hipbelt and tighten the hipbelt straps.

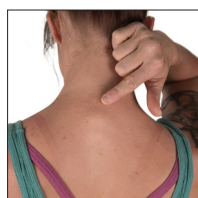


- D Tighten the shoulder harness straps by pulling them down and back. Adjust and buckle the sternum strap 2"/5cm below the collar bone. Tighten the load lifters to transfer the weight off of the shoulders.



- E Find the harness yoke or where the harness straps come together near the users neck. The yoke should be 2"/5cm below the C7 vertebrae. The C7 vertebrae can be located by tilting the head down and finding the bone that protrudes at the base of the neck.
- F Make note of how far the yoke is from the C7 vertebrae. Based on this measurement the torso can be adjusted to the desired 2"/5cm.

C7 VERTEBRA



ADJUSTING HARNESS

- A Completely loosen the pack's load lifters and harness straps.
- B Locate the arrow icon at the top of the ridged foam backpanel.
- C Slide a hand between backpanel and shoulder harness to pull apart the hook and loop closure.
- D Slide the shoulder harness up or down to correspond to the appropriate torso length.
- E Firmly press down on the ridged foam backpanel to re-engage hook and loop closure.

WOMEN'S SPECIFIC FIT

- + The unique suspended mesh located on the shoulders, backpanel, lumbar and hipbelt contour to a wide variety of body shapes and sizes to create a custom fit to your body.
- + The pack shape is narrower and deeper, allowing greater freedom of movement and increases stabilization by lowering the position of the load to a woman's center of gravity.
- + The shoulder harness is designed with different curves to create an anatomical fit for a woman's neck, shoulders and chest.
- + Women's hips are conically shaped with a larger difference between the waist and hip measurements. The hipbelts are shaped and angled to accommodate this difference, which allows a more comfortable load transfer and support.

FEATURE DETAILS



REMOVABLE FLOATING TOP LID

68L / 66L / 58L

The floating top lid can extend to accept oversized loads or can be removed from the pack body for weight saving lidless use.

- A Release the top lid retention strap buckles on the front side of the pack.
- B Unthread the webbing through the duckbill buckles located on the back side of the top lid.
- C Reverse to reattach.



COMPRESSION STRAPS

68L / 66L / 58L / 48L / 46L / 38L / 36L / 32L / 28L

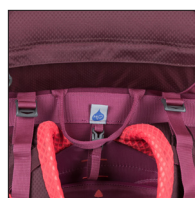
Dual upper side compression straps stabilize loads while lower, cross functional compression straps also serve as external gear carry straps. To adjust, slide the nylon strap through the slider buckle and cinch it to compress/carry.



INTERNAL COMPRESSION STRAP

68L / 66L / 58L / 48L / 46L

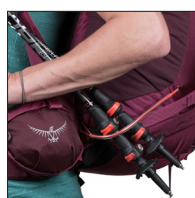
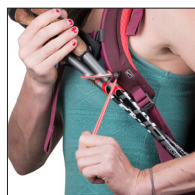
Once your pack is loaded, clip and tighten the red internal compression strap to stabilize the load.



EXTERNAL RESERVOIR SLEEVE

68L / 66L / 58L / 48L / 46L / 38L / 36L / 32L / 28L

An external reservoir sleeve is located behind the shoulder harness, allowing easy loading/unloading of a hydration reservoir. Placing your reservoir inside the sleeve helps provide proper weight distribution when carrying your pack. There is a buckled loop at the top of the sleeve to attach to the reservoir to minimize slipping.



STOW-ON-THE-GO™ TREKKING POLE ATTACHMENT

68L / 66L / 58L / 48L / 46L / 38L / 36L / 32L / 28L

Osprey's Stow-on the-Go™ trekking pole attachment is designed to quickly attach and carry trekking poles while wearing a pack.

- A Adjust the trekking poles to their minimum length.
- B Locate the elasticized loop on the lower left side of pack. While pulling the loop out from the pack, insert the basket end of the trekking poles into the loop.
- C On the left harness strap locate the trekking pole icon. Pull up on the cord to open, place pole handles in the loop and tighten with the cord lock to secure.
- D Reverse these steps to remove the trekking poles.

FEATURE DETAILS



TOOL ATTACHMENT

68L / 66L / 58L / 48L / 46L / 38L / 36L / 32L / 28L

The dual ice tool loops and clove hitch style bungee tie-offs provide secure tool attachment and transport.



- A Slide the tool shaft through the top of the ice tool loop and flip the shaft up toward the top of the pack.
- B Loosen the bungee cord lock and route the tool handle through the bungee. Tighten the cord lock nesting it into the Y-Clip to secure the tool into place.
- C Reverse to remove.



REMOVABLE SLEEPING PAD STRAPS

68L / 66L / 58L / 48L / 46L / 38L / 36L

Sleeping pad straps allow for quick, secure external gear attachment. They can be fully removed to save weight.



INTEGRATED REMOVABLE RAINCOVER

68L / 66L / 58L / 48L / 46L / 38L / 36L / 32L / 28L

- A Locate the raincover icon near the base of the pack.
- B Unzip the raincover compartment.
- C Pull raincover from compartment and slip over top and bottom of the pack.
- D Tension into place using the cord lock at the bottom of the raincover.
- E Reverse this process to return raincover to compartment.
- F To remove the raincover altogether, unfasten the hook and loop strap from the cord loop inside the raincover compartment.

Tip: To prevent mildew, remove raincover and allow to dry entirely after use in the rain.

PACK / RESERVOIR MAINTENANCE



Your Osprey pack is an extremely durable product and is built for years of use. However, some basic pack maintenance will help ensure your pack lasts a lifetime.

OSPREY PACKS

STANDARD MAINTENANCE

- + After each trip be sure to clean out your pack thoroughly.
- + Clean the zippers regularly using mild soap, warm water and soft brush. This will help keep them in proper working condition.
- + If your pack is wet, hang it to dry out of direct sunlight.
- + Loosen all the straps.
- + Wash your pack if dirt, sweat, salt and stains have worked their way into fabrics, webbing or mesh.
[Do not immerse travel packs in water with our HighRoad™ Wheeled Chassis.]

WASHING YOUR PACK

- A Empty the pack including any food, dirt or spilled contents.
- B If your pack has a removable harness and hipbelt, remove them from the pack body.
- C Do NOT wash your pack in a washing machine. Clean your pack and components in a bathtub or large sink using a mild detergent and warm water.
- D Agitate the pack gently. Scrub the inside and outside of all compartments including the pockets with a soft brush.
- E Clean the zippers using a mild soap, warm water and a soft brush. Flush water and soap through the buckles. Keeping dirt and debris out of the zippers and buckles will help keep them in proper working condition.
- F Drain the dirty water from the bathtub or sink and refill with cool clean non-soapy water. Rinse the pack thoroughly. Repeat this step as necessary.
- G Hang your pack to dry outside or in a well ventilated area, out of direct sunlight.

WHEELED TRAVEL LUGGAGE

[Do not immerse travel packs in water with our HighRoad™ Wheeled Chassis.]

- A After each trip, empty the pack including any food, dirt or spilled contents.
- B Clean the zippers regularly using mild soap, warm water and soft brush. This will help keep them in proper working condition.
- C Wipe the exterior of the chassis with a damp cloth or sponge.
- D Clean the pack fabric by scrubbing stains and dirt with warm water, mild detergent and a soft brush or sponge.
- E Use a wet towel with clean non-soapy water to wipe away any soap residue on the pack.
- F Hang your pack to dry outside or in a well ventilated area, out of direct sunlight.

RECOMMENDED CLEANING PRODUCTS

Osprey recommends Nikwax® products for pack care. Be sure to read label directions carefully before applying any product to your pack.

Tech Wash® - Use this with warm water for washing and cleaning your packs or luggage.

Tent & Gear Solar Proof® - Use this spray-on product to protect your packs from UV exposure and to improve water repellency.



For complete instructions on cleaning your Osprey pack, visit: ospreypacks.com/PackTech/PackCare.

OSPREY RESERVOIRS

RESERVOIR STANDARD MAINTENANCE

- + Rinsing out your reservoir after each use should keep your reservoir fresh, especially when using sugary drink mixes.
- + Periodically use Osprey's Hydraulics™ Cleaning Tablets to clean your reservoir.
- + Iodine or other purifying tablets used in your reservoir will not affect the quality of your reservoir. However these tablets may stain the reservoir over time.
- + Freezing your reservoir will not effect the quality of the reservoir. However if the reservoir is filled with water, be aware that water expands when it freezes and can damage your reservoir if it is overfilled.
- + Do NOT pour boiling water into the reservoir. This can damage the reservoir and will void your warranty.
- + Watch "Cleaning an Osprey Hydraulics™ Reservoir" video on Osprey Packs YouTube® page.

CLEANING YOUR RESERVOIR (WITH OSPREY HYDRAULICS™ CLEANING TABLETS)

- A Fill reservoir with warm water. Do not use bleach or boiling water.
- B Add one cleaning tablet to reservoir and close the cap.
- C Let tablet dissolve for 5 minutes with the reservoir laying on its back.
- D Shake the reservoir for 30 seconds to mix and spread the solution.
- E Pinch the bite valve and squeeze the reservoir to remove air and fill the reservoir hose and bite valve with solution.
- F Let the reservoir sit for 15 minutes and then pour out solution.
- G Rinse the reservoir and tube with clean cool water.
- H Hang your reservoir to dry in a well ventilated area.

DEEP CLEANING YOUR RESERVOIR (WITH OSPREY HYDRAULICS™ CLEANING KIT)

- 1 Rinse out the reservoir and fill it with warm water and a mild dish detergent. Do not use bleach or boiling water.
- 2 With the large cleaning brush from Osprey's Hydraulics™ Cleaning Kit scrub the interior of the reservoir.
- 3 Remove the hose from the reservoir and the bite valve from the hose and use the small brush from Osprey's Hydraulics™ Cleaning Kit to scrub the interior of the hose.
- 4 Remove the silicone bite valve cover and clean it and the bite valve with warm soapy water.
- 5 Rinse the interior and exterior of the reservoir, hose and bite valve parts with cool clean water.
- 6 Let the hose and bite valve dry in a well-ventilated area.
- 7 Insert Osprey's Hydraulics™ Cleaning Kit drying rack into the reservoir and hang to dry in a well ventilated area.

For complete instructions on cleaning your Osprey reservoir watch, "Cleaning an Osprey Hydraulics™ Reservoir" at youtube.com/ospreypacks.

OSPREY ACCESSORIES

Customize and protect your pack with Osprey's full line of accessories.

For the full lineup, please visit your local Osprey retailer or visit:

ospreypacks.com.

PACK YOUR PACK

Loading your pack correctly optimizes comfort while you are carrying it. For complete information visit:

ospreypacks.com/PackTech/HowToPackYourPack

GUARANTEE

At Osprey, sustainability is designed into our packs, which are built to last a lifetime and backed by a superb guarantee, no matter how hard you are on your gear. Visit **ospreypacks.com** for details.

QUESTIONS?

Contact Osprey Customer Service. Real help from real people.

Scroll over the customer service tab at **ospreypacks.com**.

OSPREY PACKS, INC.

115 PROGRESS CIRCLE

CORTEZ, CO 81321 USA

866-284-7830

ospreypacks.com/PackTech/OwnersManuals

CN 如欲觀看繁體中文使用者手冊，請瀏覽 www.ospreypacks.com

请访问www.ospreypacks.com获得该用户手册的中文版本

JP 日本語版オーナーズマニュアルはオスプレー社の

Web サイト (<http://www.ospreypacks.com>)

からダウンロードすることができます。

FR Veuillez visiter www.ospreypacks.com pour une version en français de ce guide d'utilisation.

DE Auf der Homepage www.ospreypacks.com finden Sie die deutsche Version dieses enutzerhandbuchs.

ES Visita por favor www.ospreypacks.com para ver la versión de nuestro manual en Español.

IT Visita il sito www.ospreypacks.com per la versione in Italiano del manuale d'uso.

KR www.ospreypacks.com/PackTech/OwnersManuals

에서 사용자 설명서를 다운로드하세요

OWNER'S MANUAL



ospreyeurope.com