

Power to
tell stories

XA25 XA20

you can



Canon

High-specification, ultra-compact professional camcorders

Canon's latest entry-level professional camcorders combine outstanding image quality with dual-format recording in a compact body, making them ideal for all sorts of content creation.



XA25

For accomplished professionals and ambitious amateurs

Canon's HD Camcorder technology offers the ultimate in picture quality, thanks to precision engineering and know-how accumulated over more than 50 years at the forefront of professional imaging. With our unrivalled reputation in HD television broadcast lenses, Canon's optical excellence will satisfy the demands of any film-maker, news-gatherer or creative professional.

Sporting an impressive combination of professional features and an ultra-compact body, the XA25 and XA20 make it easier than ever to capture creative content in any setting or scenario, and share or broadcast on the go.



XA20

XA25 & XA20

The XA25 and XA20 are ideal for professional users looking to capture high quality footage and advanced amateur videographers who wish to extend their capabilities.

Both camcorder models are ideally suited for television production such as news and documentaries, independent movies, weddings and events, as well as commercial applications including public service broadcasting and corporate video.

The XA25 benefits from a HD/SD-SDI terminal which allows the camcorder's output to be connected to external monitoring and recording, or for studio or satellite use.

Outstanding image quality enabled by breakthrough technology

The XA series benefits from a completely new imaging system, engineered to provide outstanding image quality and versatility.



Wide angle: 26.8mm*



20x Zoom angle: 576mm**

20x
OPTICAL ZOOM

26.8mm
WIDE

First-class optics

The stunning new 26.8mm wide angle lens, designed specifically for these models, delivers outstanding image quality employing technology usually only found in top-of-the-range models, while the 20x optical zoom gets you closer to the action.

A new 8-blade circular aperture, based on electromagnetic diaphragm technology, enables smoother, more natural out-of-focus areas for beautiful 'bokeh' effects – particularly in night skylines and illumination photos.



Newly-designed sensor

The 2.91 Megapixel HD CMOS Pro sensor provides outstanding dynamic range and low-light performance. The increased sensor size maximises photosite area, combining with a highly sophisticated image processing system to reduce image noise and increase sensitivity in low light environments.

*When Dynamic mode is OFF. Minimum focus length is 28.8mm when Dynamic mode is ON.

**When Dynamic mode is On.

OPTICAL IMAGE STABILIZER DYNAMIC

Capture more than ever

Image stabilization reduces blur when the camcorder is moving or when it is handheld. Standard, Powered and Dynamic Optical Image Stabilisation compensate for shake across 5 axes, to help reduce picture shake and distortion in any conditions – even when shooting while walking.



3.5" WIDE
Touch

OLED

See sharper

Despite their compact size, these camcorders provide high-quality monitoring for comfortable shooting ergonomics, allowing you to effortlessly frame your subjects and review footage. The fold-out OLED touch screen with a 1.23 million dot resolution offers better response times, definition, contrast and colour reproduction than LCD equivalents, reducing motion blur to a bare minimum. The 0.61cm 1.56 million dot tilt-able EVF can adjust smoothly up to 45° to accommodate creative shooting positions, or for filming in awkward or confined spaces.



New HD Video Lens

New HD CMOS
PRO Sensor

New DIGIC DV 4 image
processing platform



Superb processing capability

The outstanding processing capability provided by DIGIC DV 4 delivers enhanced image reproduction. As well as smooth gradation and faithful colour reproduction, it offers support for recording at higher data rates and works with the sensor to eliminate camera shake.

Small and perfectly formed

The XA range is compact enough to appeal to those looking for a discreet camcorder for filming in sensitive or confined environments while still producing high quality video images.



Outstanding handling

The lightweight, ultra-compact XA range has been ergonomically designed to maximise shooting comfort and usability, even during prolonged periods of hand-held filming. The controls are intuitively laid out to make the camera feel like a natural extension of the operator's body. Design enhancements include a zoom rocker, for more precise, stable shooting, and joystick for single-handed operation.

Easily attached and removed, the top-mounted handle houses a range of additional controls including XLR inputs and an IR lamp for night shooting.



Manual Adjustment Selection



XLR terminals
(Input 1 / Input 2)

Professional audio

Without adding to the camcorders compact size two XLR terminals on the detachable handle provide professional audio inputs, supporting high quality linear PCM recording. Sensitivity can be set for Line, Mic or Mic with Phantom Power to ensure clear, natural sound and channels that can be controlled independently.



Versatile recording options

Get the flexibility to capture full HD footage for vivid detail and a lower resolution version for ease of sharing via email or the web, or for creating a back-up on the go.



Two cards, one camera

Designed for maximum flexibility, both models support simultaneous recording in two different formats or bitrates. AVCHD (up to 28Mbps) and MP4 (up to 35Mbps) provide the high bitrates needed for many professional applications.

Footage is recorded to dual SD card slots in a range of resolutions and frame rates up to 1080/50p, with slow and fast motion options supported in MP4 mode – offering greater choice of setting depending on creative requirements.

Both also support simultaneous recording of different formats to each card – giving users the ability to capture high-quality Full HD footage in their desired format, along with smaller MP4 files.

Delivered by the power of DIGIC DV 4, these smaller files can be shared quickly and easily for time-critical applications, such as reporting breaking news, with the full-resolution version retained for later use.

AVCHD
Progressive

MP4
50P/35Mbps

AVCHD + MP4

AVCHD			MP4		
Bit Rate	Size	Frame Rate	Bit Rate	Size	Frame Rate
28Mbps	1920x 1080	50.00P	Simultaneous recording not available		
24Mbps	1920x 1080	50.00i / 25.00P	4Mbps	1280x 720	25.00P
17Mbps	1920x 1080		3Mbps	640x 360	25.00P
5Mbps	1440x 1080				

MP4 + MP4

MP4			MP4		
Bit Rate	Size	Frame Rate	Bit Rate	Size	Frame Rate
35Mbps	1920x 1080	50.00P	Simultaneous recording not available		
24Mbps	1920x 1080	25.00P	24 / 17Mbps	1920x 1080	25.00P
17Mbps	1920x 1080	25.00P	17Mbps	1920x 1080	25.00P
24Mbps	1920x 1080	25.00P	4Mbps	1280x 720	25.00P
17Mbps	1920x 1080	25.00P	3Mbps	640x 360	25.00P
4Mbps	1280x 720	25.00P			
3Mbps	640x 360	25.00P			

AVCHD + AVCHD

AVCHD			AVCHD		
Bit Rate	Size	Frame Rate	Bit Rate	Size	Frame Rate
28Mbps	1920x 1080	50.00P	Simultaneous recording not available		
24Mbps	1920x 1080	50.00P PF25.00	24Mbps	1920x 1080	50.00P PF25.00
17Mbps	1920x 1080	50.00P PF25.00	17Mbps	1280x 720	50.00P PF25.00
5Mbps	1440x 1080	50.00P PF25.00	5Mbps	1440x 1080	50.00P PF25.00

Versatility and control



Autofocus

XA25 and XA20 offer a range of autofocus options for different creative requirements. Instant AF provides super-fast, accurate focus, while alternative options such as Medium AF provide a more natural transition to new subjects.

Face recognition preferentially focuses on the subjects that matter most, and enables the Face Only AF mode. Face Only AF prevents unwanted focus changes even when your subject leaves the shot - ideal for interviews or more artistic compositions.

Touch AF lets you simply touch the screen to choose the main point of focus; the camcorder will use this information to select the optimal settings.



*Infrared
OFF*

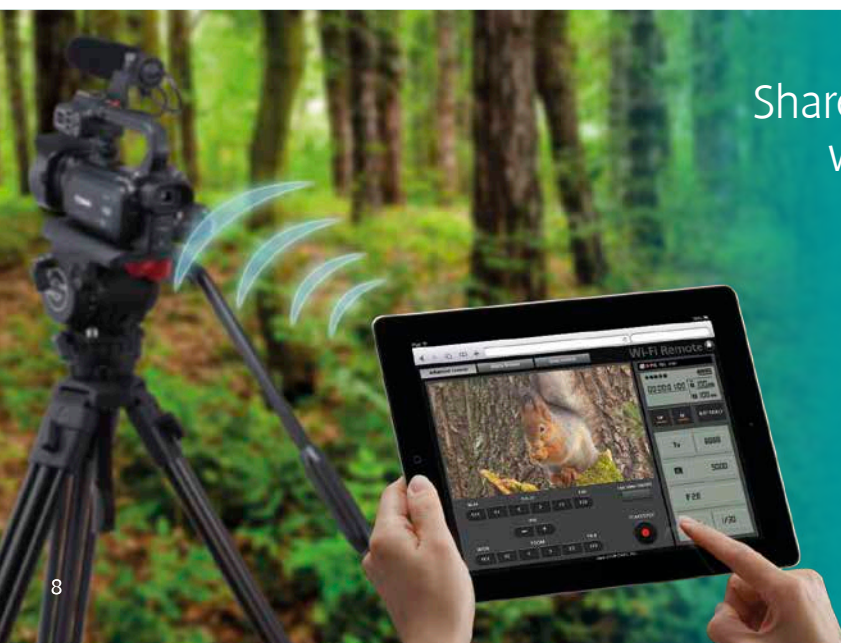


*Infrared
ON*

Infrared shooting

For any application at night or in low light conditions, infrared mode can be activated at the flick of a switch. An infrared lamp in the detachable handle uses a diffused LED to provide brightness throughout the entire image during infrared shooting, resulting in more natural looking video.

This lamp is 3x stronger than the one featured in the XA10 camcorder, providing more effective support for shooting in the dark.



Share footage wirelessly



Built-in Wi-Fi

The camcorder's built-in Wi-Fi allows wireless file transfer through a range of supported devices, or via FTP. Transfer footage using an iOS smartphone, tablet or other Wi-Fi-enabled device for direct upload via an app at up to 24 Mbps, or via FTP at up to 150 Mbps.

For scenarios that require the camera operator to be one step removed from the action, any supported Wi-Fi enabled mobile device can be used, via a web browser, to remotely control the camera. Many camera functions are supported including recording, aperture, zoom, focus and shooting mode selection.



GPS Receiver
GP-E2



GPS compatible

Location and time information captured during shooting can be included with each recorded file using an optional GPS accessory. This supports editing work and is useful for documentary, evidentiary or archiving purposes.



A choice of interfaces

The range offers an advanced selection of interfaces, with physical inputs conveniently grouped together and designed to keep connections in place during handheld use. The XA20 includes integrated HDMI, microphone, USB and headphone terminals, while the XA25 additionally features HD-SDI output - offering the high capacity, uncompressed connectivity useful for many broadcast applications.

5GHz & 2.4GHz Dual Band Wireless Support

CAMERA MODE

Wi-Fi Remote

This feature allows users to control the XA25 / XA20 remotely via a web browser using a smartphone or tablet PC.

FILE TRANSFER MODE

FTP Transfer

The ability to transfer video files to supported FTP servers and upload to the web.

PLAYBACK MODE

Movie Uploader v1.5

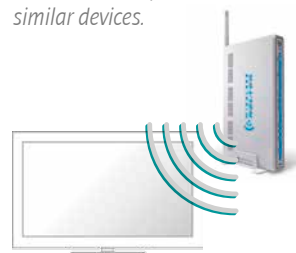
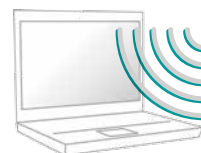
Videos stored in the camera can be uploaded to YouTube and Facebook using an iOS device.

Browser Playback

Playback camera videos via a web browser using a Notebook computer or tablet PC.

Media Server

Videos stored in the camera can be played and watched using a range of supported living room televisions, computers or similar devices.



The **XA25** and **XA20** camcorders combine outstanding image quality with dual-format recording and HD-SDI output in a compact form factor, making them ideal for professional broadcast and web-based content capture.

XA25
XA20



Ultra-compact Body

KEY FEATURES

26.8mm, f/1.8-2.8 wide-angle lens with 20x zoom, Dynamic OIS, Hi-UD glass and Canon EMD technology

1 x 1/2.84 type HD CMOS Pro sensor for outstanding dynamic range and low light performance

8.77cm, 1.23m dot OLED touchscreen panel provides improved contrast and colour reproduction

Shoot simultaneously in AVCHD and MP4 to 2x SD cards¹ thanks to DIGIC DV 4

Connect to a wider broadcast environment via HD-SDI (XA25 only)

0.61cm, 1.56m dot EVF with 45° tilt operation

Fast/slow motion MP4 recording

Built-in IR lamp for night shoots

Professional audio control, 2x XLR inputs

Built-in Wi-Fi for file transfer/remote operation; optional GPS

1 Canon HD Video Lens

A fast 26.8mm wide-angle lens with 20x optical zoom and Dynamic OIS delivers outstanding image quality.

2 Lens Ring Control

A switchable zoom/focus ring and iris control can be found at the front of the lens. The main zoom control is a rocker, positioned for easy access whether handheld or tripod-mounted.

3 Shooting Controls

Key shooting functions such as aperture, shutter speed, gain and exposure can be independently adjusted using the customisable control dial.

4 Electronic Viewfinder

The EVF boasts a resolution of 1.56 million dots and can be tilted up to approximately 45 degrees to allow different shooting positions.

5 OLED Screen

With a 1.23 million dot resolution, the OLED touch screen offers improved response times, definition, contrast and colour reproduction

6 Professional Audio

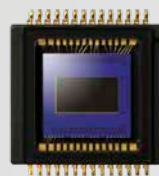
Two XLR terminals provide professional audio inputs, supporting high quality linear PCM recording in AVCHD 28 Mbps recording mode.

7 Infra-red Shooting Mode

Thanks to the infrared light source built into the handle, this camera is ideal for use at night or low ambient light conditions.

8 HD-SDI Connection (XA25 only)

An easily-accessible HD-SDI port allows connection to industry-standard broadcast equipment such as satellite transmission systems.



Canon Full-HD CMOS

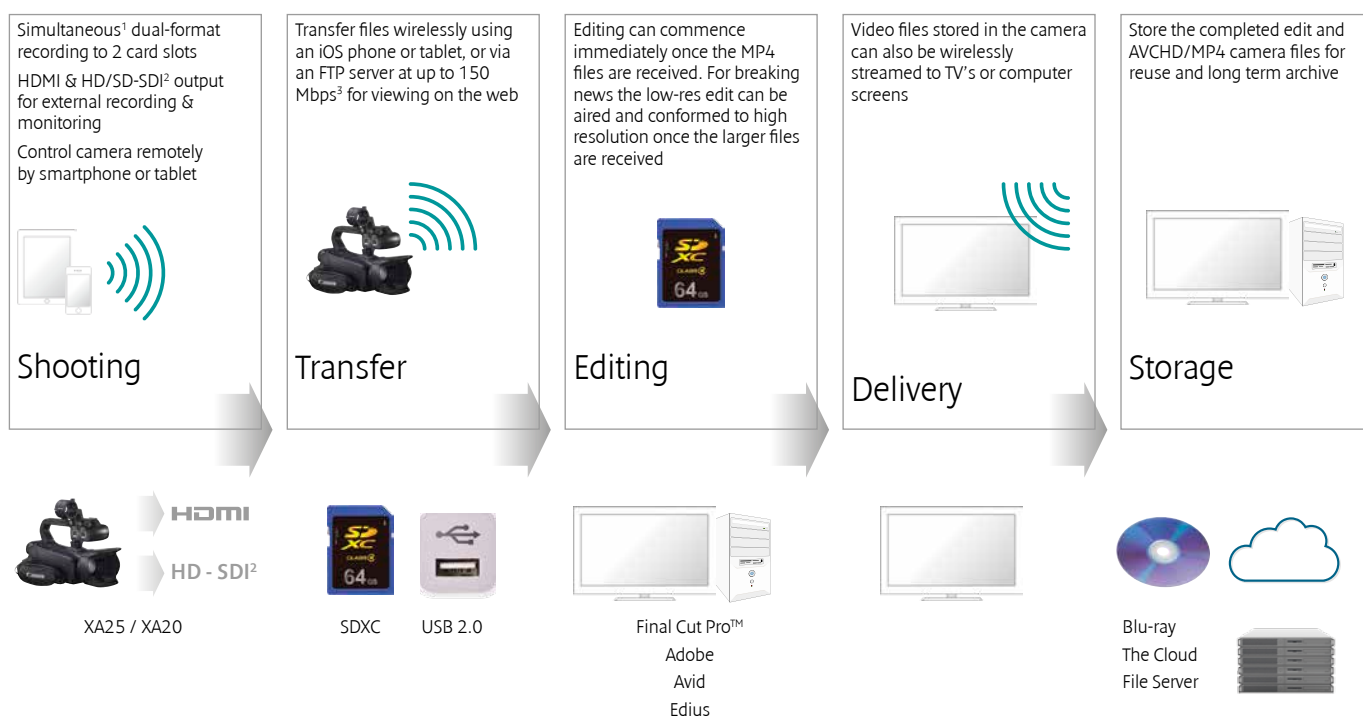
With an effective pixel count of approximately 2.91 Mp, the all-new 1/2.84 type HD CMOS Pro sensor provides outstanding dynamic range and low light performance.





The ultra-compact body of the XA25 and XA20, Canon's smallest professional camcorders.

Workflow



1. Simultaneous recording not available in 1080/50P recording modes
2. XA25 only
3. Wireless internet access point required for FTP file transfer

Canon Professional Services



Our European CPS programme is a completely free service that offers Canon professional photo and video users exclusive access to a range of benefits. These include access to CPS support at major events, a priority repair service, and local CPS support in selected European countries. Free back-up equipment loans during repair periods are also available, subject to availability.

For more information on Canon Professional Services and to apply for CPS Video membership please visit www.canon-europe.com/cps

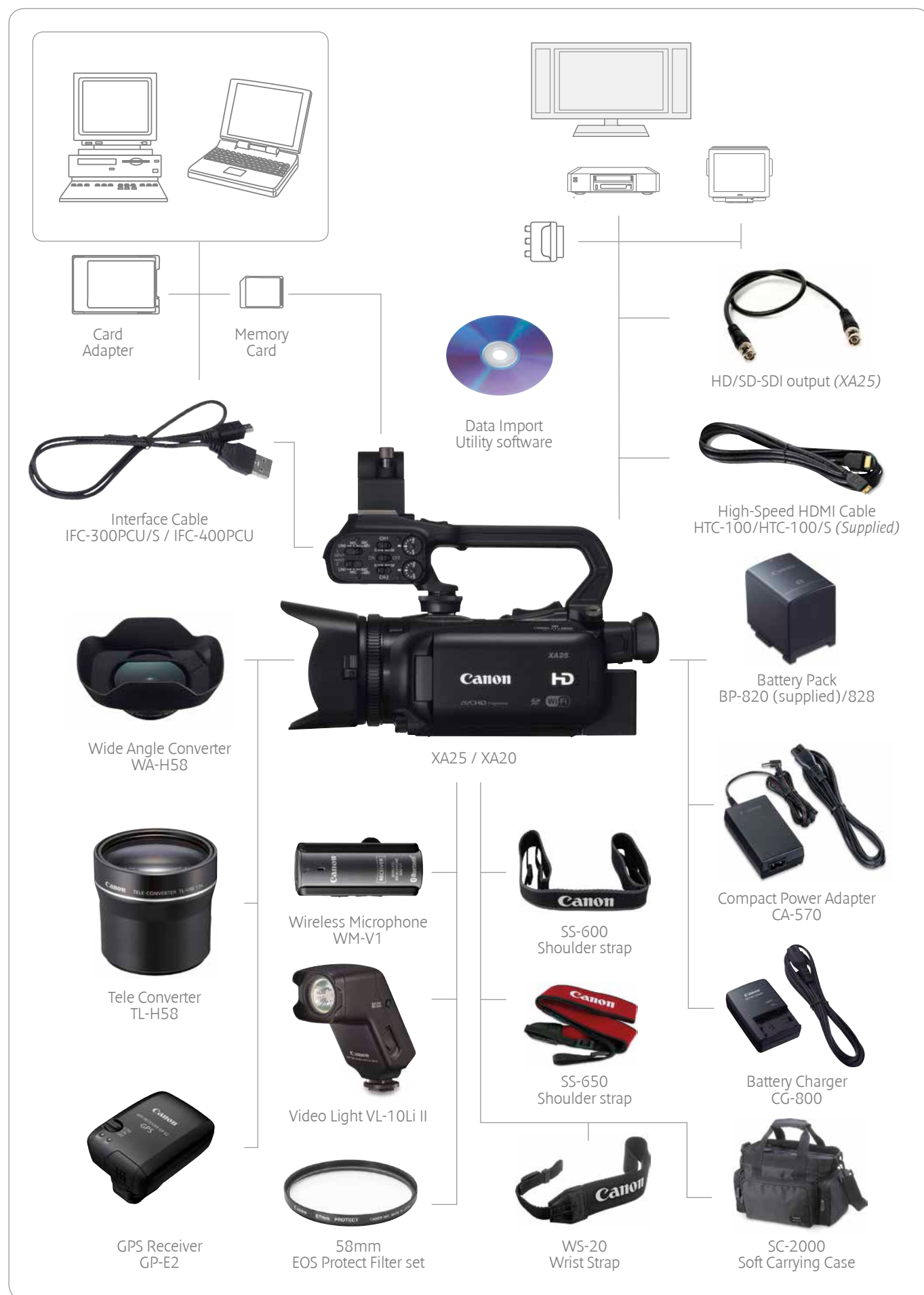
The Canon Range at a Glance Comparison

							
	XF305	XF300	XF105	XF100	XA25	XA20	XA10
Codec	MPEG2 MXF		MPEG2 MXF		AVCHD / MP4 (simultaneous dual format recording possible)		AVCHD
Video Resolution	1920x1080: 50i; 25p 1440x1080: 50i; 25p 1280x720: 50p; 25p		1920x1080: 50i; 25p 1440x1080: 50i; 25p 1280x720: 50p; 25p		1920x1080: 50p; 50i; PF25 (AVCHD) 1920x1080: 50p; 25p (MP4) 1280x720: 25p (MP4) 640x360; 25p (MP4)		1920x1080: 50i; PF25
Max Bitrate/Colour	50Mbps / 4:2:2		50Mbps / 4:2:2		AVCHD: 28Mbps / 4:2:0 MP4: 35Mbps / 4:2:0		24Mbps / 4:2:0
Recording Media	2x CompactFlash		2x CompactFlash		2x SDXC/SDHC		64GB built-in memory; 2x SDXC/SDHC
Lens	Canon L-series HD Video Lens 18x zoom, 29.3mm, f/1.6 3 rings: Lens, focus, iris		Canon HD Video Lens 10x zoom, 30.4mm, f/1.8 1 ring: Lens, focus, iris (switchable)		Canon HD Video Lens 20x zoom, 26.8mm, f/1.8 1 ring: Focus or zoom (switchable)		Canon HD Video Lens 10x zoom, 30.4mm, f/1.8 1 ring: Focus
Sensor	3x 1/3-type Canon HD CMOS Pro		1x 1/3-type Canon HD CMOS Pro		1x 1/2.84-type Canon HD CMOS PRO		1x 1/3-type Canon HD CMOS Pro
Processor	DIGIC DV III		DIGIC DV III		DIGIC DV 4		DIGIC DV III
Monitoring	10.3cm, 1.3m dot LCD; 1.3cm, 1.55m dot EVF		8.8cm, 0.92m dot LCD; 0.61cm, 0.26m dot EVF		8.8cm, 1.23m dot OLED; 0.61cm, 1.56m dot EVF		8.8cm, 0.92m dot LCD; 0.61cm, 0.26m dot EVF
Audio	2x XLR input; 2ch Linear PCM (16-bit, 48KHz)		2x XLR input; 3.5mm jack; 2ch Linear PCM (16-bit, 48KHz)		2x XLR input; 3.5mm jack; AVCHD: Linear PCM (2ch, 16 bit, 48 kHz)* / Dolby Digital (AC-3 2ch, 48kHz) MP4: MPEG-2 AAC LC (2 ch)		2x XLR input; 3.5mm jack; 2ch Dolby Digital (48KHz)
Variable Frame Rates	Slow & Fast Motion; Time Lapse; Stop Motion		Slow & Fast Motion; Time Lapse; Stop Motion		Slow/Fast Motion (MP4 mode only)		✗
Customisation	Custom Picture; Custom Function; Custom Display; 13 assignable buttons		Custom Picture; Custom Function; Custom Display; 10 assignable buttons		5 assignable buttons		2 assignable buttons
Additional Studio Connectivity	HD/SD-SDI output Time code input/output Genlock input	✗	HD/SD-SDI output Time code/Genlock terminal (switchable)	✗	HD/SD-SDI output	✗	✗
Built-in Wi-Fi	✗		✗		Remote Operation; Movie Uploader (YouTube and Facebook)**; Playback (in browser); Media Server; FTP File Transfer		✗
Infrared Mode	✗		✓		✓		✓
Weight (camera only)	2670g	2630g	1070g	1020g	Approx. 770g	Approx. 765g	775g

*AVCHD 28Mbps mode only

** iOS devices only, excludes MP4 1080/50P mode

Accessories & System chart



XA25 XA20

Specifications

IMAGE SENSOR	
Sensor	1/2.8-type HD CMOS Pro
System	Bayer pattern filter
Total pixels per sensor	Approx. 3.09 megapixels
Effective pixels per sensor	Approx. 2.91 megapixels (2136 x 1362)
Minimum illumination	Auto: 1.0 lux Slow Shutter: 0.1 lux
Horizontal Resolution	1000 TV lines or more (Full HD recording)
LENS	
Zoom ratio	20x
Focal length	26.8 - 576mm (35mm equivalent /28.8 - 576mm with Dynamic IS on)
Minimum focus distance	60cm (throughout zoom range); 10mm (wide angle)
ND filter	Built-in gradation filter (Auto or Off)
Zoom control	Zoom rockers on body and handle; Selectable manual zoom/focus ring on lens; Selectable High Speed and Soft Zoom modes available
Zoom speed	Variable (body rocker only) or Constant speed (body and handle rocker; Fast/Normal/Slow, 16 speed level settings in each)
Focus control	MANUAL: Lens ring, Touchscreen OLED (touch Focus, Touch and Track), Focus Preset AUTO: Face Priority AF/Face Only AF/Instant AF/Medium AF/TV AF
Iris control	Custom dial; Touchscreen; Auto
Aperture range	f1.8 - f8
Filter diameter	58mm
Lens elements/groups	12/10
Aperture blades	8 Blade Circular Aperture
Image stabilization system	Optical lens shift system (angle & vector movement detection) + electronic stabilisation; 4 modes: Intelligent (Auto), Dynamic, Standard, Powered
Digital zoom	Up to 400x; Built-in 2x Digital Teleconverter (cannot be used with Digital Zoom)
IMAGE PROCESSOR	
Type	DIGIC DV 4
RECORDING	
Video storage media	SDXC/SDHC/SD memory card (2 card slots); Dual Format recording, Double slot (simultaneous) recording and Relay (continuous) recording possible
Type	Class 6 (or higher) cards recommended for 1080/50P recording; Class 4 (or higher) cards recommended for other Full HD recording
Recording time	128GB SDXC card: 10hrs 10mins (AVCHD max. quality) ¹ 8hrs 00mins (MP4 max. quality) ¹ 91hrs 55mins (MP4 lowest quality) ¹
Recording file format	AVCHD Progressive (v2.0, high profile); MP4
Recording format	AVCHD (all modes variable bit rate, 4:2:0 colour sampling): 1920 x 1080: 50p (28Mbps, linear PCM audio available); 1920 x 1080: 50i/25p (24Mbps, 17Mbps); 1440 x 1080: 50i/25p (5Mbps) MP4 (all modes variable bit rate, 4:2:0 colour sampling): 1920 x 1080: 50p (35Mbps); 1920 x 1080: 25p (24Mbps, 17Mbps); 1280 x 720: 25p (4Mbps); 640 x 360: 25p (3Mbps)
Slow/Fast motion	YES (MP4 HD mode only, 2x fast motion, 0.5x slow motion)
Interval Record	NO
Frame Record	NO
Pre Record (cache record)	YES (3 seconds)
Scan Reverse	NO
HD>SD conversion	YES (AVCHD to MP4)
Internal Data Transfer	MOVIE & STILL: Yes (card to card)
Photo storage media	SDXC/SDHC/SD memory card
Still quality	During video recording or playback: 1920 x 1080/1280 x 720/640 x 360
MONITORING PANEL	
Type	Capacitive Organic LED
Size	8.8cm (3.5"), 100% view
Dots	1.23 million-dot equivalent
Image quality adjustments	Brightness, backlight, OLED colour balance
Adjustable	YES (270 degree rotation about horizontal axis)
Waveform Monitor	NO
Focus Assist	Peaking; Magnifying
Peaking	YES
Zebra	YES (70% or 100% reference level)
Markers	ON/OFF (Level, Grid)
EVF	
Size	0.61cm (0.24"), 100% view
Dots	1.56 million dots equivalent
Adjustable	YES (tiltable to 45 degrees)
Correction lens	+ 2.0 to -5.5 diopter
INPUTS/OUTPUTS	
Audio in	XLR inputs with 48V phantom power (x2), 3.5mm microphone input jack
Headphone output	3.5mm stereo jack
HDMI	YES (HDMI™ mini connector, output only, 1080/50p output possible)
USB	YES (Mini-B, USB 2.0 Hi-Speed, output only)
HD/SD-SDI output	YES (576i, 720P or 1080i, output only, embedded audio and time code)
XA25 XA20	NO
Time code	YES (Embedded in SDI output; superimposed on HDMI Output signal)
AV terminal	3.5mm mini jack (output only for video and audio)
DC input	YES
Remote Control Terminal	2.5mm mini jack
Colour Bars	YES (SMPTE or EBU), with 1KHz Tone

EXPOSURE	
Exposure metering	Centre-weighted average or segment evaluative (determined by shooting mode); No metering: Fireworks mode, Fixed exposure (1/50 sec.)
Exposure compensation	-3 to +3 EV (12 steps); Backlight Correction available (Auto or always on)
Auto Exposure mode	Smart Auto, Face Detection AE; Manual control via Touch Exposure and Exposure Compensation functions
Push Auto Iris	YES (via touchscreen)
Exposure Lock	YES
Auto Gain Control setting	Auto/Manual
Auto Gain Control limit	0 to 24dB, 1dB increments (0 to 18dB in Cinema Mode)
Gain setting	0 to 24dB, 1dB increments (0 to 18dB in Cinema Mode)
SHUTTER SPEED	
Control Modes	Full Auto/Manual control (touchscreen LCD or control dial)
Shutter Speed	1/6 to 1/2000 (depending on Scene Mode and frame rate)
Clear scan	NO
INFRARED	
Infrared shooting mode	YES (green or white)
Built-in IR lamp	YES, in detachable handle
SHOOTING MODES	
Smart AUTO	YES
Program AE	AUTO; M mode: P, Tv, Av, M (manual exposure), SCN (Portrait, Sports, Snow, Beach, Sunset, Night, Low Light, Spotlight, Fireworks); Cinema mode: P, Tv, Av, M
Cinema Features	Cinema-Look Filter (9 options, including customisable 'Cinema Standard')
Image Effects	Brightness, Contrast, Sharpness, Colour Depth
WI-FI & GPS SPECIFICATIONS	
Wireless LAN standards	IEEE 802.11b/g/n (2.4GHz band)/IEEE 802.11a/n (5GHz band) ²
Supported Wi-Fi Functions	Remote Operation; Movie Uploader (YouTube and Facebook) ³ ; Playback (in browser); Media Server; FTP File Transfer
Supported Browser for Remote Operation	Internet Explorer 8 or later, Safari (iOS), Safari (MacOS), Android standard browser
Remote Operation Control Features	Aperture, Focus, WB, shutter Speed, Gain, Exposure Compensation, Shooting Mode, Slot select, Start/Stop Recording
Live view image Resolution	Camera setting mode: 680 x 383; Simplified setting: 284 x 160
GPS Information (Optional Accessory)	Latitude/Longitude/Elevation, Coordinated Universal Time (UTC)
WHITE BALANCE	
Auto	YES
Present	6: Daylight, Shade, Cloudy, Tungsten (incandescent lamps or halogen bulbs), Fluorescent H (3-wavelength type fluorescent), Fluorescent (white fluorescent)
Manual setting	Set 1, Set 2, Colour Temperature (2,000-15,000K, 100K steps)
TIME CODE	
Countup system	Regen/Rec Run/Free Run/Presets (Non-Drop Frame)
Start value setting	"00:00:00:00", Set/Reset selectable
AUDIO	
Recording	AVCHD: Linear PCM ⁴ (2ch, 16 bit, 48 kHz) or Dolby Digital (AC-3 2ch, 48kHz) MP4: MPEG-2 AAC LC (2 ch)
Control	Audio controls include: Independent 2ch Line/Mic/Mic+48V input; Independent level control per channel (= to +18 dB); Independent audio limiters (2 ch); Input mic trimming
Microphone attenuation	Auto/On/Off (20dB)
Microphone level meter	YES
Zoom Microphone	YES (customisable frequency response and directivity)
ACCESSORIES	
Supplied	Lens hood with barrier, Mic holder unit, Handle unit (HDU-1), Wireless Controller (WL-D69), Battery Pack BP-820, High Speed HDMI Cable (HTC100/S), Compact Power unit CA-570, AC Cable, Interface Cable (IFC-300PCU/S), Stereo Video Cable (STV-250N), Data Import Utility Ver2.0
Optional	Canon Battery Pack BP-820/BP-828, Canon Compact Power Adapter CA-570, Canon Battery Charger CG-800E/CG-800B, Canon HDMI cable HTC-100, Canon Stereo Video Cable STV-250N, Canon Tele Converter TL-H58, Canon Wide Attachment WA-H58, Canon Wireless Microphone WM-V1, Canon Soft Carrying Case SC-2000, Canon PROTECT Filter 58 mm, Canon ND4-L Filter 58 mm, Canon ND8-L Filter 58 mm, Canon GPS Receiver GP-E2, Canon Battery Video Light VL-10Li/VL-10LiLi (Model A/B only), Canon Battery Pack BP-900 series (for VL-10Li/VL-10LiLi), Canon Compact Power Adapter CA-910/920/930 (for charging BP-900 series)
BATTERY	
Backup power supply	Lithium coin battery (built-in)
Power Consumption	4.9W ⁵ (AVCHD) / 4.8W (MP4) ⁵
Continuous Recording Time	
XA25	Supplied BP-820: Approx. 145 minutes ⁵ Optional BP-828: Approx. 220 minutes ⁵
XA20	Supplied BP-820: Approx. 150 minutes ⁵ Optional BP-828: Approx. 225 minutes ⁵
MISCELLANEOUS	
Dimensions	Approx. 109 x 84 x 182 mm (main body only) Approx. 131 x 180 x 231 mm (fully equipped)
Detachable handle	YES
Weight (camera only)	
XA25	Approx. 770g
XA20	Approx. 765g
Weight (fully equipped)	
XA25	Approx. 1,160g
XA20	Approx. 1,155g
Operating temperature range	-5°C to +45°C, 60% relative humidity

¹ After 12 hours of continuous recording, camcorder will stop recording and re-start automatically Simultaneous/Dual Format recording not available in 1080/50P modes

² 5GHz not available in Qatar

³ iOS devices only, excludes MP4 1080/50P mode

⁴ AVCHD 1080/50P mode only

⁵ 28Mbps / 35Mbps recording, normal EVF brightness

All specifications are subject to change without notice

✓ Class-leading compact
professional camcorders,
with outstanding image
quality and versatility.

Canon

Canon Inc.
canon.com

Canon Europe
canon-europe.com

English Edition 0150W716
© Canon Europa N.V., 2013

Canon Europe Ltd
3 The Square, Stockley Park
Uxbridge, Middlesex
UB11 1ET UK