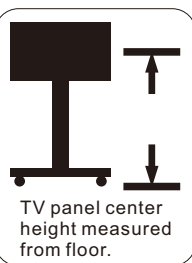
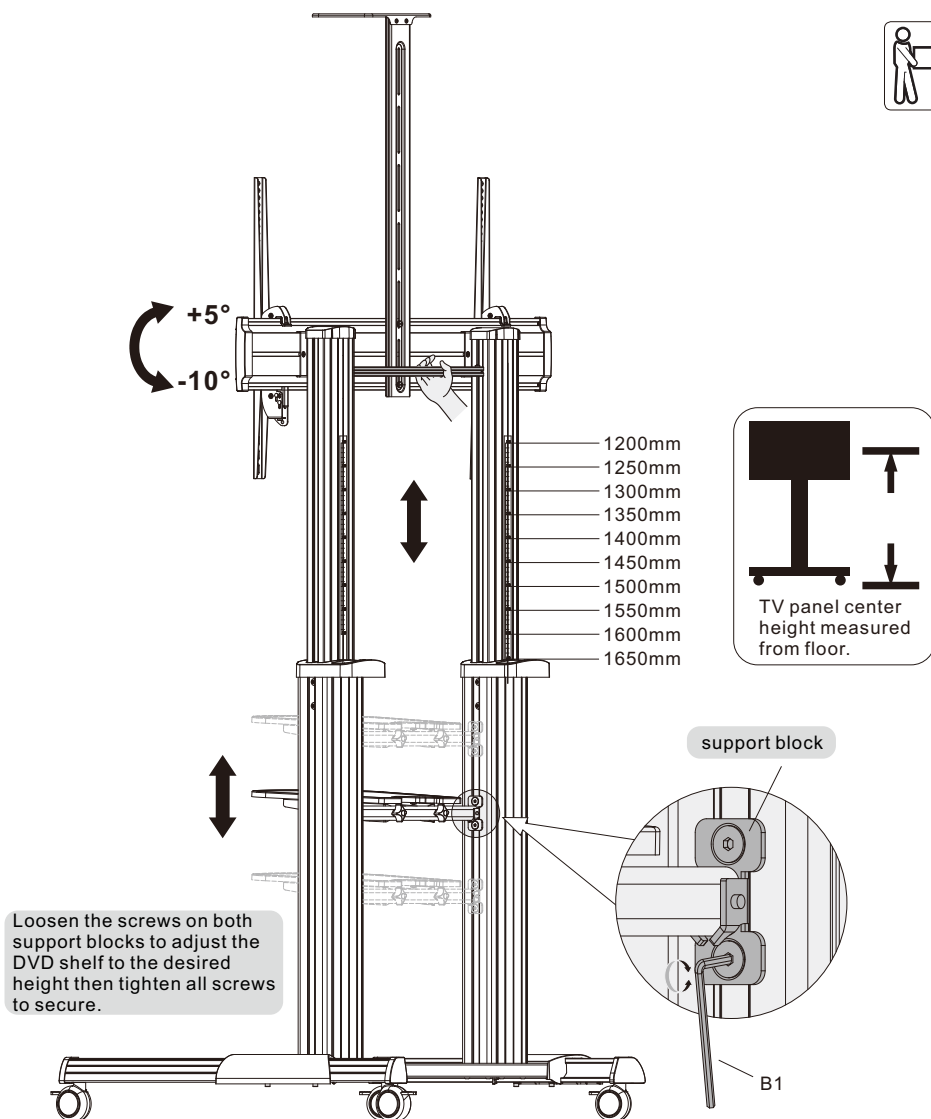


9. Adjustment

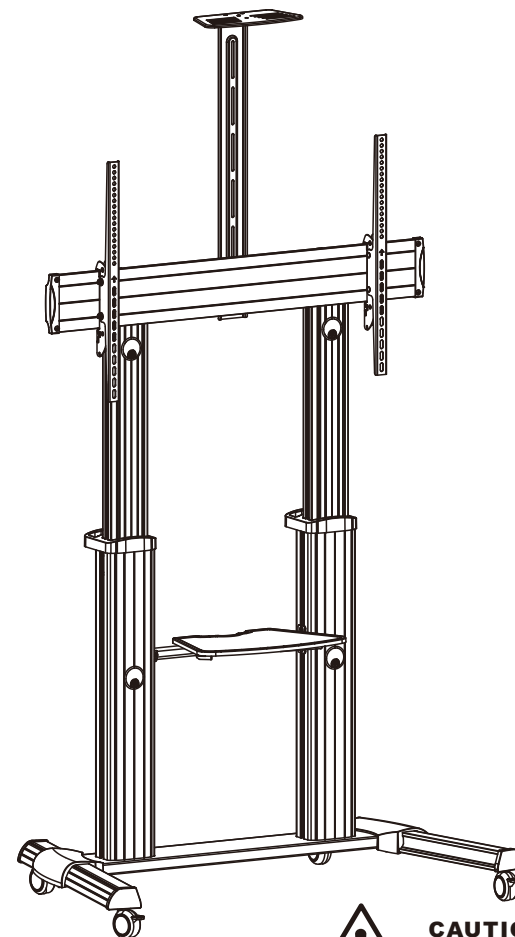


Maintenance

- Check that the bracket is secure and safe to use at regular intervals(at least every three months).
- Please contact your distributor if you have any questions.

INSTALLATION MANUAL

TV Floor Cart and Accessories



CAUTION: DO NOT EXCEED
RATED LISTED WEIGHT. SERIOUS
INJURY OR PROPERTY DAMAGE
MAY OCCUR!

S22



200x200
300x300
400x200
400x400
600x400
800x400
800x600
1000x600



ISSUED: NOV. 2015

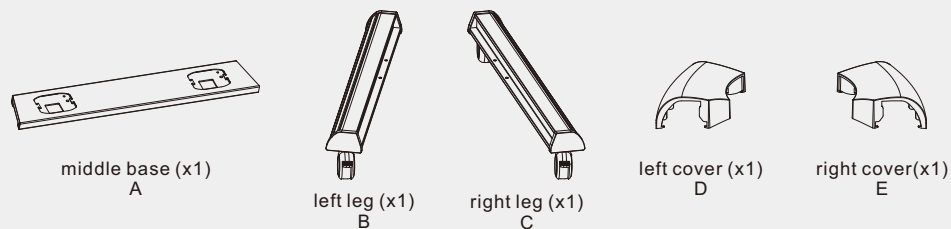
NOTE: Read the entire instruction manual before you start installation and assembly.

⚠ WARNING

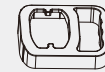
- Do not begin the installation until you have read and understood all the instructions and warnings contained in this installation sheet. If you have any questions regarding any of the instructions or warnings, please contact your local distributor.
- This mounting bracket was designed to be installed and utilised **ONLY** as specified in this manual. Improper installation of this product may cause damage or serious injury.
- Always use an assistant or mechanical lifting equipment to safely lift and position the equipment.
- Tighten screws firmly, but do not over tighten. Over tightening can cause damage to the items, This greatly reduces their holding power.
- This product is intended for indoor use only. Using this product outdoors could lead to product failure and personal injury.

IMPORTANT: Ensure that you have received all parts according to the component checklist prior to installation. If any parts are missing or faulty, telephone your local distributor for a replacement.

TTL04-610TW



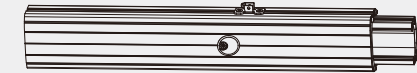
universal plate (x1)
F



plastic handle (x2)
G



left column (x1)
H



right column (x1)
I



left adapter bracket (x1)
J



right adapter bracket (x1)
K



top cover (x2)
L



DVD shelf (x1)
M



connecting plate (x1)
N



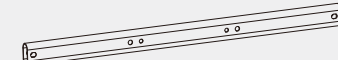
camera shelf (x1)
O



fastener (x2)
P



cross bar (x1)
Q



support bar (x1)
R



knob (x2)
S



M6x16 (x4)
T



M4x6 (x3)
U



M4x6 (x2)
V



M5x6 (x2)
W



M6x25 (x2)
X



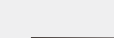
M6x14 (x6)
Y



M8x25 (x8)
Z



M6x25 (x2)
A1



Allen key (x1)
B1



wrench (x1)
C1

Package M



M5x14 (x4)
M-A



M6x14 (x4)
M-B



M8x20 (x4)
M-C



M6x30 (x4)
M-D



M8x30 (x4)
M-E



washer (x4)
M-F

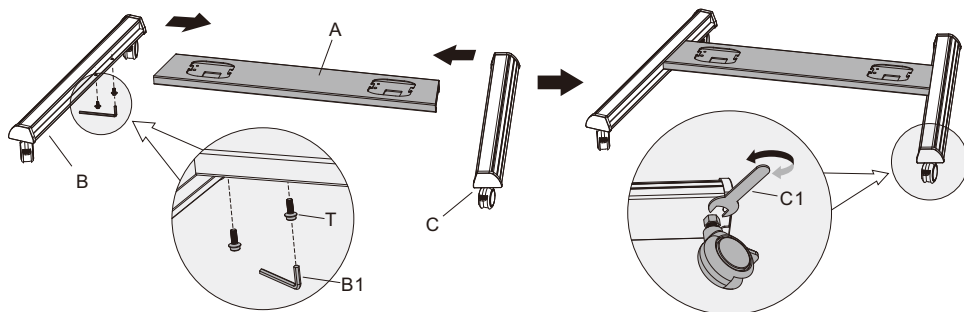


small spacer (x8)
M-G



big spacer (x4)
M-H

1. Assembling the Base

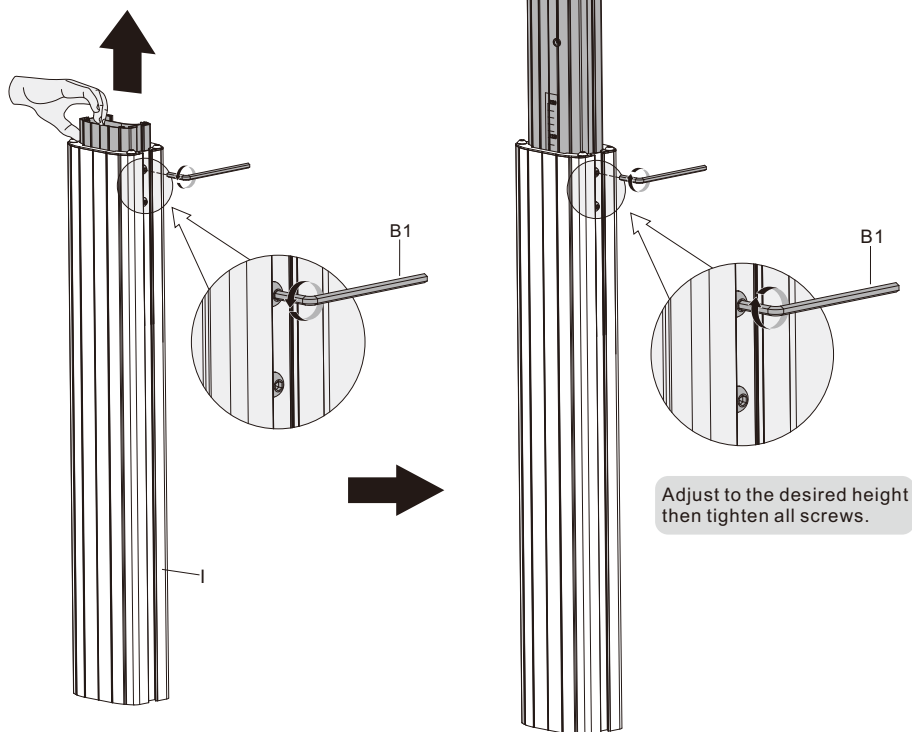


- Insert the right leg into the base. Align the holes in the right leg to the holes in the base. Secure with the screws. Repeat this step for the left leg.
- Each castor can be adjusted independently for fine tuning adjustments. Slightly turn the nut to lower or raise the base.

2. Attaching the Column to the Base



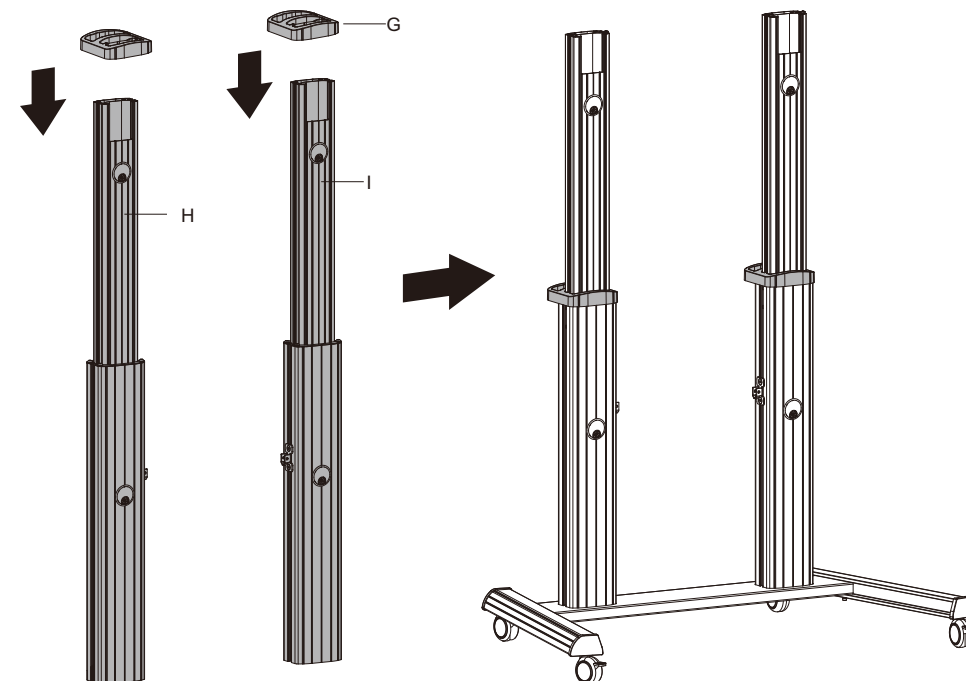
CAUTION: Please hold the inner column when loosening the screws to adjust height.



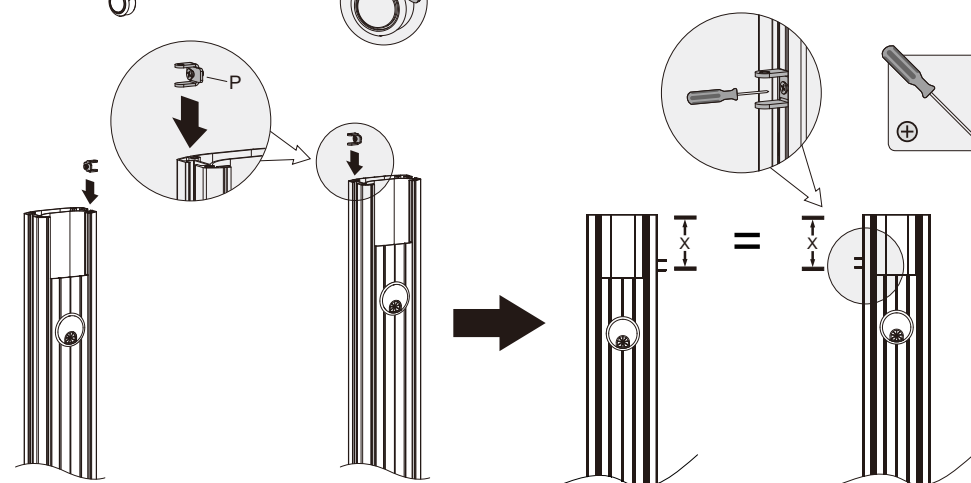
Adjust to the desired height then tighten all screws.

Repeat this step for the left column.

Note: Make sure both columns are at the same height using the height indicator as guide.

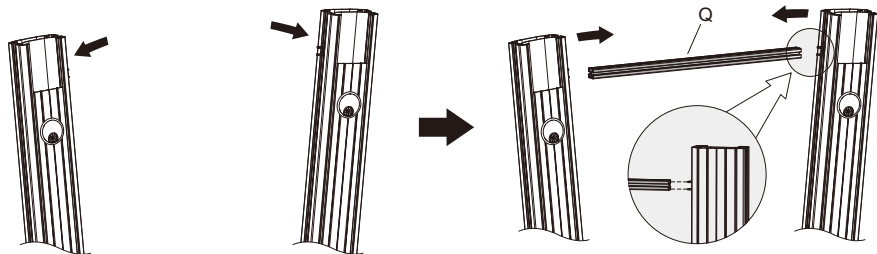


Note: Now the columns are attached to the base without the use of any screws. Be careful not to knock the columns over.

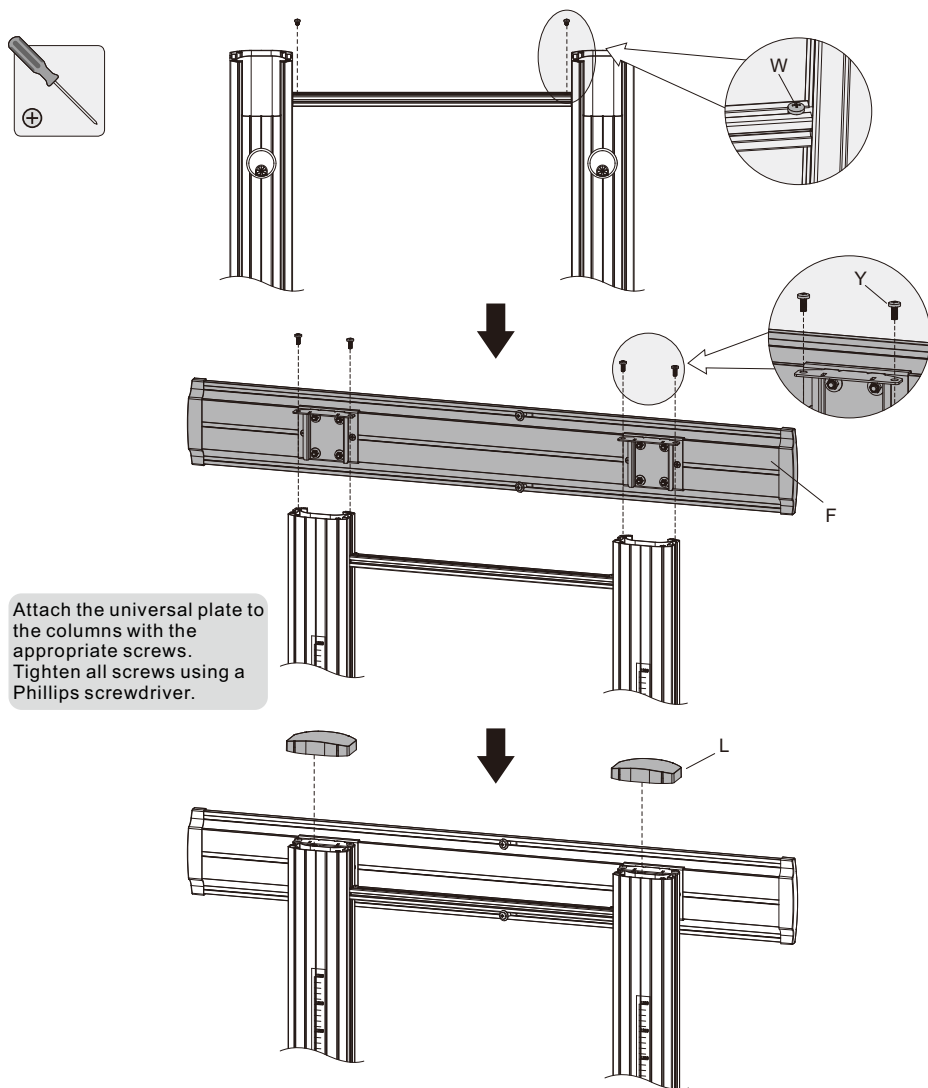


Insert the fasteners into the column rails.

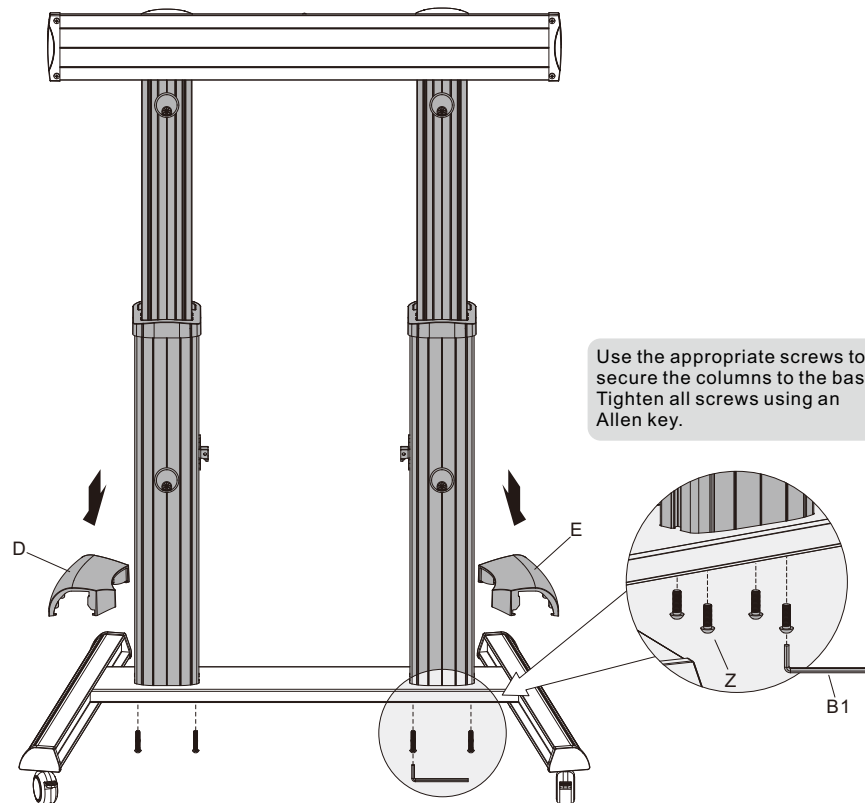
Note: Make sure both fasteners are at the same height, then tighten screws on the fasteners to secure.



Attach the cross bar to the fasteners with the appropriate screws and tighten all screws using a Phillips screwdriver.

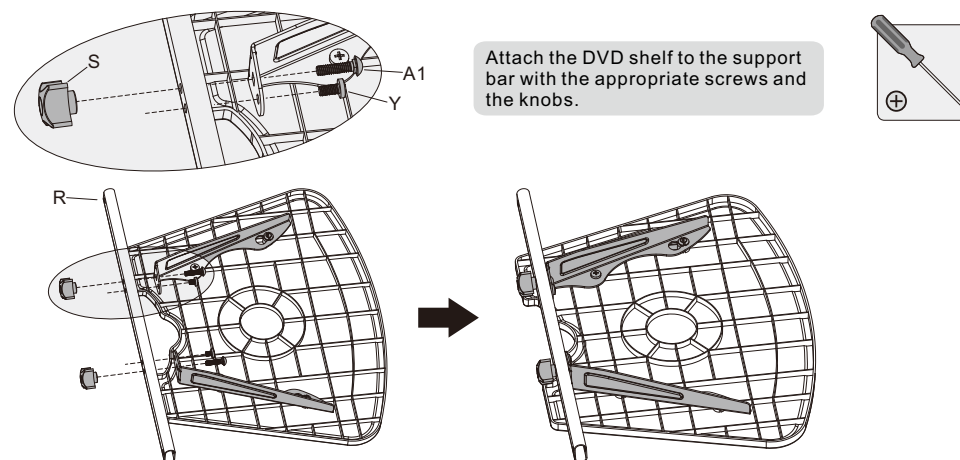


Attach the universal plate to the columns with the appropriate screws. Tighten all screws using a Phillips screwdriver.

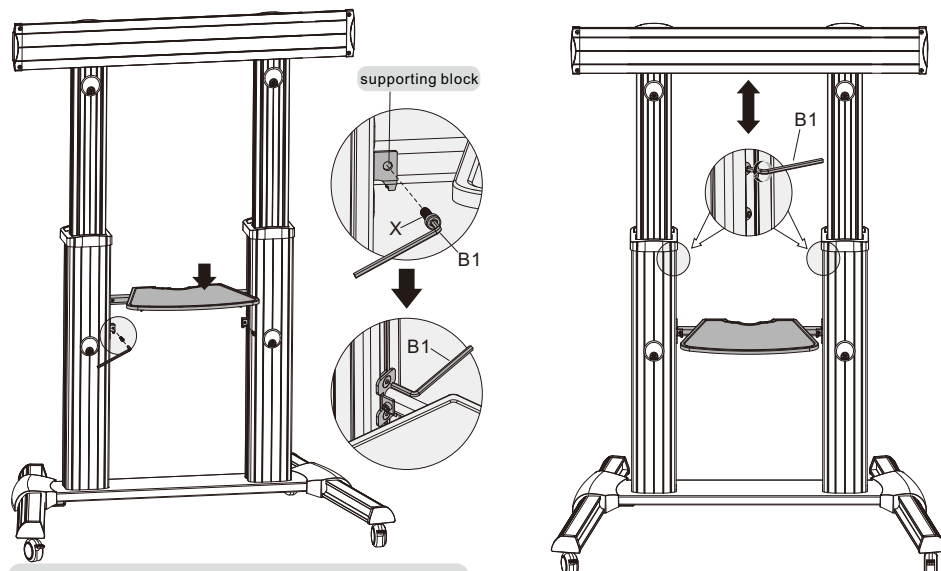


Use the appropriate screws to secure the columns to the base. Tighten all screws using an Allen key.

3. Assembling the DVD Shelf



Attach the DVD shelf to the support bar with the appropriate screws and the knobs.

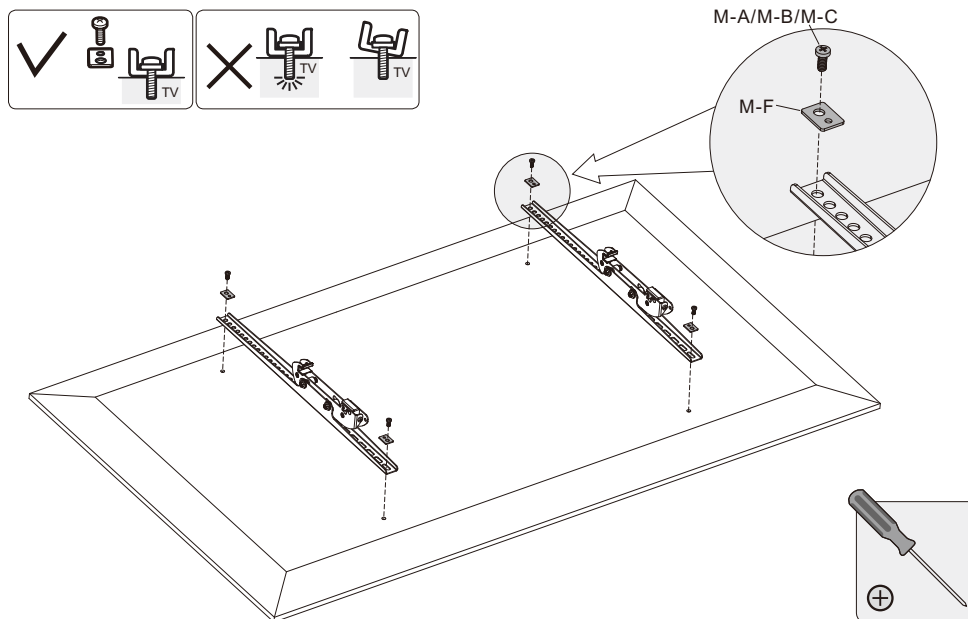


Attach the support bar (attached the DVD shelf) to the supporting blocks with the appropriate screws. Tighten all screws using an Allen key.

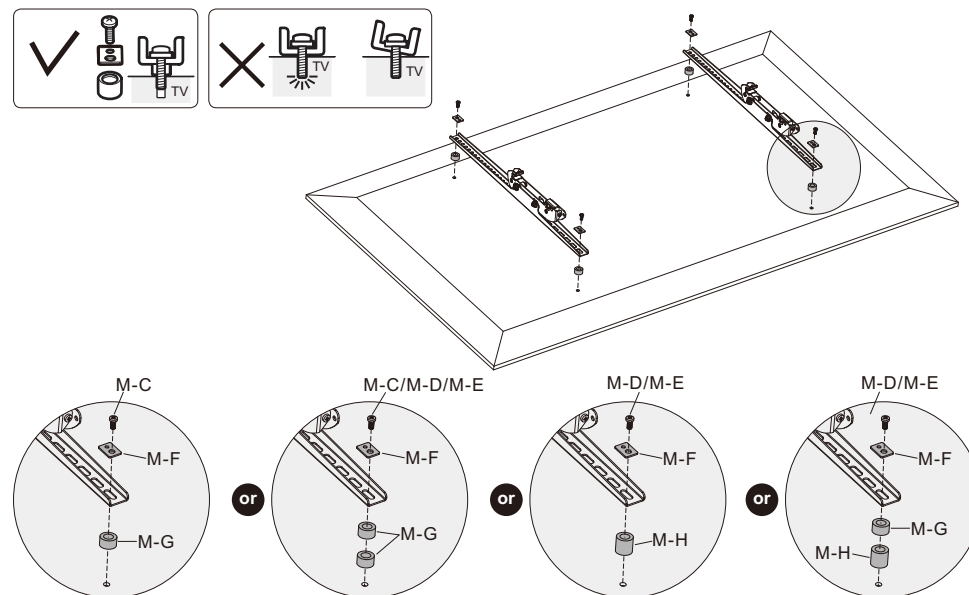
Please adjust the columns assembly to the desired height before installing the display.

4. Installing the Adapter Brackets

4-1 For Flat Back Screens



4-2 For Recessed Back Screens or to Access A/V Inputs

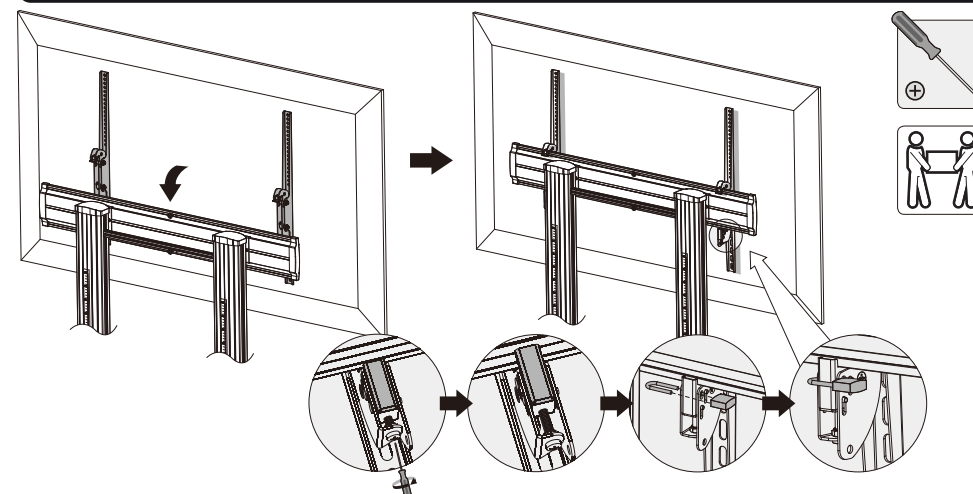


Note: Choose the appropriate screws, washers and spacers (if necessary) according to the type of screen.

- Position the adapter brackets as close as possible to the center of the display.
- Screw the adapter brackets onto the display.

⚠ Tighten all screws but do not over tighten.

5. Hanging the Display onto the Universal Plate



Hook the adapter brackets (attached the display) onto the universal plate.

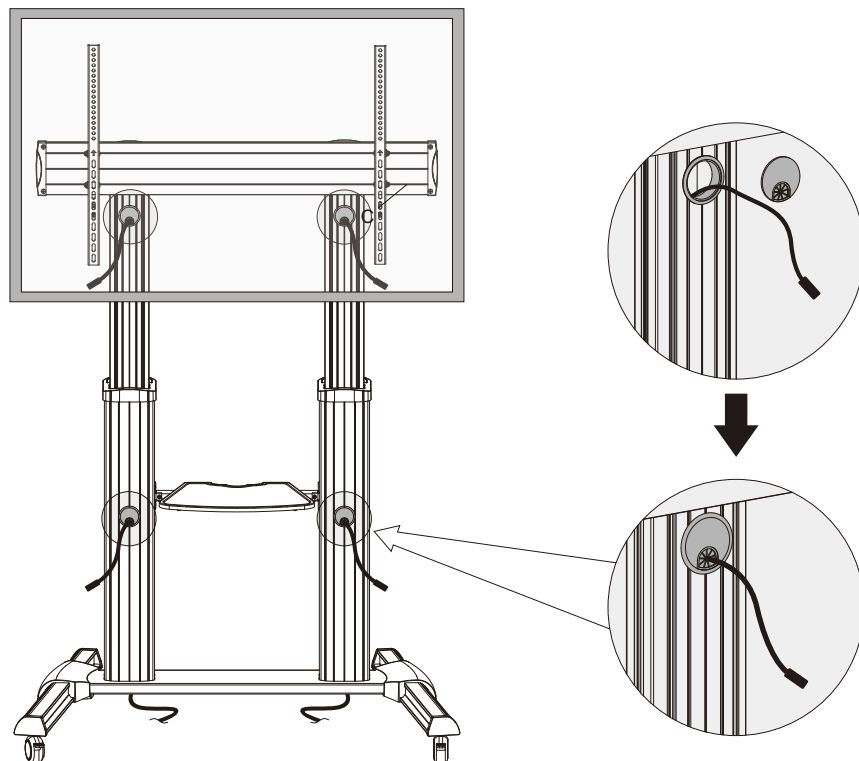
Rotate the bottom screws counterclockwise to lock.

Rotate the bottom screws clockwise to unlock.

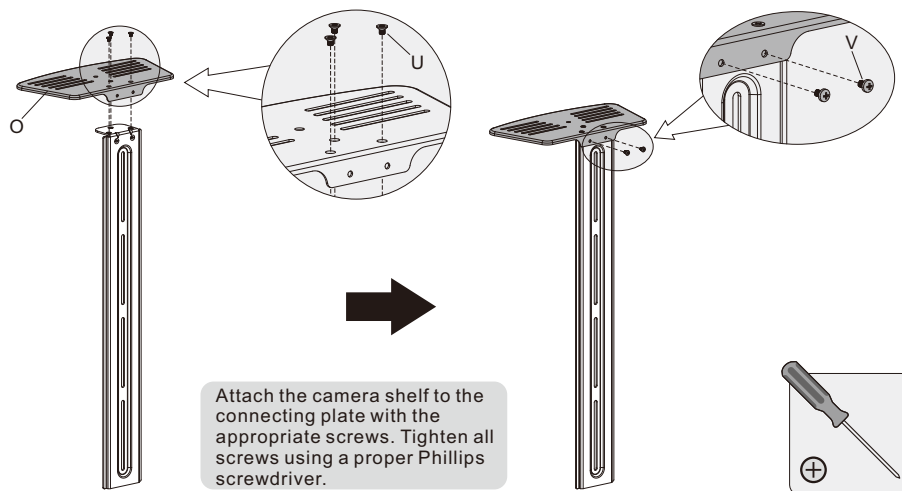
Use the padlock to prevent display from being stolen. (Padlock is not included.)

IMPORTANT: Make sure the display is correctly mounted before releasing the display.

6. Cable Management



7. Installing the Camera Shelf



8. Installing the Connecting Plate

