

- Deliver interactive brand experiences
- Multi-touch performance with “Built for Touch” reliability
- Thin, commercial-grade touchscreen ideal for kiosks, wayfinding and other office applications
- Optional plug in Intel Core i3/i5 processors running Microsoft Windows



3201L 32” Interactive Digital Signage (IDS) Touch Display

Elo’s 3201L 32-inch interactive digital signage touchscreen delivers a professional-grade large format display in a slim, integrated package. Designed from the bottom up for retail, hospitality, healthcare and other commercial markets, the Elo IDS is a high-quality, interactive canvas for attracting and engaging consumers. The 3201L offers system integrators and value-added resellers (VARs) a high performance solution that is easy to deploy and maintain in public environments. With a total thickness of 2.8 inches (72 mm), the 3201L is compliant with the ADA and IBC requirements of less than 4-inch protrusion for wall-mounted products when used with a compatible wall-mount.

Available with a choice of two multi-touch touchscreen technologies, zero-bezel Projected Capacitive (PCAP) or IntelliTouch Plus® surface acoustic wave. The PCAP touchscreen offers a fast and sensitive response with Microsoft® Windows® 7 and Windows 8 operating systems compatible with up to 10 touches recognized simultaneously.

IntelliTouch Plus surface acoustic wave multi-touch, display clarity is undistorted due to use of clear glass. Tilt mounts are available for easy cable access. State of the art HD display technology is utilized including a high contrast/brightness LED-backlit LCD panel, extended color gamut with movie/ gaming/ photo modes, black level adjustment, and on-screen menu enhancements.

Optional, high performance computer modules are available which turn the 3201L into a completely integrated all-in-one computer—without the need for any cables or additional mounting hardware. Computer modules are available in a choice of two models: ECMG2-i3 based on a 3.3GHz Intel® Core i3 processor and HD2500 graphics; and ECMG2-i5 based on a 3.6GHz Intel Core i5 processor and HD4000 graphics. The computer modules make the 3201L a reliable platform that is interoperable with most content management servers and supports optimal partitioning of locally cached and network streamed content.



Benefits:

- Professional-grade hardware with strengthened touchscreen glass to withstand the rigors of public use
- Thin (<4” mounted) design is attractive and compliant with ADA and IBC protrusion requirements
- Reliable, integrated IDS solution with optional NFC / RFID scanners and webcam kits
- 3 year standard warranty with optional 2 year extended warranty. On-site advance replacement exchange option available in USA
- Remote management capability for device hardware with support for future cloud applications
- Intel OPS compliant with available adapter kit
- Flexible mounting in portrait, landscape and table-top orientation

About Elo

Elo founders pioneered the touchscreen over 40 years ago. Today, Elo Touch Solutions is a leading global supplier of touch-enabled technology, products and industry solutions. The Elo portfolio encompasses the broadest selection of OEM touchscreen components, touchmonitors, and all-in-one touchcomputers for the demanding requirements of diverse markets, including gaming machines, hospitality systems, industrial automation, interactive kiosks, healthcare, office equipment, point of sale terminals, retail displays, and transportation applications. The Elo touch experience has consistently stood for quality, reliability and innovation with over 20 million installations worldwide.

3201L 32" Interactive Digital Signage (IDS) Touch Display

Specifications	
Model	3201L
Form Factor	Digital Signage
Bezel Color	Black
Active Display Area (W x H)	27.5" x 15.5" (698 mm x 393 mm)
Dimensions* (W x D x H)	IntelliTouch Plus Model: 30.0" x 3.1" x 18.0" (762mm x 78mm x 457 mm) Projected Capacitive Model: 31.1" x 2.8" x 19.0" (790mm x 72 mm x 484 mm)
LCD Technology	Active matrix TFT LCD with LED backlight
Mounting Options*	VESA 4-hole mount per MIS-F, 400, 400, 6MM
Display Technology	Full HD 1920 x 1080 (native) active matrix TFT LCD with LED backlight. Other resolutions supported
Aspect Ratio	16:9
Number of Colors	16.7 million
Brightness (typical)	LCD Panel 350 nits; with IntelliTouch Plus 315 nits; with Projected Capacitive 301 nits
Response Time (Tr + Tf) (typical)	8 ms
Viewing Angle (typical)	Horizontal: ±89°; Vertical: ±89°
Contrast Ratio (typical)	3000:1
Video Inputs	Video Analog VGA on Female DE-15 connector; HDCP-capable HDMI 1.3 on Type A connector; DisplayPort 1.1a connector; Input Video Horizontal Sync frequency range: 60-73KHz; Input Video Vertical Sync (frame rate) frequency range: 47-63Hz
Power	Input power connector: IEC 60320 C14; Input power signal specifications: 100-240VAC 50/60Hz With IntelliTouch Plus: - Monitor Only Power Consumption (typical at 110V at 60Hz): ON: 57 W; SLEEP: 11 W; OFF: 1 W - Monitor Only Power Consumption (typical at 230V at 50Hz): ON: 56 W; SLEEP: 10 W; OFF: 2 W With Projected Capacitive: - Monitor Only Power Consumption (Typical at 110V at 60Hz): ON: 64 W; SLEEP: 9 W; OFF: 1.5 W - Monitor Only Power Consumption (Typical at 230V at 50Hz): ON: 65 W; SLEEP: 9 W; OFF: 1.5 W
Audio	Internal Speakers: 4 x 5W stereo speakers; Input audio connector: 3.5mm TRS jack; Input audio signal range: 1Vrms max stereo signal (standard PC line out); Headphone output connector: 3.5mm TRS jack
Weight	IntelliTouch Plus Model: Unpackaged —with ECMG2: 35.3 lbs (16.0 kg); without ECMG2: 29.8 lbs (13.5kg) Packaged: with ECMG2: 50.9 lbs (23.1 kg); without ECMG2: 45.4 lbs (20.6 kg) Projected Capacitive Model: Unpackaged —with ECMG2: 36.4 lbs (16.5 kg); without ECMG2: 33 lbs (14.8kg) Packaged: with ECMG2: 46.5 lbs (21.1 kg); without ECMG2: 43.3 lbs (19.4 kg)
Shipping Dimensions	Width: 34.5" (885 mm); Height: 23.4" (595 mm); Depth: 7.9" (200 mm)
Temperature	Operating: 32°F to 104°F (0°C to 40°C); Storage: -4°F to 140°F (-20°C to 50°C)
Humidity (non-condensing)	Operating: 20%-80%; Storage: 10%-95%
Regulatory Approvals and Declarations	UL, FCC; cUL, IC; CB; CE; VCCI; C-Tick; NOM CoC; GOST; BSMI; KC, e-Standby; CCC, China RoHS; with RFID: UL, FCC; CE
Accessories	NFC Adapter (E603158), OPS Kit (E102270), OSD Control Box (E483757) Replacement Cable Kit (E000263), Stand (E455084), Wall Mount Kit (E750497), Webcam (E828885)
Warranty	3 years standard. On-site exchange (U.S. only) and extended warranty available
MTBF	50,000 hours demonstrated

*See dimensional drawings for details

Ordering Information

Model	Part Number	Technology	Color
3201L	E415988	IntelliTouch Plus	Black
	E739717	Projected Capacitive	Black

Optional Computer Modules

Model	Part Number	Processor	RAM	HDD	OS
ECMG2-i3	E776797	Intel Core i3 3.3GHz HD2500	2GB	320GB	No OS
	E487570	Intel Core i3 3.3GHz HD2500	2GB	320GB	Windows 7
ECMG2-i5	E272400	Intel Core i5 3.6GHz HD4000	4GB	320GB	No OS
	E584199	Intel Core i5 3.6GHz HD4000	4GB	320GB	Windows 7

To find out more about our extensive range of Elo touch solutions, go to www.elotouch.com, or call the office nearest you.

North America

Elo Touch Solutions
1033 McCarthy Boulevard
Milpitas, CA 95035

800-ELO-TOUCH

Tel +1 408 597 8000

Fax +1 408 597 8001

customerservice@elotouch.com

Europe

Tel +32 (0)16 70 45 00

Fax +32 (0)16 70 45 49

elosales@elotouch.com

Asia-Pacific

Tel +86 (21) 3329 1385

Fax +86 (21) 3329 1400

www.elotouch.com.cn

Latin America

Tel 786-923-0251

Fax 305-931-0124

www.elotouch.com

Elo Touch Solutions, Inc. reserves the right to change or update, without notice, any information contained herein; to change, without notice, the design, construction, materials, processing or specifications of any products; and to discontinue or limit production or distribution of any products. Elo (logo) and Elo Touch Solutions are trademarks of Elo Touch Solutions, Inc. Copyright 2013 Elo Touch Solutions, Inc. All rights reserved. DS000071, rev E 12/13



- Deliver interactive brand experiences
- Six-touch performance with “Built for Touch” reliability
- Thin, commercial-grade touch screen ideal for kiosks, wayfinding and other office applications
- Integrated Intel Core i3/i5 processors running Microsoft Windows



4201L 42” Interactive Digital Signage (IDS) Touch Display

Elo's 4201L 42-inch interactive digital signage touch screen delivers a professional-grade large format display in a slim, integrated package. Designed from the bottom up for retail, hospitality, healthcare and other commercial markets, the Elo IDS is a high-quality, interactive canvas for attracting and engaging consumers. The 4201L offers system integrators and value-added resellers (VARs) a high performance solution that is easy to deploy and maintain in public environments. With a total thickness of 3.2 inches (81 mm), the 4201L is compliant with the ADA and IBC requirements of less than 4-inch protrusion for wall-mounted products when used with a compatible wall-mount.

Available with IntelliTouch® surface acoustic wave single-touch or optical multi-touch technology, display clarity is undistorted due to use of clear glass. The optical touchscreen enables up to six simultaneous touches for multi-user interaction. Optical technology offers a fast and extremely sensitive response similar to the experience on

mobile devices and is compatible with Microsoft® Windows® 7 and Windows® 8 operating systems. Tilt mounts are available for easy cable access. State of the art HD display technology is utilized including a high contrast/brightness LED-backlit LCD panel, extended color gamut with movie/ gaming/ photo modes, black level adjustment, and on-screen menu enhancements.

Optional, high performance computer modules are available which turn the 4201L into a completely integrated all-in-one computer—without the need for any cables or additional mounting hardware. Computer modules are available in a choice of two models: ECMG2-i3 based on a 3.3GHz Intel® Core i3 processor and HD2500 graphics; and ECMG2-i5 based on a 3.6GHz Intel Core i5 processor and HD4000 graphics. The computer modules make the 4201L a reliable platform that is interoperable with most content management servers and supports optimal partitioning of locally cached and network streamed content.



Benefits:

- Professional-grade hardware with strengthened touchscreen glass to withstand the rigors of public use
- IntelliTouch technology designed to endure medical disinfectant wipe down procedures in healthcare environments
- Thin (<4" mounted) design is attractive and compliant with ADA and IBC protrusion requirements
- Reliable, integrated IDS solution with optional NFC / RFID scanners and webcam kits
- 3 year standard warranty with optional 2 year extended warranty. On-site advance replacement exchange option available in USA
- Remote management capability for device hardware with support for future cloud applications
- Intel OPS compliant with available adapter kit
- Flexible mounting in portrait, landscape and table-top orientation

About Elo

Elo founders pioneered the touch screen over 40 years ago. Today, Elo Touch Solutions is a leading global supplier of touch-enabled technology, products and industry solutions. The Elo portfolio encompasses the broadest selection of OEM touch screen components, touch monitors, and all-in-one touch computers for the demanding requirements of diverse markets, including gaming machines, hospitality systems, industrial automation, interactive kiosks, healthcare, office equipment, point of sale terminals, retail displays, and transportation applications. The Elo touch experience has consistently stood for quality, reliability and innovation with over 20 million installations worldwide.

4201L 42" Interactive Digital Signage (IDS) Touch Display

Specifications	
Model	4201L
Form Factor	Digital Signage
Bezel Color	Black/White
Active Display Area (W x H)	36.6" x 20.6" (930 mm x 523 mm)
Dimensions* (W x D x H)	IntelliTouch: 39.2" x 3.1" x 23.1" (995mm x 77.7mm x 588mm) Optical: 39.2" x 3.2" x 23.1" (995mm x 80.7mm x 588mm)
LCD Technology	Active matrix TFT LCD with LED backlight
Mounting Options*	VESA 4-hole mount per MIS-F, 400, 400, 6MM
Display Technology	Full HD 1920 x 1080 (native) active matrix TFT LCD with LED backlight; 16.7m colors; 16:9 aspect ratio. Other resolutions supported
Aspect Ratio	16:9
Number of Colors	16.7 million
Brightness (typical)	LCD Panel 700 nits; Optical 630 nits; IntelliTouch 630 nits
Response Time (Tr + Tf) (typical)	6 ms
Viewing Angle (typical)	Horizontal: ±89°; Vertical: ±89°
Contrast Ratio (typical)	4000:1
Video Inputs	Video Analog VGA on Female DE-15 connector; HDCP-capable HDMI 1.3 on Type A connector; DisplayPort 1.1a connector; Input Video Horizontal Sync frequency range: 31.5-73KHz; Input Video Vertical Sync (frame rate) frequency range: 47-63Hz
Power	Input power connector: IEC 60320 C14; Input power signal specifications: 100-240VAC 50/60Hz; Monitor Only - Power Consumption: (typical at 110V at 60Hz): ON: 85W; SLEEP: 13W; OFF: 1W; Monitor Only - Power Consumption: (typical at 230V at 50Hz): ON: 82W; SLEEP: 14W; OFF: 2W;
Audio	Internal Speakers: 4 x 5W stereo speakers; Input audio connector: 3.5mm TRS jack; Input audio signal range: 1Vrms max stereo signal (standard PC line out); Headphone output connector: 3.5mm TRS jack
Weight	IntelliTouch: Unpackaged—with ECMG2: 53.7 lbs (24.4kg); without ECMG2: 48.8 lbs (22.2kg); Packaged: with ECMG2: 69.1 lbs (31.4kg); without ECMG2: 64.2 lbs (29.2kg) Optical: Unpackaged—with ECMG2: 57.2 lbs (26.0kg); without ECMG2: 52.4 lbs (23.8kg); Packaged: with ECMG2: 72.6 lbs (33.0kg); without ECMG2: 67.8 lbs (30.8kg)
Shipping Dimensions	Width: 43.7" (1110 mm); Height: 28.3" (720 mm); Depth: 8.5" (215 mm)
Temperature	Operating: 32°F to 104°F (0°C to 40°C); Storage: -4°F to 140°F (-20°C to 50°C)
Humidity (non-condensing)	Operating: 20%-80%; Storage: 10%-95%
Regulatory Approvals and Declarations	UL, FCC; cUL, IC; CB; CE; VCCI; C-Tick; NOM CoC; GOST; BSMI; KC, e-Standby; CCC, China RoHS; with RFID: UL, FCC; CE
Accessories	NFC Adapter (E603158), OPS Kit (E102270), OSD Control Box (E483757) Replacement Cable Kit (E000263), Stand (E455084), Wall Mount Kit (E750497), Webcam (E828885)
Warranty	3 years standard. On-site exchange (U.S. only) and extended warranty available
MTBF	50,000 hours demonstrated

*See dimensional drawings for details

Ordering Information

Model	Part Number	Technology	Color
4201L	E561836	42-inch LED IntelliTouch	Black
	E802697	42-inch LED IntelliTouch	White
	E107085	42-inch LED Optical multi-touch	Black

Optional Computer Modules

Model	Part Number	Processor	RAM	HDD	OS
ECMG2-i3	E776797	Intel Core i3 3.3GHz HD2500	2GB	320GB	No OS
	E487570	Intel Core i3 3.3GHz HD2500	2GB	320GB	Windows 7
ECMG2-i5	E272400	Intel Core i5 3.6GHz HD4000	4GB	320GB	No OS
	E584199	Intel Core i5 3.6GHz HD4000	4GB	320GB	Windows 7

To find out more about our extensive range of Elo touch solutions, go to www.elotouch.com, or call the office nearest you.

North America

Elo Touch Solutions
1033 McCarthy Boulevard
Milpitas, CA 95035

800-ELO-TOUCH

Tel +1 408 597 8000
Fax +1 408 597 8050

customerservice@elotouch.com

Europe

Tel +32 (0)16 70 45 00
Fax +32 (0)16 70 45 49
elosales@elotouch.com

Asia-Pacific

Tel +86 (21) 3329 1385
Fax +86 (21) 3329 1400
www.elotouch.com.cn

Latin America

Tel 786-923-0251
Fax 305-931-0124
www.elotouch.com

Elo Touch Solutions, Inc. reserves the right to change or update, without notice, any information contained herein; to change, without notice, the design, construction, materials, processing or specifications of any products; and to discontinue or limit production or distribution of any products. Elo (logo) and Elo Touch Solutions are trademarks of Elo Touch Solutions, Inc. Copyright 2013 Elo Touch Solutions, Inc. All rights reserved. DS000072, rev C 09/13



- Deliver interactive brand experiences
- Dual-touch performance with “Built for Touch” reliability
- Thin, commercial-grade touchscreen ideal for wayfinding, whiteboard, and other office applications



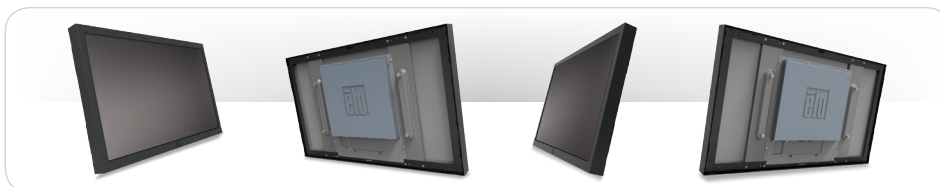
4209L 42” Interactive Digital Signage (IDS) Touchscreen

Elo's 4209L Interactive Digital Signage display combines an IntelliTouch Plus multi-touch touchscreen with a professional-grade, large format display in a slim, integrated form factor. Designed from the bottom up for retail, hospitality, and other commercial markets, the 4209L is a high-quality, interactive canvas for attracting and engaging consumers. The 4209L offers system integrators and value-added resellers (VARs) a professional-grade, cost-effective solution that is easy to deploy and maintain in public environments. With a total thickness of 2.6 inches (66.04 mm), the 4209L is compliant with the ADA and IBC requirements of less than 4-inch protrusion for wall-mounted products when used with a compatible wall-

mount. It also incorporates an LED-based LCD panel that reduces power consumption and heat output.

The Elo IntelliTouch Plus® surface acoustic wave technology provides dual-touch performance with undistorted display clarity due to use of clear glass. The touchscreen glass is tested to comply with UL60950 ball drop requirements (0.5 kg ball drop at 1.3m) to support installation in public access environments.

State of the art HD display technology is utilized including a high contrast/ brightness LED-backlit LCD panel, extended color gamut with movie/ gaming/ photo modes, black level adjustment, and on-screen menu enhancements.



Benefits

- Professional-grade hardware with strengthened touchscreen glass to withstand the rigors of public use
- Thin (<3" mounted) design is attractive and compliant with ADA and IBC protrusion requirements
- Flexible mounting in portrait or landscape orientation
- 3 year standard warranty with optional 2 year extended warranty

About Elo

Elo founders pioneered the touch screen over 40 years ago. Today, Elo Touch Solutions is a leading global supplier of touch-enabled technology, products and industry solutions. The Elo portfolio encompasses the broadest selection of OEM touchscreen components, touchmonitors, and all-in-one touchcomputers for the demanding requirements of diverse markets, including gaming machines, hospitality systems, industrial automation, interactive kiosks, healthcare, office equipment, point of sale terminals, retail displays, and transportation applications. The Elo touch experience has consistently stood for quality, reliability and innovation with over 20 million installations worldwide.

4209L 42-inch Interactive Digital Signage Touchscreen

Specifications	
Model	4209L
Form Factor	Digital Signage
Bezel Color	Gray
Active Display Area	36.6"x20.6" (930.24mm x 523.26mm)
Dimensions* (W x D x H)	39.0" x 2.6" x 23.1" (991mm x 67mm x 588 mm)
LCD Technology	Active matrix TFT LCD with LED backlight
Diagonal Size	42.0" (1067.3 mm)
On-Screen Display (OSD)	Accessible through switches on the OSD Control Remote accessory; Controls: Menu, Up, Down, Select; Settings: Brightness, Contrast, Clock, Phase, H-position, V-position, Auto-Adjust, Aspect Ratio, Sharpness, Color temperature, OSD Timeout, OSD Language, Recall Defaults, Video Source; Languages: English, French, Italian, German, Spanish, Simplified Chinese, Traditional Chinese, Japanese; Lockouts: OSD, Power
Mounting Options*	400mmx400mm VESA 4-hole mounting interface on rear of unit
Aspect Ratio	16:9
Native Resolution	1920x1080
Other Supported Resolutions	640x480 60Hz, 720x480 60Hz, 720x576 50Hz, 800x600 56Hz, 1024x768 60Hz, 1280x720 50, 60Hz, 1280x960 60Hz, 1280x1024 60 Hz, 1440x900 60Hz, 1366x768 60Hz, 1680x1050 60Hz, 1920x1080 50, 60Hz
Number of Colors	1073 million
Brightness (typical)	LCD Panel 500 nits; with IntelliTouch Plus 450 nits
Response Time (Tr + Tf) (typical)	8 ms
Viewing Angle (typical)	Horizontal: 178°; Vertical: 178°
Contrast Ratio (typical)	4000:1
Video Inputs	Analog VGA on Female DE-15 connector; HDCP-capable HDMI 1.3 on Type A connector (ET4209L-XXWA models only); Digital DVI on Female DVI-D, Dual-Link connector (ET4243L-XXAA models only); Input Video Horizontal Sync frequency range: 31.5-75kHz; Input Video Vertical Sync (frame rate) frequency range: 47-63Hz
Power	Input power connector: IEC 60320 C14; Input power signal specifications: 110-240VAC 50/60Hz; Monitor Only - Power Consumption: (typical at 110V at 60Hz): ON: 105.0W; SLEEP: 7.0W; OFF: 5.5W; Monitor Only - Power Consumption: (typical at 230V at 50Hz): ON: 101.0W; SLEEP: 6.0W; OFF: 5.0W;
Weight	Unpackaged: 46.96 lbs (21.3 kg); Packaged: 63.71 lbs (28.9 kg);
Shipping Dimensions	45.98"x33.7"x11.02" (1168mmx856mmx280mm)
Temperature	Operating: 32°F to 104°F (0°C to 40°C); Storage: -4°F to 122 °F (-20°C to 50°C)
Humidity (non-condensing)	Operating: 20%-80%; Storage: 10%-95%
Regulatory approvals and declarations	UL, FCC; cUL, IC; CB; CE; VCCI, C-Tick; NOM CoC; BSMI; KC, e-Standby; CCC, China RoHS; GOST IntelliTouch Plus screen: United States UL 60950 ball-drop compliant
Warranty	3 years standard
MTBF	50,000 hours demonstrated

*See dimensional drawings for details

Ordering Information

Model	Part Number	Technology	Color
4209L	E000734	4209L 42-inch wide LED monitor, VGA & HDMI video interface, IntelliTouch Plus, USB touch controller interface, Worldwide-version, Clear	Gray
4209L	E000735	4209L 42-inch wide LED monitor, VGA & DVI video interface, IntelliTouch Plus, USB touch controller interface, Asia-version, Clear	Gray

Optional Peripherals

Peripheral	Part Number
Cable Kit for Replacement Cables	E378229
Remote On-Screen Display (OSD)	E483757
Stand	E455084

To find out more about our extensive range of Elo touch solutions, go to www.elotouch.com, or call the office nearest you.

North America

Elo Touch Solutions
1033 McCarthy Boulevard
Milpitas, CA 95035

800-ELO-TOUCH

Tel +1 408 597 8000
Fax +1 408 597 8001
customerservice@elotouch.com

Europe

Tel +32 (0)16 70 45 00
Fax +32 (0)16 70 45 49
elosales@elotouch.com

Asia-Pacific

Tel +86 (21) 3329 1385
Fax +86 (21) 3329 1400
www.elotouch.com.cn

Latin America

Tel 786-923-0251
Fax 305-931-0124
www.elotouch.com

Elo Touch Solutions, Inc. reserves the right to change or update, without notice, any information contained herein; to change, without notice, the design, construction, materials, processing or specifications of any products; and to discontinue or limit production or distribution of any products. Elo (logo) and Elo Touch Solutions are trademarks of Elo Touch Solutions, Inc. Copyright 2014 Elo Touch Solutions, Inc. All rights reserved. DS000092, rev C 08/14



- Big, bright and beautiful touchscreen delivers interactive brand experiences
- Six-touch performance with “Built for Touch” reliability
- Thin, commercial-grade touchscreen ideal for wayfinding, whiteboard, and other office applications
- Optional integrated Intel Core i3/i5 computer modules with Microsoft Windows



5501L 55” Interactive Digital Signage Display

The 5501L Interactive Digital Signage display combines an optical multi-touch touchscreen with a professional-grade, large format display in a slim, integrated package. For retail, hospitality, commercial real estate, education, corporate meeting rooms or lobbies and other commercial applications, the large wide-screen format offers a high-quality, interactive canvas for attracting and engaging consumers. The 5501L offers system integrators and value-added resellers (VARs) a high performance solution that is easy to deploy and maintain. With a total thickness of 3.5 inches (89mm), the 5501L is compliant with the ADA and IBC requirements of less than 4” protrusion for wall-mounted products when used with a compatible wall-mount.

With a 700 nit LED panel, the 5501L is a bright, high quality display suitable for public environments. The optical touchscreen enables up to six simultaneous touches for multi-user

interaction. This touch technology offers a fast and extremely sensitive response similar to the experience on mobile devices and is compatible with Microsoft® Windows® 7 and Windows 8 operating systems. The touchscreen glass is 4mm thick and is fully tempered.

Optional, high performance computer modules are available which turn the 5501L into a completely integrated all-in-one computer — without the need for any cables or additional mounting hardware. Computer modules are available in a choice of two models: ECMG2-i3 based on a 3.3GHz Intel® Core i3 processor and HD2500 graphics; and ECMG2-i5 based on a 3.6GHz Intel Core i5 processor and HD4000 graphics. The high performance, commercial-grade computer modules make the 5501L a reliable platform that is interoperable with most content management servers and supports optimal partitioning of locally cached and network streamed content.



Benefits:

- Professional-grade hardware including tempered touchscreen glass to withstand the rigors of public use
- Thin (<4” mounted) design is attractive and compliant with ADA and IBC protrusion requirements
- Reliable, integrated interactive digital signage solutions with optional NFC and RFID scanners and webcam kits
- Remote management capability for device hardware with support for future cloud applications
- Intel OPS compliant with available adapter kit
- Flexible mounting in portrait, landscape and table-top orientation
- 3 year standard warranty with optional 2 year extended warranty

About Elo

Elo founders pioneered the touchscreen over 40 years ago. Today, Elo Touch Solutions is a leading global supplier of touch-enabled technology, products and industry solutions. The Elo portfolio encompasses the broadest selection of OEM touchscreen components, touchmonitors, and all-in-one touchcomputers for the demanding requirements of diverse markets, including gaming machines, hospitality systems, industrial automation, interactive kiosks, healthcare, office equipment, point of sale terminals, retail displays, and transportation applications. The Elo touch experience has consistently stood for quality, reliability and innovation with over 20 million installations worldwide.

5501L 55" Interactive Digital Signage (IDS) Touch Display

Specifications	
Model	5501L
Form Factor	Digital Signage
Bezel Color	Black
Active Display Area (W x H)	47.6" x 26.7" (1209mm x 680mm)
Dimensions* (W x D x H)	49.8" x 3.5" x 29.0" (1265mm x 89mm x 737mm)
LCD Technology	Active matrix TFT LCD with LED backlight
Mounting Options*	VESA 4-hole mount per MIS-F, 600, 600, 6MM
Display Technology	Full HD 1920 x 1080 (native) active matrix TFT LCD with LED backlight; 16.7m colors; 16:9 aspect ratio. Other resolutions supported
Aspect Ratio	16:9
Number of Colors	16.7 million
Brightness (typical)	LCD Panel 700 nits; with touchscreen 630 nits
Response Time (Tr + Tf) (typical)	6 ms
Viewing Angle (typical)	Horizontal: ±89°; Vertical: ±88°
Contrast Ratio (typical)	4000:1
Video Inputs	Video Analog VGA on Female DE-15 connector; HDCP-capable HDMI 1.3 on Type A connector; DisplayPort 1.1a connector; Input Video Horizontal Sync frequency range: 31.5-73KHz; Input Video Vertical Sync (frame rate) frequency range: 47-63Hz
Power	Input power connector: IEC 60320 C14; Input power signal specifications: 100-240VAC 50/60Hz; Monitor Only - Power Consumption: (typical at 120V at 60Hz): ON: 122W; SLEEP: 13W; OFF: 2W; Monitor Only - Power Consumption: (typical at 230V at 50Hz): ON: 120W; SLEEP: 12W; OFF: 2.4W;
Audio	Internal Speakers: 4 x 5W stereo speakers; Input audio connector: 3.5mm TRS jack; Input audio signal range: 1Vrms max stereo signal (standard PC line out); Headphone output connector: 3.5mm TRS jack
Weight	Unpackaged—with ECMG2: 98.5 lbs (44.7kg); without ECMG2: 94.8 lbs (43kg); Packaged: with ECMG2: 114 lbs (51.7kg); without ECMG2: 110.2 lbs (50kg)
Shipping Dimensions	Width: 56.0" (1422mm); Height: 34.5" (876mm); Depth: 9.8" (249mm)
Temperature	Operating: 32°F to 104°F (0°C to 40°C); Storage: -4°F to 140°F (-20°C to 50°C)
Humidity (non-condensing)	Operating: 20%-80%; Storage: 10%-95%
Regulatory Approvals and Declarations	UL, FCC; cUL, IC; CB; CE; VCCI; C-Tick; NOM CoC; GOST; BSMI; KC, e-Standby; CCC, China RoHS; with RFID: UL, FCC; CE
Accessories	NFC Adapter (E918074), OPS Kit (E102270), OSD Control Box (E483757) Replacement Cable Kit (E000263), Wall Mount Kit (E000802), Webcam (E574975)
Warranty	3 years standard. On-site exchange (U.S. only) and extended warranty available
MTBF	50,000 hours demonstrated

*See dimensional drawings for details

Ordering Information

Model	Part Number	Technology	Color
5501L	E000677	55-inch LED Optical	Black

Optional Computer Modules

Model	Part Number	Processor	RAM	HDD	OS
ECMG2-i3	E776797	Intel Core i3 3.3GHz HD2500	2GB	320GB	No OS
	E487570	Intel Core i3 3.3GHz HD2500	2GB	320GB	Windows 7
ECMG2-i5	E272400	Intel Core i5 3.6GHz HD4000	4GB	320GB	No OS
	E584199	Intel Core i5 3.6GHz HD4000	4GB	320GB	Windows 7

To find out more about our extensive range of Elo touch solutions, go to www.elotouch.com, or call the office nearest you.

North America

Elo Touch Solutions
1033 McCarthy Boulevard
Milpitas, CA 95035

800-ELO-TOUCH

Tel +1 408 597 8000

Fax +1 408 597 8001

customerservice@elotouch.com

Europe

Tel +32 (0)16 70 45 00

Fax +32 (0)16 70 45 49

elosales@elotouch.com

Asia-Pacific

Tel +86 (21) 3329 1385

Fax +86 (21) 3329 1400

www.elotouch.com.cn

Latin America

Tel +1 786-923-0251

Fax +1 305-931-0124

www.elotouch.com

Elo Touch Solutions, Inc. reserves the right to change or update, without notice, any information contained herein; to change, without notice, the design, construction, materials, processing or specifications of any products; and to discontinue or limit production or distribution of any products. Elo (logo) and Elo Touch Solutions are trademarks of Elo Touch Solutions, Inc. Copyright 2013 Elo Touch Solutions, Inc. All rights reserved. DS000084, rev A 1/14



- Big, bright, and beautiful “life-size” scale delivers interactive brand experiences
- Thin, commercial-grade touch screen ideal for wayfinding, whiteboard, and other office applications
- Integrated Intel Core i3/i5 processors running Microsoft Windows®



7001L 70” Interactive Digital Signage Display

The 7001L Interactive Digital Signage display combines an optical multi-touch touchscreen with a professional-grade, large format display in a slim, integrated package. For retail, hospitality, commercial real estate, education and other commercial applications, the large wide-screen format offers a high-quality, interactive canvas for attracting and engaging consumers. The 7001L offers system integrators and value-added resellers (VARs) a high performance solution that is easy to deploy and maintain. With a total thickness of 3.5 inches (89mm), the 7001L is compliant with the ADA requirement of less than 4” protrusion for wallmounted products when used with a compatible wall-mount.

With a 700 nit LED panel, the 7001L is a bright, high quality display suitable for public environments. The optical touchscreen enables up to six simultaneous touches for multi-user interaction. This touch technology

offers a fast and extremely sensitive response similar to the experience on mobile devices and is compatible with Microsoft Windows® 7 and Windows® 8 operating systems. The touchscreen is 4mm thick with fully tempered glass.

Optional, high performance computer modules are available which turn the 7001L into a completely integrated all-in-one computer — without the need for any cables or additional mounting hardware. Computer modules are available in a choice of two models: ECMG2-i3 based on a 3.3GHz Intel Core i3 processor and HD2500 graphics; and ECMG2-i5 based on a 3.6GHz Intel Core i5 processor and HD4000 graphics. The high performance, commercial-grade computer modules make the 7001L a reliable platform that is interoperable with most content management servers and supports optimal partitioning of locally cached and network streamed content.



Benefits:

- Professional-grade hardware including tempered touchscreen glass to withstand the rigors of public use
- Thin (<4” mounted) design is attractive and compliant with ADA and IBC protrusion requirements
- Reliable, integrated interactive digital signage solutions with optional NFC and RFID scanners and webcam kits
- 3 year standard warranty with optional 2 year extended warranty. On-site advance replacement exchange option available in USA
- Remote management capability for device hardware with support for future cloud applications
- Intel OPS compliant with available adapter kit
- Flexible mounting in portrait, landscape and table-top orientation

About Elo

Elo founders pioneered the touch screen over 40 years ago. Today, Elo Touch Solutions is a leading global supplier of touch-enabled technology, products and industry solutions. The Elo portfolio encompasses the broadest selection of OEM touch screen components, touch monitors, and all-in-one touch computers for the demanding requirements of diverse markets, including gaming machines, hospitality systems, industrial automation, interactive kiosks, healthcare, office equipment, point of sale terminals, retail displays, and transportation applications. The Elo touch experience has consistently stood for quality, reliability and innovation with over 20 million installations worldwide.

7001L 70" Interactive Digital Signage (IDS) Touch Display

Part Number E027378	
Model	7001L
Form Factor	Interactive Digital Signage
Bezel color	Black
Active Display Area (W x H)	60.6" x 34.1" (1538.9mm x 865.6mm)
Dimensions (W x D x H)	62.8" x 3.5" x 36.2" (1593.9mm x 88.7mm x 920.6mm)
Display Technology	Active matrix TFT LCD with LED backlight
Diagonal Size	69.5" (176.6cm)
On-Screen Display (OSD) (accessible via switches on tethered OSD Control unit)	Settings: Brightness, Contrast, Auto-Adjust, Aspect Ratio, Sharpness, Color Temperature; OSD Rotation; OSD Timer; Color Adjust; Color Preference; Audio Controls; Video; MDC Protocol; Black Level; Light Sensor; Sharpness Level; Aspect Ratio; Languages: English, French, Italian, German, Spanish, Simplified Chinese, Traditional Chinese, Japanese
Mounting Options	VESA 4-hole mount per MIS-F, 400, 400, 8mm
Native Resolution	1920x1080 60Hz (Full HD). Other resolutions supported.
Aspect Ratio	16:9
Number of Colors	16.7 million
Brightness (typical)	LCD Panel: 700 nits; with touchscreen: 630 nits
Response Time (Tr + Tf) (typical)	6ms
Viewing Angle (typical)	Horizontal: ±88°; Vertical: ±88°
Contrast Ratio (typical)	5000:1
Video Inputs	Analog VGA on Female DE-15 connector; HDCP-capable HDMI 1.3 on Type A connector; DisplayPort 1.1a connector; Input Video Horizontal Sync frequency range: 31.5-73KHz; Input Video Vertical Sync (frame rate) frequency range: 47-63Hz
Input Power Connector	IEC 60320 C14
Input Power Signal Specifications	100-240VAC 50/60Hz
Power Consumption (typical)	Monitor only: 110V at 60Hz—ON: 145.0W, SLEEP: 13.5W, OFF: 0.5W; 230V at 50Hz—ON: 149.0W, SLEEP: 14.5W, OFF: 0.8W Monitor with ECMG2-i5: 110V at 60Hz—ON: 165.0W, SLEEP: 13.0W, OFF: 11.0W; 230V at 50Hz—ON: 162.0W, SLEEP: 15.0W, OFF: 13.0W
Audio	Internal Speakers: 4 x 5 W stereo speakers; Input audio connector: 3.5mm TRS jack; Input audio signal range: 1Vrms max stereo signal (standard PC line out); Headphone output connector: 3.5mm TRS jack
Weight	Unpackaged weight, monitor only: 131 lb (59.4kg)
Shipping Dimensions (W x D x H)	Top of box: 70.1" x 14.4" x 43.3" (1780mm x 365mm x 1100mm); Bottom of box: 69.5" x 13.8" x 9.9" (1765mm x 350mm x 252mm)
Temperature	Operating: 32°F to 104°F (0°C to 40°C); Storage: -4°F to 122°F (-20°C to 50°C)
Humidity (non-condensing)	Operating: 20%-80%; Storage: 10%-95%
Regulatory approvals and declarations	UL, FCC; cUL, IC; CB; CE; VCCI; C-Tick; NOM CoC; GOST; BSMI; KC, e-Standby; CCC, China RoHS RFID UL, FCC; CE
Accessories	MSR (E545781), NFC Adapter (E918074), OPS Kit (E102270), OSD Control Box (E483757) Replacement Cable Kit (E000263), Wall Mount Kit (E785667), Webcam (E574975)
Warranty	3 years standard. On-site exchange (U.S. only) and extended warranty available.
MTBF	50,000 hours estimated

Ordering Information

Model	Part Number	Description
7001L	E027378	70-inch LED Optical multi-touch Interactive Digital Sign

Optional Computer Modules

Model	Part Number	Processor	RAM	HDD	OS
ECMG2-i3	E776797	Intel Core i3 3.3GHz HD2500	2GB	320GB	No OS
ECMG2-i3	E487570	Intel Core i3 3.3GHz HD2500	2GB	320GB	Windows 7
ECMG2-i5	E272400	Intel Core i5 3.6GHz HD4000	4GB	320GB	No OS
ECMG2-i5	E584199	Intel Core i5 3.6GHz HD4000	4GB	320GB	Windows 7

To find out more about our extensive range of Elo touch solutions, go to www.elotouch.com, or call the office nearest you.

North America

Elo Touch Solutions
1033 McCarthy Boulevard
Milpitas, CA 95035

800-ELO-TOUCH

Tel +1 408 597 8000
Fax +1 408 597 8050
customerservice@elotouch.com

Europe

Tel +32 (0)16 70 45 00
Fax +32 (0)16 70 45 49
elosales@elotouch.com

Asia-Pacific

Tel +86 (21) 3329 1385
Fax +86 (21) 3329 1400
www.elotouch.com.cn

Latin America

Tel 786-923-0251
Fax 305-931-0124
www.elotouch.com

Elo Touch Solutions, Inc. reserves the right to change or update, without notice, any information contained herein; to change, without notice, the design, construction, materials, processing or specifications of any products; and to discontinue or limit production or distribution of any products. Elo (logo) and Elo Touch Solutions are trademarks of Elo Touch Solutions, Inc. Windows is a trademark of Microsoft Corporation. Copyright 2013 Elo Touch Solutions, Inc. All rights reserved. DS000070, rev B 09/13



- Integrates touch computing with Interactive Digital Signage
- Intel Core i3/i5 processors running Microsoft Windows
- Platform for collaboration, digital whiteboard, building directory, virtual receptionist and other applications
- 3 year global warranty



ECMG2 Computer Modules for Interactive Digital Signage

The Elo Interactive Digital Signage (IDS) touch screen enables increased customer engagement and immersive brand experiences by adding an exciting new dimension to traditional broadcast digital signage – the power of touch. Elo's ECMG2 computer modules, available for use with the Elo 3201L, 4201L and 7001L IDS touchscreens are well-suited for interactive media delivery and online collaboration for modern office environments. Computer modules are available in a choice of two models: ECMG2-i3 based on a 3.3GHz Intel® Core i3 processor and HD2500 graphics; and ECMG2-i5 based on a 2.9GHz (3.6 GHz Max Turbo) Intel Core i5 processor and HD4000 graphics.

Centralized management and security capabilities of Microsoft® Windows® ensures compatibility with many content management servers and web-based consoles for seamless connection with the internet, digital marketing, interactive whiteboard, building directory, virtual receptionist, and point-of-information (POI) applications.

The ECMG2 computer modules can support optimal partitioning of locally cached and network stored content, allowing developers to monitor and deploy content via device-to-device or web connections.



Benefits:

- A fully self-contained computing solution when coupled with Elo IDS touch screens
- Professional-grade hardware provides improved durability
- Intel Core i3 and Core i5 with high-end graphics enable media-rich interactive experiences
- Quick-access hard drive for easy initial imaging and field service.
- Microsoft Windows platform offers maximum compatibility

About Elo

Elo founders pioneered the touch screen over 40 years ago. Today, Elo Touch Solutions is a leading global supplier of touch-enabled technology, products and industry solutions. The Elo portfolio encompasses the broadest selection of OEM touch screen components, touch monitors, and all-in-one touch computers for the demanding requirements of diverse markets, including gaming machines, hospitality systems, industrial automation, interactive kiosks, healthcare, office equipment, point of sale terminals, retail displays, and transportation applications. The Elo touch experience has consistently stood for quality, reliability and innovation with over 20 million installations worldwide.

ECMG2 Computer Modules for Interactive Digital Signage Touch Displays

Specifications			
Module Dimensions	Width: 10.8" (274 mm) Depth: 9.8" (248 mm) Height: 1.8" (45.7 mm)		
Processor	<table border="0"> <tr> <td>Intel Core i3 i3-3220 3.30 GHz 3MB Intel® Smart Cache 5 GT/s DMI</td> <td>Intel Core i5 i5-3475S 2.9GHz (3.6 GHz Max turbo) 6MB Intel® Smart Cache 5 GT/s DMI</td> </tr> </table>	Intel Core i3 i3-3220 3.30 GHz 3MB Intel® Smart Cache 5 GT/s DMI	Intel Core i5 i5-3475S 2.9GHz (3.6 GHz Max turbo) 6MB Intel® Smart Cache 5 GT/s DMI
Intel Core i3 i3-3220 3.30 GHz 3MB Intel® Smart Cache 5 GT/s DMI	Intel Core i5 i5-3475S 2.9GHz (3.6 GHz Max turbo) 6MB Intel® Smart Cache 5 GT/s DMI		
Chipset	Intel® H61 Express Chipset		
Video	i3 – Intel® HD 2500 i5 – Intel® HD 4000		
BIOS	AMI		
Memory (RAM) Standard/max./slots	i3 – 2GB DDR3 SO-DIMM on 1 of 2 slots i5 – 4GB DDR3 SO-DIMM on 1 of 2 slots (Expandable up to 8GB MAX SO-DIMM DDR3-1333/1600 (PC3-10600))		
Hard Disk Drive	320GB 2.5" ADVANCED FORMAT (AF) SATA HDD		
Operating Systems Supported	No Operating System Microsoft Windows 7 Professional (32-bit)		
Languages	Windows 7: 35 language groups: Arabic, Brazilian Portuguese, Bulgarian, Chinese (Simplified), Chinese (Traditional), Chinese (Hong Kong), Croatian, Czech, Danish, Dutch, English, Estonian, Finnish, French, German, Greek, Hebrew, Hindi, Hungarian, Italian, Japanese, Korean, Lithuanian, Norwegian, Polish, Portuguese, Romanian, Russian, Serbian Latin, Slovak, Slovenian, Spanish, Swedish, Thai, Turkish, Ukrainian		
USB Port (s)	4 x Type A ports		
Ethernet Port(s)	1 x LAN RJ45 (Gigabit)		
Audio Port(s)	Microphone in, line out		
Rear I/O (Summary of all above ports)	4 Type A USB ports 1 Gigabit Ethernet LAN RJ45 port 3 3.5 mm TRS jacks for Audio In, Audio Out, Microphone in		
Real Time Clock	Replaceable lithium-ion battery for clock		
Power Supply	Power supplied by Interactive Digital Signage display		
Weight	Actual: 4.47 lb (2.03 Kg) Shipping: 6.4 lb (2.9 Kg)		
Shipping Box Dimensions	Width: 15.4" (392 mm) Depth: 14.25" (362 mm) Height: 5.1" (130 mm)		
Temperature	Operating : 0°C to 40°C (32°F to 104°F) Storage : -20°C to 60°C (-4°F to 140°F)		
Humidity (non-condensing)	Operating : 20% to 80% Storage : 5% to 95%		
Agency Approvals	US UL, FCC; Canada cUL, IC; Europe CE; Japan VCCI; Taiwan BSMI; Korea KC; International CB		
Warranty	3 years		
MTBF	50,000 hours demonstrated		

Ordering Information

Model	Part Number	Processor	RAM	HDD	OS
ECMG2-i3	E776797	Intel Core i3 3.3GHz HD2500	2GB	320GB	No OS
	E487570	Intel Core i3 3.3GHz HD2500	2GB	320GB	Windows 7
ECMG2-i5	E272400	Intel Core i5 3.6GHz HD4000	4GB	320GB	No OS
	E584199	Intel Core i5 3.6GHz HD4000	4GB	320GB	Windows 7

To find out more about our extensive range of Elo touch solutions, go to www.elotouch.com, or call the office nearest you.

North America

Elo Touch Solutions
1033 McCarthy Boulevard
Milpitas, CA 95035

800-ELO-TOUCH

Tel +1 408 597 8000
Fax +1 408 597 8050
customerservice@elotouch.com

Europe

Tel +32 (0)16 70 45 00
Fax +32 (0)16 70 45 49
elosales@elotouch.com

Asia-Pacific

Tel +86 (21) 3329 1385
Fax +86 (21) 3329 1400
www.elotouch.com.cn

Latin America

Tel 786-923-0251
Fax 305-931-0124
www.elotouch.com

Elo Touch Solutions, Inc. reserves the right to change or update, without notice, any information contained herein; to change, without notice, the design, construction, materials, processing or specifications of any products; and to discontinue or limit production or distribution of any products. Elo (logo) and Elo Touch Solutions are trademarks of Elo Touch Solutions, Inc. Copyright 2013 Elo Touch Solutions, Inc. All rights reserved. DS000079, rev A 07/2013





www.logiscenter.com
902 050 030



www.logiscenter.it
02 479 216 97



www.logiscenter.de
info@logiscenter.de



www.logiscenter.pt
308 800 842

About LOGISCENTER

Grupo Logiscenter is the leading provider in Europe of automatic identification and data capture equipments. Our products include barcode printing and reading devices, mobile computing devices, wireless access points, identification cards, and consumables.

Reasons to work with us

Our customers come first. Our objective is not only selling our products but also holding a long-lasting relationship with our customers, based on the benefits and advantages we create for you and your company.

The best brands. We offer products from the best manufacturers worldwide.

Expert technical support team. Our support staff are experts in the products we sell. But not just the products, they can tell you the best solution for your particular problem or need.

Largest stock. We have a permanent stock of more than 12,000 products.

Same-day shipping. For all orders placed and confirmed before 16:00 on working days.

Best prices. With Logiscenter, you can be sure that you are paying a fair price for your products we will not overcharge you.

Easy returns. Damaged or defective products can be returned easily, for an exchange or reimbursement.

Our Brands



MOTOROLA



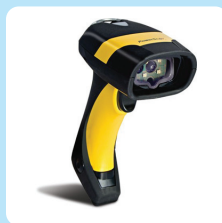
datamax • o'neil



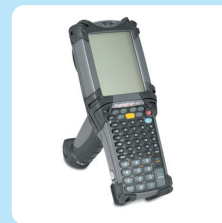
Solutions for: Industry • Consumer • Mobility Transportation and Logistics • Retail • Health



Label printers



Barcode readers



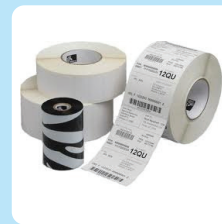
Data terminals & PDA



PVC card printers



RFID



Consumables
(labels, ribbons, PVC cards)



**All Brands
Technical Service**