

Children's electric car

AUDI RS TT



User manual

You can only use the product after reading this manual!

Thank you for purchasing our product. It is a highly innovative electric mobile product. Not intended for children under 3 years.

WARNING! Before using the product, make sure that you have read this manual properly and understood the instructions in it to use this product. Before use, familiarize yourself thoroughly with all the functions and how to operate the device, to avoid falls and other inconveniences, etc. The user manual mentions all instructions and instructions, the user is obliged to read them carefully and follow them. This product is not a means of transport and must be used under the supervision of adults. Our company is not responsible for any consequences that may result from mishandling this product. For further information or in case of additional questions, please contact us. Upon finding any defect or suspected defect, the customer is obliged to immediately report this defect to the seller, who will take care of any complaints. It is strictly forbidden to continue using and attempting to disassemble the product after a defect is detected or suspected. Only charge the scooter with the original charger.

It is forbidden to use:

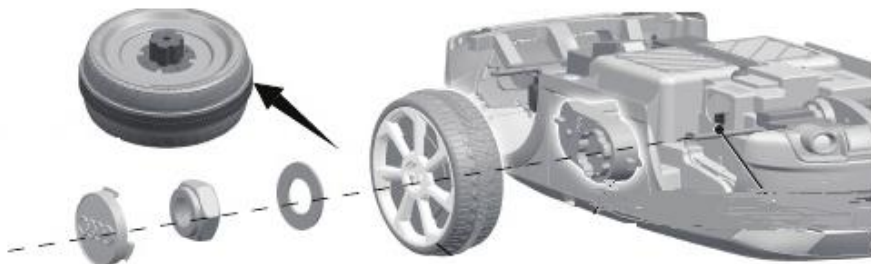
- without the supervision of the adult responsible person,
- without a thorough study of the manual,
- after ingestion of alcohol or addictive and hallucinogenic substances,
- without protective equipment and sturdy footwear,
- in means of transport,
- to turn sharply at high speed, drive at a speed that matches your skills,
- move violently or perform any other activity that could lead to reduced driving attention
- in bad weather, on rainy days or even in the snow. The user is obliged to prevent any contact with moisture and liquid in any state,
- on wet, slippery, frozen, muddy, snowy, stony or sandy surfaces,
- on rough, bumpy or otherwise uneven surfaces, avoid all obstacles,
- in the vicinity of combustibles, fire or substances which may give rise to open flames,
- if your weight does not correspond to the interval specified in this manual,
- for the carriage of more than one person,
- for the transport of animals and various equipment.

If you do not agree with the instructions in this manual, do not use the product.

ASSEMBLY OF THE CAR - ASSEMBLY OF WHEELS

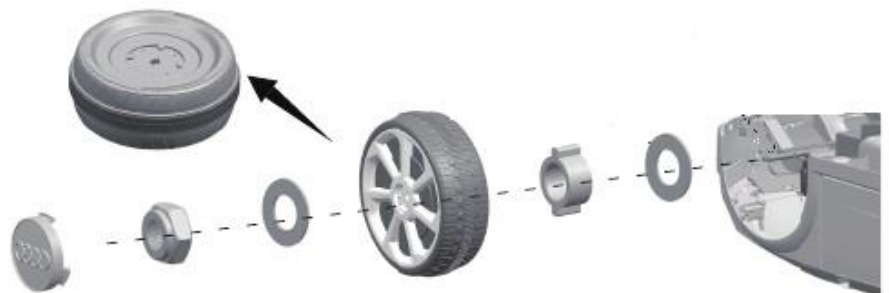
Turn the body down.

1. Slide the gearbox onto the rear axle. The transmission marked "R" should be adapted to the right side of the vehicle body;
2. Move the steering wheel to the rear axle. And keep the bicycle in contact with the transmission.
3. Slide the $\varnothing 10$ seal onto the rear axle.



4. Tighten the lock nut on the rear axle end with a wrench.
5. Replace the logo cap on wheels.

1. Slide the $\varnothing 10$ seal onto the front axle.
2. Insert the grommet into the hole in the center of the wheel.
3. Place the wheel on the rear axle.
4. Slide the $\varnothing 10$ seal onto the front axle.
5. Tighten the lock nut on the front axle end with a wrench.
6. "Attach" the wheel cover to the wheel.

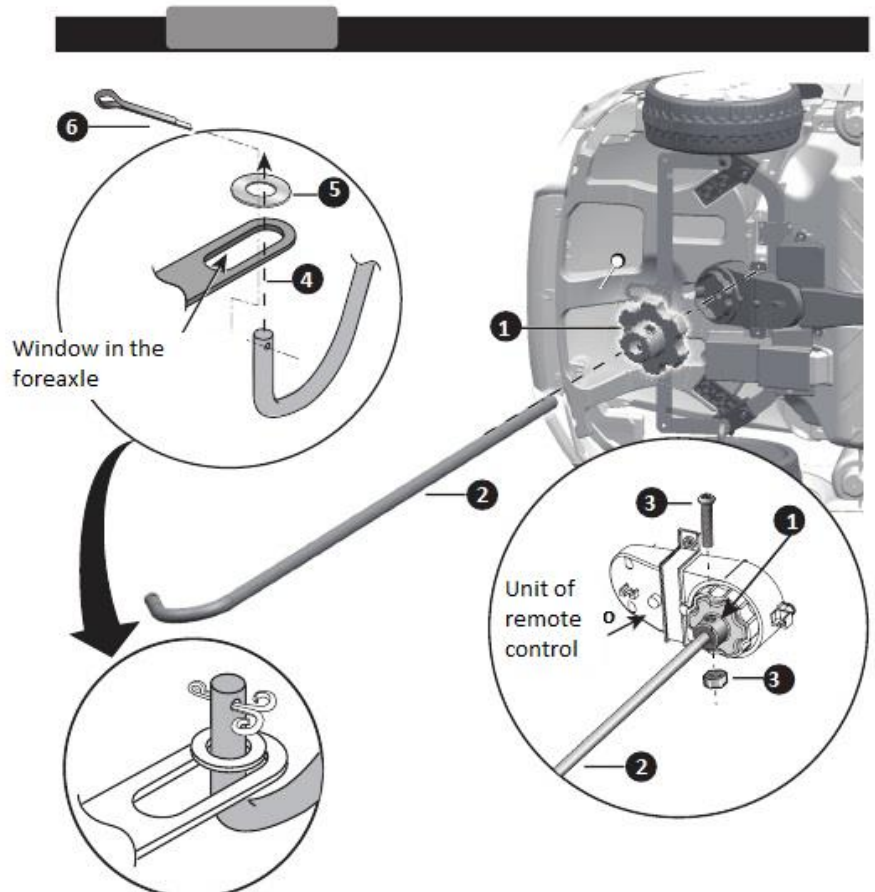


ASSEMBLY OF THE CAR - CONTROL UNIT, CONNECTION OF THE REMOTE CONTROL UNIT

Turn the body sideways.

Use a screwdriver to unscrew the M5x22 screw and $\varnothing 5$ nut from the remote control unit.

1. Connect the remote control unit to the gearbox
2. Insert the straight end of the steering rod up through the hole in the remote control unit, the hole in the transmission from the bottom and out through the hole in the instrument panel.
3. Align the holes on the remote control unit and the hole in the steering rod, tighten the M5x22 screw and the $\varnothing 5$ nut back to the same place.
4. Insert the bent end of the steering rod through the hole in the front axle.
5. Install a $\varnothing 10$ seal on the bent end of the steering rod.
6. Insert the pin into the hole in the steering rod, bend the ends with long pliers (not included).



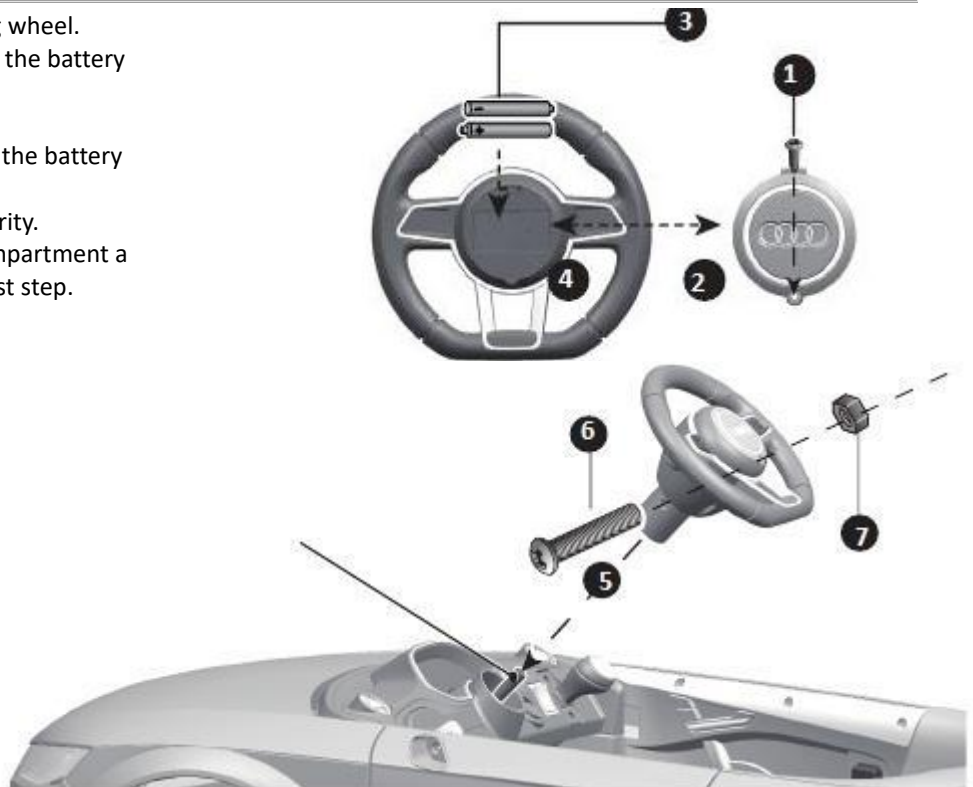
ASSEMBLY OF THE CAR - STEERING WHEEL

AA batteries must be inserted in the steering wheel.

1. Use a screwdriver to remove the screw on the battery cover in the middle of the steering wheel.
2. Remove the battery cover from the top of the battery compartment.
3. Insert two AA batteries in the correct polarity.
4. Place the battery cover on the battery compartment and fasten with the screw you removed in the first step.

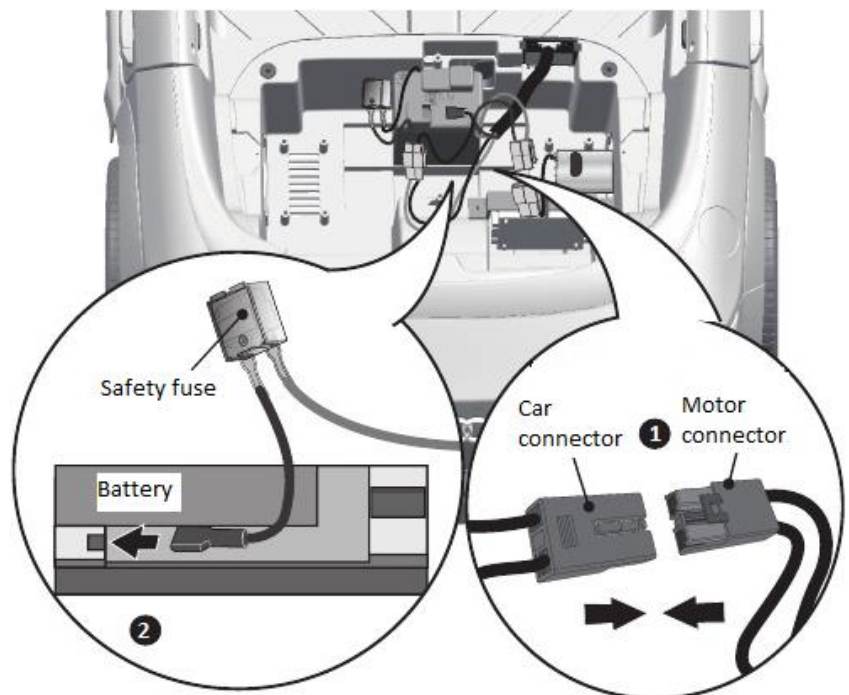
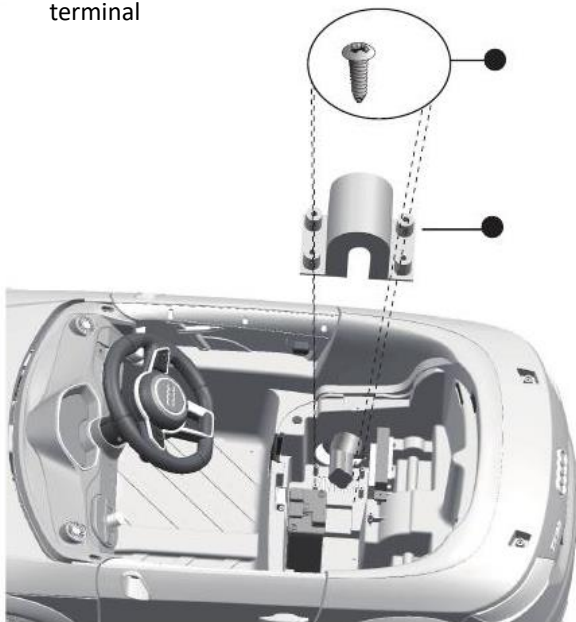
Remove the M5x35 bolt and Ø5 nut from the steering wheel.

5. Place the steering wheel over the steering rod protruding in the middle of the steering wheel base.
6. Align the holes on both sides of the steering wheel with the holes at the end of the steering rod.
7. Tighten the nut on the opposite end of the bolt to secure the steering wheel to the steering column.



CAR ASSEMBLY - POWER SUPPLY

1. Connect the vehicle connector to the engine connector as shown. On the other hand, repeat.
2. Insert the red fuse connector into the battery terminal



ASSEMBLY OF THE CAR - ENGINE COVER

1. Attach the engine cover to the engine.
2. Tighten the four Ø4x12 pan head screws and secure. Repeat the above steps for the second engine cover.

The final activities in assembling the toy car are: Fitting the seat (position and snap the seat, tighten with two M15X16 screws), windscreen snap, rear view mirrors, rear spoiler.

DASHBOARD DESCRIPTION

1. Power switch: Turns the vehicle on and off.
2. Forward / Reverse Switch: Changes the direction in which the vehicle is moving forward reverse.

To move the car forward, move the switch to the "forward" position.

To move the car backwards, set the switch to the "reverse" position.

3. Sound buttons (if included): Press to play sounds.

4. Volume control (if included): Turn the knob to the right to increase the volume; To decrease the volume, turn the knob counterclockwise.

5. Foot Pedal: Applies power (speed) to the vehicle.

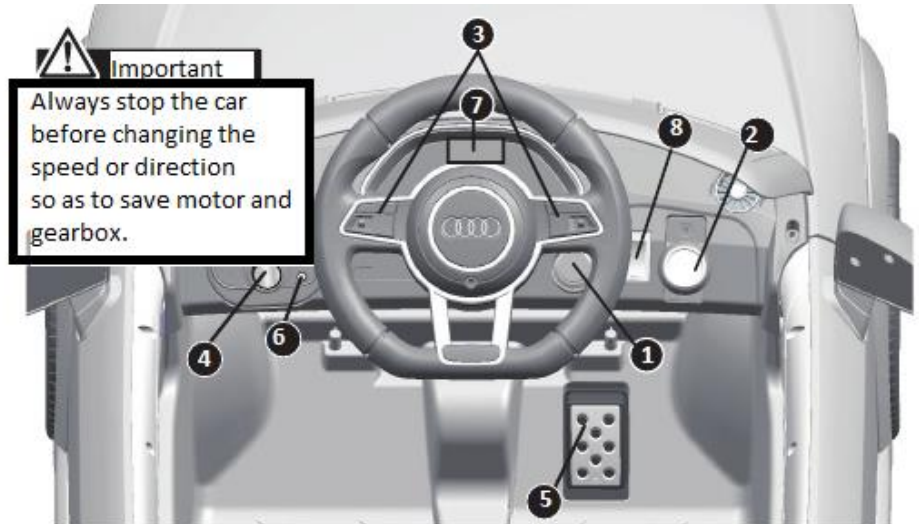
To move the car, press the pedal down.

To brake or decelerate, release the pedal.

6. Input Support (if included): Allows you to play audio from a portable music player or phone through the vehicle speakers.

7. Digital voltmeter.

8. High / low speed switch (if equipped): The switch controls the vehicle to move forward at low or high speeds.



BATTERY

Only charge the battery with the original adapter. Only charge the switched off device. Our company is not responsible for damage to the battery due to the use of non-original accessories from other manufacturers. Before using the device for the first time, please recharge the battery.

Do not use the battery in the following cases:

- 1) The battery emits considerable heat or odor
- 2) leakage of any substance / fluid.

WARNING!

- It is strictly forbidden for any other company, private person or user to manipulate the battery in any way. Do not touch any substance / liquid that leaks from the battery.
- Disconnect the charger after charging, otherwise the battery life may be shortened.
- Batteries contain hazardous substances, do not open, inhale, test, or insert or insert anything inside the battery. Use only the chargers supplied by us. Do not overload batteries or expose them to excessive discharge. Never cover the adapter while charging. It must be located in a free, airy place.
- Fully charge the battery before storing or storing to prevent the battery from completely discharging during non-use / storage / storage. The maximum storage time without recharging is 2 months.
- Do not charge the battery if the storage temperature is below 10 ° C. Move the device to a warmer environment where it is more than 10 ° C and only then charge it. We recommend covering the scooter so that it does not become dusty and make sure that the scooter is stored in a warm, dry environment.
- It is essential to recharge the device only in the presence of an adult, for the entire charging time. It is forbidden to charge the product without permanent supervision.

INSTRUCTIONS REQUIRED FOR CORRECT USE

- When storing, make sure that the device is stored in a warm, dry environment. Do not store in areas and places where there is a risk of overheating (direct sunlight, car ...). We recommend covering the device to prevent dust.
- Keep the device clean and dry. Use a damp cloth for cleaning. Avoid contact with water / liquid in any state.
- The car must not be used on wet, damp, slippery or loose surfaces.
- It is forbidden to overload the device, the maximum load is 30 kg.
- It is necessary to always take into account your surroundings when using it. Before using the product, make sure that there is no obstacle in front of or behind the vehicle.
- This car has an automatic reset fuse, if the vehicle suddenly stops while driving, it is mainly caused by overloading and subsequent tripping of the fuse. Then stop operation for about 8 seconds to allow the device to regenerate.

WARNING!

Before each ride, check the wheels, battery charge, tightening of all components and the overall condition of the car. If you find any problem, contact your dealer immediately. Do not replace or make any modifications to the device components that may fundamentally affect the operation and use of the device or even cause its destruction. Any intervention in the device will void the warranty.

IMPORTANT NOTICE

The car does not move / does not start:

1. If the switch is in the OFF position.
2. If the fuse does not work properly.
3. If the battery is not connected, check the red and black wires.
4. If the charger is connected, the vehicle will not switch on. Disconnect the charger.
5. If the pedal switch does not work properly.
6. If the wheels get stuck and can't move.

The car moves slowly:

1. If the battery is not fully charged.
2. If there is a problem with the wheels, eg the wheels are stuck and cannot move.
3. If the rider's weight exceeds the permitted parameters (ie more than 30 kg).

Before using the device, read this manual carefully and make sure you understand the information in it properly. Do not use the product if you do not agree with the instructions and instructions in this manual. Before each ride, it is necessary to check the overall condition of the equipment.

Our company is not liable for any damages that may arise as a result of improper use of the product, which is contrary to the instructions given in this manual.

Keep the proof of purchase. This document also serves as a guarantee certificate. The importer guarantees the smooth operation of the equipment for a period of 24 months from the date of purchase, subject to the conditions specified in this manual.

If the owner lends the equipment to a third party, our company is not liable for damages resulting from non-compliance with the recommendations in this manual. By any violation of this manual, the customer assumes all full responsibility for his actions. It is forbidden to lend to third parties who have not thoroughly read this manual.

TECHNICAL PARAMETERS

Name	Parameters
Color	black / white/Red Blue
Mass	14.5 kg
Dimensions	103 x 62 x 43.5 cm
Operating temperature	10-40 ° C
Battery	2 x 6 V, 4,000 mAh
Charging time	8-12 p.m.
Engine	2 x 25 W.
Material	plastic
Speed	2.5 - 5 km / h
Recommended rider age	3-8 years
Maximum rider weight	30 kg

Any use of the content of the material, including its acceptance, is prohibited without the consent of Eljet sro.

Copyright © Eljet sro

All rights reserved. Intended for personal use only. Without the prior written consent of Eljet sro, any further publication, reprinting or distribution of this material or part thereof published on the website is prohibited. www.kolonozka.cz whose www.powerguy.cz

EU DECLARATION OF CONFORMITY

EU DECLARATION OF CONFORMITY

a) Identification data of the manufacturer, authorized representative:

Trading company: **Eljet sro**

Registered office: Kladenská 278/61, 160 00 Prague 6, Czech Republic

ID: 01504134

b) Manufacturer identification data:

Trading company: **Eljet sro**

Residence: **Kladenská 278/61, 160 00 Prague 6, Czech Republic**

c) Product description:

Name: Baby carriages

Model:

Audi TT RS; BMW MINI Hatch; BMW i8 Concept; BMW i8 Coupe; Bentley EXP; Audi Q7; Audi Q8; Maserati Alfieri; Tesla Design; Bentley EXP 12; Bentley EXP; Audi R8 Spyder; BMW X6M; BMW 6GT; BMW S1000 RR; POLICE; Benz G63

Modifications: JE168

d) Reference to specifications and legislation and harmonized standards:

Directive 2014/53 / EU of the European Parliament and of the Council on the placing on the market of radio equipment.

Government Regulation No. 118/2016 Coll., On conformity assessment of electrical equipment intended for use within certain voltage limits when supplying it to the market (Directive 2014/35 / EU). Government Regulation No. 117/2016, which is equivalent to Council Directive 2014/30 / EU, Government Regulation No. 176/2008 Coll. as amended by Government Decree No. 170/2011 Coll., which is equivalent to Council Directive No. 2006/42 / EC as amended by Council Directives 2009/127 / EC and 2012/32 / EU, Government Decree No. 481/2012 Coll. which is equivalent to Council Directive No. 2011/65 / EU, Government Regulation No. 426/2016 Coll. which is equivalent to Council Directive No. 2014 / 53EU, ČSN EN ISO 12100, ČSN EN 60950-1 ed. 2, ČSN EN 61000-6-3 ed. 2, ČSN EN 55014-1 ed. 3, ČSN EN ISO 13849-1

e) Description and determination of the product function:

Baby carriages are powered by two electric motors powered by a 12V battery. A charger (12V1000 Ma) is a part of children's carts. Modifications differ in some technical parameters, design. The design principle and the elements used are identical.

The two digits of the year in which the specified product was CE marked: 16

This EU declaration of conformity was issued under the sole responsibility of the manufacturer - authorized representative.

Tomáš Brepta, CEO

V Praze

dňa 1.10.2018

Podpis.....

Eljet s.r.o.
Kladenská 278/61
160 00 Praha 6
IČ: 01504134, DIČ: CZ01504134