

# HEINNER

## TRADITIONAL COOKER HOOD

Model: CH-400-BRW/ CH-400-BK



- Traditional cooker hood
- Suction power: 326.4 m<sup>3</sup>/h
- Color: black/ brown

Thank you for purchasing this product!

## I. INTRODUCTION

***Before using the appliance, please read carefully this instruction manual and keep it for future reference.***

This instruction manual is designed to provide you with all required instructions related to the installation, use and maintenance of the appliance.

In order to operate the unit correctly and safely, please read this instruction manual carefully before installation and usage.

## III. SAFETY PRECAUTIONS

## II. CONTENT OF YOUR PACKAGE

- Traditional cooker hood
- User manual
- Warranty card



**If this product has arrived damaged please return for change or repair.**

**DO NOT INSTALL THIS APPLIANCE IF YOU FOUND IT DAMAGED.**

Children should be supervised to ensure that they do not play with the appliance.

This appliance is designed for domestic use only.

Any installation work must be carried out by a qualified electrician or competent person.

There is a fire risk if cleaning is not carried out in accordance with the instructions.

Details concerning the method and frequency of cleaning are stated in the section .  
"INSTALLATION AND MAINTENANCE".

Do not pull on the connection cord, but rather on the plug, to separate the appliance from the mains.

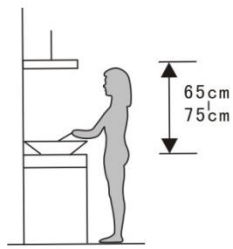
When cleaning the appliance, it must be off power first.

## IV. INSTALATION

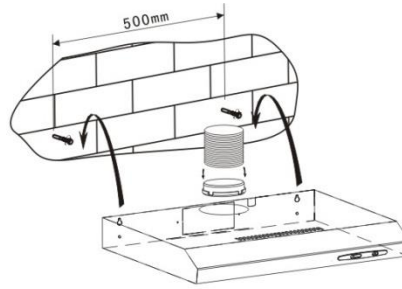
### INSTALATION

#### Method A

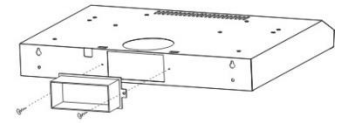
1. The cooker hoods should be placed at a distance of 65-75cm from the cooking surface for best effect.
2. To install onto the wall, drill 4 holes of  $\varnothing$  8mm on a suitable place according with the center distance of hole in the back of the cooker hood.
3. Insert the nut into the holes.
4. Insert the screws into the nuts and tight
5. Put up the cooker hood onto the fixed screws
6. Then use the attached accessories enclosed to turn the screws into the two holes of inside the hood, and then fix the screws to tighten the hood onto the wall.
7. Put the one way valve onto the cooker hood.



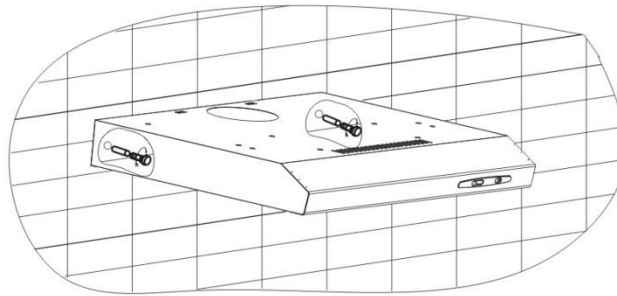
Pic 1



Pic 2



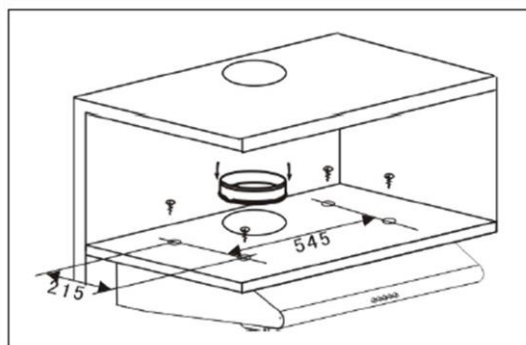
Pic 3



Pic 4

### Method B

- 1) Drill 4 holes of  $\varnothing$  6mm at the bottom of the hanging Cup board.
- 2) Put the one way valve on the cooker hood, then install the cooker hood on the bottom of the cupboard, tighten the hood with enclosed 6 screws.
- 3) Install the adjusted board on the bottom of the hood in order to keep out the gap between hood back and cupboard.

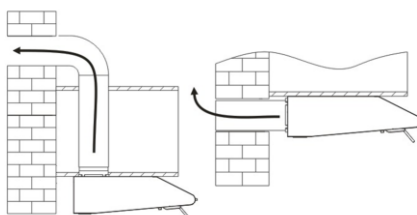
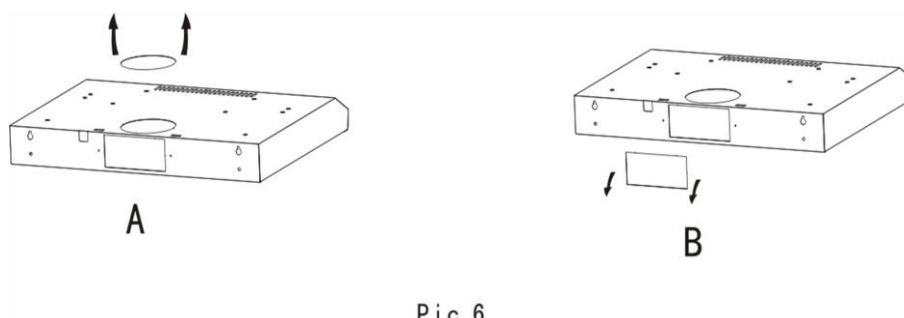


**Notice**

There are 2 methods for ventilation, including 'horizontal ventilation' and 'vertical ventilation'. Please pay attention to the ventilation method when installation.

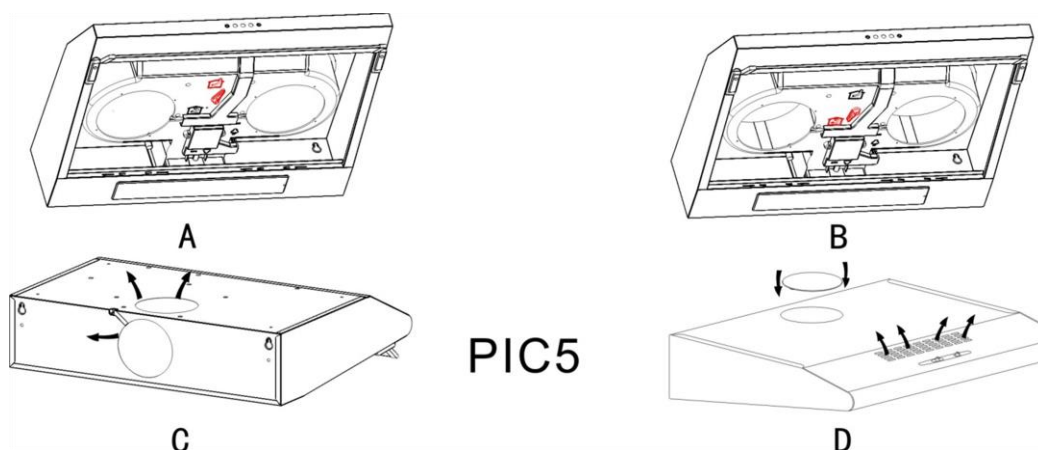
**Horizontal ventilation:** As shown in pic. 4A, please use the cover to seal the outlet on the top, then the air can be vented from back.

**Vertical ventilation:** As shown in pic 4B, please use the cover to seal the outlet on the back, then the air can be vented from top.

**Air ventilation setting**

**Outdoor air ventilation:** Turn the adjuster to outdoor position (pic.5A), install the outlet, turn on the cooker hood, then the air will be vented from the outside outlet.

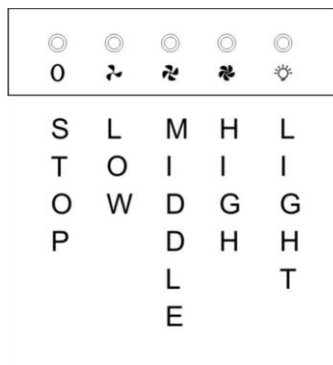
**Indoor air ventilation:** Turn the adjuster to indoor position (pic.5B), install the outlet cover, turn on the cooker hood, then the air can be vented from the inside outlet.



## V. OPERATION

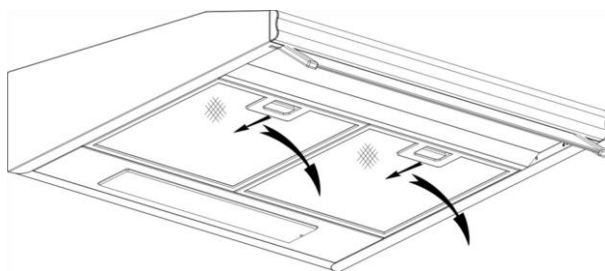
The switch is operated as below (see pic. 6):

1. Press "0", the motor will be off.
2. Press the button to "low", "middle" and "high", the motor will be turned on at "low", "middle" and "high" speed respectively.
3. Press "light", the light will be on. Press it again, the light will be off.



## VI. CLEANING AND MAINTENANCE

### Changing and cleaning the filter



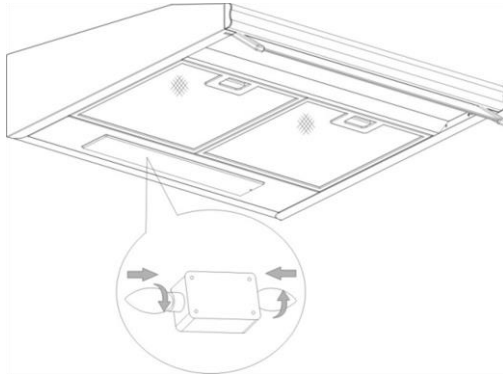
1. Put the filter into the water of 40-50°C, put some detergent in, and leave it for 2-3 minutes. Then use the soft brush to clean it with proper strength, in order not to damage the filter.

2. The filter can be cleaned by dish washer. Put the filter into the dish washer and put some detergent in, then turn the temperature to 60°C.

All the filters are made of metal. Please do not use any corrosive detergent when cleaning.

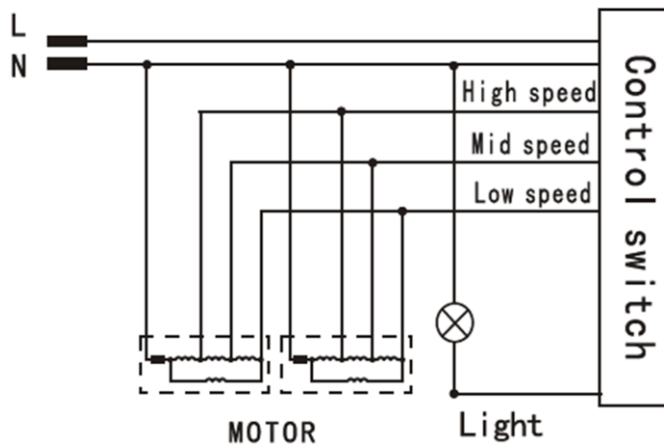
Notice: Please unplug before cleaning.

### Changing the light



- \*Before changing the lights, make sure that the appliance is plugged off.
- \*Open the filter, see beside picture.
- \*Change the bulb with Max. 2W LED bulb.
- \*Replace the filter to the original position.

**AC 220-240V/50Hz**



## VIII. TECHNICAL FICHE

<b>Suction power:</b>	326.4 m <sup>3</sup> /h
<b>Motor</b>	2x60W
<b>Color:</b>	White/ black/ brown/ inox

**Environment friendly disposal**

You can help protect the environment!

Please remember to respect the local regulations: hand in the non-working electrical equipment's to an appropriate waste disposal center.



**HEINNER** is a registered trademark of **Network One Distribution SRL**. Other brands and product names are trademarks or registered trademarks of their respective holders.

No part of the specifications may be reproduced in any form or by any means or used to make any derivative such as translation, transformation, or adaptation without permission from NETWORK ONE DISTRIBUTION.

Copyright © 2013 Network One Distribution. All rights reserved.

[www.heinner.com](http://www.heinner.com), <http://www.nod.ro>



This product is in conformity with norms and standards of European Community

Importer: **Network One Distribution**

Marcel Iancu Street, no 3-5, Bucharest, Romania

Tel: +40 21 211 18 56, [www.heinner.com](http://www.heinner.com) , [www.nod.ro](http://www.nod.ro)



<b>Product fiche</b>	
Trademark	Heinner
Model	CH-400-BK, CH-400-BRW
Annual energy consumption (kWh/year)	56.6
Energy efficiency class	C
Fluid dynamic efficiency	11.6
Fluid dynamic efficiency class	E
Lighting efficiency (lux/W)	35.5
Lighting efficiency class	A
Grease filtering efficiency (%)	75.6
Grease filtering efficiency class	C
Airflow at minimum and maximum speed under normal conditions of use (m <sup>3</sup> /h)	151.9/326.4
Airborne acoustical A-weighted sound power emissions at minimum and maximum speed under normal conditions of use (dB(A))	56/71
Power consumption in standby mode (W)	-
Power consumption in off mode (W)	0