

SIGURO

Washing Machine

Washing Machine

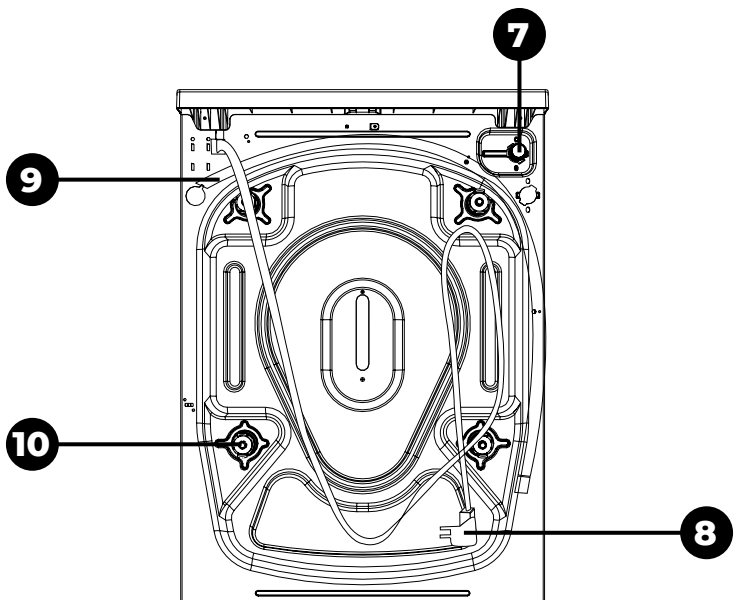
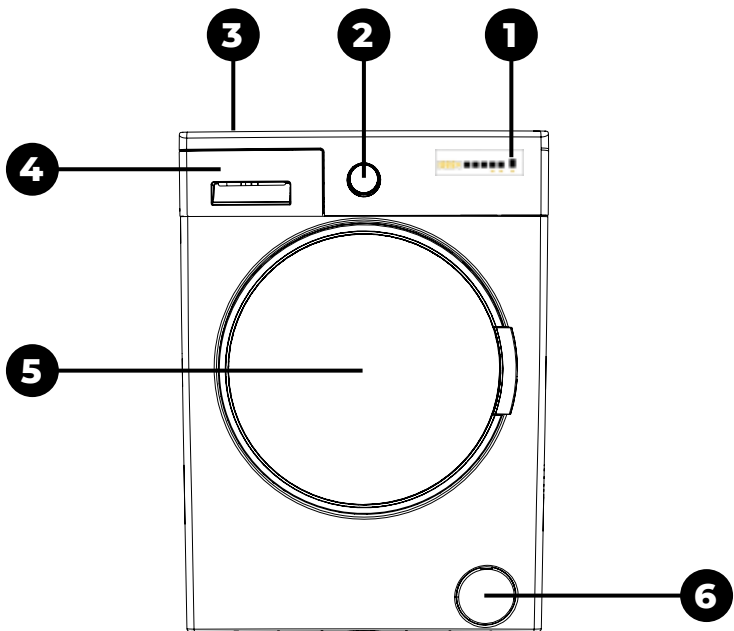


EN Translation of the operating instructions from the original language.

SGR-WM-F911W

SIGURO

ENGLISH	4
Safety information	4
Installation	9
Control panel overview	11
Using the washing machine	16
Additional functions	18
Table of programmes	21
Cleaning and maintenance	25
Problem solving	28



Thank you for purchasing a SIGURO appliance. We are grateful for your trust and it is our pleasure to introduce the device on the following pages and to acquaint you with all its functions and uses.

We believe in a fair and responsible company and therefore we only work with suppliers who meet our strict criteria for protecting the interests of employees, preventing their abuse and provide fair working conditions.

If you need help with extensive maintenance or repair of the product, which requires intervention in its internal parts, our authorized service is available at the email address siguro@alza.cz, or the operators at the seller's info line. We have unified these contact points for your convenience in solving any problems with the products and the above contacts can be used in the event of any complaints or post-warranty service.

SAFETY INFORMATION



Please read this manual carefully before use and keep it for future reference.

1. Do not place the washing machine on a carpet or pad that would prevent ventilation of the base.
2. This appliance must not be used by persons (including children) with limited physical, sensory or mental abilities, or persons with limited experience and knowledge, unless they are under the supervision of a responsible person or have been instructed in the correct and safe use of the appliance and understand the possible risks involved.
3. Children under 3 years of age must only be near the appliance if they are supervised at all times.
4. If the power cord is damaged, contact your nearest authorized service center for replacement.
5. When connecting the water supply to your washing machine, only use the new water supply hose that comes with the washing machine. Never use old, used or damaged supply hoses.
6. Children must not play with the appliance. Cleaning and maintenance must not be carried out by children without adult supervision.
7. Please read these instructions carefully.
8. The washing machine is intended for domestic use only. Commercial use will void the warranty.
9. This manual has been created for multiple models, so your appliance may not have some of the features described. For this reason, it is important to pay particular attention to all pictures when reading the instructions for use.
10. The ambient temperature required for your washing machine to operate is 15 - 25 °C.
11. If the temperature drops below 0 °C, the hoses may burst or the

electronic card may not work properly.

12. Make sure the laundry loaded into the washing machine is free of foreign objects such as nails, needles, lighters and coins.
13. It is recommended that you select the 90° Cotton programme for your first wash without laundry and fill half of the detergent compartment II with a suitable detergent.
14. Dirt can accumulate on detergent and softeners exposed to air for long periods of time.
Only put softener or detergent in the compartment at the beginning of each wash.
15. If you will not be using the washing machine for a long time, disconnect it from the mains and turn off the water supply. We also recommend leaving the door open to prevent moisture from accumulating inside the washing machine.
16. Due to quality control during production, some water may remain in the washing machine. This will not affect the operation of the washing machine.
17. The packaging of the appliance may be dangerous for children. Do not let children play with packaging or small parts from the washing machine.
18. Store the packaging in a place where children cannot reach it or dispose of it in an appropriate way.
19. Use pre-rinse programmes only on very dirty laundry. Never open the detergent compartment when the appliance is in use.
20. In the event of a fault, disconnect the appliance from the mains and turn off the water supply. Do not attempt any repairs. Always contact an authorised service technician.
21. Do not exceed the maximum load of the washing programme you have selected.
Never open the door when the washing machine is running.
22. Washing clothes soiled with flour can damage your washing machine.
23. Follow the manufacturer's instructions for using fabric softener or similar products in your washing machine.
24. Make sure your washing machine door is not blocked and can be opened fully.
25. Install the appliance in a place that can be fully ventilated and where there is, if possible, a constant flow of air.
26. Read these warnings. Follow the instructions in this manual to protect yourself and others from hazards and fatal injuries.
27. **RISK OF BURNS:** Do not touch the drain hose or the drained water while the washing machine is running. High temperatures pose a risk of burns.
28. Do not connect the washing machine to the mains using an extension cable.
29. Do not insert a damaged plug into the socket.
30. Never pull the plug out of the socket by pulling the cord. Always pull the plug.
31. Never touch the power cord/plug with wet hands as this could cause a short circuit or electric shock.

32. Do not touch the washing machine if your hands or feet are wet.
33. A damaged power cord/plug can cause fire or electric shock. Only qualified personnel may replace a damaged power cable.
34. Check the water flow rate before placing the drain hose in the sink.
35. Take the necessary precautions to prevent the hose from slipping.
36. The water flow can loosen the hose if it is not properly secured. Make sure that the drain hole in the sink is not blocked by the stopper.
37. Do not store flammable liquids in the appliance.
38. The sulphur content of paint strippers can cause corrosion. Never use paint removers in the washing machine.
39. Never use products that contain solvents.
40. Make sure the laundry loaded into the washing machine is free of foreign objects such as nails, needles, lighters and coins.
41. Don't climb on the washing machine.
42. Make sure that the hoses and cables do not cause a tripping hazard.
43. Do not turn the washing machine upside down or sideways.
44. Do not lift the washing machine by the door or detergent compartment.
45. The appliance must be transported by at least 2 persons.
46. Do not leave children unsupervised near the appliance. Children could become trapped in the appliance, which could lead to a risk of death.
47. Do not allow children to touch the glass door when the appliance is in use. The surface becomes extremely hot and can cause skin damage.
48. Keep the packaging material out of the reach of children.
49. Poisoning and irritation may occur if detergents and cleaning agents are consumed or come into contact with the skin. Keep cleaning materials out of the reach of children.
50. Keep pets well away from the washing machine.
51. Before installation, check the packaging of the washing machine and, once unpacked, its external surface. Do not use the washing machine if it appears damaged or if the packaging has been damaged.
52. Only an authorised service technician may install the washing machine. Installation of the appliance by another person may void the warranty.
53. This appliance may be used by children over 8 years of age and persons with reduced physical, sensory or mental abilities or with insufficient experience and knowledge only if they are under the supervision of a responsible person or if they have been instructed in the correct and safe use of the appliance and understand the possible risks involved. Children must not play with the appliance. Cleaning and maintenance must not be carried out by children without adult supervision.
54. Only use the washing machine to wash laundry that has been marked by the manufacturer as suitable for machine washing.
55. Remove the 4 transport screws and rubber washers from the rear of the washing machine before putting it into operation. If the screws are not removed, they can cause severe vibration, noise and malfunctioning of the washing machine and may void the warranty.
56. The warranty does not cover damage caused by external factors such as fire, flood and other sources of damage.
57. Do not throw this manual away, keep it for future reference and pass it

on to the next owner.

58. **NOTE:** Specifications may vary depending on the product purchased.

59. The belt may only be replaced by an authorised workshop.

60. Use only the original replacement belt.

Removal of packaging

The packaging materials protect the washing machine from any damage that may occur during transport. Packaging materials are environmentally friendly because they are recyclable. The use of recycled material reduces the consumption of raw material and reduces waste production.

Information on savings

Some important information to get the most out of your washing machine:

- Do not exceed the maximum load of the washing programme you have selected. This will allow your washing machine to run in economy mode.
- Do not use the prewash function for lightly soiled laundry. This will help you reduce your electricity and water consumption.

- 1 Electronic display
- 2 Program selector
- 3 Top cover
- 4 Detergent compartment
- 5 Drum
- 6 Pump filter cover
- 7 Filling valve
- 8 Power cord
- 9 Drain hose
- 10 Transport screws

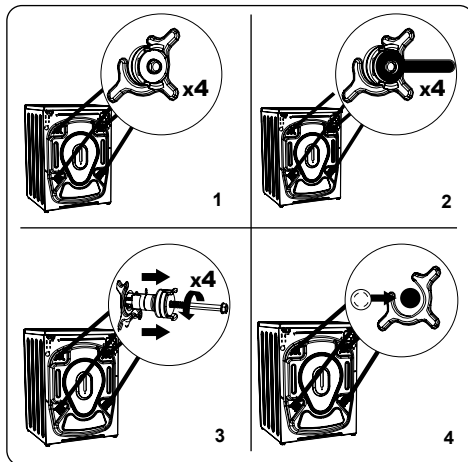


Operating voltage/frequency	220 - 240 VAC/ 50 Hz
Total current (A)	10
Water pressure (Mpa)	Maximum 1 MPa / Minimum 0.1 MPa
Total power (W)	2200
Maximum load capacity (dry clothes) (kg)	9
Speed (RPM)	1400
Number of programmes	15
Dimensions (mm) H × W × D	845 × 597 × 582

INSTALLATION

Removing the transport screws

1. Remove the 4 transport screws and rubber washers from the rear of the washing machine before putting it into operation. If the screws are not removed, they can cause severe vibration, noise and malfunctioning of the washing machine and may void the warranty.
2. Loosen the carriage bolts by turning counterclockwise with a suitable spanner.
3. Remove the transport screws by pulling them out directly.
4. Insert the plastic plugs supplied in the accessory bag into the holes left after removing the shipping screws. The shipping screws should be stored for future use.

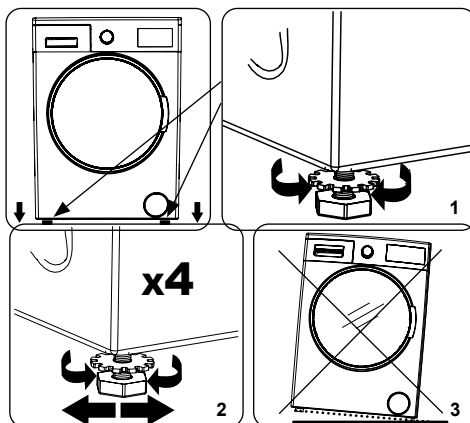


Note:

Remove the transport screws before using the washing machine for the first time. Failures caused by operating the washing machine with the transport screws fitted are not covered by the warranty.

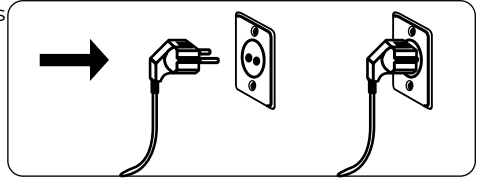
Adjustment of levelling feet / adjustment of adjustable stops

1. Do not install the washing machine on a surface (e.g. carpet) that prevents ventilation from below.
 - To ensure quiet, vibration-free operation, install it on a solid surface. You can level the washing machine with the adjustable feet.
 - Loosen the plastic lock nut.
2. To raise the height of the washing machine, turn the feet clockwise. To lower the height of the washing machine, turn the feet counterclockwise.
 - Once the washing machine is in a horizontal position, tighten the locknuts by turning clockwise.
3. Never line the washing machine with cardboard, wood or other similar materials.
 - When sweeping and mopping the floor on which the washing machine is placed, take care not to disturb the horizontal position of the washing machine.



Electrical wiring

- The washing machine requires a mains power supply of 220 -240 V, 50 Hz.
- The power cord of your washing machine is equipped with a grounded plug. This plug should always be plugged into a grounded 10 A socket.
- If you do not have a suitable socket and a grounded fuse, contact a qualified electrician.
- We are not liable for any damage caused by connecting the appliance to an ungrounded socket.

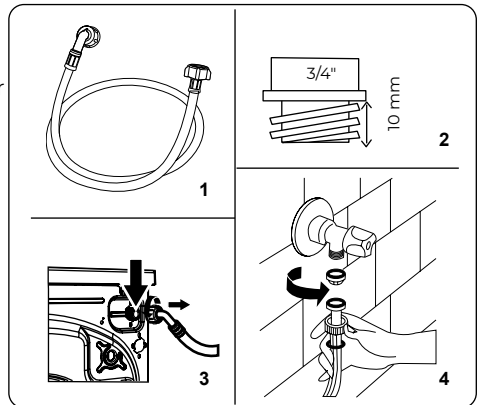


Note:

Operating the washing machine at low voltage leads to shortened life and reduced performance

Hose for water supply

1. Depending on the specifications of the washing machine, your washing machine may be connected to a cold water supply or to a cold and hot water supply. The white capped hose should be connected to the cold water supply and the red capped hose to the hot water supply (if available).
 - To prevent water leaking into the joints, 1 or 2 nuts are supplied with the hose (depending on the model of your washing machine). Place these nuts on the end of the supply hose that connects to the water supply.
2. Connect the new supply hoses to the $\frac{3}{4}$ thread tap.

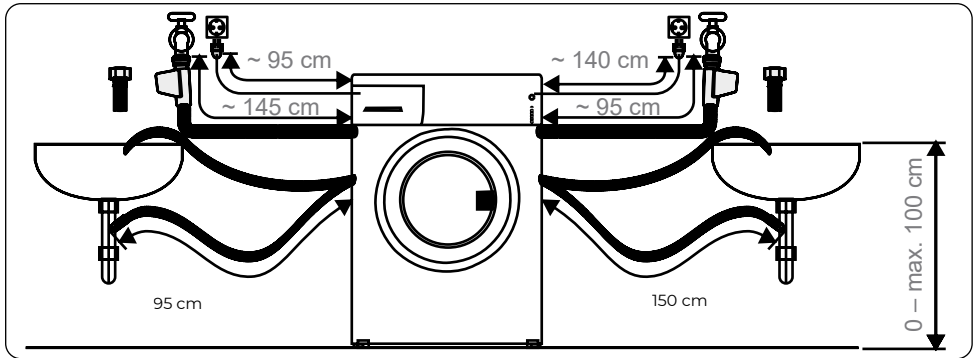


- Connect the white end of the supply hose to the white inlet valve on the back of the washing machine and the red end of the hose to the red inlet valve (if used).
 - Tighten the joints by hand. If in doubt, contact a qualified plumber.
 - A water flow with a pressure of 0.1 - 1 MPa will allow your washing machine to operate at optimum efficiency (a pressure of 0.1 MPa means that more than 8 litres of water per minute will flow through a fully open tap).
3. Once you have made all the connections, turn on the water supply and carefully check for leaks.
 4. Ensure that the new water supply hoses are not pinched, kinked, twisted, kinked or kinked.
 - If your washing machine is connected to a hot water supply, the temperature of the hot water supply should not exceed 70 °C.



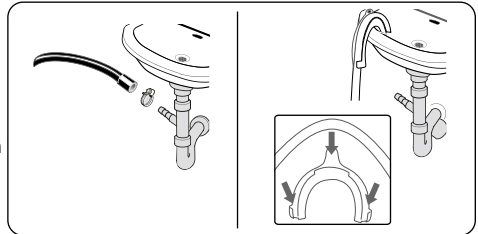
Note:

The washing machine must only be connected to the water supply using the new supply hose supplied. Old hoses must not be reused.



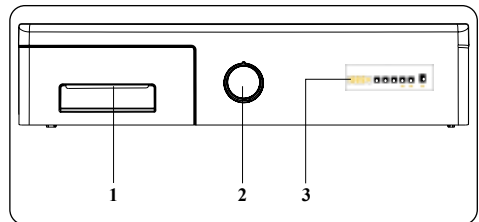
Water drain connection

- Connect the drain hose to the stand or to the outlet elbow at the sink using additional equipment.
- Never attempt to extend the drain hose.
- Do not put the washing machine drain hose in a container, bucket or tub.
- Make sure that the drain hose is not bent, kinked, kinked or extended.
- The discharge hose must not be more than 100 cm from the ground.



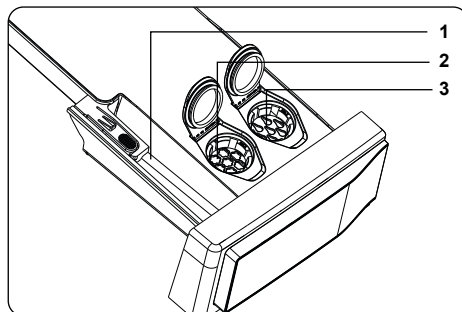
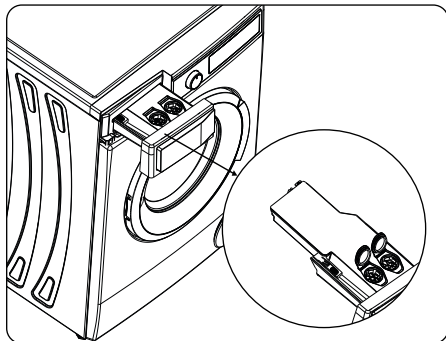
CONTROL PANEL OVERVIEW

1. Detergent compartment
2. Program selector
3. Electronic display



Detergent compartment

1. Powder detergent container
2. Softener (Auto Dosing) container
3. Liquid detergent (Auto Dosing) container



Powder detergent compartment:

If you want to use powder detergent for the washing cycle, please deactivate the auto dosing function and use the powder detergent compartment.

Fabric softener, fabric starch, detergent dispenser:

Only substances such as fabric softener can be used on this dispenser (follow the amount and type as recommended by the manufacturer). Fabric softener used for laundry can remain on this dispenser sometimes. This is because the fabric softener is not a fluid substance. It is recommended that you use liquid fabric softeners having less viscosity or use the softener after diluting.

If you do not wish to use the softener compartment, you should deactivate the softener selection.

- When you first press the softener dosage key, **Auto** will be shown on the LED display respectively, indicating that the softener function is active.



Note:

The softener dosage function is enabled when you switch on the machine.

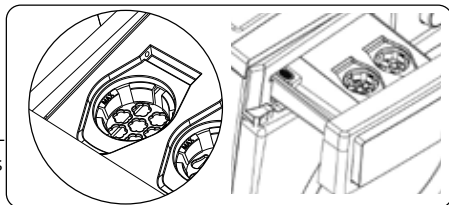
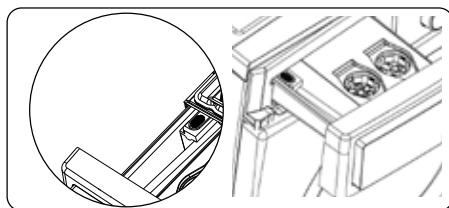
- If you press the softener dosage key for the second time consecutively, the softener function will be disabled. Use of softener will be cancelled for the washing cycle.

If you want to use the softener function:

- If you press the softener dosage key 3 times consecutively, the softener LED **L3** appears on the LED display, indicating that the softener function is enabled.

Softener level indicators:

- **L3** high level
- **L2** medium level
- **L1** low level



- After enabling the softener function, each press on the softener dosage key will allow you to select level 3, level 2, level 1 and **Auto** respectively.

**Note:**

Level selection for softener should be made before the program starts; you cannot select a softener level after the program has started.

**Warning:**

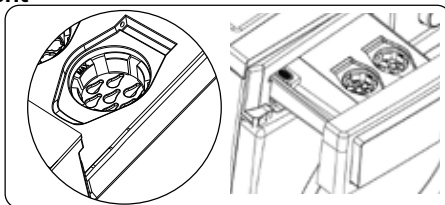
When the softener level is low, the softener LED will blink and your machine will give a warning.

Liquid detergent (auto dosing) compartment

Use of liquid detergent (auto dosing) is activated on your machine by default. Only liquid detergent can be used in this compartment.

If you want to use the powder detergent compartment, you should deactivate the liquid detergent (auto dosing) function.

- When you first press the detergent dosage key, **Auto** will be shown on the LED display respectively, indicating that the liquid detergent (auto dosing) function is active.

**Note:**

The auto dosing function is enabled when you switch on the machine.

- If you press the detergent dosage key for the second time consecutively, the liquid detergent (auto dosing) function will be disabled. You can use powder detergent in the washing cycle.

**Note:**

When the liquid detergent (auto dosing) function is disabled, you need to use powder detergent for washing cycles. To do this, you should put detergent in the powder detergent compartment.

If you want to use liquid detergent (auto dosing) for the washing cycle,

- If you press the detergent dosage key 3 times consecutively, **L3** appears on the LED display, indicating that the liquid detergent (auto dosing) function is enabled.

Liquid Detergent level indicators

- **L3** high level
- **L2** medium level
- **L1** low level
- After enabling the liquid detergent (auto dosing) function, each press on the detergent dosage key will allow you to select level 3, level 2, level 1 and **Auto** respectively.

**Note:**

Liquid detergent (auto dosing) level should be selected according to the soiling level of the laundry.

**Note:**

The liquid detergent (auto dosing) selection should be made before the program starts; you cannot select this function after the program has started.

**Warning:**

When the detergent level is low, the LED under the detergent dosage key will blink and your machine will give a warning.

Warnings for the Automatic Detergent Dosing System Information regarding detergent use

1. Do not mix detergents from different brands.
2. Do not mix detergent and softener.
3. When changing detergent, make sure you clean the reservoirs of the detergent drawer.
4. Do not use any detergent that has a layer on it or that has started to solidify.
5. Do not use bleach or products containing solvents.
6. When using concentrated detergent, dilute it with some water to prevent the drawer reservoirs from blocking.

When the product is running:

1. Do not leave the reservoir lids open to prevent the detergent inside from drying.
2. After adding the detergent or when the product is running, make sure that the drawer is properly closed. Otherwise, the product may not be able to use the detergent properly.

**Warning:**

The drawer should not be open while the product is running.

Detergent drawer

1. When you remove the drawer, make sure that it is empty. Otherwise, you may pour the detergent in it.
2. When the detergent drawer is full:
 - Do not pull the machine.
 - Do not move the machine.
 - Do not lean or tilt the machine.

**Warning:**

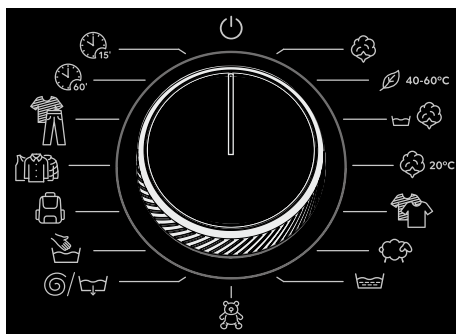
Before doing these processes, make sure you remove the detergent drawer from the machine.

**Warning:**

If you added detergent but the machine still does not detect it, there may be dried detergent inside the reservoir, preventing the detergent dosing mechanism from functioning properly. Clean the drawer.

Program selector

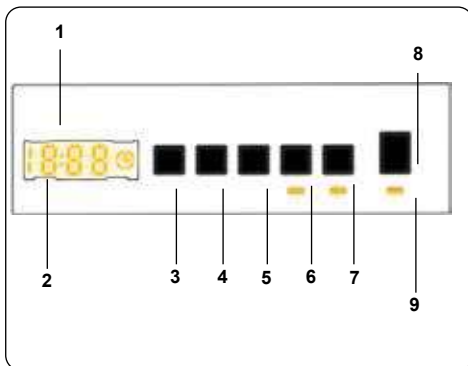
- To select the desired program, turn the program selector clockwise or counterclockwise until the mark on the program selector points to the selected program.
- Check that the programme selector is exactly on the programme you want to select.



Electronic display

1. Electronic display
2. Digital display
3. Water temperature adjustment button
4. RPM Speed adjustment button
5. Steam assist delayed start additional function
6. Additional function button 1
7. Additional function button 2
8. Start/Pause button
9. Start/Pause button indicator light

The display will show the delayed start timer (if set), the set temperature and spin speed during wringing and any other selected functions. When the selected program is completed, "End " will appear on the display. The display also shows whether the washing machine has malfunctioned.



USING THE WASHING MACHINE

- Follow the instructions on the labels on the garment. Divide the laundry by type (cotton, synthetic, delicate, wool, etc.), washing temperature (cold, 30°, 40°, 60°, 90°) and degree of soiling (lightly soiled, soiled, heavily soiled).
- Never wash coloured and white linen together. Dark fabrics may contain excess dye and should be washed several times separately.
- Make sure there are no metal objects on the laundry or in the pockets; if there are, remove them.

Warning:

The warranty does not cover malfunctions caused by damage caused by foreign material.

- Fasten the zippers, all hooks and eyes.
- Remove the metal or plastic curtain hooks or put them in a washing net or bag.
- Turn fabrics such as trousers, knitwear, T-shirts and sweatshirts inside out.
- Wash socks, handkerchiefs and other small linen in a protective net.


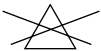

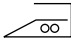
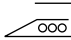



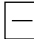


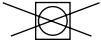



Loading laundry into the washing machine

Open the washing machine door.

Spread the laundry evenly in the washing machine. Be careful not to exceed the maximum drum load, as this will lead to poor washing results and wrinkled laundry. For information on the capacity of the washing machine, please refer to the washing programme table.

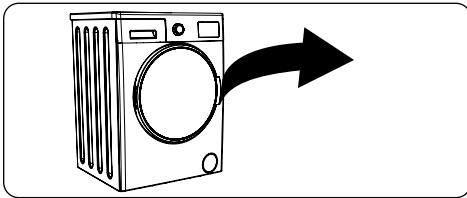
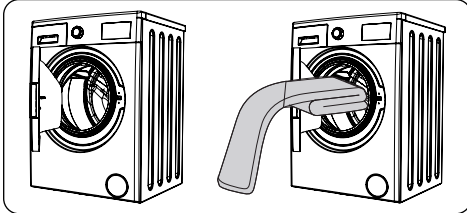
The following table shows the approximate weight of common types of laundry:

TYPE OF WORK	WEIGHT (g)
Towel	200
Linen included	500
Mayor	1200
Blanket	700
Pillowcase	200
Underwear	100

 It can be bleached	 Do not bleach	 Normal washing
 Maximum ironing temperature 150 °C	 Maximum ironing temperature 200 °C	 Don't iron
 Can be chemically cleaned	 Cannot be chemically cleaned	 Dry laid
 Non-Flammable	 Dry hung	 Do not dry in the dryer
 Chemical cleaning in gas oil, pure alcohol and R113 is permitted	 Perchloroethylene R11, R13, crude oil	 Perchloroethylene R11, R113, gas oil

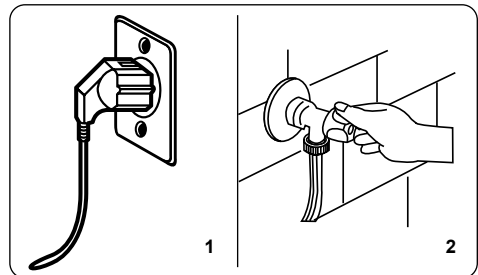
Tablecloth	250
------------	-----

- Load each piece of laundry separately.
- Check that no objects are trapped between the rubber seal and the door.
- Push gently on the door until it clicks shut. Make sure the door is fully closed, otherwise the programme will not start.



Operating the washing machine

1. Plug the washing machine into the mains.
 - Open the washing machine door.
 - Spread the laundry evenly in the washing machine.
 - Push gently on the door until it clicks shut.



Programme selection

Use the programme chart to select the most suitable programme for your laundry.

Half-fill detection system

Your washing machine has a half-load detection function.

If you put less than half the maximum amount of laundry in the machine, it will automatically set the half-load function, regardless of the programme selected. This means that it takes less time to complete the selected programme and less water and energy is used.

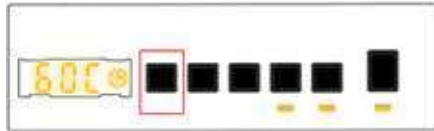
ADDITIONAL FUNCTIONS

Temperature selection

Use the water temperature setting button to change the automatically programmed water temperature.

After selecting a program, the maximum temperature for that program is automatically set. To change the temperature, press the button to adjust the water temperature until the digital display shows the desired temperature.

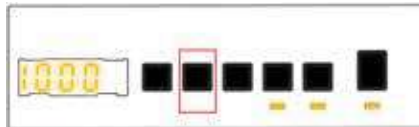
You can gradually reduce the water temperature between the maximum water temperature of the selected programme and the cold wash (- - C) by simply pressing the temperature setting button.



Speed selection for wringing

Once the programme is selected, the maximum wringing speed is automatically set. To change the wringing speed from maximum speed to no wringing (- -), press the Wring Speed button until the desired speed is displayed.

If you have skipped the desired spin speed when wringing, press the button repeatedly to adjust the wringing speed until the desired speed is displayed again.



Delayed start timer

You can use this additional function to delay the start of the wash cycle by 1 to 23 hours.

Using the delayed start function:

- Press the delayed start button once.
- The message "01h" is displayed. The delayed start icon lights up on the electronic display.
- Press the delayed start button until you reach the time you want the washing machine to start the cycle.
- If you have skipped the desired delayed start time, press the button repeatedly to set the delayed start until the desired time appears on the display again.
- To use the delayed start function, you must press the Start/Pause button to start the washing machine.



To cancel the delayed start function:

- If you have pressed the Start/Pause button to start the washing machine, just press the delayed start button once. The symbol on the display will go out.
- If you have not pressed the Start/Pause button, press the delayed start button continuously until the symbol on the display goes out. The symbol on the display will go out.

**Note:**

If you wish to select an additional function, if the LED for the additional function does not light up, this means that this function cannot be used in the selected work program.

Steam assistant (*)

Thanks to the application of steam, you can wash your clothes with less wrinkling after washing. The steam penetrates and loosens clothes, eliminating wrinkles and leaving our clothes soft and gentle.

**Detergent Dosage Selection (*)**

Auxiliary function button 4 Detergent Dosage Selection.

This auxiliary function allows you to enable or disable auto dosage and to adjust the amount of liquid detergent according to the soiling level of the laundry you put in your washing machine.

**Softener Dosage Selection (*)**

Auxiliary function button 5 Softener Dosage Selection.

This auxiliary function allows you to enable or disable auto dosage and adjust softener levels.

*For use of this auxiliary function, please see the descriptions under Section.

**Start/Pause button**

Press the Start/Pause button to start the selected programme or pause a running programme. If you switch the washing machine to standby mode, the Start/Pause light will flash on the display.

**Child lock**

The Child Lock function allows you to lock the buttons so that the selected wash cycle cannot be inadvertently changed.

To activate the child lock, press and hold buttons 2 and 3 simultaneously for at least 3 seconds. When the child lock is activated, "CL" flashes on the electronic display for 2 seconds.

If you press any button or change the selected program using the program selector when the child lock is active, the "CL" symbol will flash on the electronic display for 2 seconds.

If the washing machine is already washing, the child lock is active and you try to change the programme by turning the programme selector to CANCEL and then to the desired programme, the washing machine will continue to wash unchanged.

To deactivate the child lock, press and hold buttons 2 and 3 simultaneously for at least



3 seconds until the "CL" symbol disappears from the display.

Cancellation of the programme

The selected programme can be cancelled at any time:

1. Switch the programme selector to the "STOP" position.
2. The washing machine stops the cycle and the programme is cancelled.
3. Turn the PROGRAMME selector to any other programme to drain the water from the washing machine.
4. Your washing machine will perform the necessary drainage and cancel the programme.
5. You can now select and run the new program.



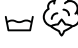





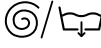

End of programme






Your washing machine will stop itself when the selected programme is finished.

- The message "END" will flash on the display.
- You can open the washing machine door and take out the clothes.
- Leave the door open to allow the inside of the washing machine to dry.
- Switch the programme selector to the "STOP" position.
- Disconnect the washing machine from the mains.
- Turn off the water supply.



TABLE OF PROGRAMMES

Program	Symbol	Washing temperature (°C)	Maximum dry laundry capacity (kg)	Drawer for washing powder	Programme duration (min.)	Type of laundry / Descriptions
COTTON		*60-90-80-70-40	9.0	2	145	Very dirty, cotton and linen. (Underwear, bed linen, tablecloths, towels (max. 4.5 kg) etc.)
ECO 40-60	 40-60°C	*40 - 60	9.0	2	228	Dirty cotton and linen textiles. (Underwear, bed linen, tablecloths, towels (max. 4.5 kg) etc.)
Pre-wash - Cotton		*60 - 50 - 40 - 30 - "- -C"	9.0	1 a 2	164	Dirty cotton and linen textiles. (Underwear, bed linen, tablecloths, towels (max. 4.5 kg) etc.)
COTTON 20°C		*20- "- -C"	4.5	2	59	Less dirty cotton and linen textiles. (Underwear, bed linen, tablecloths, towels (max. 2.0 kg), bed linen, etc.)
Coloured Linen		*40 - 30 - "- -C"	9.0	2	130	Less dirty cotton and linen textiles. (Underwear, bed linen, tablecloths, towels (max. 4.5 kg), bed linen, etc.)
WOOL		*30 - "- -C"	2.5	2	57	Woolen underwear with product labels.
SOAKING		*"- -C"	9.0	-	30	Further soaking of any type of laundry after washing.
Antiallergic		*60 - 50 - 40 - 30 - "- -C"	4.0	2	215	Children's underwear
Centrifuging/Discharging		*"- -C"	9.0	-	17	Further wringing of any type of laundry after washing.
HAND WASHING		*30 - "- -C"	2.5	2	100	Laundry for which hand washing or delicate laundry is recommended.

Program	Symbol	Washing temperature (°C)	Maximum dry laundry capacity (kg)	Drawer for washing powder	Programme duration (min.)	Type of laundry / Descriptions
Synthetics/ Outdoor Clothing		*40 - 30 - "- -C"	3.5	2	110	Very dirty or synthetic textiles. (Nylon stockings, t-shirts, blouses, synthetic blends, etc.)
Duvets		*40 - 30 - "- -C"	3.5	2	88	For washing a duvet with a fibre filling and a "machine washable" label (max. 2,5 kg).
Jeans / Dark clothing		*30 - "- -C"	3.5	2	96	Black and dark underwear made of cotton, blended fibres or denim. Wash inside out. Jeans often contain an excess of dye and can bleed colour in the first few washes. Wash light and dark linen separately.
(**) Fast 60' 60°C.		* 60 - 50 - 40 - 30 - "- -C"	4.0	2	60	Dirty, cotton, coloured and linen fabrics washed at 60 °C in 60 minutes.
(***) Fast 12 min.		*30 - "- -C"	2.0	2	12	Lightly soiled cotton, coloured and linen textiles can be washed briefly for 12 minutes.

**Note:**

The programme duration may change depending on the amount of laundry, water type, ambient temperature and the selected Additional Functions.

(*) The program water temperature is at the factory default setting.

(**) If your washing machine has a quick wash function, you can enable the quick wash option on the display panel and fill the machine with 2 kg or less of laundry and have it washed in 30 minutes.

(***) Due to the short washing time of this programme, we recommend using less detergent. If the washing machine detects an uneven load, the programme may take longer than 15 minutes. You can open the washing machine door 2 minutes after the washing cycle has finished. (This two-minute period is not included in the duration of

the program).

- According to Regulations 1015/2010 and 1061/2010, programme 1 is the 'standard 60 °C cotton programme' and programme 2 is the 'standard 40 °C cotton programme'.
- The Eco 40-60 programme can clean normally soiled cotton laundry with a recommended washing temperature of 40°C or 60°C together in the same cycle and is used to assess compliance with EU eco-design legislation.
- The most efficient programmes in terms of energy consumption are generally those that wash for longer periods at lower temperatures.
- Filling the household washing machine to the capacity specified by the manufacturer for the relevant programmes will help save energy and water.
- Programme duration, energy consumption and water consumption values may vary depending on the weight and type of load, the selected additional functions, the type of water and the ambient temperature.
- For washing programmes that wash at low temperatures, it is recommended to use liquid detergent. The amount of detergent depends on the amount of laundry and the level of soiling. Follow the detergent manufacturer's recommendations for the amount to use.
- The speed of centrifugation affects noise and residual moisture content. The higher the centrifugation speed in the centrifugation phase, the higher the noise and the lower the residual moisture content.
- You can access the product database where the model information is stored by scanning the QR code on the energy label.

Program	Rated capacity kg	Energy consumption kWh/cycle			Program duration Hours: Minute			Water consumption Litres/cycle			Max. temperature °C			Residual moisture content % 1200 rpm. per min.		
		Rated capacity	1/2 filling	1/4 filling	Rated capacity	1/2 filling	1/4 filling	Rated capacity	1/2 filling	1/4 filling	Rated capacity	1/2 filling	1/4 filling	Rated capacity	1/2 filling	1/4 filling
Cotton 90 (cotton at 90 °C)	9	2.36			03:15			72			81			53 %		
Cotton 60 (cotton at 60 °C)	9	0.85			02:25			57			44			53 %		

Program	Rated capacity kg	Energy consumption kWh/cycle			Program duration Hours: Minute			Water consumption Litres/cycle			Max. temperature °C			Residual moisture content % 1200 rpm. per min.		
		Rated capacity	1/2 filling	1/4 filling	Rated capacity	1/2 filling	1/4 filling	Rated capacity	1/2 filling	1/4 filling	Rated capacity	1/2 filling	1/4 filling	Rated capacity	1/2 filling	1/4 filling
Eco 40-60	9	0.92	0.48	0.32	03:48	02:54	02:25	57	48	37	45	32	24	53 %	53 %	53 %
Synthetic / sportswear	3.5	0.71			01:50			48			42			53 %		
Fast 60 (fast to 60 °C)	4	0.95			01:00			32			58			53 %		
Cotton 20 (cotton at 20 °C)	4.5	0.25			00:59			54			20			53 %		

Important information

- Use only detergents, fabric softeners and accessories suitable for automatic washing machines. Excessive foam has formed and the automatic foam absorption system has been activated due to using too much detergent.
- We recommend regular cleaning of the washing machine every 2 months. For regular cleaning, use the Drum Clean programme. If your washing machine does not have a Drum Clean programme, use the Cotton 90 programme. Use only suitable descaling products developed specifically for washing machines as required.
- Never open the door when the washing machine is running. You can open the washing machine door 2 minutes after the washing cycle has finished.*
- Never open the door when the washing machine is running. The door opens immediately after the wash cycle is complete.*
- Installation and repair work must always be carried out by authorised service representatives to avoid potential risks. The manufacturer shall not be liable for damages that may arise from processes carried out by unauthorised persons.

(*) Technical data may vary depending on the appliance model.

CLEANING AND MAINTENANCE

Warning

Before proceeding with maintenance and cleaning, switch off the appliance and unplug the power cord from the socket.

Turn off the water supply before starting maintenance and cleaning of the washing machine.



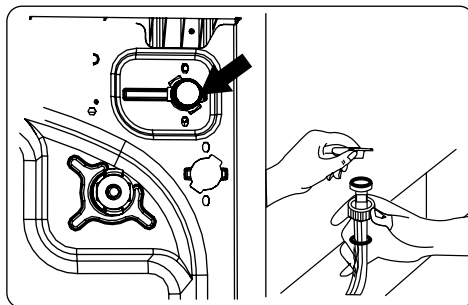
Warning:

Do not use solvents, abrasive cleaners, glass cleaners or all-purpose cleaners to clean the washing machine. The chemicals in them can damage the plastic surfaces of the appliance and other components.

Filters on the water inlet

Filters on the water inlet prevent dirt and foreign materials from entering the washing machine. We recommend cleaning these filters as soon as the washing machine is not receiving enough water, even though the water supply is on and the tap is open. We recommend cleaning the water supply filters every 2 months.

- Unscrew the supply hose(s) from the washing machine.
- To remove the water inlet filter from the filling valve, use a long pair of pliers and carefully remove the plastic rod on the filter.
- The second water inlet filter is located at the end of the inlet hose that goes to the tap. To remove the second water inlet filter, use a long pair of pliers and carefully remove the plastic rod on the filter.
- Clean the filter thoroughly with a soft brush, wash with soapy water and rinse thoroughly. Gently push the filter back into place.



Warning:

Filters on the water inlet valve can become clogged due to poor water quality or lack of maintenance and can become damaged. This can cause water leakage. Such failures are not covered by the warranty.

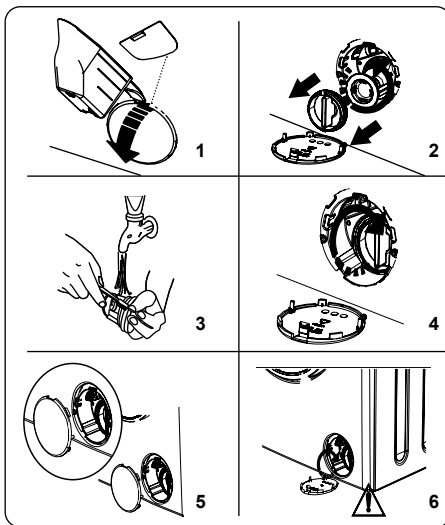
Pump filter

The pump filter system in your washing machine extends the life of the pump by preventing dirt from entering the machine. We recommend cleaning the pump filter every 2 months.

The pump filter is located behind the cover in the lower front right corner.

Cleaning the pump filter:

1. You can use the detergent measuring cup (*) supplied with the appliance or the liquid detergent level gauge to open the pump cover.
 2. Insert the end of the washing powder measuring cup or liquid detergent level gauge into the hole in the cover and gently push it backwards. The cover will open.
- Before opening, place a container under the filter cover to catch any water left in the washing machine.
 - Loosen the filter by turning it counterclockwise and pulling it out. Wait for the water to drain.
 - Depending on the amount of water inside the washing machine, you may need to empty the water collection container several times.
3. Use a soft brush to remove any foreign material from the filter.
 4. After cleaning, put the filter back in place and fix it by turning it clockwise.
 5. When closing the filter cover, make sure that the brackets inside the cover fit into the holes on the side of the front panel.
 6. Close the filter cover.



Warning:

The water in the pump may be hot, wait for it to cool before cleaning or servicing.

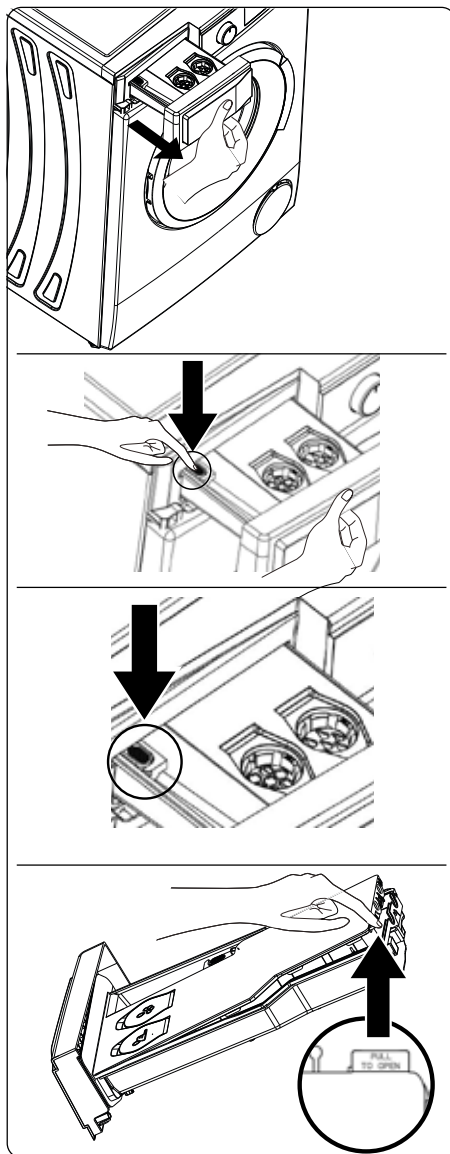
(*) Technical data may vary depending on the appliance model.

Detergent compartment

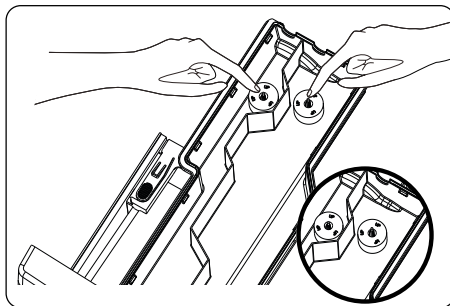
Over time, the use of detergent can lead to residue building up in the detergent drawer. We recommend removing the drawer every 2 months and cleaning the accumulated residue.

Removing the detergent drawer:

- Pull the drawer forward so that it is fully extended.
- Keep on pulling the detergent drawer as much as possible by pressing the area shown in the pictures in the drawer and displace the detergent drawer.
- Remove the lid found on the liquid detergent container and softener container by lifting the part shown in the picture.
- Wash it with plenty of water and with the help of a brush.
- Collect the deposition in the detergent drawer slot without letting them fall into your machine.
- Re-fit the detergent drawer after drying it with a towel or dry cloth.



- **Do not wash the detergent drawer in the dishwasher.**

**Warning:**

The part marked 'UP' should be placed in the chamber with the part facing upwards.

Liquid detergent dispenser (*)

- To clean the liquid detergent dispenser, remove it as shown in the picture below and clean the detergent residue thoroughly. Put the tray back. Make sure there is no residue left in the siphon.

(*) Technical data may vary depending on the appliance model.

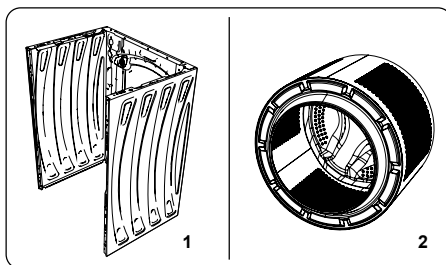
Body / Drum

1. Body

Use a mild, non-abrasive cleaner or soap and water to clean the outer casing. Wipe dry with a soft cloth.

2. Drum

Do not leave metal objects such as needles, paper clips, coins, etc. in the washing machine. These items lead to rust on the drum. To clean rust, use a chlorine-free cleaner and follow the cleaner manufacturer's instructions. Never use a wire cloth or similar hard objects to clean rust stains.

**PROBLEM SOLVING**

Repairs to the washing machine should be carried out by an authorised service company. If your washing machine requires repair or if you cannot resolve the problem using the instructions below, you should:

- Disconnect the washing machine from the power supply.
- Shut off the water supply.

ERROR	POSSIBLE CAUSE	TROUBLESHOOTING
The washing machine won't turn on.	The washing machine is not connected to the mains.	Connect the washing machine to the mains.
	The fuses are faulty.	Replace the fuses.
	No mains power.	Check the mains power supply.
	The Start/Pause button has not been pressed.	Press the Start/Pause button
	Program selector position "stop".	Switch the programme selector to the desired position.
	The washing machine door is not fully closed.	Close the washing machine door.
The washing machine doesn't draw water.	The tap is turned off.	Open the tap.
	The water supply hose may be kinked.	Check the supply hose and untwist it.
	The water supply hose is blocked.	Clean the supply hose filters. (*)
	The inlet filter is clogged.	Clean the water inlet filters. (*)
	The washing machine door is not fully closed.	Close the washing machine door.
The washing machine does not discharge water.	The drain hose is blocked or tangled.	Check the drain hose and then clean or unwind it.
	The pump filter is clogged.	Clean the pump filter. (*)
	In the drum, the laundry is pushed too close together.	Spread the laundry evenly in the washing machine.
The washing machine vibrates.	The feet have not been adjusted.	Adjust the feet. (**)
	The transport bolts have not been removed.	Remove the transport screws from the washing machine. (**)
	Small load in the drum.	This will not prevent the washing machine from operating.
	The washing machine is overloaded with laundry or the laundry is unevenly distributed.	Do not overload the drum. Spread the laundry evenly in the drum.
	The washing machine is placed on a hard surface.	Do not place the washing machine on a hard surface.
An excessive amount of foam builds up in the detergent drawer.	An excessive amount of detergent has been used.	Press the Start/Pause button to stop foaming, dilute one tablespoon of fabric softener in 1/2 litre of water and pour it into the detergent drawer. After 5 to 10 minutes, press the Start/Pause button.
	An unsuitable detergent has been used.	Only use detergents made for automatic washing machines in the washing machine.
Unsatisfactory washing result.	Your laundry is too dirty for the selected programme.	Use the information in the program table to select the most suitable program.
	Too little detergent was used.	Use the correct amount of detergent according to the instructions on the packaging.
	There's too much laundry in the washing machine.	Check that the maximum capacity for the selected programme has not been exceeded.
Unsatisfactory washing result.	Hard water.	Increase the amount of detergent according to the manufacturer's instructions.
	In the drum, the laundry is pushed too close together.	Check that the laundry is evenly distributed in the drum.
Once the washing machine is filled with water, the water is drained.	The end of the drain hose is too low for the washing machine.	Check that the drain hose is at a suitable height. (**).

ERROR	POSSIBLE CAUSE	TROUBLESHOOTING
No water appeared in the drum during washing.	No mistake. The water is in the part of the drum that is not visible.
Detergent residue sticks to the laundry.	Non-degradable particles of some detergents can appear as white spots on your laundry.	After drying, do another soak or clean the linen with a brush.
Grey spots appear on the laundry.	There is untreated oil, cream or ointment on your laundry.	For your next wash, use the correct amount of detergent according to the instructions on the packaging.
The wringing cycle does not take place or takes place later than expected.	No mistake. The unbalanced load system has been activated.	The unbalanced load control system will try to distribute the laundry evenly in the drum. The wringing process starts as soon as the laundry is spread out. Next time you wash, spread the laundry evenly in the drum.

(*) See the chapter on maintenance and cleaning of the washing machine.

(**) See the section on installing the washing machine.

AUTOMATIC FAULT WARNINGS AND WHAT TO DO

The washing machine is equipped with a built-in fault detection system. Faults are indicated by a combination of flashing operation lights. The most common error codes are listed below.

ERROR CODE	CAUSE	SOLUTION
E01	The washing machine door is not closed properly.	Close the door properly until you hear a click. If your washing machine continues to show a fault, turn off the machine, unplug it and immediately contact your nearest authorised service centre.
E02	Insufficient water pressure or low water level inside the washing machine.	Check that the tap is fully open. The water supply can be disconnected. If the problem persists, the washing machine will stop automatically after a while. Unplug the washing machine, turn off the water tap and contact the nearest authorised service centre.
E03	Defective pump, clogged pump filter or faulty pump electrical wiring.	Clean the pump filter. If the problem persists, contact your nearest authorised repairer. (*)
E04	There is an excessive amount of water in the washing machine.	The washing machine will drain the water itself. Once the water has drained, switch off the washing machine and unplug it from the mains. Turn off the water tap and contact the nearest authorised service centre.

(*) See the chapter on maintenance and cleaning of the washing machine.

ENGLISH

The use of the WEEE Symbol indicates that this product should not be treated as household waste. By ensuring this product is disposed of correctly, you will help protect the environment. For more detailed information about the recycling of this product, please contact your local authority, your household waste disposal service provider, or the shop where you purchased the item.

This product meets all of the related basic EU regulation requirements. The EU declaration of conformity is available on www.alzashop.com/doc.

This product sold in the European Union meet the requirements of Directive 2011/65/EU on the restriction of the use of certain hazardous substances in electrical and electronic equipment (RoHS).



R20221024

SIGURO

Alza.cz, a. s., Jankovcova 1522/53, 170 00 Prague 7, Czech Republic
© 2022 Alza.cz, a. s. All Rights Reserved.

www.siguro.net