

# THOMSON

## *Mlýnek na maso*

THMG48609

### UŽIVATELSKÝ MANUÁL



CE

# DŮLEŽITÁ BEZPEČNOSTNÍ OPATŘENÍ

- Pouze pro použití v domácnosti. Nepoužívejte pro průmysl účel.
- Při sestavování odpojte ze zásuvky a demontáž jednotky.
- V případě potřeby je nutný přísný dohled přístroj se používá v blízkosti dětí.
- Při přenášení jednotky nezapomeňte držet kryt motoru oběma rukama. Nenosit jednotku držením pouze za desku násypky popř hlava.
- Nepřipevňujte řezací čepel a řeznou desku při použití kibbe nástavce.
- Nikdy nepodávejte jídlo ručně. Vždy používejte jídlo posunovač.
- Nemelte tvrdé potraviny, jako jsou kosti, ořechy, Atd.
- Nemelte zázvor a jiné materiály tvrdé vlákno.
- Nepřetržitý chod mlýnku na maso by neměl být delší než 7 minut s následným 7minutovým intervalem pro chlazení motoru.
- Reverzní funkce je zakázána
- spotřebič je v provozu (například spínač knoflík „ON“ na knoflík „R“ nebo naopak)
- počkejte alespoň jednu minutu, než se mlýnek úplně zastaví, jinak může způsobit abnormální hluk, vibrace nebo elektrickou jiskra ve spotřebiči. A to může snadno vést k poškození spotřebiče.

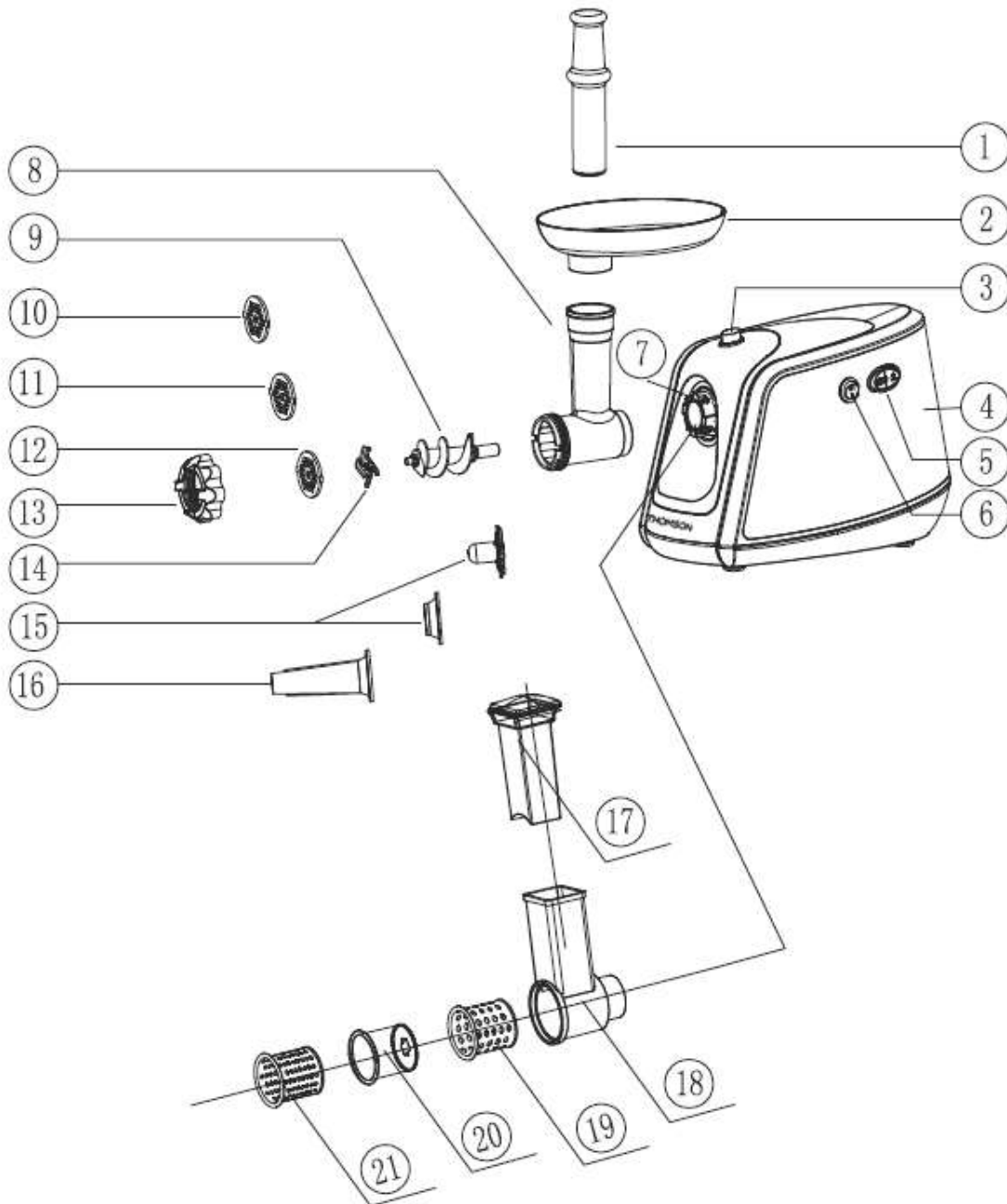
- Po použití by v něm zůstalo trochu jídla hlava mlýnku. To je normální.
- Abyste předešli zaseknutí, nepoužívejte násilí jednotka s nadměrným tlakem.
- Když dojde k aktivaci jističe, nedělejte to zapnout.
- Nikdy se nepokoušejte vyměnit díly a opravit je jednotku sami.
- Když se spotřebič nepoužívá a předtím čištění, odpojte spotřebič ze zásuvky vývod.
- Abyste se chránili před rizikem úrazu elektrickým proudem, neponořujte jednotku, kabel ani zástrčku do vody nebo jiná kapalinou.
- Spotřebiče mohou používat osoby se sníženou fyzickou, smyslovou nebo duševní schopností nebo nedostatek zkušeností a znalostí, pokud byly dány dohled nebo instrukce týkající se použití spotřebič bezpečným způsobem a pokud ano pochopit související nebezpečí. Děti se spotřebičem nesmí hrát.
- Výstraha: potenciální zranění při nesprávném použití. Péče při manipulaci s ostrými předměty řezací nože, vyprázdnění desky násypky a podávací šroub během čištění.
- Spotřebič vždy odpojte od zásobovat, pokud je ponecháno bez dozoru a dříve montáž, demontáž nebo čištění.
- Žádné servisní díly nelze mýt v myčce nádobí. Pokud je napájecí kabel poškozen, musí být nahrazena výrobcem, jeho servis

zmocněncem nebo podobně kvalifikovanými osobami aby jste se vyhnuli se nebezpečí.

-  Vhodné pro styk s potravinami

- Tento spotřebič je určen k použití v domácnosti.

# DESCRIPTION



- 1. Food pusher
- 2. Hopper plate
- 3. Push knob
- 4. Motor housing
- 5. ON/OFF/ Reverse switch
- 6. ON/ Reverse switch
- 7. Head inlet
- 8. Head
- 9. Feed screw
- 10. Cutting plate (fine)
- 11. Cutting plate (medium)

- 12. Cutting plate (coarse)
- 13. Fixing ring
- 14. Cutting blade
- 15. Kibbe attachment
- 16. Sausage attachment
- 17. Vegetable slicer pusher
- 18. Vegetable slicer body
- 19. Coarse grater
- 20. Slicer
- 21. Cutting attachment

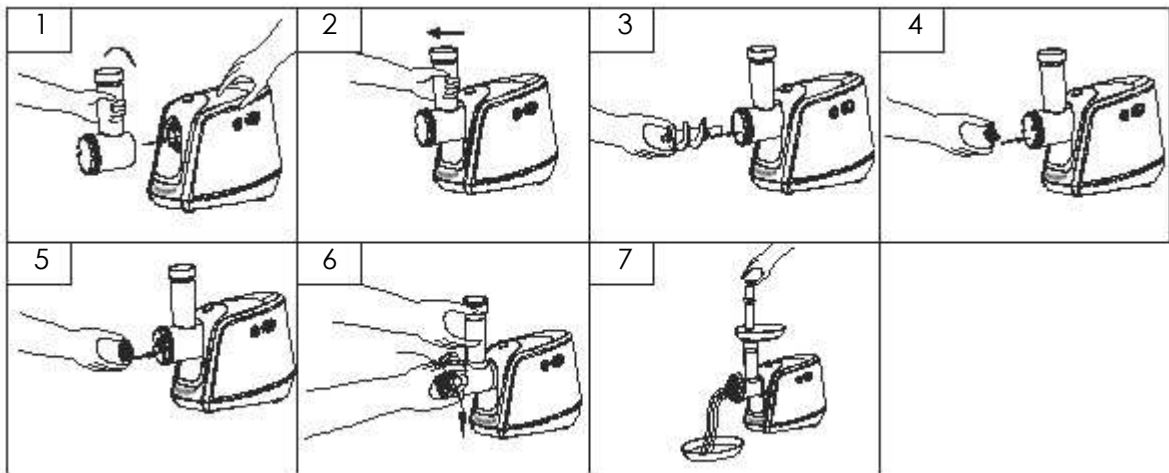
## FOR THE FIRST USE

- Check that voltage indicated on the rating label corresponds the main voltage in your home.
- Wash all parts (except body) in warm soapy water.
- Before plugging in, ensure the "ON/OFF/ Reverse" switch is turned to "OFF" position.

# INSTRUCTION FOR USE

## ASSEMBLING

- Holding the head and insert it in the inlet with one hand, push the black knob with another hand, tighten it clockwise to secure the head. (fig.2).
- Place the feed screw into the head, long end first, by turning the feed screw slightly until it is set into the motor housing (fig.3).
- Place the cutting blade onto the feed screw shaft with the blade facing the front as illustrated (fig.4). If it is not fitted properly, meat will not be ground.
- Place the desired cutting plate next to the cutting blade, fitting protrusions in the slots (fig.5).
- Support or press the centre of the cutting plate with one finger then screw the fixing ring until tight with another hand (fig.6). Do not over tighten.
- Locate the unit on a firm place.
- The air passage at the bottom and the side of the motor housing should be kept free and not blocked.



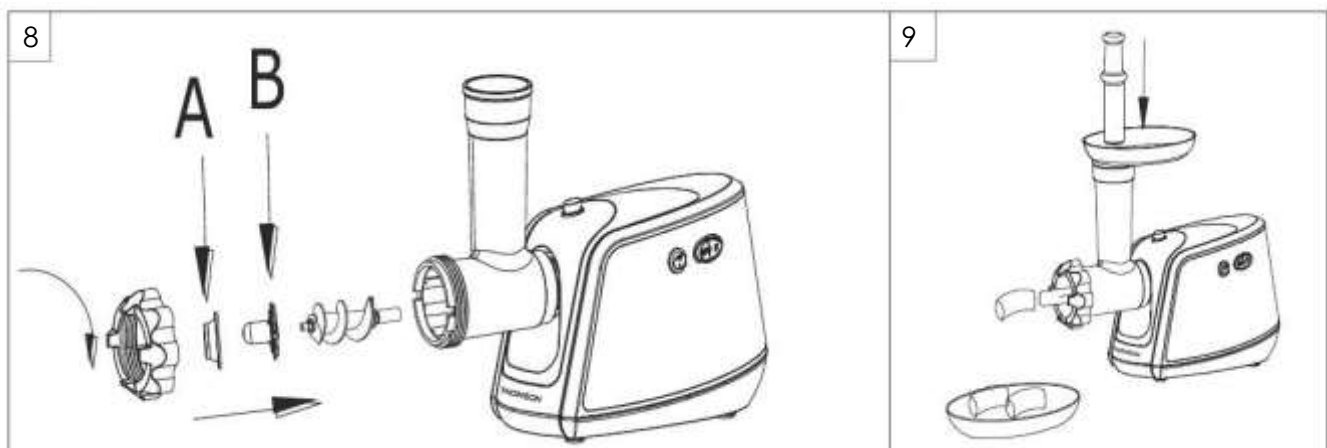
## MINCING MEAT

- Cut all foods into pieces. Tendonless, boneless and fatless meat is recommended (approximate size: 20 mm x 20 mm x 60 mm) so that they fit easily into the hopper opening.
- Plug in and turn the "R / ON" switch to "ON" position, then turn the "ON/OFF/ Reverse" switch to "ON" position.
- Feed foods into the hopper plate. Use only the food pusher (fig.7).
- After use switch the unit off and unplug it from the power supply.

## REVERSE FUNCTION

- In case of jamming switch the appliance off by turning the "R / ON" switch to "R" position and "ON/OFF/ Reverse" switch to "R" position.
- Feed screw will be rotating in the opposite direction, and the head will get empty. If it doesn't work, switch the unit off, plug out and clean it.

## MAKING KIBBE (for 1 person)



## **RECIPE FOR THE STUFFING**

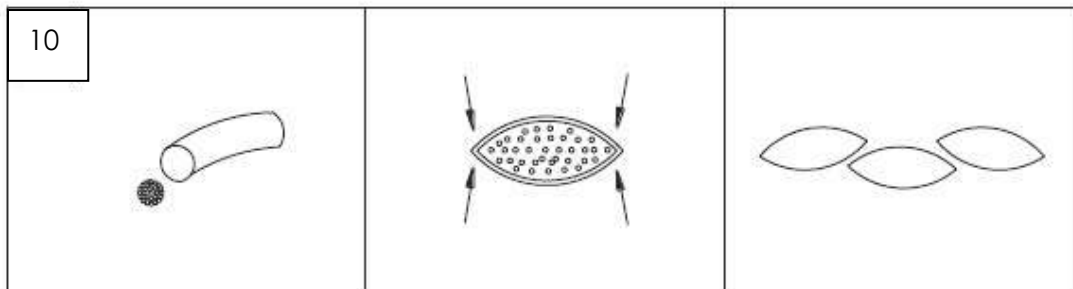
Mutton	100g
Olive oil	1 tablespoons
Onion (cut finely)	1 tablespoons
Spices	up to your taste
Salt	up to your taste
Flour	1 1/2 tablespoons

- Before making Kibbe, mince mutton once or twice.
- Fry onion until brown and add minced mutton, all spice, salt and flour.

## **RECIPE FOR THE OUTLET COVER**

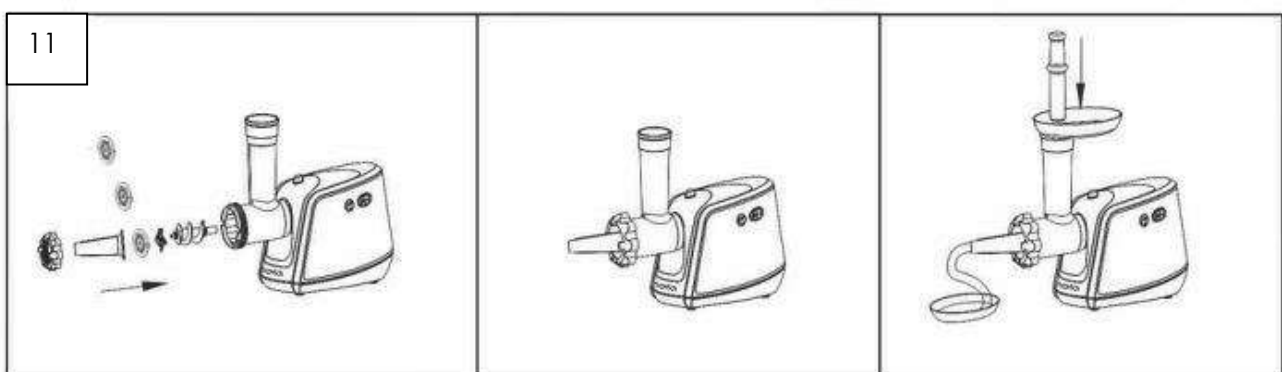
Lean meat	450g
Flour	150-200g
Spices	up to your taste
Nutmeg (cut finely)	1
Powdered red pepper	up to your taste
Pepper	up to your taste

- Mince meat three times and mix all ingredients together in a bowl. More meat and less flour for outlet cover creates better consistency and taste.
- Grind the mixture three times.
- Disassemble by reversing the steps from 6-3 to remove the cutting plate and cutting blade.
- Place kibbe attachments onto the feed screw shaft together, fitting protrusions in the slots (fig.8).
- Screw fixing ring into place until tight. Do not over tighten (fig.9).
- Make the cylindrical outlet cover (fig.10).
- Form kibbe as illustrated below and deep fry.



## **MAKING SAUSAGE**

Before starting please assemble sausage attachment as per following (fig.11)



## CLEANING AND MAINTENANCE

### DISASSEMBLING

- Make sure that the motor has stopped completely.
- Disconnect the plug from the power outlet.
- Disassemble by reversing the steps from 6-1 pictures.
- If the fixing ring is not easily removed by hands, please use tools to remove it. (Not included) (fig.12).
- To remove the cutting plate easily, place a screwdriver between the cutting plate and the head as illustrated and lift it up (fig.13).

### CLEANING

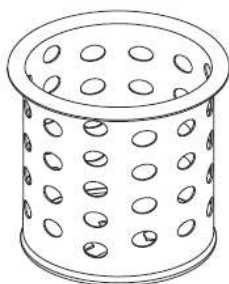
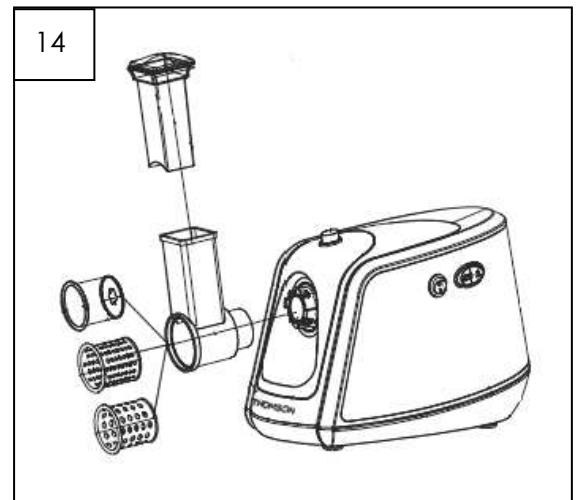
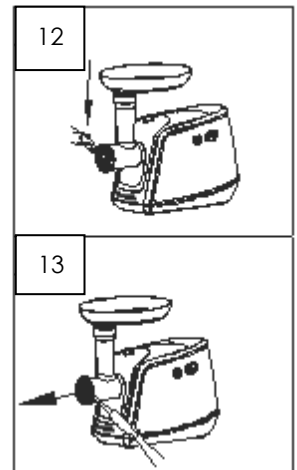
- Remove meat, etc. Wash each part in warm soapy water, it is not dishwasher safe.
- A bleaching solution containing chlorine will discolor aluminum surfaces.
- Do not immerse the motor housing in water, but only wipe it with a damp cloth and then dry it thoroughly.
- Thinners and petrol will crack or change the color of the unit.
- Wipe all the cutting parts by wet cloth, they are not dishwasher safe.

### MAKING SALAD

For grinding, follow the right picture (fig. 14) shown above for plastic pipe, and then place the desired tool into the pipe opening until fit in completely. You may now use to grind the food with rectangular food pusher.

### VEGETABLE CUTTING

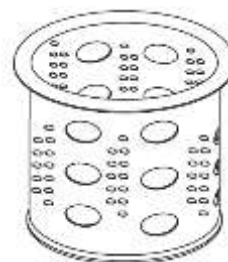
- Install the grater (19), vegetable slicer (20) or cutting attachment (21) into the vegetable slicer body (18).
- Install the vegetable slicer body, turning it counterclockwise till locking (see the drawing of the meat grinder).
- Insert the plug into the mains socket.
- Switch the unit on, setting the switch (5) to the "ON" position, the switch (6) should be in the position "ON".
- During the operation use only the pusher (17) supplied with the unit; do not use any other objects, never push vegetables with your fingers.
- To remove the vegetable cutting accessories, press the lock button (3), turn the attachment clockwise (see the drawing of the meat grinder) and remove it.
- After you finish operating the unit, switch the meat grinder off, setting the switch (5) to the position "0" and unplug the unit; only after that you can disassemble it.
- To remove the meat grinder head press the lock button (3), turn the meat grinder head clockwise and remove it.



Coarse grater



Slicer



Cutting attachment

## **TECHNICAL SPECIFICATION**

Model: THMG48609

Rated voltage: 220-240V~ 50-60Hz

Rated power: 350-450W

### **Warning:**



This product bears the selective sorting symbol for waste electrical and electronic equipment (WEEE).

This means that this product must be handled pursuant to European Directive 2002/96/EC in order to be recycled or dismantled to minimize its impact on the environment.

For further information, please contact your local or regional authorities.

Electronic products not included in the selective sorting process are potentially dangerous for the environment and human health due to the presence of hazardous substances.

The warranty does not cover the wear parts of the product, nor the problems or damage resulting from:

- (1) surface deterioration due to normal wear and tear of the product;
  - (2) defects or deterioration due to contact with liquids and corrosion caused by rust or the presence of insects;
  - (3) any incident, abuse, misuse, alteration, disassembly or Unauthorized repair
  - (4) improper maintenance, improper use
- Concerning the product or connection to an incorrect voltage;
- (5) any use of accessories not supplied or not approved by the manufacturer.

The guarantee will be cancelled if the nameplate and / or serial number of the product are removed.

**THOMSON** is a brand of Technicolor SA used under licence by  
**SCHNEIDER CONSUMER GROUP**

**This product is imported by: SCHNEIDER CONSUMER GROUP**  
**12, rue Jules Ferry, 93110 Rosny-sous-Bois, FRANCE**