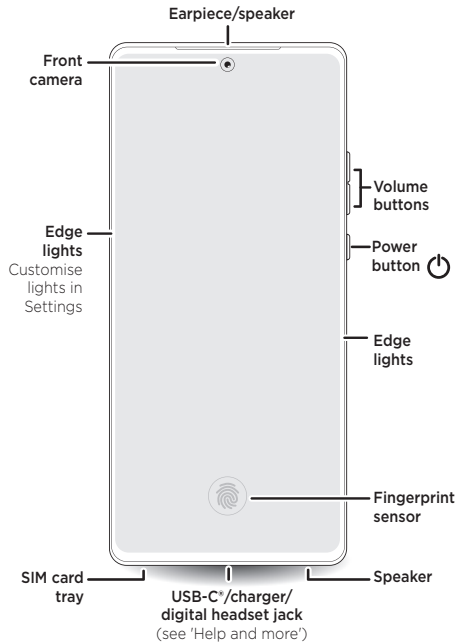
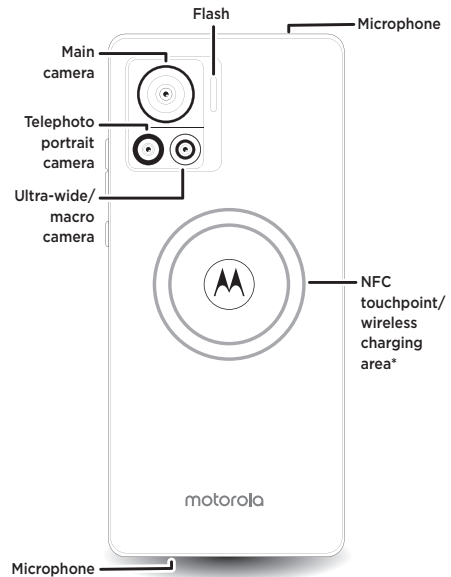


Meet your

motorola edge 30 ULTRA

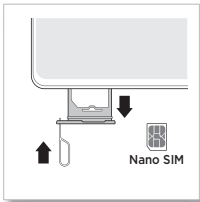


Before using your phone, please read the legal, safety and regulatory information provided with your product.

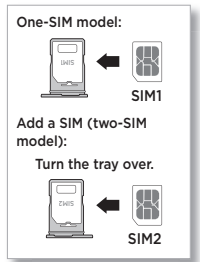


*Charge your phone using a Qi-certified wireless charger (sold separately). Your phone can wirelessly charge another Qi-compatible device. Swipe up and tap **Settings > Battery > Power sharing**, then tap the switch to turn it on.

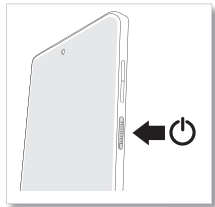
Put in the cards and power on



- 1 Insert the SIM tool into the tray hole to pop out the tray.
Make sure you use the correct size SIM card and don't cut the SIM card.



- 2 Insert the SIM card(s) with the gold contacts up, then gently push the tray into the slot.
Note: 5G service plan and 5G network coverage required; available only in selected areas; device not compatible with all 5G networks. Contact your service provider for details.



- 3 Press and hold the Power button, then follow the prompts to get started.





With **moto** care, extend your warranty coverage up to three years, and take advantage of features like accidental damage protection. Visit:

motorola.com/motocare



Help and more

Get answers, updates and info:

- **Help is here:** from the Home screen, swipe up and tap **Settings > Help** to learn how to use your phone and get support.
- **Get more:** get software, user guides and more at www.motorola.com/mymotoedge.
- **Get apps:** tap **Play Store** to browse and download apps.
- **Ready For:** your phone works with **Ready For**, a new platform that extends your phone's experience to any compatible PC, TV or monitor. To learn more, scan the QR code or visit www.motorola.com/ready-for
- **Uninstall an app:** touch and hold the app, then drag it to **Uninstall**.
- **Backup and restore:** log in to your Google account to restore contacts, calendar and more.
- **Use a digital headset:** to use a digital headset, you'll need one with a USB-C connector. If you're using a 3.5-mm headset, you'll need a 3.5-mm to USB-C digital headset adapter to connect it. Headset and adapter may be sold separately.



Caution: your phone comes with a screen protector attached. A screen protector thicker than 0.5 mm may reduce your phone's touchscreen sensitivity.

Legal information. This guide provides important legal, safety and regulatory information that you should read before using your product. For the complete legal information, from the Home screen swipe up and tap **Settings > Q**, then type **Legal information**, or visit www.motorola.com/device-legal.

Water repellent. Your phone is not waterproof. For more about your phone's water-repellent design and care, swipe up and tap **Settings > Help**.

Battery safety. To prevent possible burning and injury, the battery in your phone should only be removed by a Motorola-approved service centre or similar skilled personnel.

If your phone becomes unresponsive, press and hold the Power button until the screen goes dark and your phone restarts. Charge your phone using a compatible Motorola charger (may be sold separately). Use of other chargers is not recommended and may impair the charging performance. Don't charge your phone in temperatures below -20°C or above 45°C. Chargers that do not comply with applicable national standards may be unsafe, with risk of death or injury, and may cause slow charging or product damage. To view applicable standards and to learn more, see the "Legal information" section of this guide or visit www.motorola.com/device-legal.

Warning about high volume usage. To prevent possible hearing damage, do not listen at high volume levels for long periods. When your headset volume reaches the high volume threshold, a warning will be shown. Tap **OK** to dismiss it, or wait one to five seconds, then press the Volume up button to dismiss the alert and enable the volume to continue to be adjusted.



Disposal and recycling. For help recycling products and packaging responsibly, visit www.motorola.com/recycling.



Class 1 laser. This device is classified as a Class 1 laser product, which is safe in normal use per IEC60825-1:2007 and IEC60825-1:2014. This device complies with 21 CFR

CLASS 1 LASER PRODUCT

1040.10 and 1040.11, except for deviations pursuant to Laser Notice 50, dated 24 June 2007. Do not attempt to modify or disassemble the laser focusing system.

Extreme heat or cold. Don't use your phone in temperatures below -20°C or above 45°C. Don't store/transport your phone in temperatures below -20°C or above 60°C.

Legal disclaimers. Features, services and applications are network dependent and may not be available in all areas; additional terms/charges may apply. Product specifications and other information contained in this guide are believed to be accurate at the time of printing. Motorola reserves the right to correct or change any information without notice.

Arbitration. Your purchase is governed by a binding arbitration clause. For more information and how to opt out, see the legal guide that came with your phone.

SAR information (on e-label). To view specific absorption rate (SAR) values for this phone, from the Home screen, swipe up and tap **Settings > Q**, then type **Regulatory labels**, from your phone's dial pad type ***#07#**, or visit www.motorola.com/sar.

Supported frequencies and power (Model XT2241-2). This phone is capable of operation on the following frequencies, subject to location and network availability.

Operating mode	Frequency range MHz/Band	Maximum nominal transmit power dBm
Bluetooth	2400 - 2483.5	20 dBm EIRP
Wi-Fi	2400 - 2483.5	20 dBm EIRP
Wi-Fi	5150 - 5250 / 5945 - 6425	23 dBm EIRP
Wi-Fi	5250 - 5350 / 5470 - 5725	20 dBm EIRP
Wi-Fi	5725 - 5850	14 dBm EIRP
GNSS	1559 - 1610	N/A
NFC	13.56	-11.04 dBuA/m@10 m
WPT	110 - 148 KHz	0.6 dBuA/m@10 m
GSM (Australia not applicable)	2/3/5/8	33/30
UMTS	1/2/4/5/8	24
LTE	1/2/3/4/5/7/8/12/13/17/18/19/20/25/26/28/32/34/38*/39/40/41*/42/43/48/66	23(26*)
5G	n1/2/3/5/7/8/20/28/38/40/41*/66/77*/78*	23(26*)

Copyright and trademarks. MOTOROLA, the stylised M logo, MOTO and the MOTO family of marks are trademarks or registered trademarks of Motorola Trademark Holdings, LLC. Google, Android, Google Play and other related marks and logos are trademarks of Google LLC. USB Type-C* and USB-C* are registered trademarks of USB Implementers Forum. All other product or service names are the property of their respective owners. © 2022 Motorola Mobility LLC. All rights reserved.

Product ID: **motorola edge 30 ultra** (Model XT2241-2)

Manual Number: SSC8D60812-B

motorola.com

