

## Manuals+

[Q & A](#) | [Deep Search](#) | [Upload](#)

manuals.plus /

› [Amazon](#) /

› [Amazon Kindle Scribe 2024 User Guide](#)

## Amazon Kindle Scribe 2024

# Amazon Kindle Scribe 2024 User Guide

Comprehensive instructions for your Kindle Scribe e-reader tablet.

[Setup](#) [Operating](#) [Maintenance](#) [Troubleshooting](#) [Specifications](#)

## 1. GETTING STARTED: INITIAL SETUP

This section guides you through the initial setup process of your Amazon Kindle Scribe 2024, from unboxing to first use.

### 1.1 Unboxing and Charging

Upon receiving your Kindle Scribe, carefully remove it from its packaging. It is recommended to fully charge the device before its first use. Connect the included USB-C cable to the Kindle Scribe's charging port and the other end to a compatible power adapter or computer USB port.

# KINDLE SCRIBE 2024 USER GUIDE

Learn How to Get Started and Master your All-New Amazon Kindle E-Reader Tablet For Beginners and Seniors

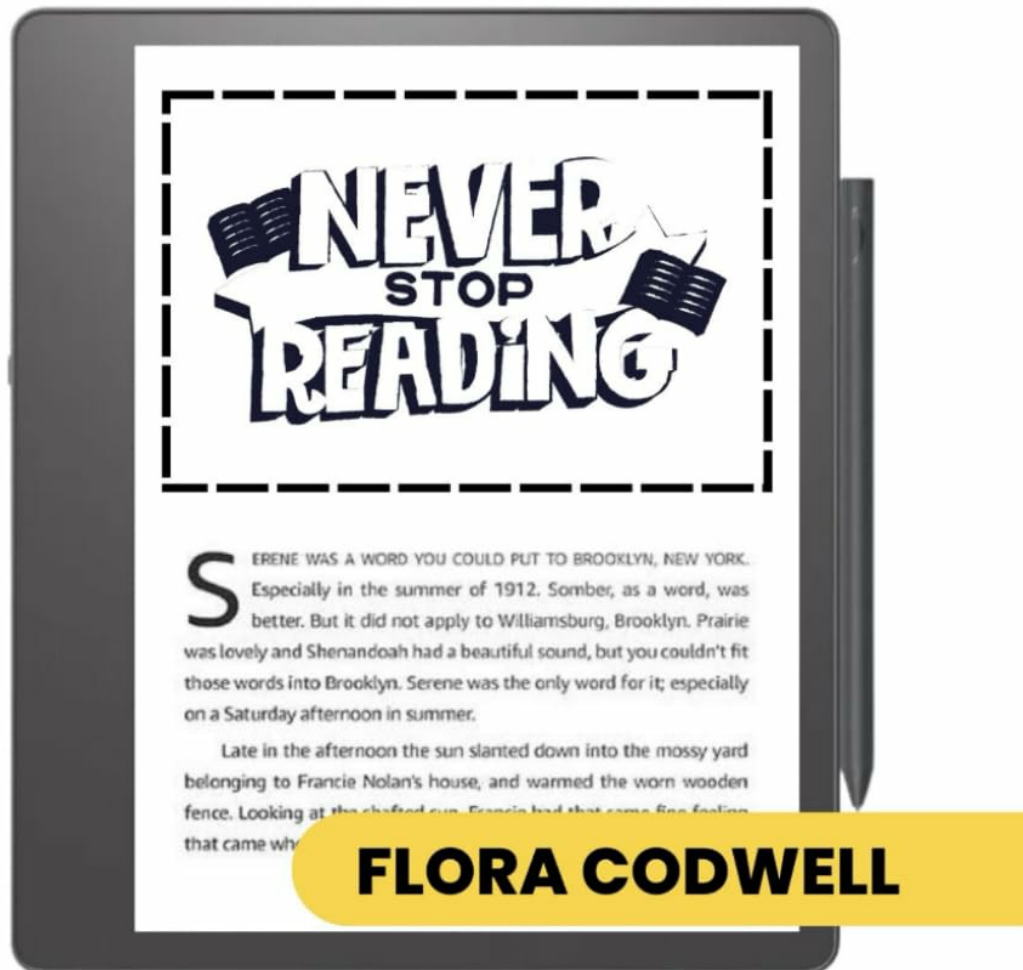


Image 1.1: The Amazon Kindle Scribe 2024 with its accompanying stylus. This image illustrates the device's form factor and the stylus, which is used for writing and navigation.

## 1.2 Powering On and Basic Configuration

Press and hold the power button located on the side of the device until the screen illuminates. Follow the

on-screen prompts to select your language, connect to a Wi-Fi network, and register your Kindle Scribe to your Amazon account. Registration is essential for accessing your Kindle library and Amazon services.

## 1.3 Stylus Pairing

The Kindle Scribe comes with a stylus for writing and drawing. The stylus typically pairs automatically upon initial setup. If it does not, ensure it is charged and follow the on-screen instructions or refer to the device settings for manual pairing.

---

## 2. OPERATING YOUR KINDLE SCRIBE

This section details the primary functions and advanced features of your Kindle Scribe, enhancing your reading and writing experience.

### 2.1 Reading Books and Documents

From the home screen, tap on a book cover to open it. Use gestures to navigate:

- **Tap right side of screen:** Turn to the next page.
- **Tap left side of screen:** Turn to the previous page.
- **Tap top of screen:** Access reading menu options (font, lighting, notes).

### 2.2 Using the Stylus for Annotations and Notes

The stylus allows for direct interaction with your content. While reading, you can:

- **Highlight text:** Drag the stylus over text to highlight it.
- **Add notes:** Tap on a word or phrase, then select the note icon to write a note with the stylus.
- **Write in PDFs:** Open PDF documents and use the stylus to write directly on the pages.

### 2.3 Notebook Feature

The Kindle Scribe includes a dedicated Notebook feature for freehand writing, sketching, and organizing thoughts. Access it from the home screen. You can create multiple notebooks, use different pen types, and organize your notes into folders.

### 2.4 Customizing Reading Settings

Adjust your reading experience by tapping the top of the screen while in a book. Options include:

- **Font and Layout:** Change font style, size, line spacing, and margins.
- **Lighting:** Adjust the front light and warm light settings for comfortable reading in various environments.
- **Dark Mode:** Invert screen colors for a dark background with light text.

---

## 3. MAINTENANCE AND CARE

Proper care ensures the longevity and optimal performance of your Kindle Scribe.

### 3.1 Cleaning Your Device

Use a soft, lint-free cloth to gently wipe the screen and body of your Kindle Scribe. Avoid abrasive materials, sprays, or solvents that could damage the screen or finish. For stubborn smudges, slightly dampen the cloth with water.

### 3.2 Battery Optimization

To maximize battery life:

- Reduce screen brightness or turn off the front light when not needed.
- Turn off Wi-Fi when not actively downloading content or syncing.
- Ensure the device is fully charged before extended periods of non-use.
- Avoid extreme temperatures, which can affect battery performance.

### 3.3 Software Updates

Periodically check for software updates in the device settings. Updates often include performance improvements, new features, and bug fixes. Connect to Wi-Fi to download and install updates.

---

## 4. TROUBLESHOOTING COMMON ISSUES

This section addresses common problems you might encounter with your Kindle Scribe and provides solutions.

### 4.1 Device Not Responding or Frozen

If your Kindle Scribe becomes unresponsive, perform a hard reset. Press and hold the power button for approximately 40 seconds until the device restarts. Release the button once the Kindle logo appears.

### 4.2 Wi-Fi Connection Problems

If you cannot connect to Wi-Fi:

1. Ensure Wi-Fi is enabled on your Kindle Scribe.
2. Restart your Wi-Fi router.
3. Try connecting to a different Wi-Fi network to rule out router issues.
4. Verify that you are entering the correct Wi-Fi password.

### 4.3 Stylus Not Working

If the stylus is not responding:

- Ensure the stylus is properly attached to the device (if magnetic) or charged (if applicable to your stylus model).
- Restart your Kindle Scribe.
- Check device settings to confirm stylus is paired.

### 4.4 Content Not Syncing

If your books or notes are not syncing across devices:

- Verify that your Kindle Scribe is connected to Wi-Fi.
- Ensure Whispersync is enabled in your Amazon account settings.

- Manually sync your device by going to [Settings > Sync Your Kindle](#)

## 5. PRODUCT SPECIFICATIONS

Please note that the provided source material describes a user guide book for the Kindle Scribe, not the device itself. Therefore, detailed technical specifications for the Kindle Scribe 2024 device are not available in this document. For comprehensive device specifications, please refer to the official Amazon product page or the documentation included with your Kindle Scribe hardware.

General features of the Kindle Scribe include:

- E-ink display with front light.
- Stylus support for writing and drawing.
- Wi-Fi connectivity.
- Integration with Amazon Kindle ecosystem.

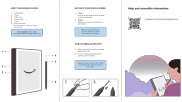

## 6. WARRANTY AND SUPPORT


Information regarding the warranty for the Amazon Kindle Scribe 2024 is not available in this user guide. For warranty details, technical support, and customer service, please visit the official Amazon support website or contact Amazon customer service directly.

You can typically find support resources at [amazon.com/devicesupport](https://amazon.com/devicesupport).

© 2024 Amazon. All rights reserved. Kindle Scribe is a trademark of Amazon.com, Inc. or its affiliates.

### Related Documents - Kindle Scribe 2024

	<p><a href="#">Kindle Scribe Quick Start Guide: Setup and Pen Tip Replacement</a></p> <p>Learn how to set up your Amazon Kindle Scribe, identify its components, and replace the pen tips with this concise guide.</p>
	<p><a href="#">Amazon Fire Tablet and Kindle E-Reader Quick Setup Guide</a></p> <p>A quick setup guide for Amazon Fire tablets and Kindle e-readers, covering battery charging, Wi-Fi connection, account registration, payment settings, content download, and sharing features like Family Library.</p>

 <p>Learn more about your Kindle by selecting the Kindle User's Guide in the Kindle User's Guide.</p> <p>To contact Amazon Customer Service, visit <a href="http://www.amazon.com/customer-service">www.amazon.com/customer-service</a>.</p>	<p><a href="#">Amazon Kindle E-Reader Quick Start and Support</a></p> <p>Get started with your Amazon Kindle e-reader. Find information on device usage, access the Kindle User's Guide, and contact Amazon Customer Service for support.</p>
	<p><a href="#">Amazon Fire Tablet and Kindle E-Reader Quick Setup Guide</a></p> <p>A quick setup guide for Amazon Fire tablets and Kindle e-readers, covering initial charging, Wi-Fi connection, account registration, payment settings, content download, and family sharing features.</p>
 <p>Getting to know your Kindle</p> <p>To charge your Kindle, connect it to the USB charging cable or adapter. Connect the opposite end of the USB charging cable to a Kindle KindleFire compatible charging accessory (not included) or a USB power adapter. To learn more about charging accessories, visit <a href="http://www.kindle.com/support/charge">www.kindle.com/support/charge</a>.</p> <p>To start your Kindle, press the power button. To unlock your Kindle, touch the lock icon and drag the slider bar across the screen to the left. To learn more about your Kindle, open the Kindle app. For Kindle customer support, visit <a href="http://www.kindle.com/support">www.kindle.com/support</a>.</p>	<p><a href="#">Amazon Kindle Fire HD Quick User Guide</a></p> <p>A quick user guide for the Amazon Kindle Fire HD, detailing device features, charging, unlocking, and important product information including terms, policies, and warranty.</p>
	<p><a href="#">Kindle Kids Edition Quick Start Guide</a></p> <p>Get started with your Amazon Kindle Kids Edition. This guide covers what's included in the box and the initial setup process, including registration and claiming your 1-year Amazon FreeTime Unlimited subscription.</p>

Documents - Amazon – Kindle Scribe 2024

↑

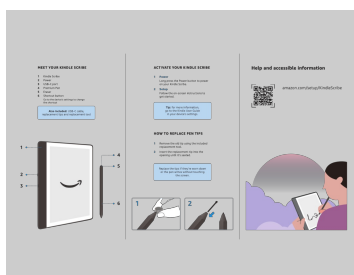
Table of Contents

To view on your phone or desktop, go to user guides at [www.amazon.com/devicesupport](http://www.amazon.com/devicesupport).

- Getting Started
- Setting up your Kindle Scribe
- Kindle controls
- Keyboard
- Network connectivity
- Pen & Stylus Use
- View/View screen reader
- Enhancements Kindle display technology
- Using your Kindle
- Narration: your Kindle
- Screen indicators
- Stylus features
- Manuals Content
- The screen icons
- Review books & audiobooks
- Reporting documents
- Settings & privacy
- Content Collections
- Device and Cloud storage
- Expertise assistance: search up documents and audiobooks
- Restore and delete items from your Kindle
- Using your Kindle with your computer
- Readfast on your Kindle
- Content
- Navigation & touch
- Customize your text display
- Customize your PDF display
- Introducing PDF view control
- Readfast Kindle content on other devices
- Content notes
- Take notes on your Kindle
- The screen reader
- Screenbooks
- Screening in Books
- Screening in PDFs

[pdf] Quick Start Guide Guide

d1ergij2b6wmg5 cloudfront net kug kindle scribe 2024 v1 en US html Kindle Scribe U MAmazon Tablet User Guide Free Instruction ManualKindle version UG ENcentral manuals tablet amazon EN ||| 19/06/2025 11:34 d1ergij2b6wmg5.cloudfront.net/kug/kindle\_scribe\_2024/v1/en-US/html/kug.html Table of Contents To view on your phone or desktop, go to user guides at [www.amazon.com/devicesupport](http://www.amazon.com/devicesupport). Getting Started Setting up your Kindle Scribe Kindle controls Keyboard Network connectivity Pen Pre... lang:en score:48 filesize: 1.59 M page\_count: 46 document date: 2025-06-19



[pdf] Quick Start Guide Guide

22 005413 02 KindleScribe Online QSG INTL EN Kindle Scribe 2024 Quick StartAmazon Tablet User Guide Free Instruction ManualKindle version QG ENcentral manuals tablet amazon ||| ... lang:en score:46 filesize: 146.65 K page\_count: 1 document date: 2024-07-29

