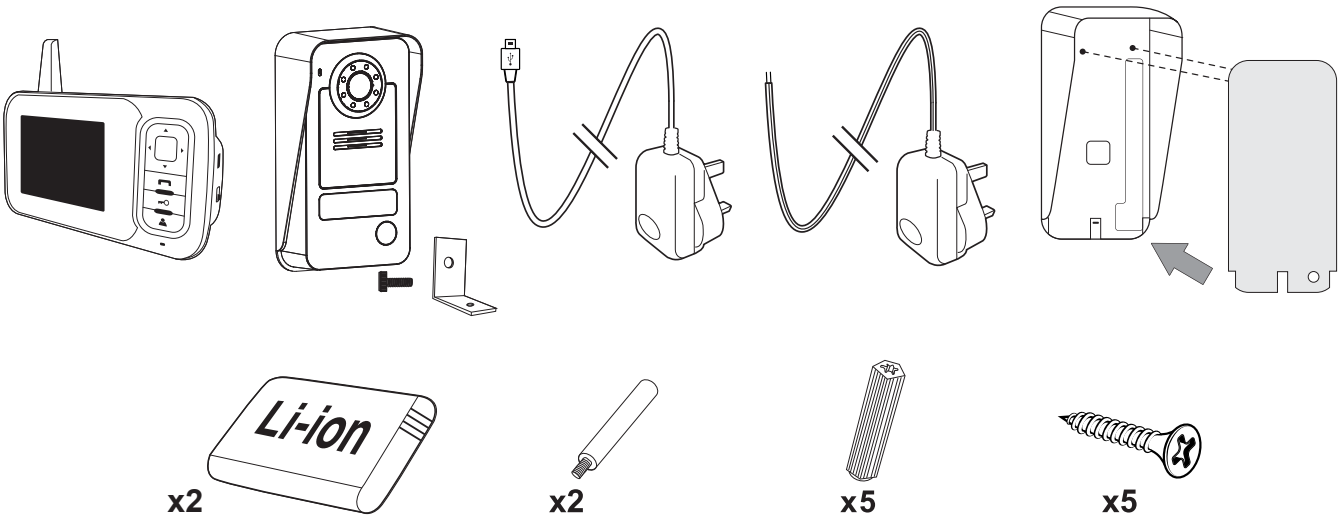
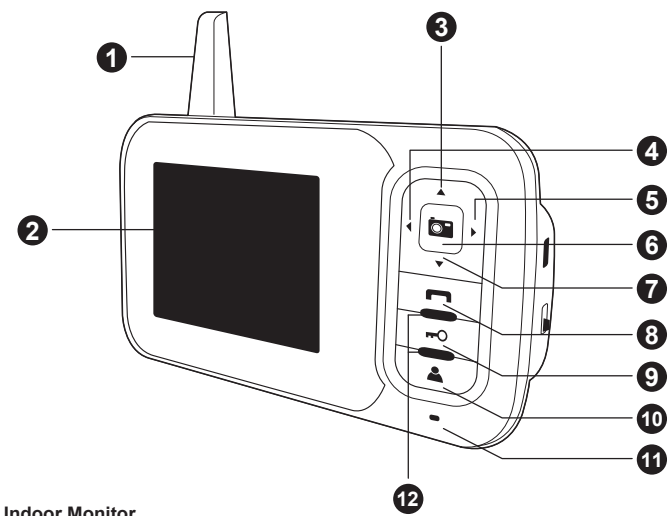


Included in the pack:

- CAUTION**
1. Please read these instructions before setting up and using the device.
  2. Do not cut the power supply cable to extend it; the transformer will not operate with a longer cable. Do not plug in the transformer until all the wiring has been finished.
  3. This product is not a toy. Keep it out of reach of children.
  4. Do not operate electrically powered products in explosive atmospheres, such as in the presence of flammable liquids, gases, or dust. Electrically powered products may create sparks which are likely to ignite dust or create fumes.
  5. The warnings, precautions, and instructions presented in this instruction manual cannot cover all possible conditions and situations that may occur the operator must understand that common sense and caution are factors that the product can not provide but the operator must put in place.
  6. Do not expose the power adapter for this product to rain or moisture.  
Water entering the Power Adapter will increase the risk of electric shock.
  7. Do not abuse the Power Cord. Never use the cord for unplugging the plug from the outlet. Keep cord away from heat, oil, sharp edges or moving parts. Damaged or entangled cords increase the risk of electric shock.
  8. The adapter must match the power outlet.  
Never modify the cord in any way. Unmodified plugs and suitable outlets will reduce risk of electric shock.

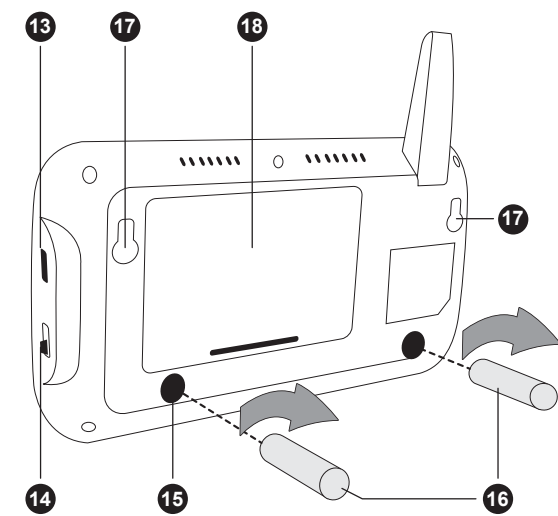


Key features

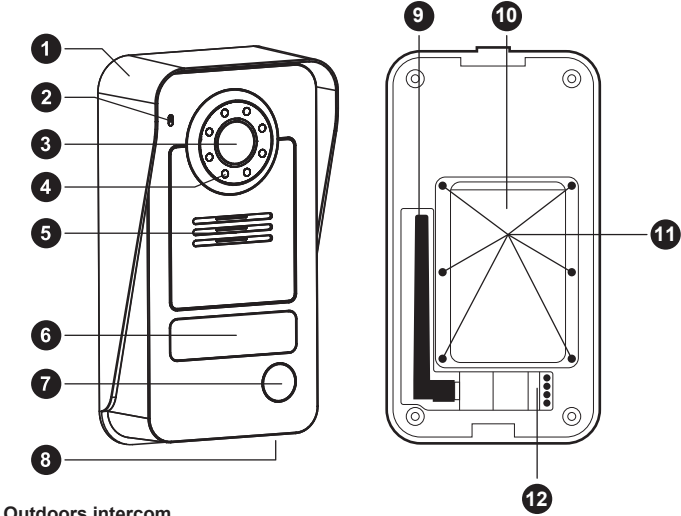


Indoor Monitor

- |                |                      |                     |
|----------------|----------------------|---------------------|
| 1. Antenne     | 5. RIGHT button      | 9. Door lock button |
| 2. Screen      | 6. OK / Photo button | 10. Monitor button  |
| 3. UP button   | 7. DOWN button       | 11. Microphone      |
| 4. LEFT button | 8. Intercom button   | 12. LED lighting    |



- |                          |                               |
|--------------------------|-------------------------------|
| 13. USB port             | 17. Wall mount                |
| 14. Power ON/OFF         | 18. Battery compartment cover |
| 15. Metal support screws |                               |
| 16. Metal supports       |                               |



Outdoors intercom

- |                          |                 |                                 |
|--------------------------|-----------------|---------------------------------|
| 1. Rain cover            | 5. Speaker      | 9. Antenne                      |
| 2. Microphone            | 6. Name plate   | 10. Battery compartment         |
| 3. Camera lens           | 7. Call button  | 11. Screw                       |
| 4. Night vision lighting | 8. Light sensor | 12. Power and locking connector |

Installation and setup

Always test the product on site before installation.  
Be aware that different materials in between the Outdoor Intercom and Indoor Monitor will affect the operating performance of the product.  
Follow the Wiring and pairing guides to test the product.  
Install the Outdoor Intercom in a dry location if possible.  
Mount the Intercom at a suitable height and position to allow the camera to see the visitor

Battery setup:

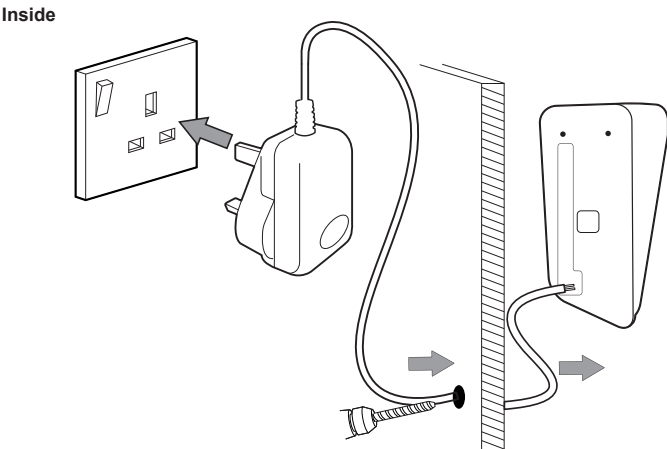
Outdoors intercom

1. On the back of the intercom, remove the 6 screws on the battery compartment, and remove the cover
2. Insert the battery pack into the compartment, making sure it is positioned correctly, with the marking "Rechargeable Li-Ion battery" facing you.
3. Replace the battery compartment cover and insert the 6 screws.

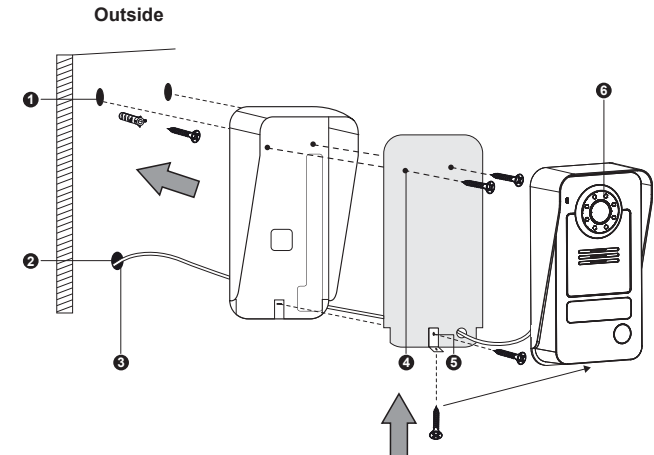
Indoor Monitor

1. On the back of the indoor monitor, open the battery compartment cover pulling towards you.
2. Insert the battery pack into the compartment, making sure it is positioned correctly, with the marking "Rechargeable Li-Ion battery" facing you.
3. Replace the compartment cover.

Outdoor intercom wall support



1. Select the location of the outdoor intercom, use the rain cover as a template and drill the holes to mount the plugs.
2. Mark and drill the hole in order to feed the electric cables through the wall.
3. Push the electric cables so that they are visible from the outside.
4. Glue the seal inside the rain cover.

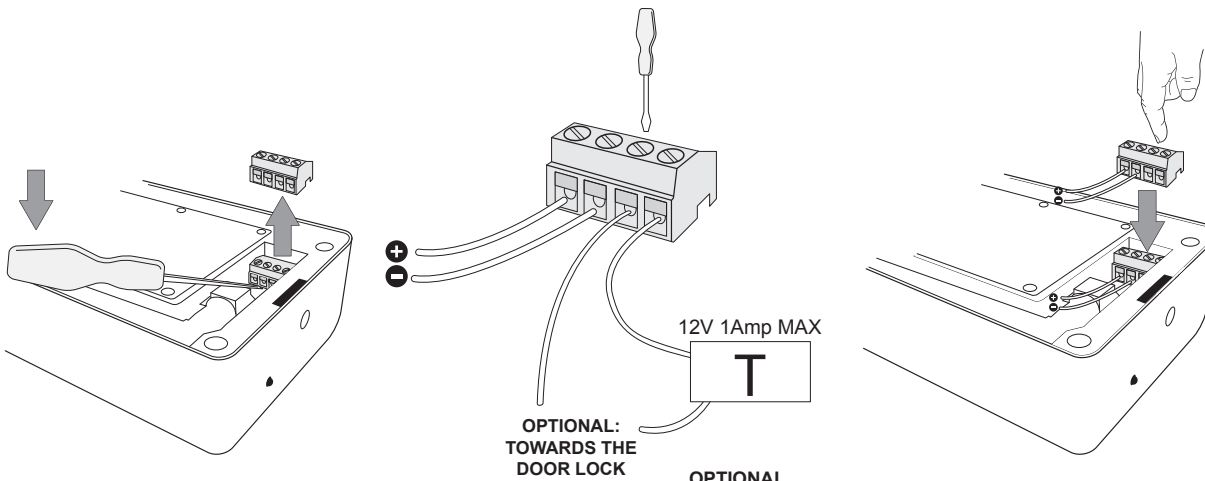


5. Mount the rain cover with the mounting hardware included. Pay attention to the mounting bracket on the lower support, making sure the electric cables will fit through the joining opening of the back plate in the lower corner.
6. Link the intercom electric cables as shown on the wiring diagram below.
7. Firstly, insert the upper part of the intercom into the rain cover and place the lower part on the angled support.
8. Secure the intercom in place on the rain cover using the securing screws.

Name plate

- Name plate
1. If you need to fill the name plate, push strongly on the left side whilst sliding the plate to the left in order to free the right side and then remove it.
  2. Use a pointy object to remove the name plate from the inside of the plate and fill-in your details.
  3. Then, replace the label and follow the same steps in the opposite order to reassemble the plate in the outdoor unit.

Wiring

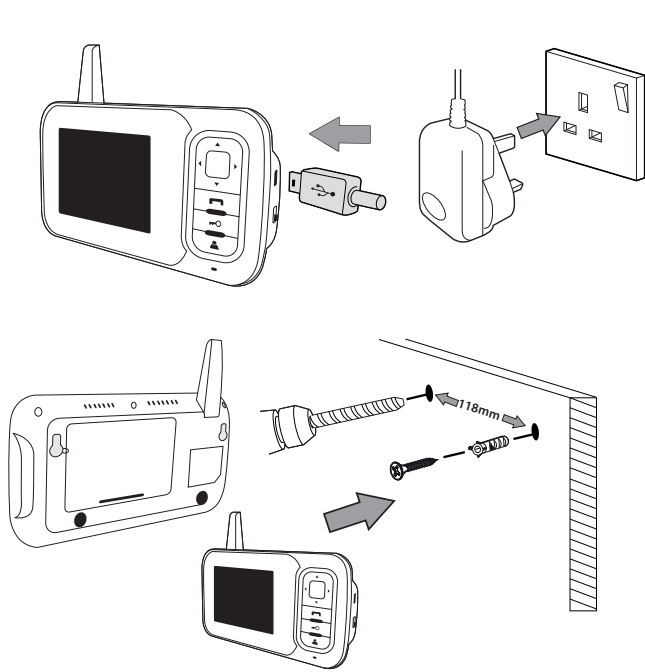


1. With a small screw driver, push the connexion bloc upwards on the outdoor intercom in order to detach it.
2. Connect the DC power supply to the terminals marked + and -, checking that the wires are linked correctly.

OPTIONAL

3. If required, connect the door lock cables to the 2 terminals, checking the correct power supply to the door lock (only for an electric door lock, max. 12 V, 1 A, through a separate power plug - NOT INCLUDED).
4. Replace the connector in the outdoor intercom, making sure the polarity is correct.

Recharge and wall mounting of the indoor monitor

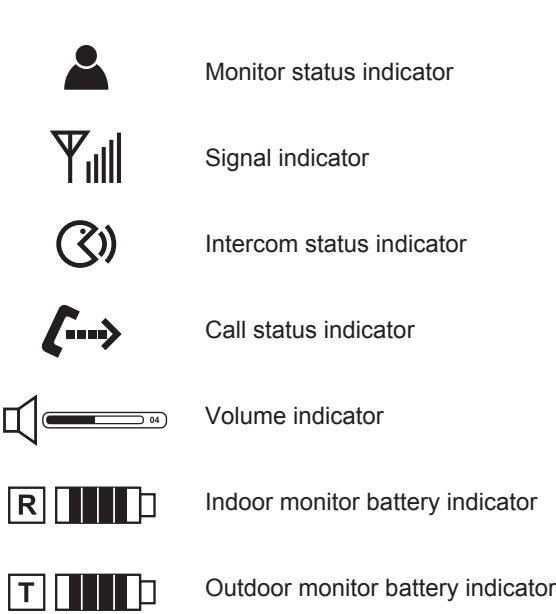


Pairing and light indicators description

The outdoor intercom is fitted with a light indication behind the name plaque, it shows:  
If it is off, the unit is only powered by battery (standby mode)  
If it is RED, the DOWN button (7) is depressed  
If it is BLUE, the unit is powered by the adaptor during the nigh (standy mode)  
If it is RED/BLUE, the DOWN button (7) is depressed during the night

- The indoor monitor is fitted with a light indication, it shows:  
If it is off, standby mode  
If it is RED, the unit is charging  
If it is GREEN/YELLOW, somebody is ringing  
If it is BLUE, you are talking to a visitor  
If it is GREEN/YELLOW, you are listening to the visitor
1. Push the monitor button (10) to turn on the screen
  2. Press and hold the intercom button (8) pressed for 2 to 10 seconds and a pairing picture appears on the screen
  3. Press briefly the DOWN button (7) on the outdoor intercom to turn it on
  4. KEEP pressing the DOWN button (7) on the indoor intercom
  5. A check appears on the screen to show that the pairing is finished.
  6. If the pairing failed, a cross appears, repeat operations 2 , 3 + 4.

Screen icons



Operation

- Intercom:**  
When a visitor pushes the DOWN button on the outdoor camera, the indoor monitor activates the doorbell and the monitor screen. The monitor screen transmits automatically the image of the visitor. Push the intercom button (8) and talk to the visitor.  
Push TWICE on the monitor button (10) and the screen goes into standby mode.
- Monitor:**  
The monitor button (10) can be used to turn the screen on and access its functions. You can use this button to see who is behind the door if the outdoor DOWN button hasn't been pushed. This function only works if the outdoor intercom is powered on the mains.

**Unlock:**  
Once the visitor is identified, push the door lock button (9) to unlock the door. (Only for opening an electric door, max 12 V 1 A , from an external separated power supply, NOT INCLUDED).

- Taking a photo:**
1. When a visitor pushes the DOWN button on the outdoor intercom, the indoor monitor automatically takes a photo.
  2. On the indoor monitor, press the OK/Photo button (6) in order to take another picture of the visitor.
- View the photo:**
1. On the indoor monitor, press the Up (3) or DOWN (7) button to view the recorded photo.
  2. Press the right button (5) pour display the deletion dialog box. Press the OK/Photo (6) button to confirm.
  3. Push the intercom button (8) to quit.

- Doorbell ring setup:**
1. Push the monitor button (10) to turn on the screen
  2. Press the Left (4) or Right (5) button to select the doorbell
  3. Push the monitor button (10) to quit.
  4. You can choose between 16 melodies.

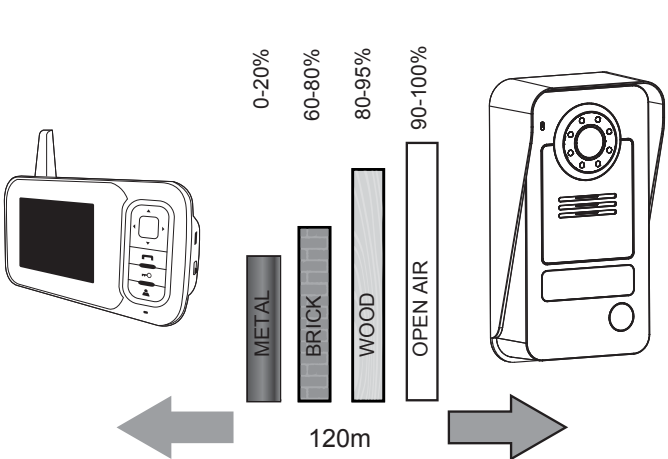
- Doorbell volume setup:**
1. Press the DOWN button (7) on the indoor intercom
  2. Push the monitor button (8) to activate the screen
  3. Press the Left (4) or Right (5) button to select the volume
- Monitor brightness setup:**
1. Press the DOWN button (7) on the indoor intercom
  2. Push the monitor button (8) to activate the screen
  3. Press the Up (3) or DOWN (7) button to select the brightness

- Date and time setup:**
1. Push the monitor button (10) to turn on the screen
  2. KEEP pressing the OK/Photo (6) button for 10 seconds in order to access the time setup
  3. Press the Left (4) or Right (5) button to select an item
  4. Press the Up (3) or DOWN (7) button to adjust the value
  5. Press the OK/Photo (6) button to confirm and quit.

Troubleshooting

- Troubleshooting:**
- If the doorbell doesn't ring, check the points below:
1. Used batteries in the push-button or in the doorbell.
  2. Wrong battery polarity in the push-button or in the doorbell.
  3. For the pluggable doorbells, make sure the wall socket is powered.
  4. The pushbutton and the doorbell are not paired, see the setup guide.
  5. Material between the pushbutton and the doorbell reduce the operational range, move the doorbell closer to the pushbutton.
  6. The wireless devices may be affected by external sources such as wireless domestic alarms or electrical adapter/transformer.

MATERIAL RANGE GUIDE



Test the doorbell before drilling the holes in order to check if the unit is within the working range.

The wireless working range may be affected by some materials or structures. Test before installation.

More details

Technical specifications

<b>Specifications :</b>	
Operating frequency	: 2400-2483.5MHz
Transmission rate	: 15-25fps
Operating rate without obstacles	: 120m
Transmitted power	: 14 - 18dBm
Reception sensitivity	: -85dBm
Operating temperature	: -10°c - +50°c
Operating humidity	: ≤85% RH
<b>Outdoors intercom P513T</b>	
Picture sensor type	: CMOS
Viewing angle	: 45°
Power supply	: DC 5V 1A
Battery	: 3.7V / 1500mAh
Power consumption	: 300 ± 50mA
Recharge time	: Approx. 5 hours
Operating time	: 5 operations per day - 20 days before recharge
Adapter	INPUT: 100-240V~50/60Hz 0.3A OUTPUT: 5.0V  1.0A
<b>Indoor Monitor M335T</b>	
Screen size	: 3.5"
Resolution	: 320 x 240 (RGB)
Power supply	: DC 5V 1A
Battery	: 3.7V / 1500mAh
Power consumption	: 350 ± 50mA
Recharge time	: Approx. 5 hours
Image format	: JPEG
Operating time	: 5 operations per day - 20 days before recharge
Adapter	INPUT: 100-240V~50/60Hz 0.3A OUTPUT: 5.0V  1.0A

NOTES

Do not leave the product on uneven surfaces to prevent damage cause by falling. Avoid placing the product on hot, dusty or humid surfaces, exposed to sea salt and weather since the life of the device will be reduced. The device must not be exposed to splashing or other liquids, and no object containing water, such as vases, must be placed on the device. When the DC adapter is used as a safety device, it must remain easily accessible. CAUTION Explosion risk if the battery is not replaced properly. Only replace the battery with a similar battery or a battery of similar type. The battery must not be exposed to excessive heat, such as sun light, fire or similar.

Complies to all relevant European directives.

Smartwares declares the device, model [VD38W], complies with the requirements of the R&TTE, 1999/5/CE directive. The compliance statement is available upon request to:

smartwares® safety & lighting BV.	NL : 0900-2088888	Lokaal tarief
	BE : 070-233031	(NL) Lokaal tarief
	FR : 0825 560 650	15ct/min
	FR : 0800-97570	(FR) Gratuit
Jules Verneveg 87 5015 BH Tilburg The Netherlands	DE : +49 (0) 1805 010762	
	14Ct/Min. dt. Festnetz	
	Mobil max. 42Ct/Min	
	UK: +44 (0) 345 230 1231	
service.smartwares.eu	ES : +34 938427589	

Frequency 2.4GHz

Security information

Precaution

- ☒ Do not cover the ventilation openings with objects such as newspaper, table cloths, curtains, etc.
- ☒ Do not allow this product to get directly into contact with heat sources or naked flames.
- ☒ The normal operation of the product may be disturbed by strong electro-magnetic interference.
- ☒ This equipment is built exclusively for a domestic use.
- ☒ The device must not be exposed to splashes and it must not be submerged.
- ☒ No object containing liquids, such as a vase, may be placed on the device.
- ☒ Maintain a minimum safety distance of 10cm all around the product in order to insure proper ventilation.
- ☒ Insure the doorbell push button is not installed where it may be covered by water or rain.
- ☒ Do not allow children to play with the device.

Warning about batteries

- ☒ Only an adult may replace and install batteries.
- ☒ Remove used batteries from this device.
- ☒ Do not dispose of batteries in fire,they may explode or leak.
- ☒ Do not short-circuit battery terminals.
- ☒ DO not use any other type of battery other than the rechargeable pack supplied or similar.
- ☒ Do not allow this device to get directly into contact with heat sources or flames.
- ☒ Do not allow water to enter into contact with the batteries or the wires.
- ☒ Install with caution to avoid damaging the batteries.
- ☒ During battery installation in their compartment, insure proper polarity (+) / (-).
- ☒ Only use recommended batteries.
- ☒ Remove the batteries if the device remains unused for long periods.
- ☒ Keep the device away from small children.
- ☒ Keep the unused batteries in their original packaging.
- ☒ At the end of its life, this product must be returned to a waste processing center in order to extract the batteries.