

*The switch drawings in this document are for illustration only and may not match your particular switch model.*

For more detailed instructions and information to set up your switch, view or download the *Installation and Getting Started Guide* for your switch at [www.hp.com/networking/support](http://www.hp.com/networking/support).

---

## 1. Unpack and check included parts.

- Documentation kit
- Switch
- Console port serial cable (DB-9 to RJ-45)
- Accessory kit (installation hardware)
- AC power cord

---

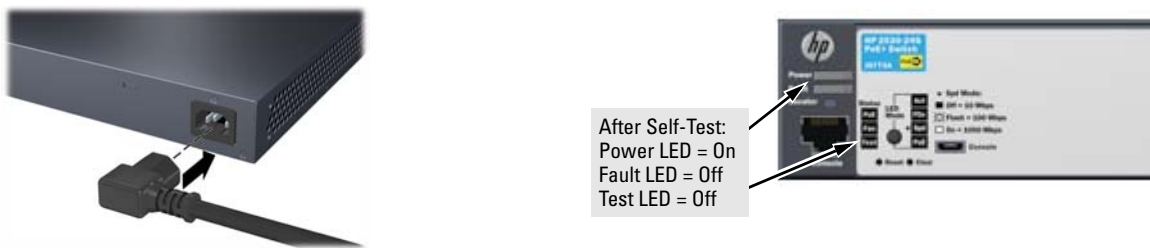
## 2. Prepare for installation.

To avoid personal injury or product damage, review the “Safety and Regulatory Information for HP 2530 24/48-Port Switches” on page 3.

---

## 3. Power on and verify that Self-Test completes normally.

The switch does not contain a power switch. It is powered on by connecting power through the AC power cord.

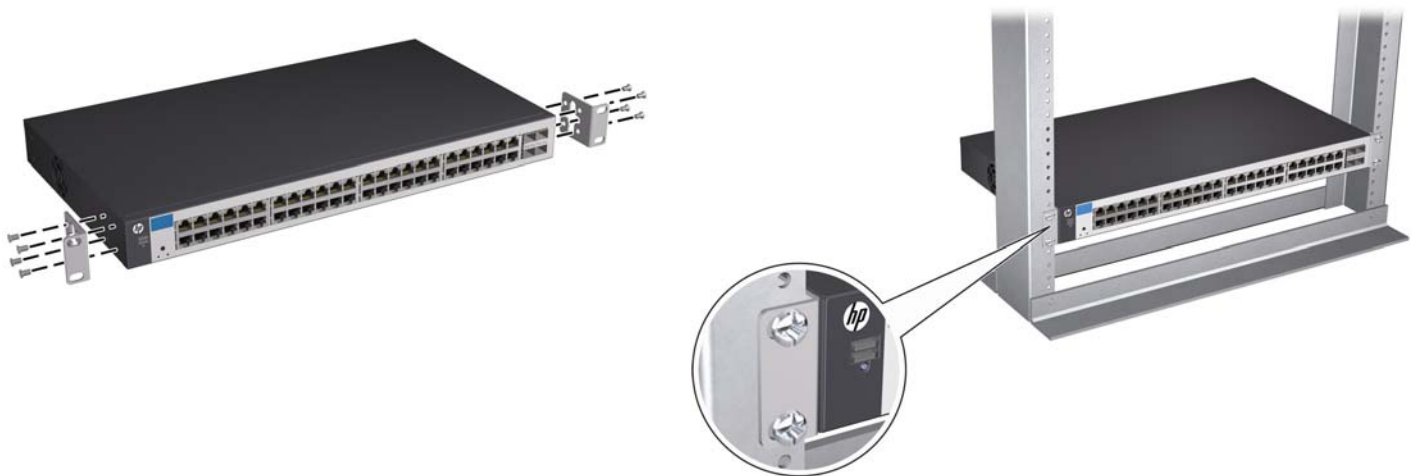


---

## 4. Install the Switch Hardware.

Unplug the AC power from the switch before installing the switch hardware.

**Rack Mounting:** Use a #1 Phillips (cross-head) screwdriver to attach the accessory kit brackets to the switch using the eight 8-mm M4 screws. Then use the four number 12-24 screws to secure the brackets to the rack.



**Note:** The HP 2530 24-port and 48-port switches can also be mounted in 4-post racks and cabinets by using the HP X410 Switch Rail Kit (J9583A). For instructions on using the kit, see the documentation that is included with the kit.

**Table or Desktop Mounting:** Attach the four self-adhesive pads (included in the accessory kit) to the bottom corners of the switch and place the switch on a secure horizontal surface.

---

#### 4. Install the Switch Hardware (Continued)

**Wall or Under-Table:** Use a #1 Phillips (cross-head) screwdriver to attach the supplied brackets to the switch using the eight 8-mm M4 screws in the orientation shown.

For wall-mounting, the network ports must be facing up or down. Do *not* mount the switch with ventilation or fan ducts facing up or down. (See “Installation Precautions” on page 3.)

Attach the switch to the wall or wood surface with four 5/8-inch number 12 wood or tap screws (not included).



---

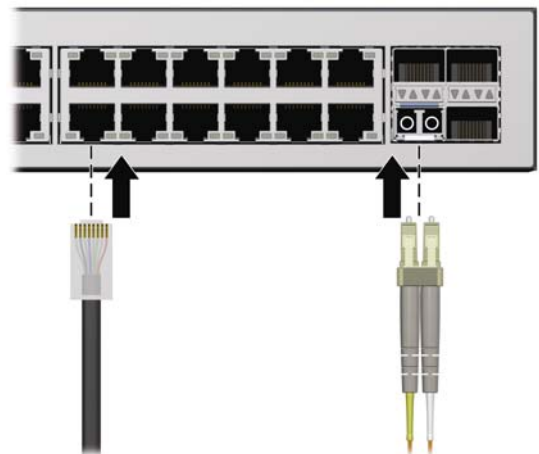
#### 5. Power On the Switch. As shown in step 3.

---

#### 6. Connect Network Cables.

**Note:** For transceiver connections, install and use only HP SFP transceivers supported by the switch.

See “SFP Installation Notes” on page 3.



---

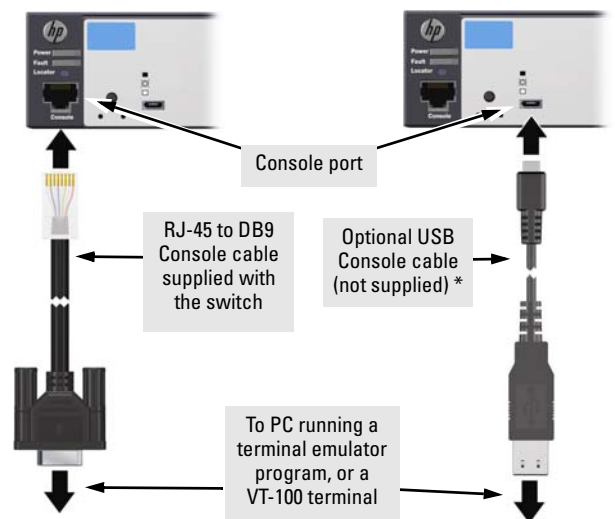
#### 7. (Optional) Configure the Switch for Management.

By factory default, the switch will automatically obtain its IP network configuration from a DHCP or BootP server. Subsequently, you can determine the IP address assigned to the switch by inspecting your DHCP/BootP server, or by using LLDP from a connected device.

You can also manage and configure the switch through a console port connection. Connect a VT-100 terminal or PC (with suitable terminal emulation software) to the switch using the serial cable (DB-9 and RJ-45 connectors) supplied with the switch.

\* **Note:** You can also connect a console to the switch via the USB console port (cable not provided). Use a USB 2.0 high-speed cable with a male type A (4-pin) to male micro-B (5-pin) connector. Maximum allowable length is 5m. For more information on using the USB console port, see the *Installation and Getting Started Guide* for your switch.

For information on configuration and remote management, see the *Management and Configuration Guide* for your switch. The manuals are available at [www.hp.com/networking/support](http://www.hp.com/networking/support).



## SFP Installation Notes

- **Use only genuine HP SFPs.** Non-HP SFP transceivers are not supported. Use of genuine HP products ensures that your network maintains optimal performance and reliability. Should you require additional transceivers, please contact an HP sales representative or an authorized reseller.
- **Hot Swapping SFP transceivers.** Supported SFP transceivers that you can install in your HP switch can be “hot swapped” – removed and installed while the switch is receiving power. *You should disconnect the network cables from the SFP transceivers before hot-swapping them, though.*  
When you replace a SFP transceiver with another of a different type, the switch may retain selected port-specific configuration settings that were configured for the replaced unit. Be sure to validate or reconfigure port settings as required.
- **SFP Connections to Devices with Fixed Speed/Duplex Configurations.** When connecting a device to your switch port that contains an SFP transceiver, the speed and duplex settings of the switch port and the connected device must match; otherwise, the device may not link properly — you may not get a link. For some older network devices, including some older HP devices, the default speed/duplex settings may be predefined (for example, to 1000 Mbps/Full Duplex), or otherwise set differently from the default configuration of your switch port. Because of these default speed/duplex considerations, you should make sure that devices connected to your SFP ports are properly configured. *At a minimum, make sure the configurations match.*
- **Environmental limitations.** If using SFPs with the switch, make sure that the operating temperature range at the switch installation site does not exceed the range allowed for the SFP.

## Safety and Regulatory Information for HP 2530 24/48-Port Switches

To avoid personal injury or product damage when installing your switch, read the installation precautions and guidelines below.

### Installation Precautions

#### Warnings

- **The rack or cabinet should be adequately secured to prevent it from becoming unstable, tilting or falling.**  
Devices installed in a rack or cabinet should be mounted as low as possible, with the heaviest devices at the bottom and progressively lighter devices above.
- **Do not wall-mount any switch without checking for restrictions in the *Installation and Getting Started Guide*.**  
Wall-mount the switch with network ports facing up or down (away from or toward the floor). Do *not* wall-mount the switch with the ventilation or fan ducts facing up or down.

#### Cautions

- Ensure the power source circuits are properly grounded, then use the power cord supplied with the switch to connect to the AC power source.
- If your installation requires a different power cord than the one supplied with the switch and/or power supply, be sure the cord is adequately sized for the switch's current requirements. In addition, be sure to use a power cord displaying the mark of the safety agency that defines the regulations for power cords in your country/region. The mark is your assurance that the power cord can be used safely with the switch and power supply.
- When installing the switch, the AC outlet should be near the switch and should be easily accessible in case the switch must be powered off.
- Ensure the switch does not overload the power circuits, wiring, and over-current protection. To determine the possibility of overloading the supply circuits, add together the ampere ratings of all devices installed on the same circuit as the switch and compare the total with the rating limit for the circuit. The maximum ampere ratings are usually printed on the devices near the AC power connectors.
- Do not install the switch in an environment where the operating ambient temperature exceeds its specification.
- Ensure the air flow around the switch is not restricted. Leave at least 7.6 cm (3 inches) for cooling. For the air flow direction, see the *Installation and Getting Started Guide* for your product, located on the HP Networking web site at [www.hp.com/networking/support](http://www.hp.com/networking/support).

For additional safety and regulatory information, and switch recycling information, refer to the safety and regulatory documentation on the HP web site at [www.hp.com/support/Safety-Compliance-EnterpriseProducts](http://www.hp.com/support/Safety-Compliance-EnterpriseProducts), and to the *HP 2530 Switch Installation and Getting Started Guide* that can be found on the HP Networking web site: [www.hp.com/networking/support](http://www.hp.com/networking/support).

## Product Specifications

	2530-24G Switch (J9776A)	2530-48G Switch (J9775A)	2530-24G-PoE+ Switch (J9773A)	2530-48G-PoE+ Switch (J9772A)
<b>Electrical: *</b>				
AC voltage:	100-127 V / 200-240 V	100-127 V / 200-240 V	100-127 V / 200-240 V	100-127 V / 200-240 V
Maximum current:	0.60 A / 0.37 A	1.20 A / 0.68 A	3.20 A / 1.60 A	5.80-4.50 A / 2.90-2.40 A
Frequency range:	50 / 60 Hz	50 / 60 Hz	50 / 60 Hz	50 / 60 Hz
<b>Acoustics:</b>	Geraeuschemission LpA=34.0 dB am fiktiven Arbeitsplatz nach DIN 45635 T.19 Noise Emission LpA=34.0 dB at virtual workspace according to DIN 45635 T.19	Geraeuschemission LpA=34.5 dB am fiktiven Arbeitsplatz nach DIN 45635 T.19 Noise Emission LpA=34.5 dB at virtual workspace according to DIN 45635 T.19	Geraeuschemission LpA=43.9 dB am fiktiven Arbeitsplatz nach DIN 45635 T.19 Noise Emission LpA=43.9 dB at virtual workspace according to DIN 45635 T.19	Geraeuschemission LpA=43.6 dB am fiktiven Arbeitsplatz nach DIN 45635 T.19 Noise Emission LpA=43.6 dB at virtual workspace according to DIN 45635 T.19
	2530-24 Switch (J9782A)	2530-48 Switch (J9781A)	2530-24-PoE+ Switch (J9779A)	2530-48-PoE+ Switch (J9778A)
<b>Electrical: *</b>				
AC voltage:	100-127 V / 200-240 V	100-127 V / 200-240 V	100-127 V / 200-240 V	100-127 V / 200-240 V
Maximum current:	0.30 A / 0.20 A	0.70 A / 0.40 A	2.80 A / 1.40 A	5.20-4.10 A / 2.60-2.20 A
Frequency range:	50 / 60 Hz	50 / 60 Hz	50 / 60 Hz	50 / 60 Hz
<b>Acoustics:</b>	No fan	No fan	Geraeuschemission LpA=40.1 dB am fiktiven Arbeitsplatz nach DIN 45635 T.19 Noise Emission LpA=40.1 dB at virtual workspace according to DIN 45635 T.19	Geraeuschemission LpA=43.1 dB am fiktiven Arbeitsplatz nach DIN 45635 T.19 Noise Emission LpA=43.1 dB at virtual workspace according to DIN 45635 T.19
* The HP 2530 switches automatically adjust to any voltage between 100-127 and 200-240 volts and either 50 or 60 Hz.				

	All HP 2530 24-Port and 48-Port Switches
<b>Environmental:</b>	
Operating Temperature:	0°C to 45°C (32°F to 113°F)
Relative humidity:	15% to 95% at 40°C (104°F) (non-condensing)
Non-Operating Temperature:	-40°C to 70°C (-40°F to 158°F)
Non-Operating Relative humidity:	15% to 90% at 65°C (149°F) (non-condensing)
Maximum Operating Altitude:	3.0 km (10,000 ft)
Maximum Non-Operating Altitude:	4.6 km (15,000 ft)
<b>Safety:</b>	
Standards:	EN60950-1:2006+A11:2009+A1:2010+A12:2011 / IEC60950-1:2005; Am1:2009; CSA22.2 No. 60950-1-07 2nd; UL60950-1 2nd
Lasers:	EN 60825-1:2007 / IEC 60825-1:2007 Class 1 Class 1 Laser Products / Laser Klasse 1

Russia/CEE Safety:



<b>China Altitude Warning:</b>	1.7.2.1	安全说明和标记	除 J9781A 此型号 其余皆仅适用于海拔 2000m 以下地区安全使用
--------------------------------	---------	---------	---------------------------------------

#### HP 2350 Switches:



#### WARNING

**FOR INDOOR USE ONLY.** The switch, AC power cord, and all connected cables are not designed for outdoor use.

## Power Cord

Use one of the following:

Country/Region	Switch Model	
	HP 2530-24, HP 2530-24-PoE+, HP 2530-24G, HP 2530-24G-PoE+, HP 2530-48, HP 2530-48G, and HP 2530-24G-PoE+ Switches	HP 2530-48-PoE+ and HP 2530-48G-PoE+ Switches <sup>1</sup>
Argentina	8120-6869	8120-8375
Australia/New Zealand	8121-0834	8121-0857
Brazil	8121-1069	8121-1132
Chile	8120-6980	8120-8389
China	8120-8377	8121-1034
Continental Europe	8120-6802	8120-5336
Denmark	8120-6806	8120-5340
India	8121-0780	8120-5341
Israel	8121-1035	8121-1009
Japan	8120-6804	8120-5342
Malaysia	8120-6809	8120-5334
Switzerland	8120-6807	8120-5339
South Africa	8121-0919	8120-5341
South Korea	8120-6811	8120-5336
Taiwan	8121-0964	8121-0967
Thailand	8121-0673	8121-0671
United Kingdom/Hong Kong/Singapore	8120-6809	8120-5334
United States/Canada/Mexico	8120-6805	8121-0973

<sup>1</sup> The power cord for the HP 2530-48-PoE+ and HP 2530-48G-PoE+ Switches supports a higher amperage and uses a C15 connector.

#### Japan Power Cord Warning:

製品には、同梱された電源コードをお使い下さい。  
同梱された電源コードは、他の製品では使用出来ません。

## Important Note for the 2530-PoE+ Switches

For PoE/PoE+ information see the *HP Power over Ethernet (PoE/PoE+) Planning and Implementation Guide* on the HP web site at: [www.hp.com/networking/support](http://www.hp.com/networking/support).

© Copyright 2013 Hewlett-Packard Company, L.P.

The information contained herein is subject to change without notice.



Printed in China

February 2013

5998-3086

