

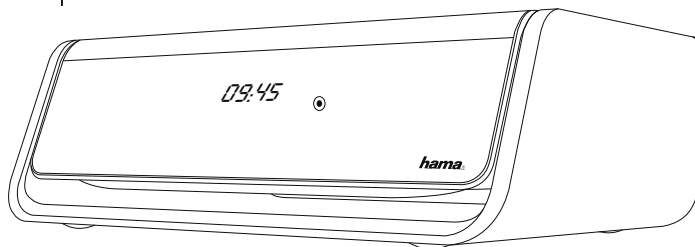
00054822
(DR30)

hama®
THE SMART SOLUTION

Digital Clock Radio

Operation manual

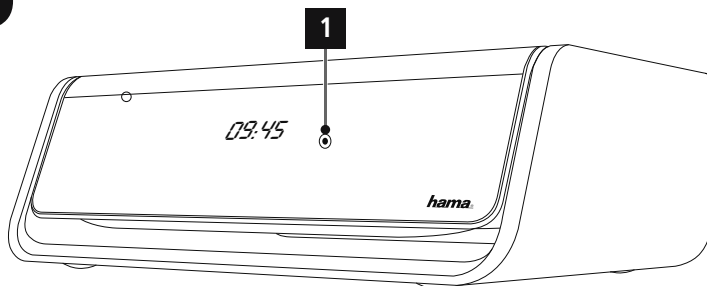
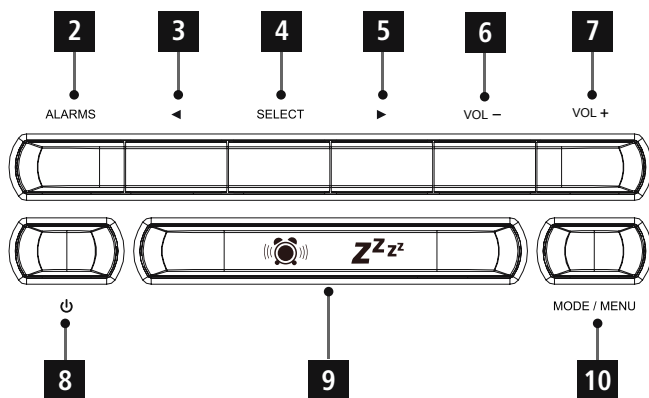
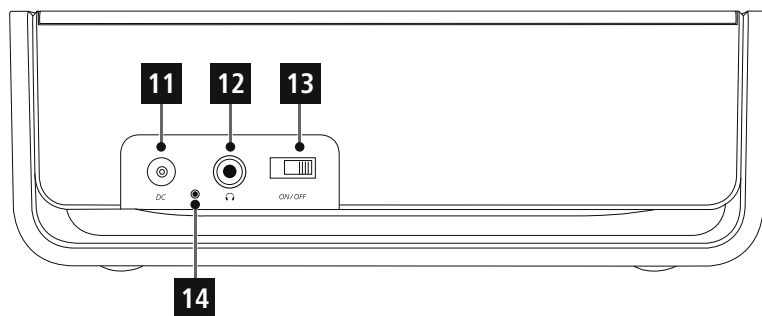
GB





Technical Data / Technische Daten

Radio Receiver/ Radio Empfänger	DAB ✓	DAB+ ✓	FM ✓	Internet -	Spotify -
Display/ Bildschirm	3.3" Liquid Crystal Display (LCD)				
Speaker/ Lautsprecher	1 W RMS				
Power input/ Stromeingang	DC 6 V \pm 500 mA				
Frequency range/ Frequenzbereich	DAB/DAB+: 174~240 MHz		FM: 87.5~108 MHz		
Sensitivity/ Empfindlichkeit	DAB/DAB+: 97~99 dBm		FM: 105~109 dBm		
Power Consumption/ Stromaufnahme	Operation/ Betrieb	max. 3 W	Standby/ Bereitschaft	~ 1 W	
Input & Output/ Anschlüsse	DC Socket, 3.5 mm Earphone Jack				
Presets/ Favoriten	DAB/DAB+: 30	FM: 30			
Codec/ Formate	DAB: MP2, AAC				
UI Languages/ UI Sprachen	English, Danish, Dutch, Finnish, French, German, Italian, Norwegian, Polish, Swedish, Slovak, Czech				
Package Content/ Verpackungsinhalt	Manual, AC-DC Adapter/ Bedienungsanleitung, Netzteil				
Dimension (WxHxD)/ Größe (BxHxT)	185 x 65 x 140 mm				
Weight/ Gewicht	590 g				

A**B****C**

Controls and Displays

A: Front

1		Sensor
---	--	--------

B: Top side

2	[ALARMS]	Direct access to alarm clock settings
3	[◀]	Navigation key left
4	[SELECT]	Confirm
5	[▶]	Navigation key right
6	[VOL -]	Decrease volume
7	[VOL +]	Increase volume
8	[⏻]	On / off switch
9	[🔔 ZzZz]	Timer settings / activating Snooze
10	[MODE / MENU]	Press: Changing operating mode (DAB, FM) Press & hold: Direct access to the menu

B: Rear

11		Mains power supply
12		Headphone socket
13	Auto Dimmer switch	Automatic adjustment from backlight and brightness of surroundings
14		Antenna

Content

1. Explanation of Warning Symbols and Notes ..	5	12. Care and Maintenance	17
2. Package Contents	5	13. Warranty Disclaimer	17
3. Safety notes	5	14. Service and Support.	17
4. Information and notes before getting started	6	15. Recycling Information	
5. Getting started	6	Note on environmental protection:.....	17
5.1 General notes on use	6		
5.2 Initial setup	6		
5.3 Language	7		
6. DAB	7		
6.1 Search/ Automatic search	7		
6.2 Manual station search	8		
6.3 Station list	8		
6.4 Edit station list	9		
6.5 Favourites	9		
6.5.1 Save favourites	9		
6.5.2 Access favourites	10		
6.6 DRC (Dynamic Range Control)	10		
7. FM	11		
7.1 Scan setting	11		
7.2 Automatic station search	11		
7.3 Manual station search	11		
7.4 Favourites	11		
7.4.1 Save favourites	12		
7.4.2 Access favourites	12		
7.5 Audio setting	13		
8. Display/ Additional information	13		
9. Alarms	14		
9.1 Alarm settings	14		
9.2 Activating/ deactivating the alarm	15		
9.3 Stopping the alarm/ Snooze function	15		
10. Sleep	15		
11. Additional settings.....	15		
11.1 Time/ date settings	15		
11.2 Backlight	16		
11.3 Factory Reset	16		
11.4 Info/ Software version	17		

Menu structure

DAB

Preset Recall	
Preset Store	
Display	
	Scrolling text
	Signal strength
	Program Type
	Ensemble
	Frequency
	Signal quality
	Bitrate and Codec
	Format
	Time
	Date
	Service name
Station list	
Full scan	
Manual tune	
DRC	
	DRC off
	DRC high
	DRC low
Prune	
Time	
	Set Time/Date
	Auto update
	Update from Any
	Update from DAB
	Update from FM
	No update
	Set 12/24 hour
	Set 24 hour
	Set 12 hour
	Set date format
	DD-MM-YYYY
	MM-DD-YYYY
Beleuchtung	
	Power on
	High
	Medium
	Low
	Standby
	Low
	High
	Medium
Language	
Factory Reset	
SW version	



FM

Preset Recall	
Preset Store	
Display	Frequency
	Radio text
	Program Type
	Ps
	Audio info
	Time
	Date
Scan setting	All stations
	Strong station
Audio setting	Forced mono
	Stereo allowed
Time	Set Time/Date
	Auto update
	Update from Any
	Update from DAB
	Update from FM
	No update
	Set 12/24 hour
	Set 24 hour
	Set 12 hour
	Set date format
	DD-MM-YYYY
	MM-DD-YYYY
Backlight	Power on
	High
	Medium
	Low
	Standby
	Low
	High
	Medium
Language	
Factory Reset	
SW version	



Thank you for choosing a Hama product. Take your time and read the following instructions and information completely. Please keep these instructions in a safe place for future reference. If you sell the device, please pass these operating instructions on to the new owner.

1. Explanation of Warning Symbols and Notes



Risk of electric shock

This symbol indicates product parts energized with a dangerous voltage of sufficient magnitude to constitute a risk of electric shock.



Warning

This symbol is used to indicate safety instructions or to draw your attention to specific hazards and risks.



Note

This symbol is used to indicate additional information or important notes.

2. Package Contents

- Digital clock radio DR30
- Power supply unit
- Quick guide

3. Safety notes

- The product is intended for private, non-commercial use only.
- Protect the product from dirt, moisture and overheating and use it in dry rooms only.
- As with all electrical devices, this device should be kept out of the reach of children.
- Do not drop the product and do not expose it to any major shocks.
- Do not operate the product outside the power limits given in the specifications.
- Keep the packaging material out of the reach of children due to the risk of suffocation.
- Dispose of packaging material immediately according to locally applicable regulations.
- Do not modify the device in any way. Doing so voids the warranty.



Risk of electric shock

- Do not open the device or continue to operate it if it becomes damaged.
- Do not use the product if the AC adapter, adapter cable or power cable is damaged.
- Do not attempt to service or repair the product yourself. Leave any and all service work to qualified experts.



4. Information and notes before getting started

Note – Optimal reception

- For best reception, ensure that the antenna is fully extended.
- Try various different positions if necessary to get the best reception.

5. Getting started

Connect the network cable to a properly installed and easily accessible network socket.

The power supply unit is suitable for mains voltages between 100 and 240 V, and is thus operable on almost any AC power grid. Please note that a country-specific adapter may be necessary.

You can find an appropriate selection of Hama products at www.hama.com.

Note

- Only connect the product to a socket that has been approved for the device.
- The electrical socket must always be easily accessible.
- When using a multi-socket power strip, make sure that the sum power draw of all the connected devices does not exceed its maximum throughput rating.
- If you will not be using the product for a long period of time, disconnect it from mains power.

Once the product has been connected to mains power, initialisation takes place. The radio starts up.

5.1 General notes on use

Notes on use

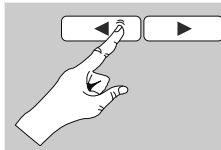
- When a selection among menu items is to be made (such as **Y** or **N**), the one currently selected flashes.
- In menus offering a variety of different options (such as DRC, language and so on), the currently selected option is marked with *****.

Navigation and controls

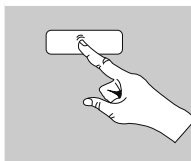
- Select among menu items by pressing the **navigation keys** [◀]/[▶].
- Confirm the selection by pressing [SELECT].

This procedure is indicated in these operating instructions by the following symbols:

selection (navigate)



confirmation (enter)



Some features can be accessed by means of shortcut buttons. Pressing shortcut buttons is indicated here by this symbol.

After pressing a shortcut button, navigate amongst the menu items using the **navigation keys** [◀]/[▶] and [SELECT].

Volume adjustment

- You can turn the volume up/ down by pressing [VOL +]/[VOL -].

Switching on/ off

- Press [⏻], to switch the radio on or off (Standby).
- To completely switch off the device, disconnect it from the power supply.

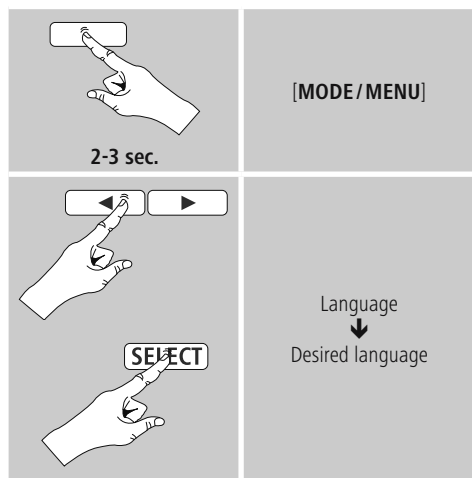
5.2 Initial setup

The station search in the operating mode DAB starts up automatically when the radio is turned on for the first time. By default, the radio starts with the English menu navigation. Set up your desired language as described in

5.3. Language.

5.3 Language

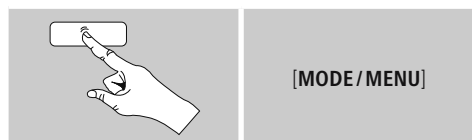
To change the menu language from that selected at first-time startup, proceed as follows:



6. DAB

The radio receives all established digital radio frequencies in the range of 174 MHz (band III, channel 5A to 13F).

- Press [MODE/MENU] repeatedly to activate operating mode DAB:

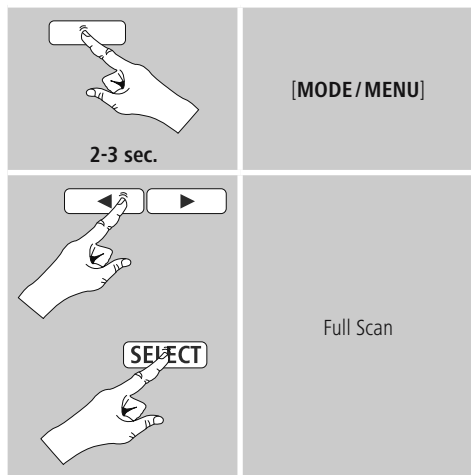


The display shows **DAB** top left in operating mode **DAB**.

6.1 Search/ Automatic search

The automatic DAB channel search scans the DAB band III for available stations. After the station search, all interference-free stations are saved in alphabetical order. The automatic DAB station search starts automatically when DAB mode is started for the first time; it is indicated by **Scanning...** on the display.

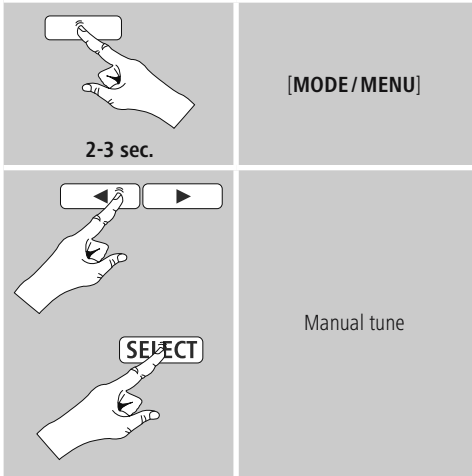
If you would like to start the search again, proceed as follows:



6.2 Manual station search

With the manual station search function you can search through individual frequencies and channels. If you know the frequency of the desired station and the automatic station search failed to find it, use this feature to set the reception frequency directly.

Proceed as follows, choosing a frequency range between 5A and 13F:



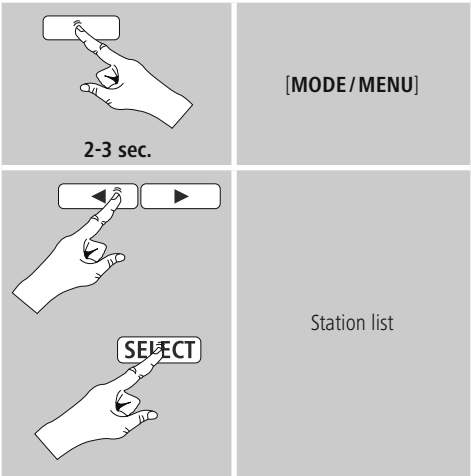
The bar indicates the current signal strength. The marking along the bar indicates the value required for interference-free reception. If this value is not reached (the bar is empty), then the signal strength is not sufficient on this channel.

6.3 Station list

You can access the station list in DAB mode at any time via two methods:

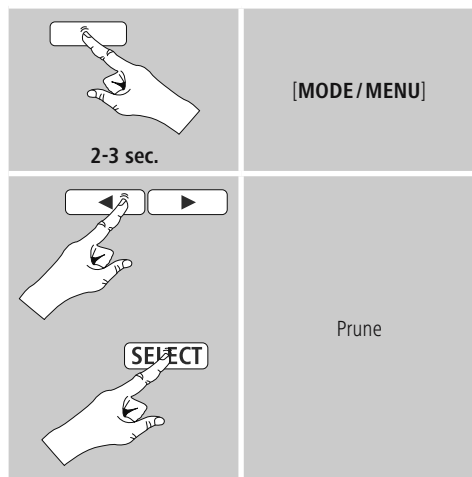
a) If a station is already playing, simply press the **navigation keys** [◀]/[▶]. The radio will then display the station list.

b)



6.4 Edit station list

To remove stations that are not currently in the reception area, from your station list, proceed as follows:



If you answer **Y**, then all currently unavailable stations will be removed from the station list.

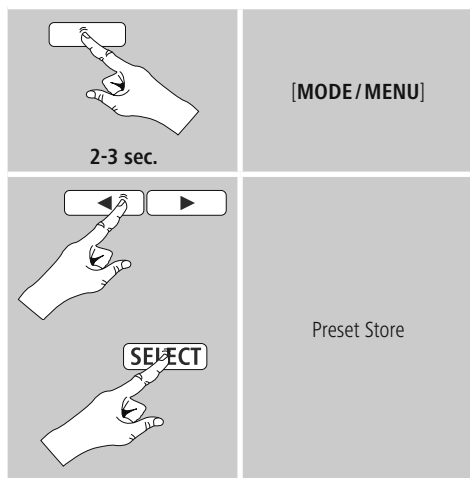
6.5 Favourites

You can save up to 30 of your favourite stations for quick and direct access.

6.5.1 Save favourites

Set the station that you would like to save as a favourite station preset.

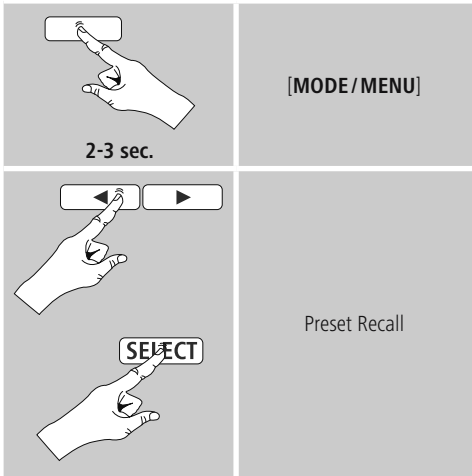
If the station is received, proceed as follows:




- You can switch between the station presets (1 to 30) by pressing the **navigation keys** [◀]/[▶].
- Press [**SELECT**] to save the station on the desired station preset.

6.5.2 Access favourites

Proceed as follows to open the overview with the list of saved stations.



Use the **navigation keys** [◀]/[▶] and **[SELECT]** to select one of your favourites.

 **Note**

Favourites cannot be deleted.
If all 30 station memory slots are filled and you wish to save a new station, choose one of the occupied slots.
The station in this slot will be overwritten with the new station.

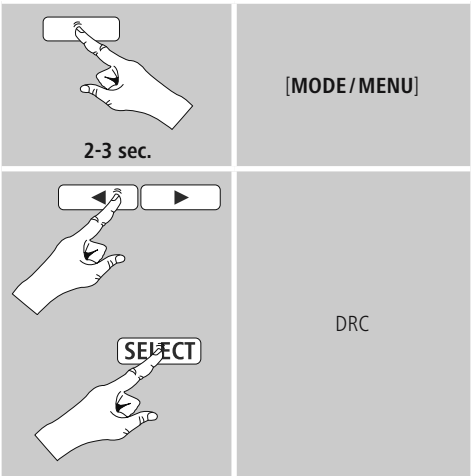
6.6 DRC (Dynamic Range Control)

Some radio stations in the DAB network support an audio level control that is activated at varying volumes during playback. If the audio level suddenly rises during playback, DRC automatically reduces the volume. The same happens if playback suddenly becomes quieter, with the radio then increasing the volume.
This radio has three different settings for DRC:

- DRC high:**
total equalisation of different volumes. Strong compression can audibly reduce the dynamics of a music title.
- DRC low:**
partial equalisation of different volumes. More subtle compression, without too much loss of dynamics.

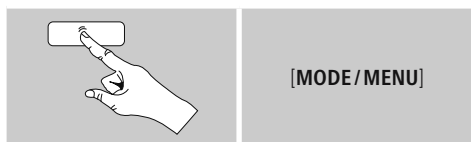
DRC off:
no equalisation.

Proceed as follows to do the settings:



7. FM

Press **[MODE / MENU]** repeatedly to activate operating mode FM:

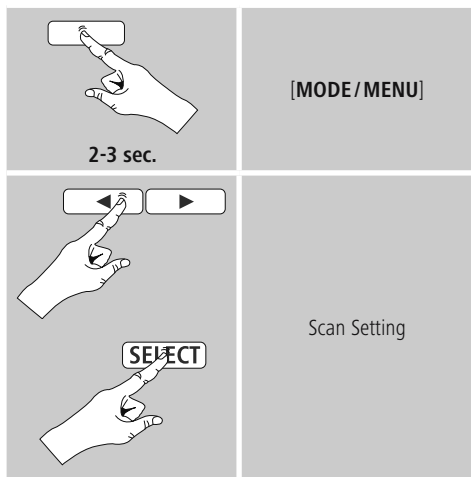


The display shows **FM** top left in operating mode **FM**.

7.1 Scan setting

The search run setting allows you to determine whether stations with low signal strength are ignored during the automatic search run.

Proceed as follows:



To have the search run stop only at stations with high signal strength, select **Strong stations only**. Otherwise (**All stations**), the search run will stop at every station for which a signal is received.

7.2 Automatic station search

- Press and hold one of the **navigation keys** [**◀**]/[**▶**] until the automatic station search starts.
- The radio stops the search and starts playback when it finds a station.
- Press again one of the **navigation keys** [**◀**]/[**▶**] to continue the search until the next station is found.

7.3 Manual station search

When you make station settings manually, you can define the desired frequency yourself and tune into stations that were ignored during automatic station search because their signals were too weak.

- Press the **navigation keys** [**◀**]/[**▶**] ([**▶**]:+ 0.05 MHz / [**◀**]:- 0.05 MHz) until you see the desired frequency. Wait a moment until playback of the received station signal begins.

7.4 Favourites

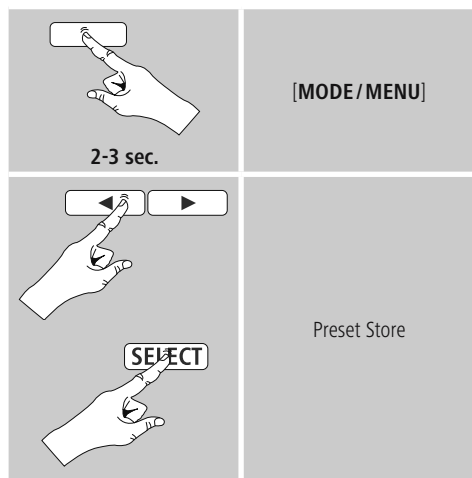
You can save up to 30 of your favourite stations for quick and direct access.



7.4.1 Save favourites

Set the station that you would like to save as a favourite station preset.

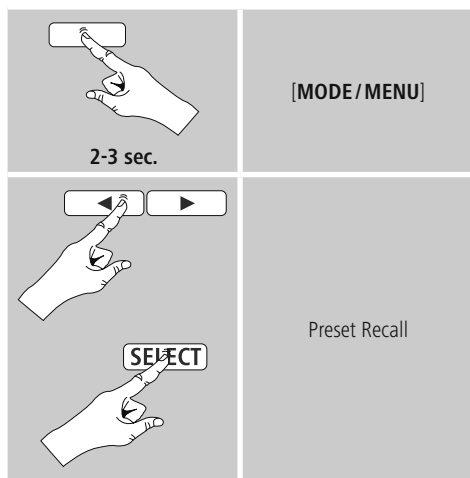
If the station is received, proceed as follows:



- You can switch between the station presets (1 to 30) by pressing the **navigation keys** [◀]/[▶].
- Press [SELECT] to save the station on the desired station preset.

7.4.2 Access favourites

Proceed as follows to open the overview with the list of saved stations.



Use the **navigation keys** [◀]/[▶] und [SELECT] einen der Favoriten aus.

Note

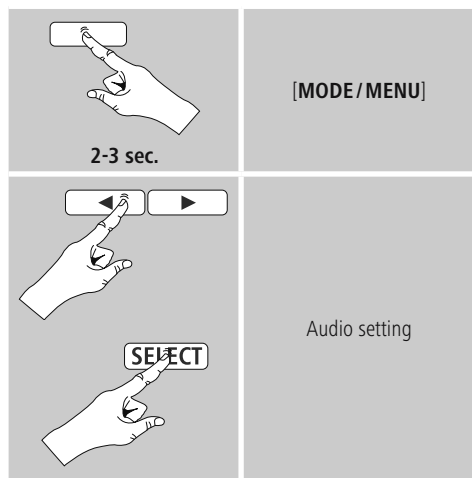
Favourites cannot be deleted.

If all 30 station memory slots are filled and you wish to save a new station, choose one of the occupied slots. The station in this slot will be overwritten with the new station.

7.5 Audio setting

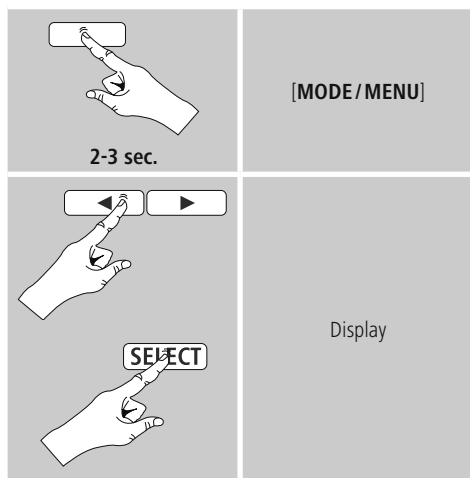
For some stations with a weak signal, quality can be slightly improved by playing them in mono quality. You can enable this function in the menu (**Forced mono**), and the radio will automatically switch to mono reception when signal quality is poor.

To change the audio setting, proceed as follows:



8. Display/Additional information

Proceed as follows to display additional information below the time display. The information shown depends on the operating mode as well as the current selection of radio station.



• Scrolling text (DLS – Dynamic Label Segment)

Indicates the radio station, the current program, contents, subjects, etc.

• Signal strength

The bar indicates the current signal strength. The marking along the bar indicates the value required for interference-free reception. If this value is not reached (the bar is empty), then the signal strength is not sufficient on this channel.

• Program Type

Indicates the type of program, such as Traffic, Pop Music etc.

• Ensemble

An ensemble (also called a multiplex) is a collection of stations that use the same frequency for transmission. Often these stations are all from the same local area or play the same style of music or information.

• Frequency



- **Signal quality**

The signal quality indicates how many data packets are incorrectly received.

- **Bitrate and Codec**

The currently received digital bit rate of the received station is displayed. Specifies the encoding scheme used to digitise the data or signal (such as MP3 or WMA).

- **Format**

- **Time**

Displays the complete time including seconds.

- **Date**

- **Service name**

Displays the name of the current received radio station.

- **Radio text**

- **Ps**

- **Audio info**

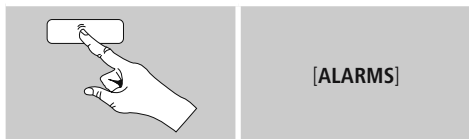
Mono / Stereo

9. Alarms

The radio has two individually adjustable alarm times.

9.1 Alarm settings

You can access the alarm settings as follows:



Alarm1 and alarm 2 are configured identically. So you can save two different alarm times. Select alarm 1 or 2 – by pressing **[ALARMS]** repeatedly and confirm by pressing **[SELECT]** – and make the following settings by means of the **navigation keys** **Navigationstasten** [**◀**]/[**▶**] and **[SELECT]**

Time:

First choose the hour, then the minute at which the alarm is to activate.

Duration:

Choose a time interval (15/30/45/60/90 minutes). The alarm stays switched on for the selected time interval.

Buzz / DAB / FM:

Set whether you wish to be woken by an alarm ton (**Buzz**), by **DAB** or by **FM**.

Program:

If you selected **DAB / FM**, choose which station you wish to be woken with. You can choose any of the 30 favourites station slots or the **Last listened**.

Mode:

Choose when the alarm is to activate: Wählen Sie aus, wann der Wecker aktiviert sein soll:

→ Daily – Once – Weekdays – Weekends

Date:

If you selected **Once**, enter the date for the one-off alarm.

Volume:

You can set the volume at which the alarm sound should be played. This setting makes it irrelevant how loud you last listened to the radio.

Save:

Select **On / off** to complete your alarm settings.



Note

It is recommended to allow the radio to update the time automatically. This ensures that the time is always correct even if there is a separation of power supply – for example a power cut.

9.2 Activating/ deactivating the alarm

- Confirm/ complete the alarm settings with **On** to activate the alarm.
- Confirm/ complete the alarm settings with **Off** to deactivate the alarm.

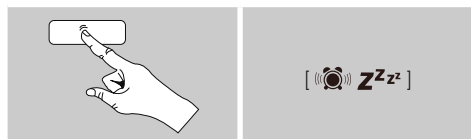
9.3 Stopping the alarm/ Snooze function

- When the alarm activates, press [] to stop the alarm.
- Repeatedly press [ **ZZZZ**] to activate snooze mode.
- The alarm turns off for the selected time interval (5/10 minutes) before activating once again.
- If the alarm is not stopped, the radio automatically switches into standby mode after the selected time interval (Duration).

10. Sleep

The radio has a sleep function, after a defined time the radio switches to standby mode.

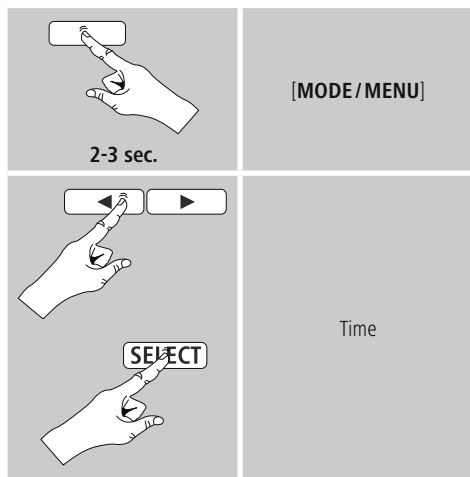
- Repeatedly press [ **ZZZZ**] to set the desired time interval (Sleep off/ 15/30/45/60/90 minutes).




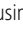
11. Additional settings.

11.1 Time/ date settings

To access the time/ date settings, proceed as follows:



Set Time/ Date

Set the date (**DD-MM-YYYY / MM-DD-YYYY**) and time (**hh:mm**) manually using the **navigation keys** [] / [] and [**SELECT**].

Auto update

• Update from FM/ Update from DAB

If automatic time and date adjustment is activated, the device receives time and date information from the station over the FM/DAB/DAB+ radio network. This is the best way to ensure that the clock will run accurately and the alarm will trigger at the correct time, even after power outages.

• Update from Any

It is recommended to use this setting (Update from FM and DAB) for the auto update.

• No Update

The time and date (**DD-MM-YYYY / MM-DD-YYYY**) must be set manually; no automatic calibration takes place.



Format

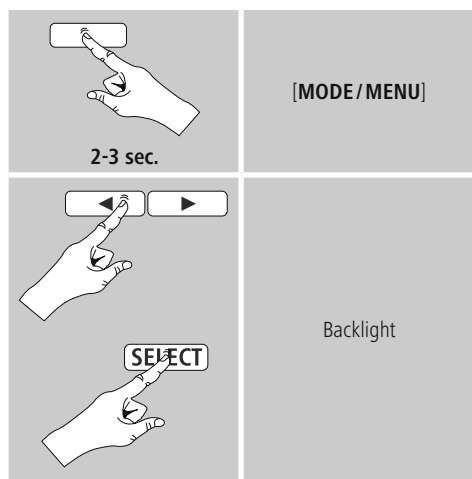
- **Set 12/24 hour**
Choose between 12 and 24 hours format.
- **Set date format**
Choose between the **DD-MM-YYYY** / und **MM-DD-YYYY** date format.

11.2 Backlight

Manual settings

The backlight can be configured for each operating mode (Operation mode, Standby mode) separately.

Proceed as follows:



- For the operation modes Operation mode (**Power on**) and Standby mode (**Standby**), select between various brightness levels.
- When the radio is in standby, press [**Z Z Z**] to illuminate the display at the brightness level set for that operation mode for ca. 10 seconds.
- Move the **Auto Dimmer switch** on the back of the radio to the **OFF** position to deactivate the sensor and to activate the manual settings.

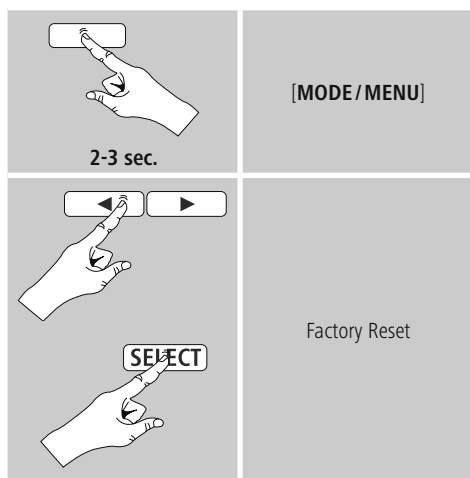
Automatic settings (Sensor)

With the sensor enabled, the backlight is automatically adjusted to the environment and its brightness. In complete darkness (for example, at night in the bedroom), the backlight completely turns off.

- Move the **Auto Dimmer switch** on the rear of the radio to the **ON** position to activate the sensor and to deactivate the manual settings.
- When the radio is in standby, press [**Z Z Z**] to illuminate the display a for ca. 10 seconds.

11.3 Factory Reset

To reset the radio to the factory default settings, proceed as follows:



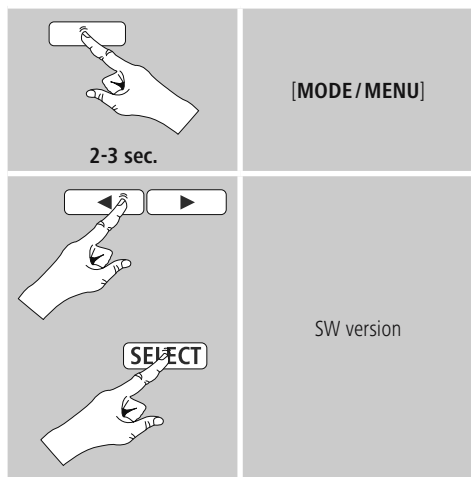
Confirm the following prompt with **Y** to reset the radio to the factory default settings.
All settings made previously are deleted.

Note

- Resetting to the factory default settings can solve some problems and malfunctions.
- However, all settings made previously, such as favourites and station lists, are permanently deleted.

11.4 Info / Software version

To have the radio display information about ist software, proceed as follows:



12. Care and Maintenance

- Only clean this product with a slightly damp, lint-free cloth and do not use aggressive cleaning agents.
- If you do not use the product for a long time, turn off the device and disconnect it from the power supply. Store it in a clean, dry place out of direct sunlight.

13. Warranty Disclaimer

Hama GmbH & Co. KG assumes no liability and provides no warranty for damage resulting from improper installation/ mounting, improper use of the product or from failure to observe the operating instructions and / or safety notes.

14. Service and Support

Please contact Hama Product Consulting if you have any questions about this product.

Hotline: + 49 9091 502-115 (German/English)

Further support information can be found here:

www.hama.com

15. Recycling Information

Note on environmental protection:



After the implementation of the European Directive 2012/19/EU and 2006/66/EU in the national legal system, the following applies: Electric and electronic devices as well as batteries must not be disposed of with household waste. Consumers are obliged by law to return electrical and electronic devices as well as batteries at the end of their service lives to the public collecting points set up for this purpose or point of sale. Details to this are defined by the national law of the respective country. This symbol on the product, the instruction manual or the package indicates that a product is subject to these regulations. By recycling, reusing the materials or other forms of utilizing old devices/ batteries, you are making an important contribution to protecting our environment.



hama®

Hama GmbH & Co KG
86652 Monheim/Germany
www.hama.com

All listed brands are trademarks of the corresponding companies. Errors and omissions excepted,
and subject to technical changes. Our general terms of delivery and payment are applied.