

Quick Start Guide

WRE6606

Wireless AC1300 Range Extender



ZYXEL ENGLISH

Support Information

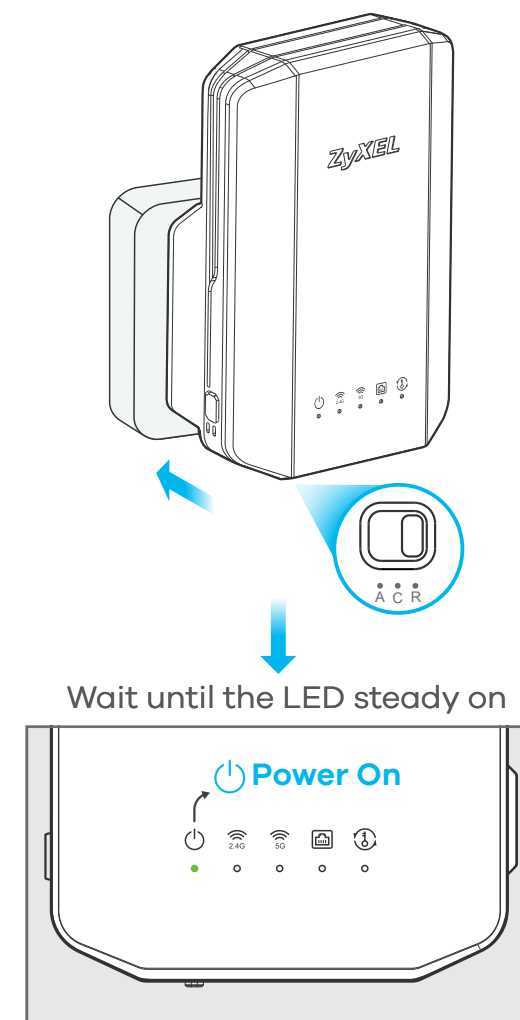
North America +1 800 978 7222
USA support@zyxel.com

See the User's Guide at www.zyxel.com for more information, including customer support and safety warnings.

EU Importer
ZyXel Communications A/S
Generatorsvej 80, 2860 Søborg, Denmark
<http://www.zyxel.dk>

US Importer
ZyXel Communications, Inc
1130 North Miller Street Anaheim, CA 92806-2001
<http://www.us.zyxel.com>

Hardware Installation



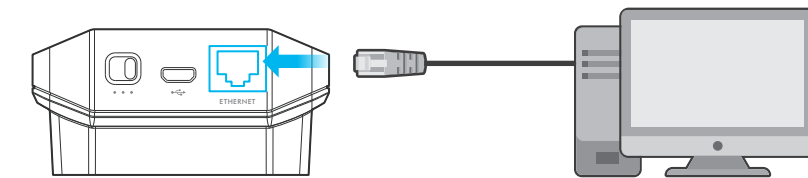
Wait until the LED steady on

- EN Make sure that the WRE6606 switch is set to R (Repeater mode).

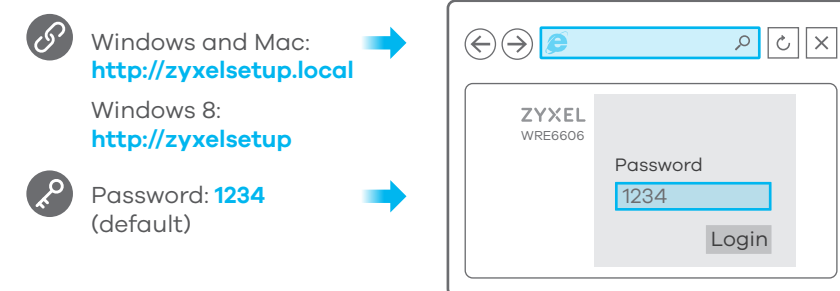
Note down your home wireless router or AP's current wireless network name (SSID) and password in order to connect the WRE6606 to it. Clients also use these to connect to your home wireless router or AP via the WRE6606.

A Initial Configuration / No WPS

A-1



- A-2 Open Web Browser (IE 9.0 and later, Firefox, Chrome)



- EN Note: Use Option A if your wireless router does not support WPS or has WPS compatibility issues. **Initial Configuration - No WPS**

- A-1 First, connect your computer to the WRE6606 using an Ethernet cable. Open your web browser and type <http://zyxelsetup> (Windows) or <http://zyxelsetup.local> (Mac). If you can't connect, check you're using a supported browser version.

eaZy 123 runs automatically the first time you access the WRE6606. If it doesn't open, click the **eaZy 123** icon on the upper right corner of any Web Configurator screen.

A-3 Follow eaZy 123 setup wizard

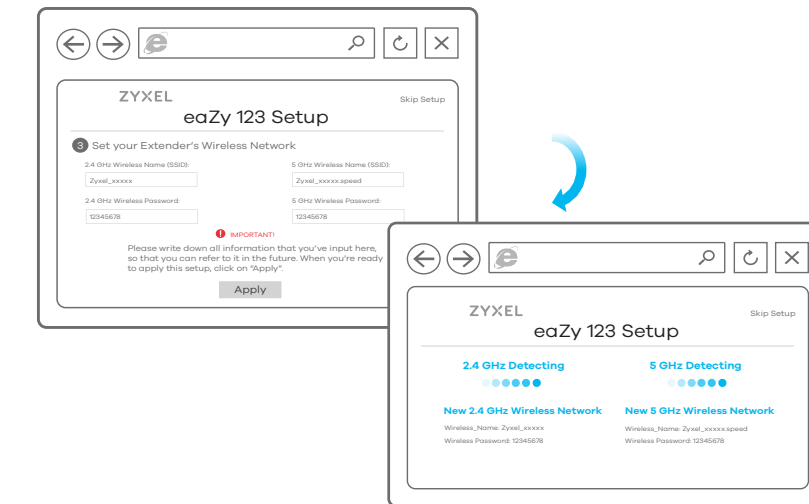


A-4

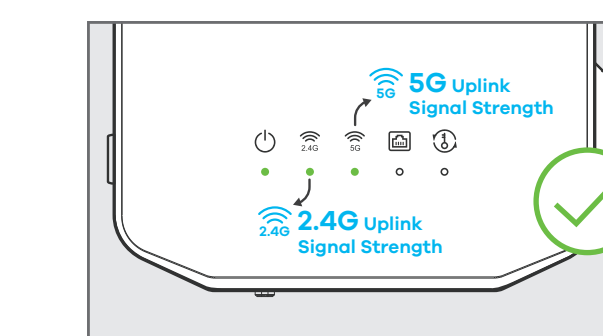
- EN A-3 **eaZy 123** scans for available 2.4 GHz Wi-Fi networks and displays the network list. If you want to associate with a 5 GHz network, click **Skip 2.4 GHz**. In the 2.4 GHz network list, select your home wireless router or AP SSID and enter its Wi-Fi password (key). Click **Continue**. If the wireless router or AP you want to connect to is not listed, click **Choose Network Manually**, then enter the SSID, security type and associated password of your wireless router or AP. Click **Continue**.

- A-4 The 5 GHz network list displays. Repeat previous steps to select and connect to a 5 GHz Wi-Fi network.

A-5



A-6 Check LED Lights

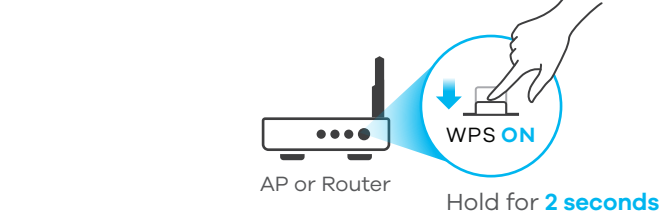


- EN A-5 Make sure that the WRE6606's wireless 2.4G and/or 5G Wi-Fi settings are the same as the Wi-Fi settings on your wireless router or AP.

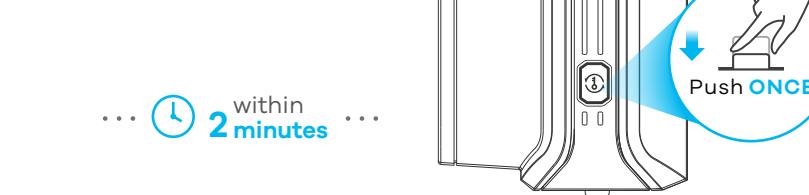
- A-6 Wait for the 2.4G and/or 5G LEDs to light. If the 2.4G or 5G LEDs do not light, the Wi-Fi connection has failed. Check that your wireless router or AP is turned on. Check that your wireless router or AP SSID and password are correct, then reenter them in **eaZy 123**.

B Initial Configuration / WPS

B-1



B-2



B-3



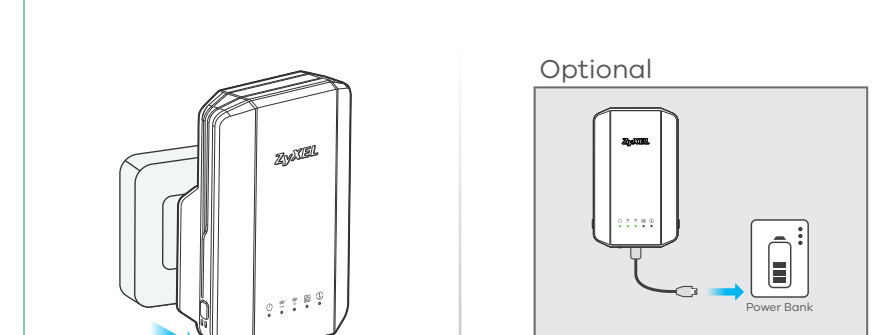
- EN **Initial Configuration - WPS**

- B-1 If your existing wireless router or AP supports WPS, press its WPS button for 2 seconds and then press the WPS button on the WRE6606, within 2 minutes of each other. The WPS LED starts blinking.

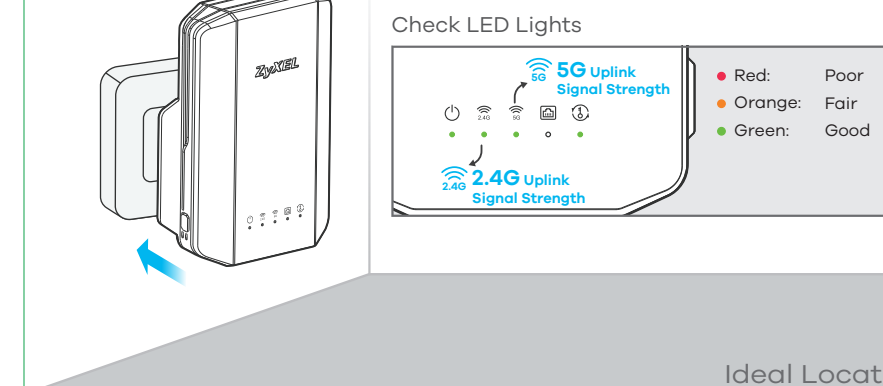
- B-2 Wait for the WPS LED to become steady again, and then check that the 2.4G and/or 5G LEDs light, indicating a secure WRE6606-to-Router Wi-Fi connection. If the 2.4G and/or 5G LEDs do not light, the WRE6606-to-Router Wi-Fi connection using WPS has failed. Use the **No WPS** method.

Finding the Ideal Location

1



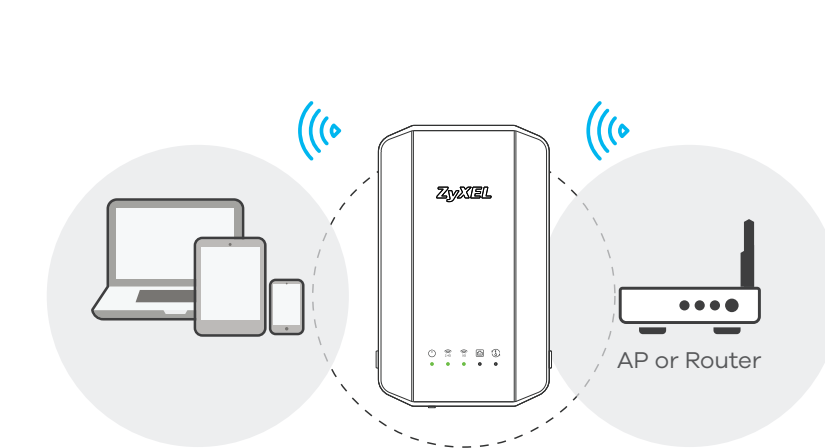
2



- EN Next you want to position the WRE6606 mid-way between your wireless router or AP and the Wi-Fi dead zone where the wireless clients are.

- 1 Disconnect the WRE6606.
- 1 **Tip:** Connect a power bank (portable charger) with DC 5V/2.1A output to the WRE6606's micro-USB port, so that you can carry the WRE6606 around the house to determine the best deployment location. You want the WRE6606 to be close enough to the clients so that the signal is strong enough to be repeated.

- When you have found a good location, plug the WRE6606 into a nearby outlet. The 2.4G and/or 5G LEDs should be green or orange. If they're red, the WRE6606 is too far from the wireless router or AP - move the WRE6606 closer, but not too close as to cause interference.



Current Location

Ideal Location

- EN Remote clients can now wirelessly connect to your home wireless router or AP via the WRE6606 using the wireless router or AP's SSID/Password.

Other Modes:

For **AP** mode, set the WRE6606 switch to **A**. Connect your computer to the WRE6606 Ethernet port and enter <http://zyxelsetup> or <http://zyxelsetup.local> in your browser. Configure an SSID (Wi-Fi network name) and corresponding Wi-Fi password in eaZy 123 for the WRE6606. Now disconnect the computer from the WRE6606 Ethernet port and connect the WRE6606 to the wireless router using an Ethernet cable. Wireless clients can now connect to the Internet using the Wi-Fi network name and password you just configured in the WRE6606.

For **Client** mode, set the WRE6606 switch to **C**. Connect your computer to the WRE6606 Ethernet port and enter <http://zyxelsetup> or <http://zyxelsetup.local> in your browser. Select the SSID Wi-Fi network name and enter the Wi-Fi password of your wireless router in eaZy 123. You now can use the WRE6606 as a wireless adapter and access the Internet through the wireless router by connecting your computer to the WRE6606 Ethernet port.

Troubleshooting

Problem: I entered <http://zyxelsetup> or <http://zyxelsetup.local> in my browser, but the web configurator login page didn't open.

Possible Solutions:

- It's preferable to connect to the WRE6606 using Ethernet. If you logged in using Wi-Fi and changed the Wi-Fi settings, you must use the new settings to log in again.
- Try a different browser.
- Turn off the WRE6606, wait 10 seconds, then turn it back on.
- Try <http://192.168.1.2> instead of <http://zyxelsetup> or <http://zyxelsetup.local>. When using <http://192.168.1.2>, your computer should have an IP address in the 192.168.1.3-192.168.1.254 range.
- Reset the WRE6606 back to the factory defaults. Press the **WPS/RESET** button and hold it down for 10-15 seconds. Unplug and re-plug the WRE6606 if it does not restart automatically.

Problem: I cannot connect to the Internet via the WRE6606 in **Repeater** mode.

Possible Solutions:

- Check you have entered the same Wi-Fi network password as your wireless router in eaZy 123.
- The WRE6606 in Repeater mode may not be within the Wi-Fi signal range of your wireless router. Move the WRE6606 closer and try again. The 2.4G or 5G LEDs should be orange or green.
- Check that your wireless router doesn't have security features enabled such as MAC Filtering or a firewall. Disable MAC Filtering or the firewall on your wireless router if it does.
- If the wireless settings on your wireless router have changed, this will break the link between the WRE6606 in Repeater mode and your wireless router. Run eaZy 123 again to establish the connection with the new settings.