



## RECYCLING

At the end of its service life period this product should be disposed of according to the recycling procedures in your region.

www.evapolar.com



© EVAPOLAR LTD. All rights reserved.

# evapolar

## evalIGHT™ Personal Air Cooler

## PRODUCT GUIDE

## CONTENTS

<b>Introduction</b>	2
<b>Safety regulations</b>	2
<b>First start</b>	5
<b>Daily use</b>	7
Placing the device	7
Cleaning	8
Moving and transportation	8
Temperature parameters	11
Usage mode	12
Control panel and menu	13
Start screen	14
Control elements	14
Menu points	15
<b>Cleaning and maintenance</b>	16
Storage during long periods of no usage	19
<b>Replacing the cartridge</b>	20
<b>Troubleshooting</b>	22
<b>Technical specifications</b>	24
<b>Legal information</b>	25
<b>EEE Waste</b>	27
Batteries	28
<b>Safety instructions</b>	29

## INTRODUCTION

### Congratulations!

Congratulations! You have bought your own personal evalIGHT™ air cooler. To take full advantage of the device, please read the product guide before you start using it.

### Intended use:

The evalIGHT™ air cooler is designed to cool and humidify the personal zone around you by creating a local microclimate within an area of 2-3 m<sup>2</sup> (22 - 33 ft<sup>2</sup>). It also has a purification effect, filtering large dust particles from the air. The best effect can be achieved indoors and in well-ventilated rooms.

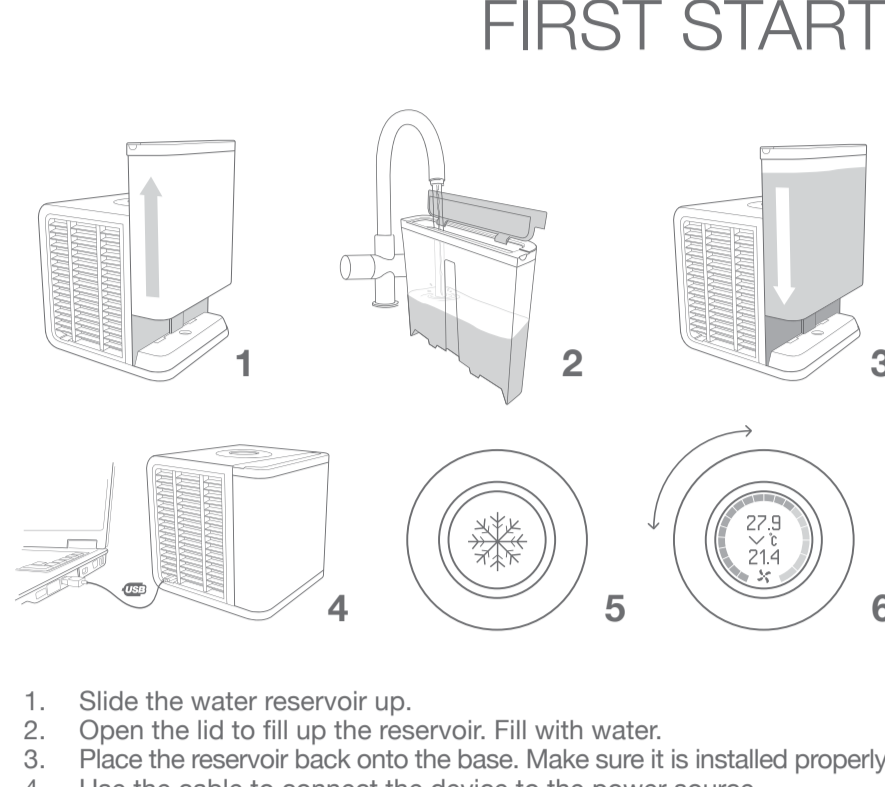
### Safety regulations:

- The device must be placed onto a smooth horizontal surface.
- Tilting it may cause a water leak and damage the device.
- Do not carry the device when it is filled with water. Even after you empty the reservoir, some water will still remain in the internal compartment.
- Please refer to the section of this manual about device transportation.
- For personal safety and proper functionality of the device use only clean, untreated tap water. If the source of water is polluted and you are not sure

- about its safety, please use distilled water. It is recommended to perform the cleaning and technical maintenance of the device according to the "Cleaning and maintenance" section of this product guide.
- The device is not intended for use in a highly polluted environment. Large dust particles, dirt, etc., can seriously affect the longevity of the device's evaporative cartridge lifecycle.
- Make sure that water does not reach the external parts of the device. Do not use it near water, in a swimming pool, bathroom, laundry room, outdoors when raining or at any other location with high humidity levels.
- In the case of a leak or if water spills onto the surface of the device, immediately disconnect the power cord and let the device dry for at least 24 hours.
- Do not place the device under direct sunlight.
- If you do not plan to use the device for a long time, empty the water reservoir and let the device run at maximum power for at least 4 hours to allow the cartridge to dry out.
- Use only the original power supply from the package.
- Do not touch the power supply or power cord with wet hands.
- Unplug the device during the following activities: cleaning, technical maintenance, removing elements and moving the device.
- To maximise the effect of the device, it should be placed on an elevated surface, e.g. a table or a cupboard.
- Do not place the device next to a heater or within proximity of any electrical equipment.
- Do not place the device in passageways or any other location from where it can be accidentally knocked over.
- Do not let any foreign objects enter the device.
- Do not place heavy items on top of the device.
- Do not block the front and back grills of the device.
- Do not turn the device upside down; this will disrupt its functionality.

- Do not submerge the device in water or in any other liquid; see cleaning guide below.
- Do not place open fire sources (candles, etc.) on top of the device.
- People with limited physical, visual or mental abilities or lacking proper experience and/or knowledge should never use the device without the supervision of those responsible for their safety or those capable of assistance in using the device.
- The device can be switched off completely only when it is disconnected from the power supply.
- The manufacturer does not bear any responsibility for any damage arising from failure to comply with this product guide.
- A replaceable evaporative cartridge is designed specifically for this product. To maximize the effect of the device the cartridge should be changed every 3-6 months depending on air and water conditions. If your cartridge has been broken or damaged, you can purchase a replacement at [evapolar.com](http://evapolar.com) or with your local retailer.

## FIRST START



- Slide the water reservoir up.
- Open the lid to fill the reservoir. Fill with water.
- Place the reservoir back onto the base. Make sure it is installed properly.
- Use the cable to connect the device to the power source.
- The device will switch on.
- Push the circular button on the top of the device to adjust the air flow and other features.

The temperature of the outgoing air will start to decrease in a few minutes. You can vary the airflow using the rotation wheel on the upper part of the device. Enjoy your personal microclimate!

*Important: During the first use you may notice a technical smell. This is normal and vanishes completely after several hours of use.*

*During the first cartridge filling there will be quick water saturation on the evaporative pads. This is normal and will enable your device to work properly.*

- Do not place open fire sources (candles, etc.) on top of the device.
- Do not touch the power supply or power cord with wet hands.
- The manufacturer does not bear any responsibility for any damage arising from failure to comply with this product guide.
- A replaceable evaporative cartridge is designed specifically for this product. To maximize the effect of the device the cartridge should be changed every 3-6 months depending on air and water conditions. If your cartridge has been broken or damaged, you can purchase a replacement at [evapolar.com](http://evapolar.com) or with your local retailer.

## DAILY USE

- Do not place open fire sources (candles, etc.) on top of the device.
- Do not touch the power supply or power cord with wet hands.
- The manufacturer does not bear any responsibility for any damage arising from failure to comply with this product guide.
- A replaceable evaporative cartridge is designed specifically for this product. To maximize the effect of the device the cartridge should be changed every 3-6 months depending on air and water conditions. If your cartridge has been broken or damaged, you can purchase a replacement at [evapolar.com](http://evapolar.com) or with your local retailer.

To keep the device from causing any obstructions, place it slightly to one side of your position. In this way, you will always have room for your laptop, book or anything else needed for your activities.

### Filling the reservoir

The device only needs water to work properly. You should remove the reservoir from the left side of the device, fill it with water and then place it back. The water will start flowing automatically.

*Important: Even if there is no water in the internal reservoir, the evaporative cartridge could still be wet. Do not transport the device long distances with a wet cartridge; please see section "Storage during long periods of no usage".*

*For shorter distances, make sure that the device with a wet cartridge is not isolated in a box or bag with no air flow.*

- The temperature of the outgoing air will start to decrease in a few minutes. You can vary the airflow using the rotation wheel on the upper part of the device. Enjoy your personal microclimate!
- Important: During the first use you may notice a technical smell. This is normal and vanishes completely after several hours of use.*
- During the first cartridge filling there will be quick water saturation on the evaporative pads. This is normal and will enable your device to work properly.*

We have made sure that setting up your air cooler is quick and easy. evalIGHT™ is ready-to-use right after you unpack it. Following a few simple recommendations can help to ensure that your experience as smooth as possible. The air cooler creates a personal comfort zone. To be in the centre of that zone, place the device within one metre (3 ft) of your position with its front grill facing you.

The transport reservoir lets you assess the water level instantly. It is worth mentioning that the evaporative cartridge will absorb up to 400 ml of water, which means that once the reservoir is empty, the device will continue cooling for another few hours. The default mode will have the device notify you by illuminating the reservoir in white when the water runs out. You can turn off these notifications; please see section "Storage during long periods of no usage".

The humidity level in the room is over 70%. The device will continue working as a regular ventilator. You can use the replaceable reservoir whilst the device is working as it will not affect its operation.

### Moving and transportation

Before any kind of transportation, the device should be disconnected from the power source. In addition to the water in the transparent reservoir, the device also stores some water in the internal tank so that the evaporative

- cartridge can absorb it. Before transportation, it is highly recommended to empty the reservoir and set the device to run on the maximum fan speed for the device to dry the water out from the internal reservoir.
- Transportation without drying the water out the internal reservoir is not attempted at your own risk. Water leakage during the transportation is not covered by the warranty. In order to avoid leakage, the device should be positioned horizontally and moved slowly.
- In order to remove the water instantly from the internal reservoir and prepare device for transportation, please complete the following:

- Disconnect the device from the power source.
- Move the device to one side of the power source.
- Use both hands to lift the upper part of the body. Push on both sides of the base to release the locks and then slide it upwards.

- Tilt the device to the right whilst holding the cartridge and drain the water carefully.
- Put the upper lid of the body back so that it fits into the slots.
- Put the reservoir back in place.
- The device is ready for transportation.

evalIGHT™ Evaporol Air Coolers work by using natural evaporative cooling so its power level can change in various climates. The charts below summarize the cool flow power approximately in different aerial conditions in both Centigrade and Fahrenheit.

Indoor humidity	Room temperature			
	75° F	85° F	95° F	105° F
30%	59,3° F	56,6° F	72,1° F	78,9° F
40%	62,0° F	60,0° F	75,5° F	82,4° F
50%	64,5° F	71,6° F	79,1° F	86,7° F
60%	67,1° F	75,0° F	82,0° F	90,8° F
70%	69,6° F	77,9° F	86,0° F	94,2° F

Temperature of outgoing air, °F

Indoor humidity	Room temperature			
	25° C	30° C	35° C	40° C
30%	15,2° C	18,7° C	22,3° C	28,1° C
40%	16,7° C	20,6° C	24,2° C	28,0° C
50%	18,1° C	22,0° C	26,2° C	30,4° C
60%	19,5° C	23,9° C	28,2° C	32,7° C
70%	20,9° C	25,5° C	30,0° C	34,6° C

Temperature of outgoing air, °C

- Important:** Even if there is no water in the internal reservoir, the evaporative cartridge could still be wet. Do not transport the device long distances with a wet cartridge; please see section "Storage during long periods of no usage". For shorter distances, make sure that the device with a wet cartridge is not isolated in a box or bag with no air flow.

*Important: Due to outside conditions varying 5v, Evapolar is not responsible for the way that the device functions outdoors.*

### Tuning

You can alter the colour and brightness level of the lighting, temperature measurement units and water level indications. All of the above is done through the Menu; see paragraph on Control Panel and Menu.

### Device Maintenance

Depending on how often you use Device Maintenance, its internal camera needs cleaning; see paragraph on Device Maintenance.

*Important:*

- Do not use the device in places exceeding 60° C (140° F). Failing to do so can damage both the body and internal components of the device.
- Take care when using aromatic oils or incenses. The device evaporates water intensively so even a small amount of odorous substances can concentrate in an area around you which is potentially dangerous to your health.
- To avoid water spillage, do not move the device whilst it is filled with water; see paragraph on Transportation.
- Fill the reservoir with clean water into the reservoir that is still attached to the device; do not spill water onto the body of the device.

## CONTROL PANEL & MENU



The device will continue working as a regular ventilator. You can use the replaceable reservoir whilst the device is working as it will not affect its operation.

The device will continue working as a regular ventilator. You can use the replaceable reservoir whilst the device is working as it will not affect its operation.

### Menu points

At night mode the device lighting turns off and the display dims. To exit the night mode, simply press the display lightly.

You can choose your preferred lighting colour from the water reservoir.

You can choose your preferred brightness level from the water reservoir or you may also turn off this feature.

The device will continue working as a regular ventilator. You can use the replaceable reservoir whilst the device is working as it will not affect its operation.

The device will continue working as a regular ventilator. You can use the replaceable reservoir whilst the device is working as it will not affect its operation.

The device will continue working as a regular ventilator. You can use the replaceable reservoir whilst the device is working as it will not affect its operation.

The device will continue working as a regular ventilator. You can use the replaceable reservoir whilst the device is working as it will not affect its operation.

The device will continue working as a regular ventilator. You can use the replaceable reservoir whilst the device is working as it will not affect its operation.

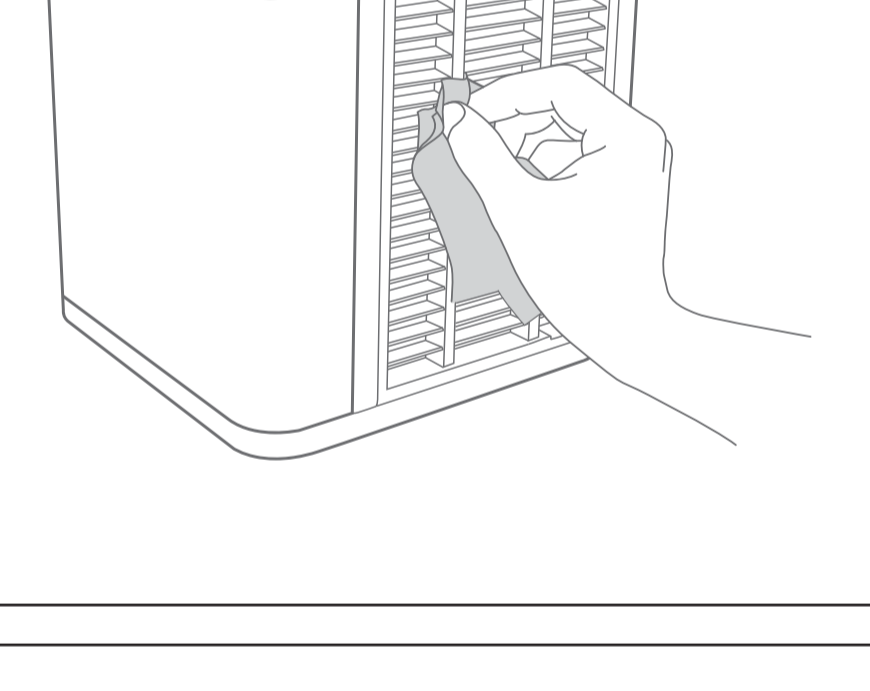
The device will continue working as a regular ventilator. You can use the replaceable reservoir whilst the device is working as it will not affect its operation.

The device will continue working as a regular ventilator. You can use the replaceable reservoir whilst the device is working as it will not affect its operation.

The device will continue working as a regular ventilator. You can use the replaceable reservoir whilst the device is working as it will not affect its operation.

The device will continue working as a regular ventilator. You can use the replaceable reservoir whilst the device is working as it will not affect its operation.

## CLEANING AND MAINTENANCE



The device will continue working as a regular ventilator. You can use the replaceable reservoir whilst the device is working as it will not affect its operation.

The device will continue working as a regular ventilator. You can use the replaceable reservoir whilst the device is working as it will not affect its operation.

The device will continue working as a regular ventilator. You can use the replaceable reservoir whilst the device is working as it will not affect its operation.

The device will continue working as a regular ventilator. You can use the replaceable reservoir whilst the device is working as it will not affect its operation.

The device will continue working as a regular ventilator. You can use the replaceable reservoir whilst the device is working as it will not affect its operation.

The device will continue working as a regular ventilator. You can use the replaceable reservoir whilst the device is working as it will not affect its operation.

The device will continue working as a regular ventilator. You can use the replaceable reservoir whilst the device is working as it will not affect its operation.

The device will continue working as a regular ventilator. You can use the replaceable reservoir whilst the device is working as it will not affect its operation.

The device will continue working as a regular ventilator. You can use the replaceable reservoir whilst the device is working as it will not affect its operation.

The device will continue working as a regular ventilator. You can use the replaceable reservoir whilst the device is working as it will not affect its operation.

The device will continue working as a regular ventilator. You can use the replaceable reservoir whilst the device is working as it will not affect its operation.

The device will continue working as a regular ventilator. You can use the replaceable reservoir whilst the device is working as it will not affect its operation.

The device will continue working as a regular ventilator. You can use the replaceable reservoir whilst the device is working as it will not affect its operation.

The device will continue working as a regular ventilator. You can use the replaceable reservoir whilst the device is working as it will not affect its operation.

The device will continue working as a regular ventilator. You can use the replaceable reservoir whilst the device is working as it will not affect its operation.

The device will continue working as a regular ventilator. You can use the replaceable reservoir whilst the device is working as it will not affect its operation.

The device will continue working as a regular ventilator. You can use the replaceable reservoir whilst the device is working as it will not affect its operation.

The device will continue working as a regular ventilator. You can use the replaceable reservoir whilst the device is working as it will not affect its operation.

The device will continue working as a regular ventilator. You can use the replaceable reservoir whilst the device is working as it will not affect its operation.

The device will continue working as a regular ventilator. You can use the replaceable reservoir whilst the device is working as it will not affect its operation.

The device will continue working as a regular ventilator. You can use the replaceable reservoir whilst the device is working as it will not affect its operation.

The device will continue working as a regular ventilator. You can use the replaceable reservoir whilst the device is working as it will not affect its operation.

The device will continue working as a regular ventilator. You can use the replaceable reservoir whilst the device is working as it will not affect its operation.

The device will continue working as a regular ventilator. You can use the replaceable reservoir whilst the device is working as it will not affect its operation.

The device will continue working as a regular ventilator. You can use the replaceable reservoir whilst the device is working as it will not affect its operation.

The device will continue working as a regular ventilator. You can use the replaceable reservoir whilst the device is working as it will not affect its operation.

The device will continue working as a regular ventilator. You can use the replaceable reservoir whilst the device is working as it will not affect its operation.

The device will continue working as a regular ventilator. You can use the replaceable reservoir whilst the device is working as it will not affect its operation.

The device will continue working as a regular ventilator. You can use the replaceable reservoir whilst the device is working as it will not affect its operation.

The device will continue working as a regular ventilator. You can use the replaceable reservoir whilst the device is working as it will not affect its operation.

The device will continue working as a regular ventilator. You can use the replaceable reservoir whilst the device is working as it will not affect its operation.

The device will continue working as a regular ventilator. You can use the replaceable reservoir whilst the device is working as it will not affect its operation.

The device will continue working as a regular ventilator. You can use the replaceable reservoir whilst the device is working as it will not affect its operation.

The device will continue working as a regular ventilator. You can use the replaceable reservoir whilst the device is working as it will not affect its operation.

The device will continue working as a regular ventilator. You can use the replaceable reservoir whilst the device is working as it will not affect its operation.

The device will continue working as a regular ventilator. You can use the replaceable reservoir whilst the device is working as it will not affect its operation.

The device will continue working as a regular ventilator. You can use the replaceable reservoir whilst the device is working as it will not affect its operation.

The device will continue working as a regular ventilator. You can use the replaceable reservoir whilst the device is working as it will not affect its operation.

The device will continue working as a regular ventilator. You can use the replaceable reservoir whilst the device is working as it will not affect its operation.

The device will continue working as a regular ventilator. You can use the replaceable reservoir whilst the device is working as it will not affect its operation.

The device will continue working as a regular ventilator. You can use the replaceable reservoir whilst the device is working as it will not affect its operation.

The device will continue working as a regular ventilator. You can use the replaceable reservoir whilst the device is working as it will not affect its operation.

The device will continue working as a regular ventilator. You can use the replaceable reservoir whilst the device is working as it will not affect its operation.

The device will continue working as a regular ventilator. You can use the replaceable reservoir whilst the device is working as it will not affect its operation.

The device will continue working as a regular ventilator. You can use the replaceable reservoir whilst the device is working as it will not affect its operation.

The device will continue working as a regular ventilator. You can use the replaceable reservoir whilst the device is working as it will not affect its operation.

The device will continue working as a regular ventilator. You can use the replaceable reservoir whilst the device is working as it will not affect its operation.

The device will continue working as a regular ventilator. You can use the replaceable reservoir whilst the device is working as it will not affect its operation.