



Quick Installation Guide

Applicable Models
AS4002T/AS4004T

Ver.3.0.01017 (2017-10-17)

Table of Contents

Notices.....	3
Safety Precautions.....	4
1. Package Contents	5
2. Optional Accessories	7
3. Hardware Installation Guide	8
Tools Needed for Hard Disk Installation	8
Hard Disk Installation.....	8
Securing the Power Cord.....	10
Connecting and Powering on the NAS	10
4. Software Installation Guide.....	12
CD Installation	12
Web Installation	15
Installation Using a Mobile Device	16
Installation Using a Direct Connection	18
Shutting Down Your NAS	18
5. Appendix.....	19
LED Indicators	19
Rear Panel.....	20
Troubleshooting.....	20

Notices



Federal Communications Commission Statement

This device complies with FCC Rules Part 15. Operation is subject to the following two conditions:

- ➔ This device may not cause harmful interference.
- ➔ This device must accept any interference received, including interference that may cause undesired operation.

This equipment has been tested and found to comply with the limits for a class A digital device, pursuant to Part 15 of the Federal Communications Commission (FCC) rules. These limits are designed to provide reasonable protection against harmful interference in a residential installation. This equipment generates, uses, and can radiate radio frequency energy and, if not installed and used in accordance with the instructions, may cause harmful interference to radio communications. However, there is no guarantee that interference will not occur in a particular installation. If this equipment does cause harmful interference to radio or television reception, which can be determined by turning the equipment off and on, the user is encouraged to try to correct the interference by one or more of the following measures:

- ➔ Reorient or relocate the receiving antenna.
- ➔ Increase the separation between the equipment and receiver.
- ➔ Connect the equipment into an outlet on a circuit different from that to which the receiver is connected.
- ➔ Consult the dealer or an experienced radio/TV technician for help.

Changes or modifications not expressly approved by the party responsible for compliance could void the user's authority to operate the equipment.

CE Mark Warning



CE marking for devices without wireless LAN/Bluetooth

The shipped version of this device complies with the requirements of the EEC directives 2004/108/EC "Electromagnetic compatibility" and IEC60950-1:2005 (2nd Edition)+A1:2009 "Information technology equipment-Safety".

Safety Precautions

The following safety precautions will increase the life of the NAS. Follow all precautions and instructions.

Electrical Safety

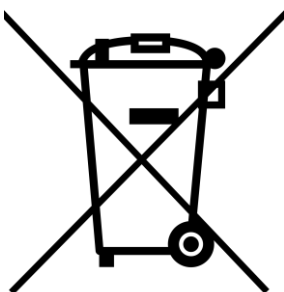
Unplug this product from the power source before cleaning.

Use only the bundled power adapter. Using other power adapters may damage your device.

Ensure that you plug the power adapter to the correct power input rating. Check the label on the power adapter for the power rating.

Operation Safety

- ➔ DO NOT place this product in a location where it may get wet.
- ➔ Place this product on a flat and stable surface.
- ➔ Use this product in environments with an ambient temperature between 5°C and 35°C.
- ➔ DO NOT block the air vents on the case of this product. Always provide proper ventilation for this product.
- ➔ DO NOT insert any object or spill liquid into the air vents. If you encounter technical problems with this product, contact a qualified service technician or your retailer. DO NOT attempt to repair this product yourself.









DO NOT throw this product in municipal waste.




This product has been designed to enable proper reuse of parts and recycling. This symbol of the crossed out wheeled bin indicates that the product (electrical and electronic equipment) should not be placed in municipal waste. Check local regulations for disposal of electronic products.



1. Package Contents

Applicable Models: AS4002T, AS4004T

Model Name	 AS4002T	 AS4004T
 Power Cord	x1	x1
 Adapter	x1	x1
 RJ45 Network Cable	x2	x2
 10 Gigabit Network Cable	x1	x1

 <p>Screws for use with 2.5" HDD</p>	<p>x8</p>	<p>x16</p>
 <p>Installation CD</p>	<p>x1</p>	<p>x1</p>
 <p>Quick Start Guide</p>	<p>x1</p>	<p>x1</p>

2. Optional Accessories

The items below may be purchased from the ASUSTOR Accessories Store <http://shop.asustor.com>.

3. Hardware Installation Guide

All data stored on the hard disk(s) will be erased and CANNOT be recovered. Please back up all important data before initializing the system.

Tools Needed for Hard Disk Installation

- Phillips head screwdriver
- At least one 2.5 or 3.5 inch SATA hard disk. (For a list of compatible hard disks, please see <http://www.asustor.com/service/hd?id=hd>)

Hard Disk Installation

1. Remove the front panel as shown in the image below.

AS4002T



AS4004T



2. Using the latch, gently pull the disk tray out of the disk bay.

AS4002T



AS4004T



3. Mount the hard disk to the disk tray.

✓ **To install a 3½" hard drive**, please remove the two rails on both sides of the hard drive tray. Place the hard drive into the tray, align and insert the rails to secure the hard drive and insert it into the NAS.

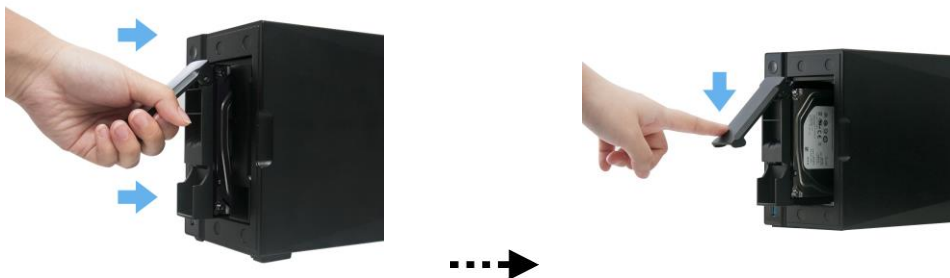


- ✓ **To install a 2½" hard drive**, please remove the two rails on both sides of the hard drive tray. Align the hard drive with the 4 holes labeled 2.5" with the SATA connector facing outward. While maintaining a grip on the hard drive and tray, turn the tray upside down and secure the drive with four included M3 screws as demonstrated below.

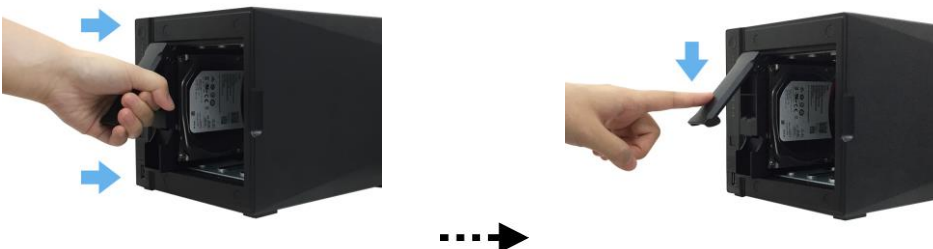


4. Slide the disk tray onto the rails of the disk bay. Using the latch, gently push the disk tray all the way into the disk bay. Secure the disk tray in place by pushing down on the latch. The latch should close easily and snap in with an audible 'click'. Please make sure that the disk tray is pushed all the way into the disk bay before attempting to secure the latch.

AS4002T



AS4004T



5. Return the front panel.

AS4002T



AS4004T



Securing the Power Cord

Note: You can use the provided cord bracket to secure the power cord in place, if you are concerned about the NAS power cord becoming detached when the NAS is moved.

Attach the bracket to the power cord as shown in the graphic below.

AS4002T

AS4004T



Connecting and Powering on the NAS

1. Connect the NAS to its power supply.

AS4002T

AS4004T



2. Connect the NAS to your router, switch or hub using an Ethernet cable.
3. Press and hold down the power button for 1 – 2 seconds until the blue power LED indicator is lit. This indicates that the NAS is now powered on. While the NAS is being powered on, the green system status LED indicator will flash and the blue network LED indicator will be lit as well.

AS4002T**AS4004T**

4. The NAS is ready for operation once the green system status LED indicator has stopped flashing and remains steadily lit. At this time, you should also hear a 'beep' from the system buzzer. Hardware installation is now complete. Please move on to the software installation guide to configure your system settings.

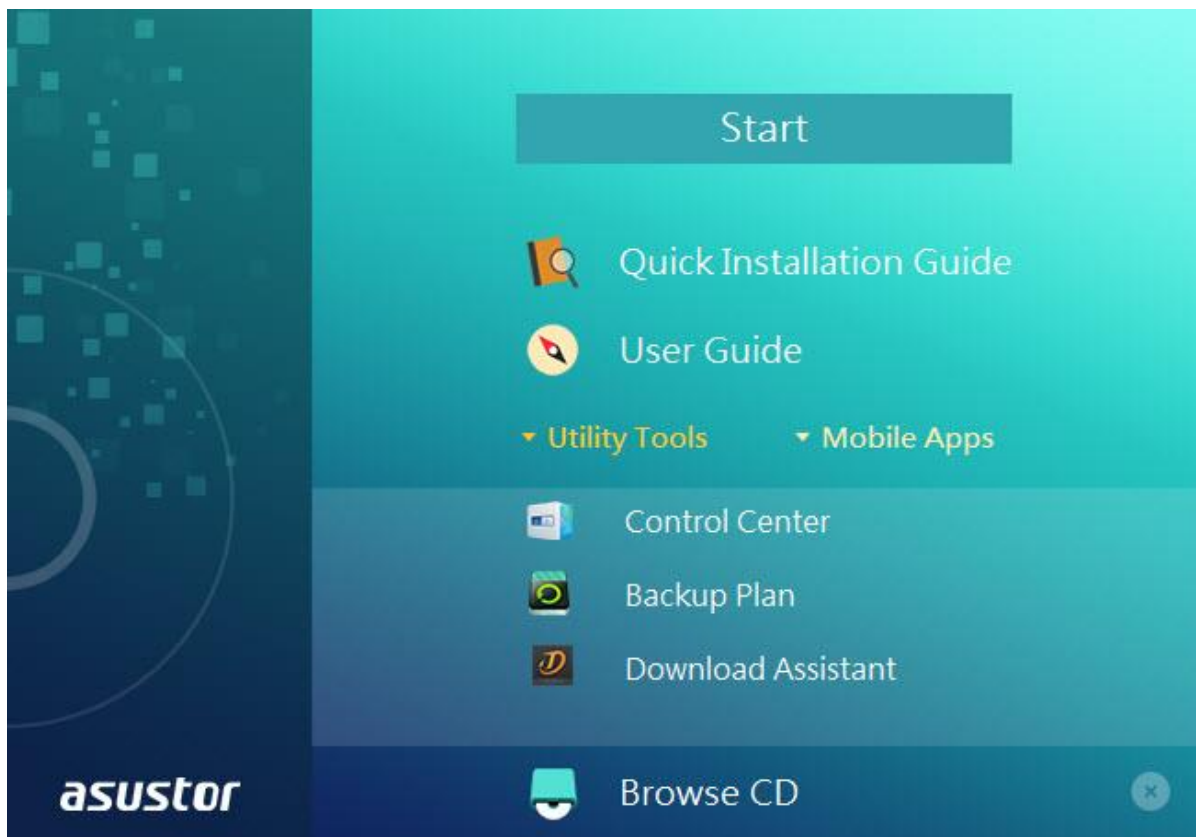
4. Software Installation Guide

There are 4 different installation methods that you can choose from. Please select the method most suitable for you. If you do not have a CD drive, you can go to the download section of the ASUSTOR website (<http://www.asustor.com/service/downloads>) to download the latest software.

CD Installation

Windows Users

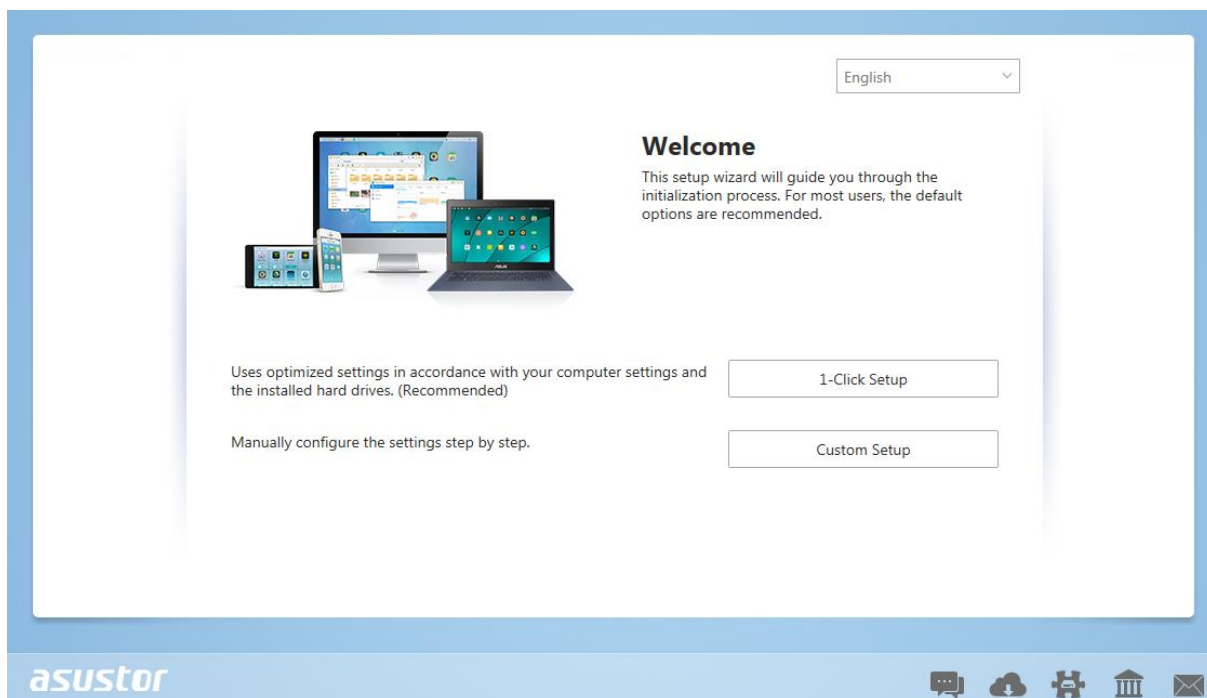
1. Insert the installation CD into your computer's CD drive and then select "Start" from the autorun CD-menu.



2. The installation wizard will install ASUSTOR Control Center onto your computer. After ASUSTOR Control Center has been installed, it will automatically begin to scan your network for ASUSTOR NAS devices.

Control Center							
asustor							
English							
Scan Open Connect ADM Update Service Action							
Name	IP	Model	Serial Number	MAC Address	ADM Version	Status	WOL
AS7010T-0001	172.16.1.44	AS7010T	AS13037010TM0002	20:14:07:01:00:01	2.4.0.RFU6	Ready	Enable
AAAAAA	172.16.2.157	AS7004T	AS14107004TM0431	10:bf:48:8a:89:f8	2.4.1.BI81	Ready	Enable
AS7004T-mktdemo	172.16.2.120	AS7004T		20:14:09:12:00:03	2.4.0.BHQ1	Ready	Enable
AS7004T-K	172.16.2.240	AS7004T		20:14:09:11:00:03	2.4.0.RFU6	Ready	Enable
AS7008T-0001	172.16.2.79	AS7008T		20:14:07:04:00:01	2.5.0.A5T1	Ready	Enable
AS7004T-0009	172.16.12.0	AS7004T		20:14:09:12:00:09	2.4.0.RFU6	Ready	Enable
AS7008T-0009	172.16.1.88	AS7008T	AS15047009TM0000	20:14:07:01:00:09	2.4.1.BI91	Ready	Enable
AS7010T-000D	172.16.1.172	AS7010T	AA14087008ZZ8888	20:14:07:02:00:0d	2.5.0.A681	Ready	Enable
AS7004T-0007	172.16.8.47	AS7004T	ES00000000000009	20:14:09:12:00:07	2.4.1.BI81	Ready	Enable
AS7004T-0007	172.16.8.30	AS7004T	AS1234567TM1000	20:14:09:11:00:07	2.4.1.BI81	Ready	Enable
AS7010T-NVR	172.16.12.144	AS7010T	AS14087010TM0221	10:bf:48:8a:6f:70	2.4.0.RFU6	Ready	Enable
bnAS7012R-7608	172.16.2.5	AS7012R	AS14097012RM0053	10:bf:48:8a:76:08	2.4.1.BIA1	Ready	Enable
7008-TV	172.16.2.142	AS7008T	AS14087010TM0044	10:bf:48:8a:6e:e5	2.4.1.BI81	Ready	Enable

- Select your NAS from the list and follow the installation wizard's instructions to complete the configuration process.



Mac Users

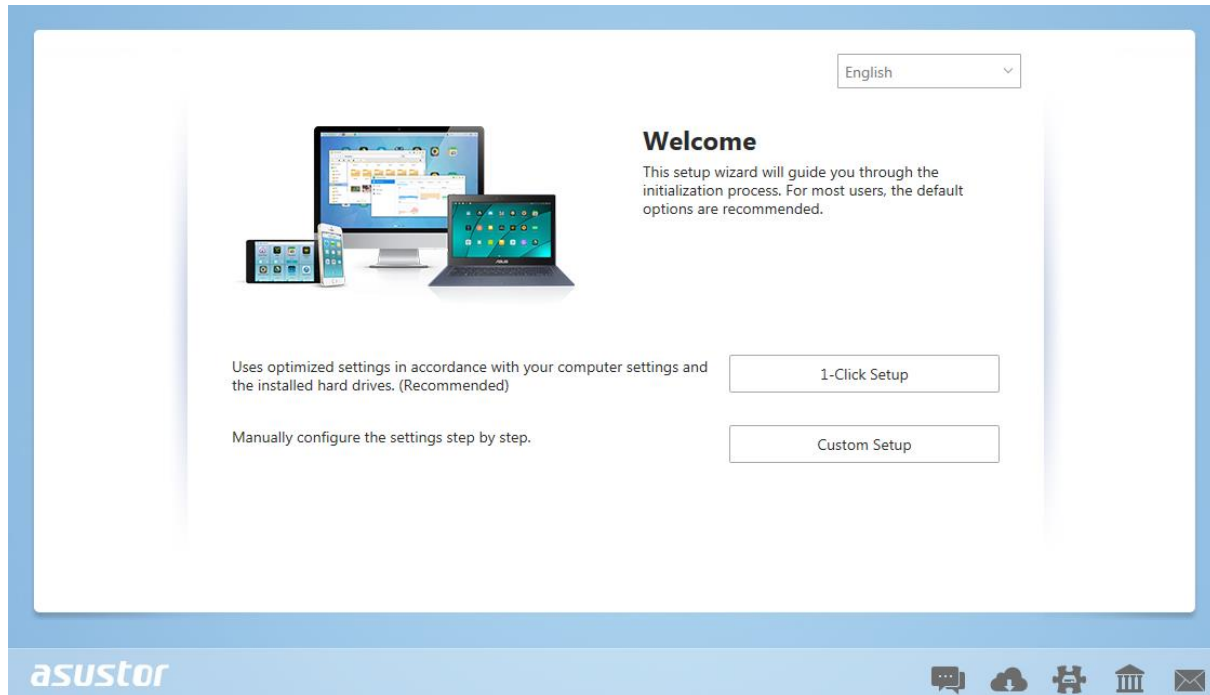
1. Insert the installation CD into your computer's CD drive and then select "Quick Install" from the autorun CD-menu.



2. The installation wizard will install ASUSTOR Control Center onto your computer. At this time you can also choose whether or not you want to install Download Assistant. After ASUSTOR Control Center has been installed, it will automatically begin to scan your network for ASUSTOR NAS devices.

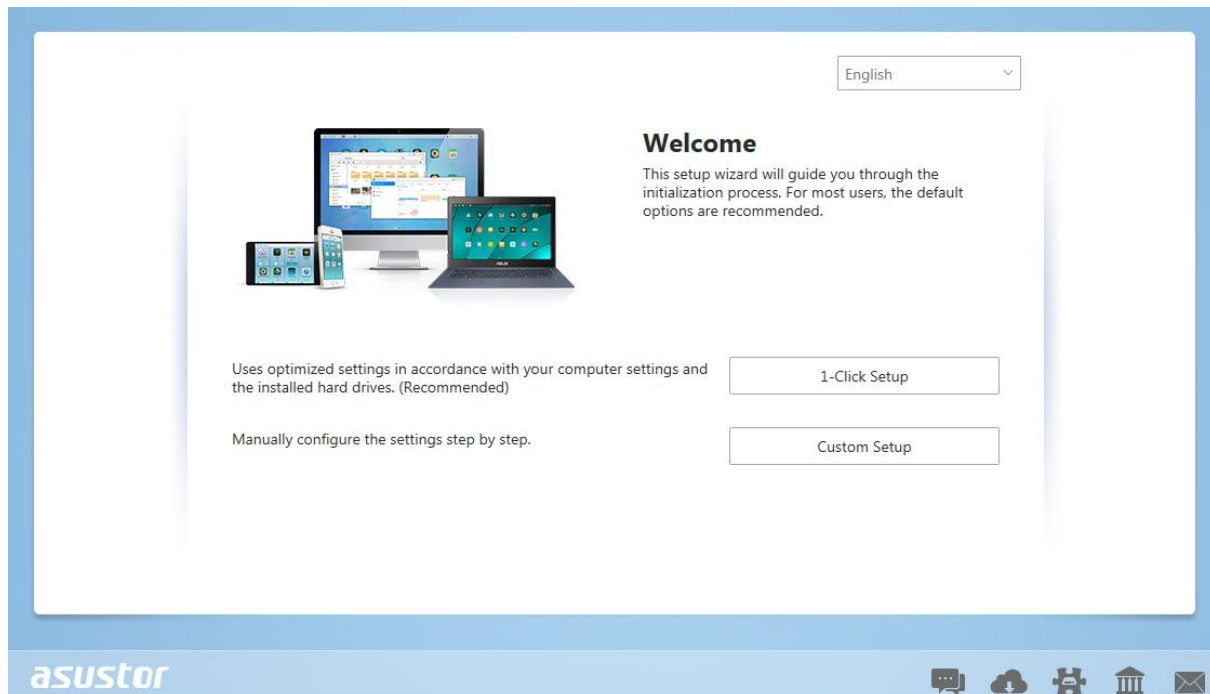
Control Center							
Name	IP Address	Model	Serial Number	MAC address	ADM Version	Status	WOL
GoblinNas	172.16.6.21	AS-604T	AT1403608MB0182	10:BF:48:8A:59:C0	3.0.0.B972	Ready	--
AS5110T-5129	172.16.2.92	AS5110T	AS25015110TM0000	20:14:12:10:51:29	3.0.0.B971	Ready	--
AS6102T-EC3D	172.16.1.84	AS6102T	AS15076104TM0019	10:BF:48:8A:EC:3D	3.0.0.B971	Ready	--
brAS7008T-7FC9	172.16.2.116	AS7008T	AS14107010TM0189	10:BF:48:8A:7F:C9	3.0.0.B971	Ready	--
AS-302T-6726	172.16.1.185	AS-302T	AT1301302MB0899	10:BF:48:8A:0D:E0	3.1.0.A951	Ready	--
Raymond-AS-604T-C...	172.16.1.147	AS-604T	AT1207608MB0103	10:BF:48:89:C5:1A	3.1.0.A8S1	Ready	--
AS-604T-C42D	172.16.1.109	AS-604T	AT1207608MB0047	10:BF:48:89:C4:2D	3.1.0.A8U2	Ready	--
NvrTest-AS6202T-1E99	172.16.2.221	AS6202T	AS15106204TM0143	10:BF:48:8B:1E:99	3.0.0.R8N2	Ready	--
AS3104T-8781	172.16.1.222	AS3202T	AS15093104TM0215	10:BF:48:8B:12:FA	3.0.0.R8N2	Ready	--
AS-602T-2DC5	172.16.2.159	AS-602T	AT1207602MB004A	10:BF:48:8A:2D:C5	3.0.0.B6L3	Ready	--

3. Select your NAS from the list and follow the installation wizard's instructions to complete the configuration process.



Web Installation

1. If you already know your NAS's current IP address, you can open up a web browser and enter in your NAS's IP address (for example: <http://192.168.1.168:8000>) to begin initialization.
2. Please follow the instructions from the installation wizard to complete the configuration process.



Installation Using a Mobile Device

1. Search for “**AiMaster**” in Google Play or the Apple App Store. You can also scan the QR codes provided below. Download and install the AiMaster mobile app to your mobile device.

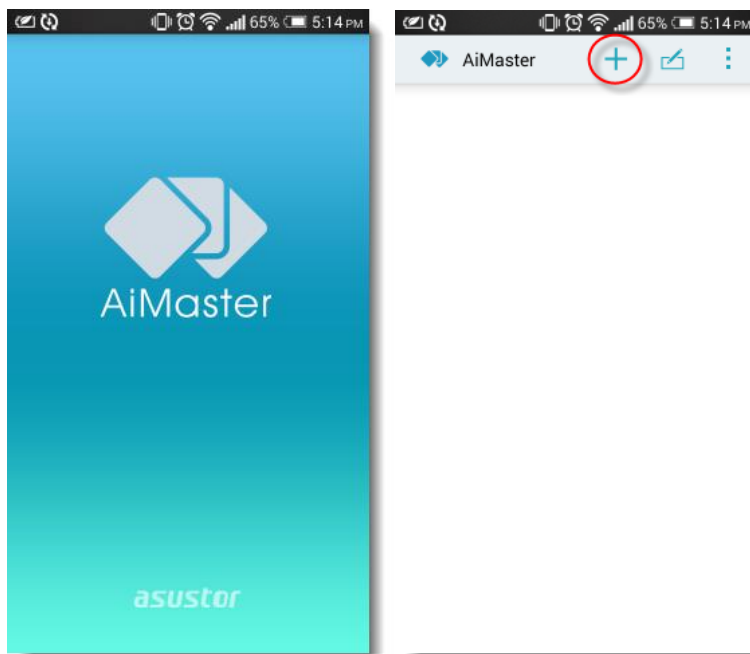
AiMaster for Android



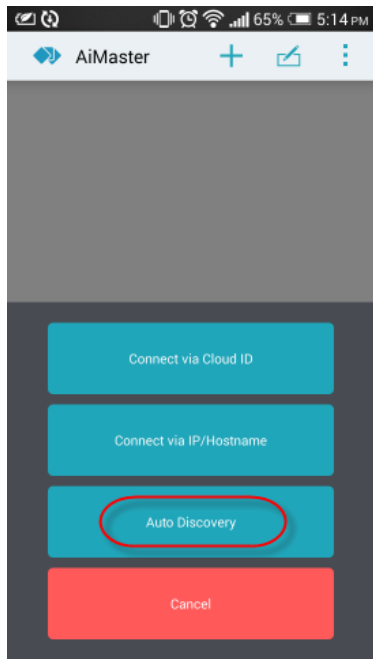
AiMaster for iOS



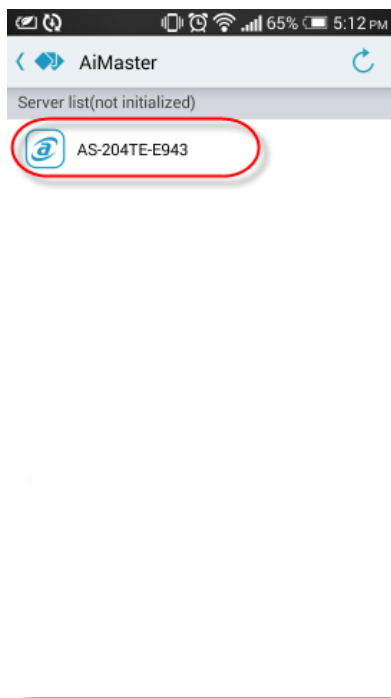
2. Make sure that your mobile device is connected to the same local network that your NAS is connected to.
3. Next, open AiMaster and then select the [+] icon from the toolbar at the top of the screen.



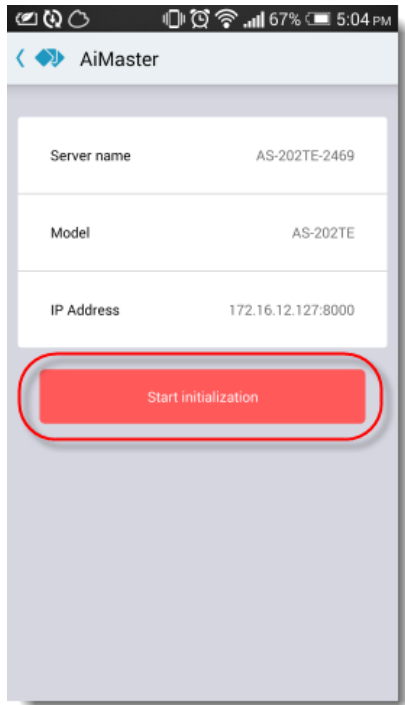
4. Select [**Auto Discovery**]. AiMaster will now scan the local network for your NAS.



5. Select your NAS from the list that appears.



6. Select **[Start Initialization]** to begin installation. Follow the prompts and instructions to complete the configuration process.



Installation Using a Direct Connection

Please see section [Troubleshooting](#) for installation instructions.

Shutting Down Your NAS

Hold down the power button for 1.5 seconds. You should be able to hear a “beep” from the system buzzer. Let go of the power button and the NAS will either shut down or enter sleep mode depending on your configuration.

AS4002T

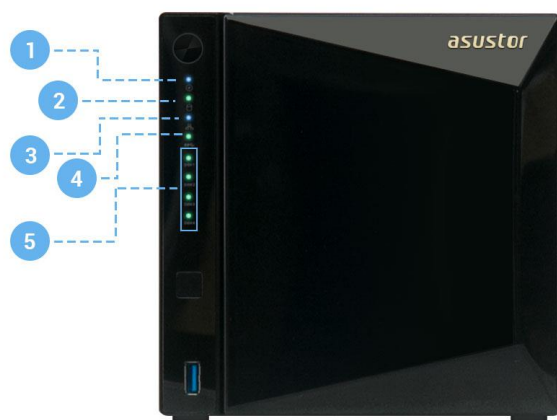


AS4004T



5. Appendix

LED Indicators

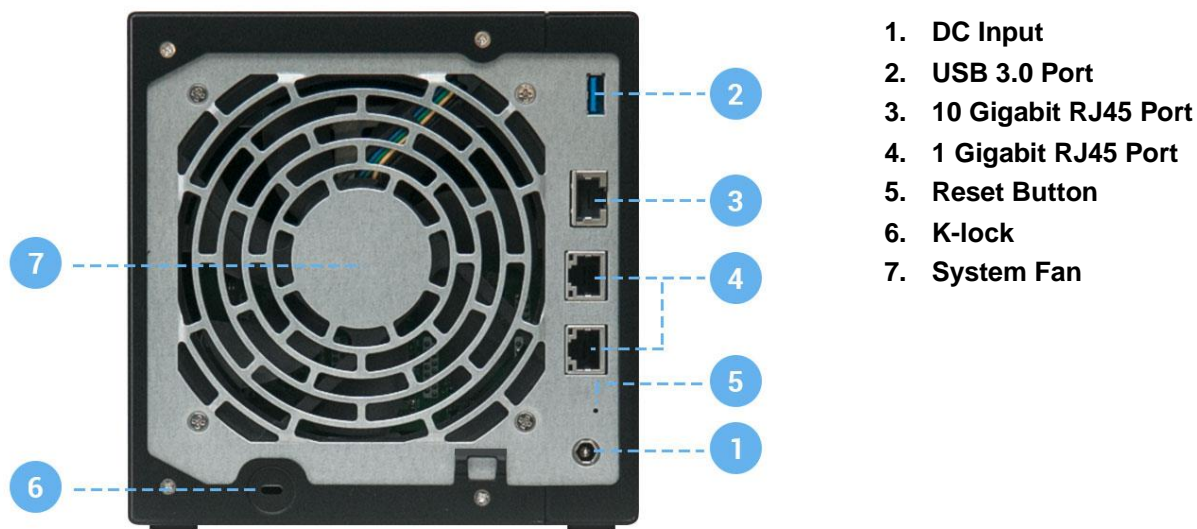


AS4002T/AS4004T

1. Power LED Indicator
2. System Status LED Indicator
3. Network LED Indicator *
4. USB LED Indicator
5. Hard Disk LED Indicator

LED Indicator	Color	Description	State
Power	Blue	Steadily lit	Power on
	Orange	Flashes every 10 seconds	LED night mode
System Status	Green	Flashing	Powering on
		Steadily lit	System ready
Network	Blue	Steadily lit	1 Gigabit Network port connected
	Purple	Steadily lit	10 Gigabit Network port connected
USB	Green	Steadily lit	The USB device connected to the front of the NAS is ready for use
		Flashing	Data access in progress
Hard Disk	Green	Steadily lit	Hard disk ready
		Flashing	Data access in progress
	Red	Steadily lit	Hard disk abnormality

Rear Panel

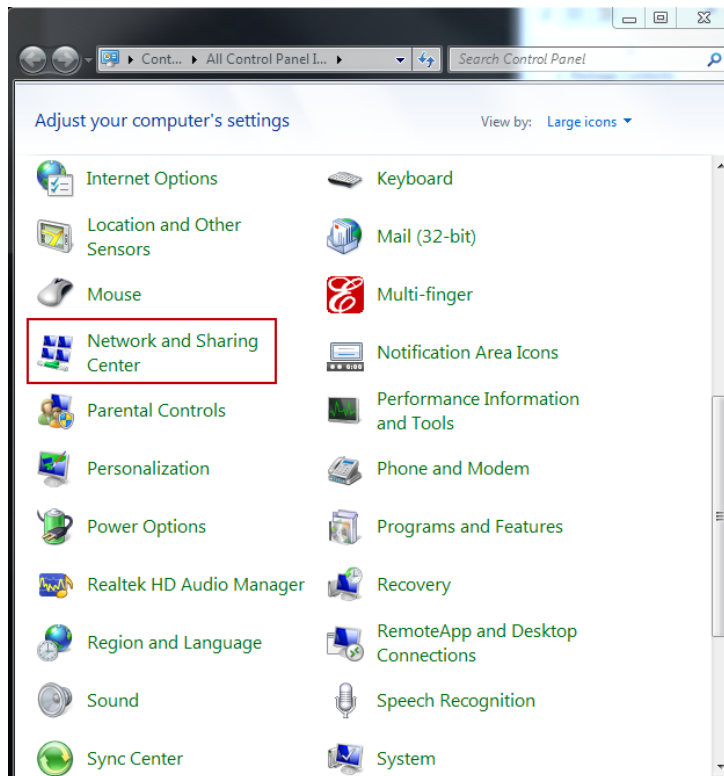


Troubleshooting

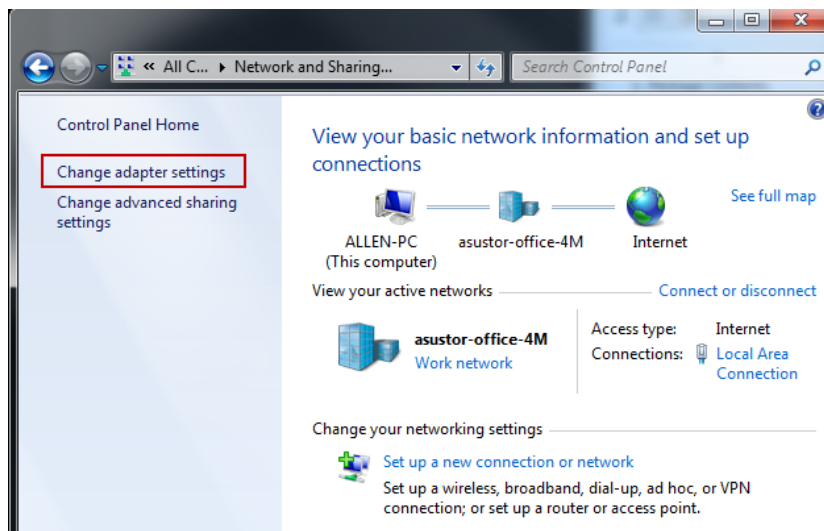
Q: Why can't I detect my ASUSTOR NAS using ASUSTOR Control Center?

A: If you are having trouble detecting your NAS using ASUSTOR Control Center, please do the following:

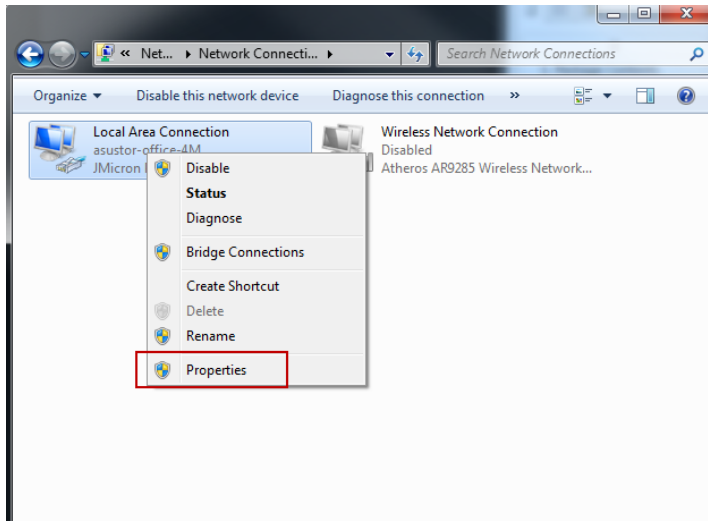
1. Please check your network connection:
 - ✓ Make sure that your computer and your NAS are part of the same local area network.
 - ✓ Check to see if the network LED indicator is lit. If you find that it is not lit, try connecting your Ethernet cable to the other network port or try using a different Ethernet cable.
 2. Please first disable any firewalls that may be running on your computer. Then try scanning for your NAS again using ASUSTOR Control Center.
 3. If you still cannot detect your NAS, please connect your NAS to your computer using the provided RJ-45 network cable and change your computer's IP settings.
- ✓ Select [Start] ➔ [Control Panel] ➔ [Network and Sharing Center]



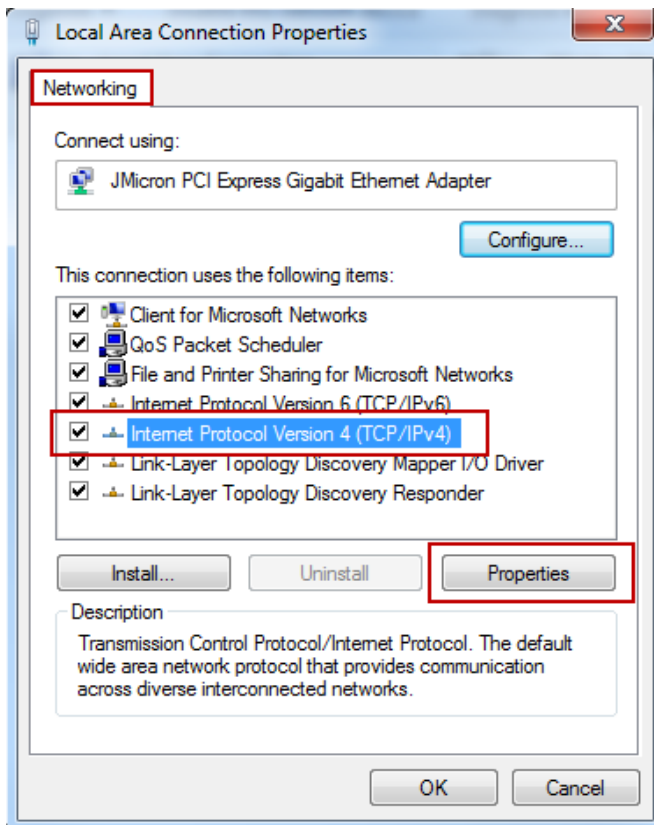
✓ Click on **[Change adapter settings]** in the left hand panel.



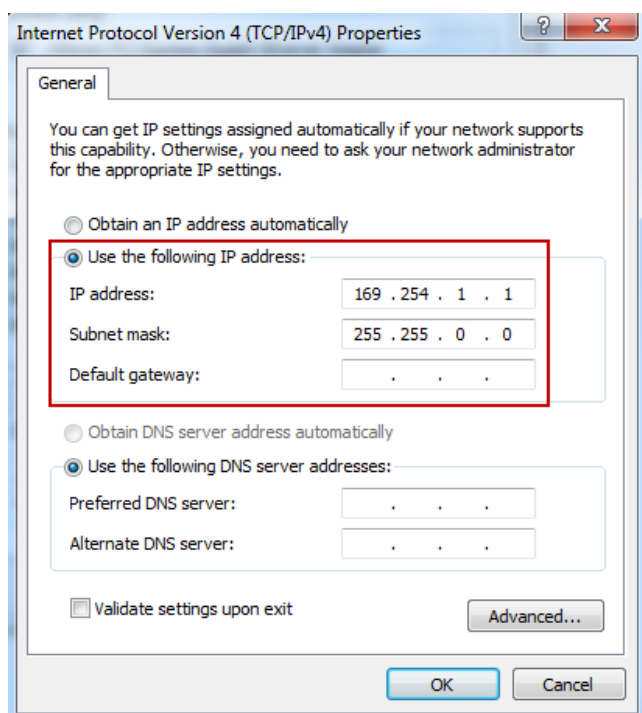
- ✓ Right-click on **[Local Area Connection]** and select **[Properties]**.



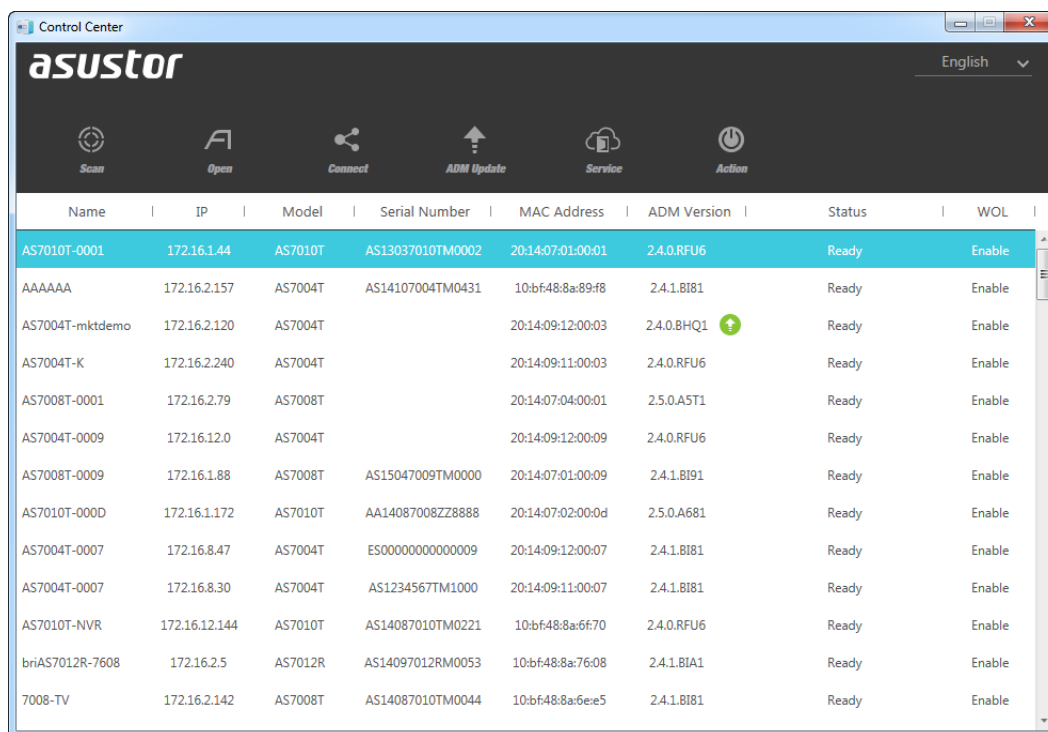
- ✓ Under the **[Networking]** tab select **[Internet Protocol Version 4 (TCP/IPv4)]** and click on **[Properties]**.



- ✓ Under the **[General]** tab select the **[Use the following IP address]** radio button. Set the **[IP address]** to **169.254.1.1** and the **[Subnet mask]** to **255.255.0.0** and then click on **[OK]**.



- ✓ Open up ASUSTOR Control Center to scan for your NAS.



- If the above mentioned procedures have not managed to solve your problem, please contact your local ASUSTOR dealer or ASUSTOR Customer Service <http://support.asustor.com>. You are also encouraged to browse through the [ASUSTOR Knowledgebase](#).



SUPPORT.ASUSTOR.COM