

Check Out
You  @coolmaker
For How-To
Videos!



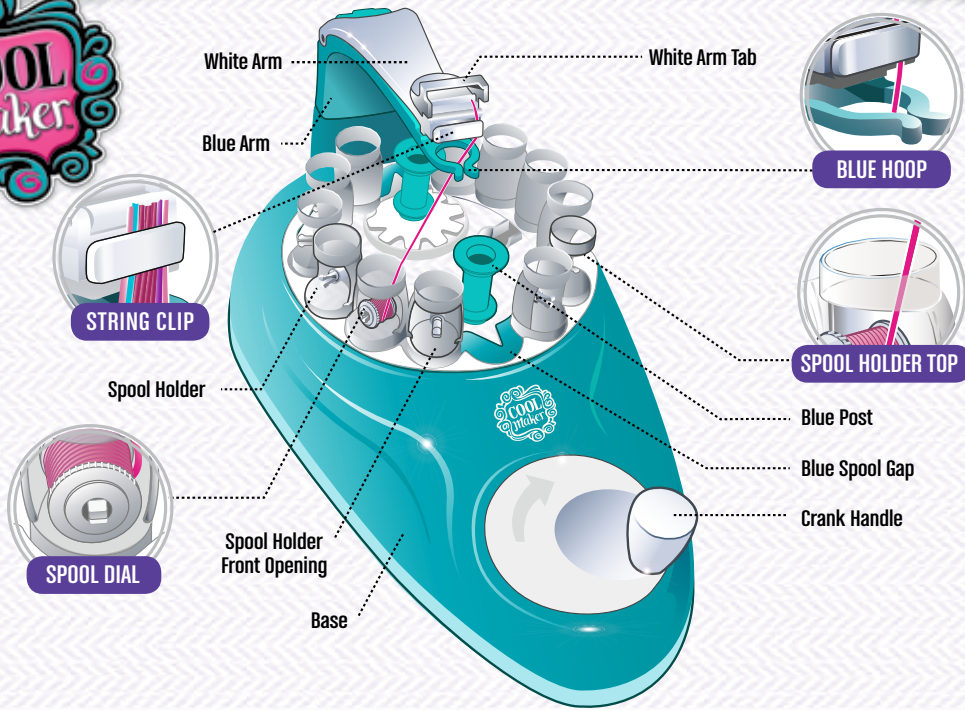
Playbook

KUMI KREATOR™

8+
YEARS

VISIT:
www.coolmaker.com







88 Spools



10 Clasps



20 End Caps



26 Clasp Stickers



1 Design Booklet



1 Measuring Guide



1 Storage Case

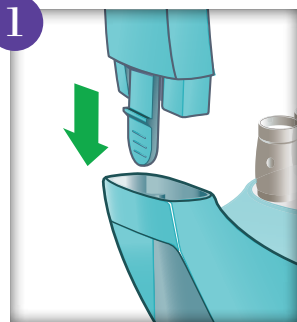


1 Playbook

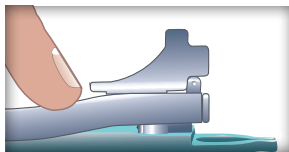
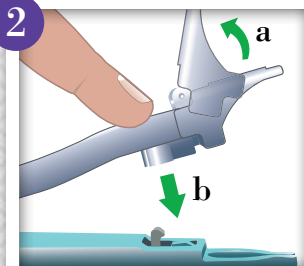
⚠ **WARNING:** STRANGULATION HAZARD - Long cord.

⚠ **CAUTION:** Use machine on a flat surface. Do not use string or yarn other than those supplied or recommended by the manufacturer. Always use under adult supervision. Do not give the accessories that are made by the Cool Maker™ KumiKreator™ to children under 3 years.

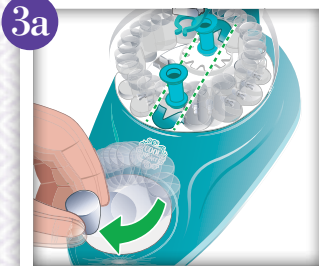
STAGE 1



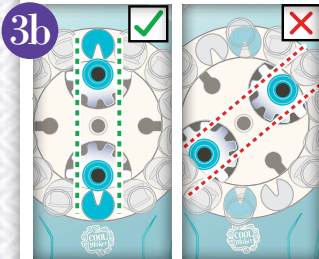
- Attach the blue arm to the base.



- Flip white arm tab up. Push white arm down with finger.



- Turn handle clockwise.



- Keep turning until blue spool gaps and blue posts are lined up at the top and bottom of the machine.

STAGE 2

1



- Select a bracelet design from the design booklet and count out the colored spools needed.

2



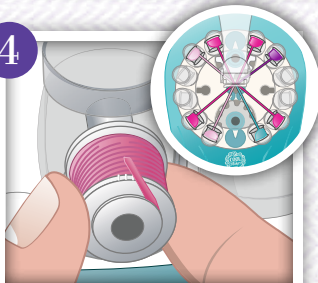
- Gather your materials. Safety scissors required, not included.

3



- Hold spool with string end facing out.

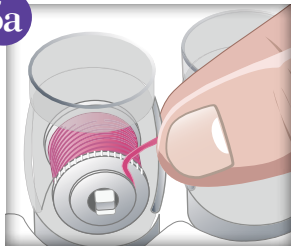
4



- Insert spool into spool holder until it clicks in place following the design template.

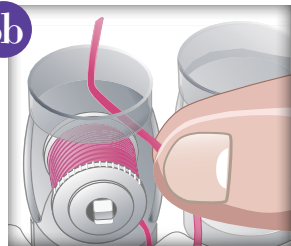
TIP: For easy loading turn spool holder around so that it faces out.

5a



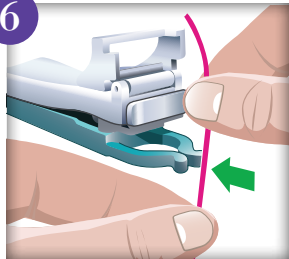
- Remove string from spool groove.

5b



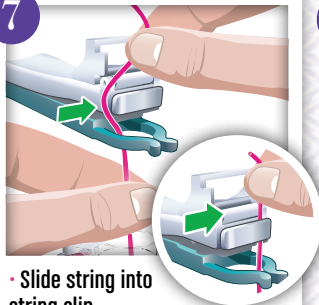
- Feed string out through the top of the spool holder.

6



- Using both hands, push string through the curved opening of the blue hoop.

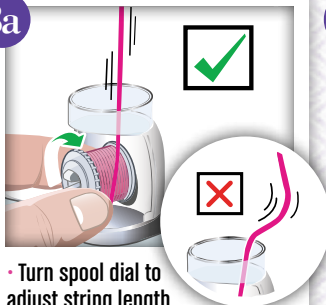
7



- Slide string into string clip.

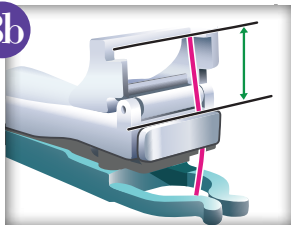
*** Adult assistance may be required.**

8a



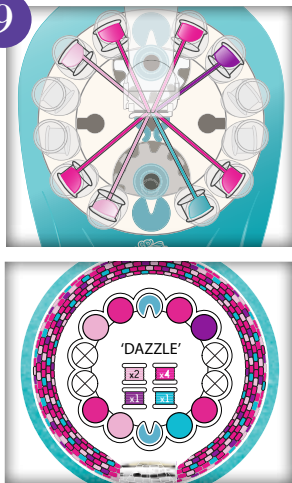
- Turn spool dial to adjust string length and tightness

8b



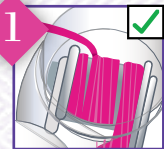
- The string end should fall between the black lines as shown in above image.

9

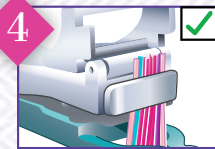
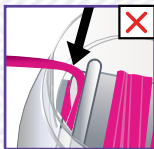


- Load Kumikreator™ with the rest of the spools following your bracelet design.

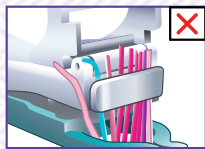
Is Your Machine Ready?



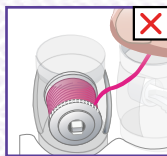
☐ String is not between spool and spool holder.



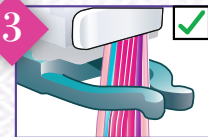
☐ All strings are inserted into white string clip.



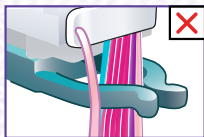
☐ String is pulled out from top of the spool holder.



☐ String is straight and tight.

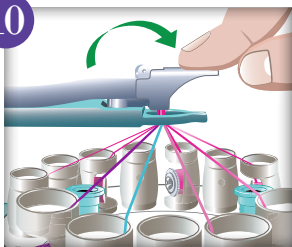


☐ All strings are in the blue hoop.



***Once you've checked ALL the boxes, you're ready for the next steps!**

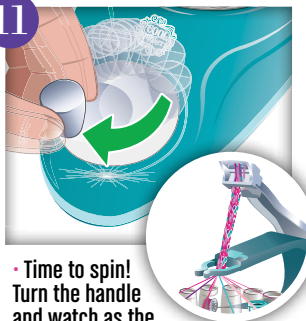
10



- Push white arm tab down, to unlock white arm.



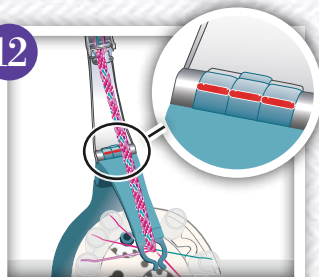
11



- Time to spin! Turn the handle and watch as the KumiKreator™ magically braids your friendship bracelet.

TIP: If machine jams, visit COOLMAKER.COM

12



- When the red lines meet, your bracelet is finished braiding.



STAGE 3

1a



- Peel a clasp sticker.

1b



1c



- **Pinch sticker tightly around the braid, just below white arm tab.**

1d



2



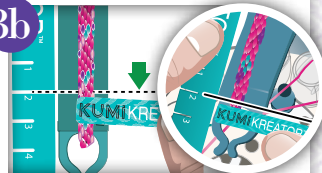
- Use the measuring guide to find out your size. Wrap around your wrist and slide the star into the size number that fits.

3a



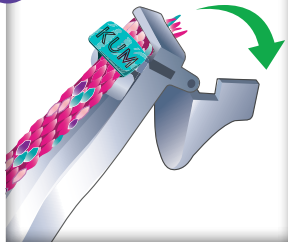
- Measure bracelet length using the measuring guide. Hold the star right below the clasp sticker.

3b



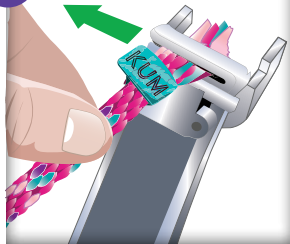
- Place another clasp sticker at the bottom of the bracelet, just below your size number.

4



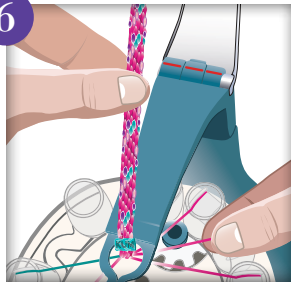
- Pull the white arm tab back to unlock the bracelet.

5



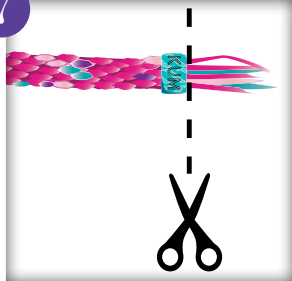
- Slide bracelet out from string clip.

6



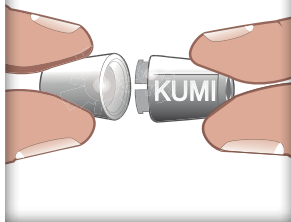
- Pull each string out of its spool and remove bracelet from Kumikreator™.

7



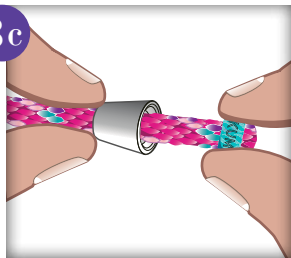
- Trim bracelet with scissors on the outside of each sticker.

8a



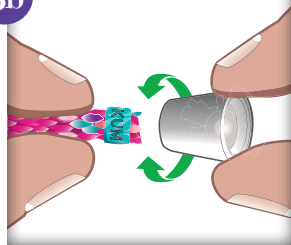
- Take apart a clasp.

8c



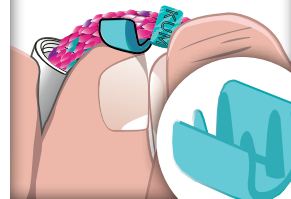
- Pull bracelet out.

8b



- Insert by twisting smaller side of clasp into a bracelet end.

8d



- Place an end cap below the sticker.

9a



- Pull the end cap into the clasp.

9b



TIP: Trim excess string for best results

10



- Repeat on the other end to finish your bracelet!

11



- Remove the empty spools from the spool holders.
- Follow STAGES 1-3 to create a new bracelet.



PROBLEM:	SOLUTION:
1 White Arm Does Not Move Up	Make sure: <ul style="list-style-type: none"> <input type="checkbox"/> String is not between spool and spool holder. <input type="checkbox"/> String is pulled out from top of spool holder. <input type="checkbox"/> All string is gathered in blue hoop. <input type="checkbox"/> White arm tab is down.
2 String is Too Loose	Use spool dial to tighten string.
3 String Comes Out of the White String Clip	Slide string back into string clip.
4 Braid Looks Bubbly	Refer to “Is Your Machine Ready?” checklist on page 8. Make sure you’ve followed each step.



Be a Cool Maker!™



Sew it
with the
SEW N' STYLE MACHINE!



Shape it
with the
POTTERY STUDIO!



Color it
with the
TIDY DYE™ STATION!



Each sold separately.

YouTube
@coolmaker



TM & © Spin Master Ltd. All rights reserved. Patent pending. Remove all packaging before use. Retain this information, addresses and phone numbers for future reference. Content may vary from pictures. An adult should periodically check this toy to ensure no damage or hazards exist, if so, remove from use. Children should be supervised during play. Meets CPSC Safety Requirements.

SPIN MASTER LTD., 450 FRONT STREET WEST,
TORONTO, ON M5V 1B6 CANADA
www.spinmaster.com Imported into EU by
SPIN MASTER INTERNATIONAL, S.A.R.L.,
20 RUE DES PEUPLIERS, L-2328, LUXEMBOURG

Be a Cool Maker™!

www.coolmaker.com

Spin Master Ltd. reserves the right to discontinue use of the www.coolmaker.com website at any time. The YouTube logo and YouTube icon are trademarks of Google Inc. The Instagram Glyph logo is a trademark of Instagram, LLC in the United States and elsewhere.

MADE IN CHINA Patent Pending.
(T37507_0001_20090588_GEN_IS_R3)

⚠ **WARNING:** CHOKING HAZARD - Small parts.
⚠ **WARNING:** STRANGULATION HAZARD - Long cord.

