

BONECO
healthy air

TRADITION SINCE 1956
 A SWISS COMPANY

F220/F230

MANUAL



READ AND SAVE THESE INSTRUCTIONS

Gebrauchsanweisung	3
Instructions for use	13
Mode d'emploi	23
Istruzioni per l'uso	33
Gebruiksaanwijzing	43
Instrucciones de uso	53
Használati útmutató	63
Instrukcja obsługi	73
Bruksanvisning	83
Käyttöohjeet	93
Brugsanvisning	103

Bruksanvisning	113
Upute za uporabu	123
Lietošanas instrukcija	133
Naudojimo instrukcijos	143
Kasutusjuhend	153
Návod k použití	163
Návod na používanie	173
Navodila za uporabo	183
Руководство по эксплуатации	193
取扱説明書	203
사용 설명서	213

INSTRUCTIONS FOR USE BONECO F220/F230

TABLE OF CONTENTS

Technical data	17
Introduction	18
Items included	18
Overview and part names	19
Start-up	20
Handling	21
Handling	21
Alignment	21
Height adjustment	21
Positioning tips	22
Notes on output	22
Air-conditioning System (AC)	22
Fresh air	22
Multiple floors	22
Rooms with high ceilings	22
Cleaning	23
Safety instructions	23
Cleaning the housing	23
Cleaning the fan blades	23
Disassembly and storage	24

TECHNICAL DATA

Technical data*		
Model	BONECO F220 – BONECO F230	
Power supply voltage	220 – 240V ~ 50Hz	
Power consumption	33 W (max. level)	
Operation noise level	58 dBA (max. level)	
Air flow	1260 m ³ /h	
Air-speed	3.9 m/sec	
Dimensions L×W×H	BONECO F220	375 × 375 × 850 mm (with one connector piece)
	BONECO F230	375 × 375 × 1210 mm (with two connector pieces)
Weight (empty)	BONECO F220	6,7 kg
	BONECO F230	8,9 kg

* Subject to change

INTRODUCTION

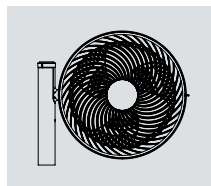
DEAR CUSTOMER,

Congratulations on your purchase of the BONECO Air Shower Fan. These high-performance units seamlessly adapt to your needs. When set to the lower output levels, they provide a pleasant breeze in your home on hot days. On the other hand, if you use an air-conditioning system, the unit's powerful fan distributes the air throughout the room ensuring a uniform temperature.

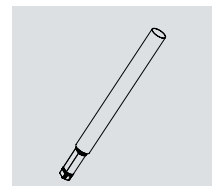
In developing the BONECO Air Shower Fan, low maintenance and durability were of primary importance. The fan blade's one-of-a-kind shape creates a uniform air flow using minimal energy, which is also good for the environment. The elegant design harmonizes with any decorative style so that you can use your BONECO Air Shower Fan throughout the entire year.

We hope you enjoy your new BONECO Air Shower Fan!

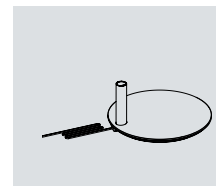
ITEMS INCLUDED



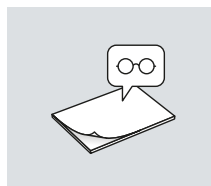
BONECO fan unit



Removable connector piece
(F220: 1×/ F230: 2×)



Base with power cord

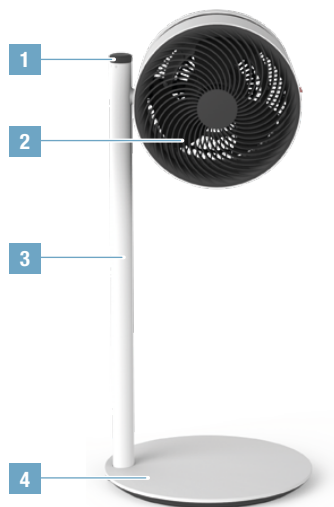


Manual

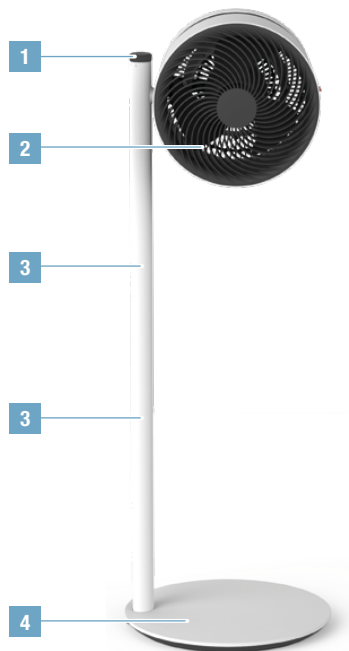


Safety instructions

OVERVIEW AND PART NAMES



BONECO F220
Air Shower Fan



BONECO F230
Air Shower Fan

- 1 Output regulator
- 2 Fan unit
- 3 Removable connector piece
- 4 Base with power cord

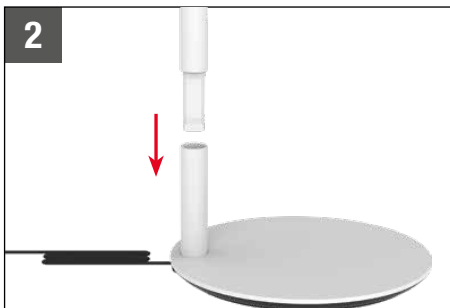
START-UP

1



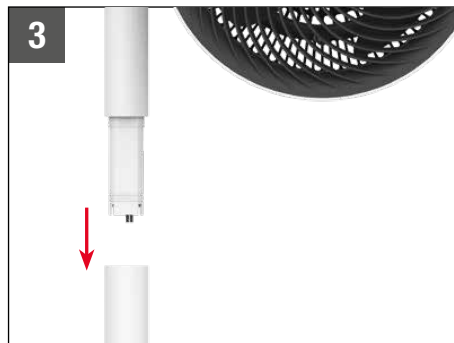
Only place the base on a stable, level surface.

2



Insert the connector piece into the base.

3



Set the fan unit onto the connector piece.

4



Plug the power cord into a power outlet.

5



Adjust the output using the control.

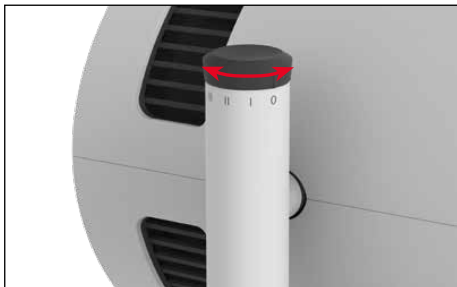
i BONECO F220 and BONECO F230 are only different in that the BONECO F230 includes a second connector piece.

i You can use the fan unit with one, with a second or without connector pieces. It can be customized to your needs.

HANDLING


HANDLING

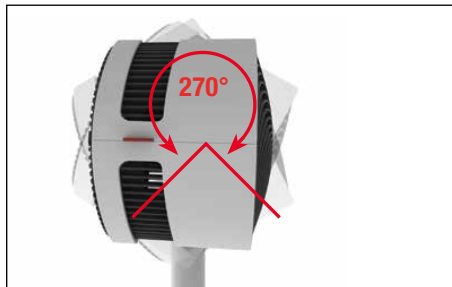
All BONECO Air Shower fans are designed for easy handling. The output is adjusted in four levels using a single control: 0 > I > II > III > IV



ALIGNMENT


The fan unit can be manually tilted 270 degrees.

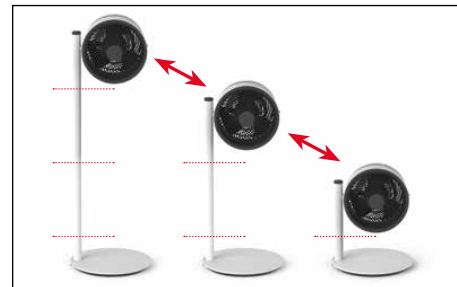
 The fan unit does not rotate a full 360 degrees.



HEIGHT ADJUSTMENT

All electrical components are completely integrated in the connector. Therefore, you can adjust the height at any time by adding connector pieces or by pulling sharply to remove them.

 For safety reasons, a maximum of two connector pieces can be used at once.



POSITIONING TIPS

NOTES ON OUTPUT

All BONECO Air Shower fans are equipped with a high-performance fan that can move large amounts of air. Making use of this feature: Guide the air in a specific direction to achieve an uniform room climate. The following examples illustrate how to do this.

AIR-CONDITIONING SYSTEM (AC)

An air conditioner distributes temperature in various ways. Use the BONECO Air Shower Fan to move the warm air towards the air-conditioning system. This can be done directly or indirectly via air circulation, as shown in this image.



MULTIPLE FLOORS

In the summer, it can become hot and muggy on the upper floors. The powerful BONECO Air Shower Fan directs the cool air from the ground floor to multiple floors achieving a uniform temperature.



FRESH AIR

The BONECO Air Shower Fan helps you achieve better ventilation indoors. If cross-ventilation is not created, guide fresh air directly from the window into the desired room.




ROOMS WITH HIGH CEILINGS


In air-conditioned rooms with high ceilings, the cold air sinks to the floor while the warm air rises to the ceiling. Turn the BONECO Fan straight up for an air-shower sensation.



CLEANING

SAFETY INSTRUCTIONS

 Always unplug the BONECO Air Shower Fan before you begin cleaning! Failure to do so can result in electric shock and fatal injury!

 Do not use alcohol or corrosive cleaning agents for cleaning.

CLEANING THE HOUSING

All BONECO Air Shower fans are designed for low-maintenance operation, even after years of use. In most cases, a dry cloth can be used for cleaning.

If stubborn dirt is present, clean the housing using a damp cloth. Add a small amount of dishwashing detergent to the water.

CLEANING THE FAN BLADES

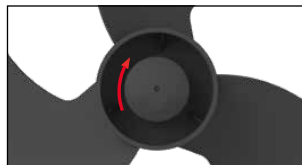
1. Tilt the fan unit upwards and loosen the safety screw.



2. Remove the front grill by turning it counterclockwise slightly.





3. Loosen the safety screw in the middle clockwise.

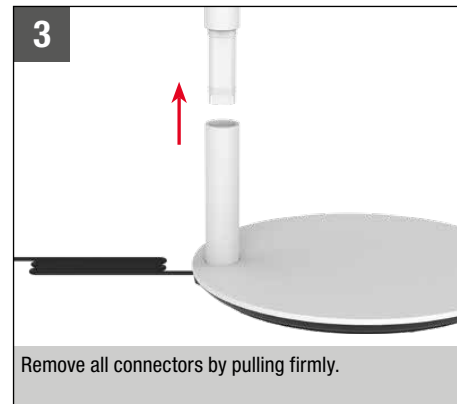
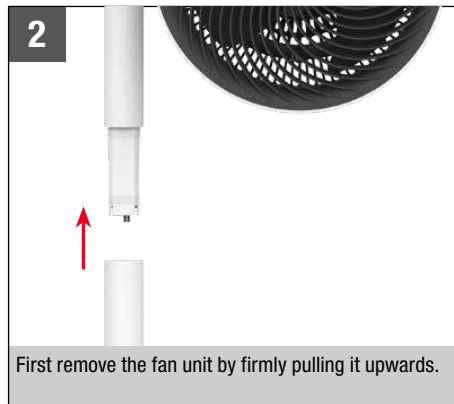
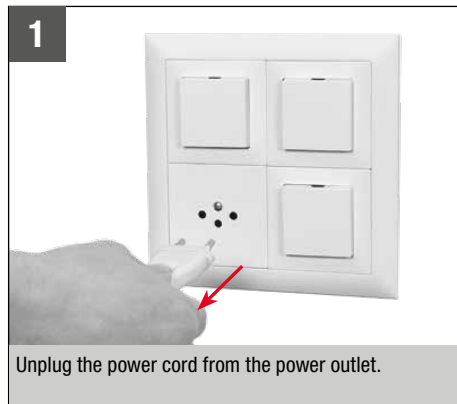


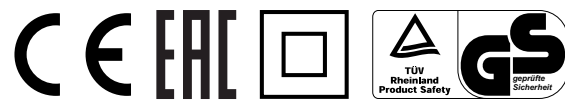
4. Remove the fan blades and clean them with a damp cloth.
5. Put the unit back together by following the steps in reverse order.
6. Attach the front grill with the safety screw. When doing so, pay attention to the position of the screw on the front grill.



DISASSEMBLY AND STORAGE

-  Please note that the removable connector pieces are detachable. When moving the unit to a new location, disassemble the unit into the detachable parts, transport the individual parts to the desired location, and then reassemble.
-  Storage is easiest and most efficient when you use the original packaging. Store the BONECO Air Shower Fan in a dry place.





BONECO
healthy air

www.boneco.com

BONECO is a registered trademark of BONECO AG, Switzerland