

# Vaporetto®

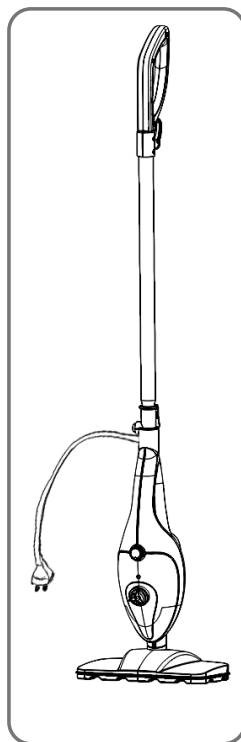
MANUALE DI ISTRUZIONI  
INSTRUCTION MANUAL  
MANUEL D'INSTRUCTIONS

MANUAL DE INSTRUCCIONES  
BEDIENUNGSANLEITUNG  
MANUAL DE INSTRUÇÕES

**REGISTRA IL TUO PRODOTTO  
REGISTER YOUR PRODUCT  
ENREGISTREZ VOTRE PRODUIT  
REGISTRA TU PRODUCTO  
GERÄTREGISTRIERUNG  
REGISTE O SEU PRODUTO  
[www.polti.com](http://www.polti.com)**

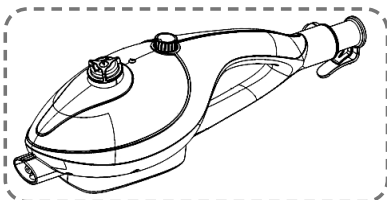


**POLTI®**  
NATURAL HOME FEELING



**TUBO IMPUGNATURA**  
HANDLE TUBE  
POIGNEE TUBE  
BARRA DE EMPUÑADURA  
ROHR HANDGRIFF  
TUBO DA PEGA

**PISTOLA VAPORE**  
STEAM GUN  
PISTOLET DE VAPEUR  
PISTOLA A VAPOR  
DAMPFPISTOLE  
PISTOLA VAPOR

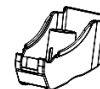


**ACCESORIO PER FUGHE**  
GROUT ACCESSORY  
ACCESSOIRE POUR JOINTS  
ACCESORIO PARA JUNTAS  
FUGENZUBEHÖR  
ACESSORIO REJUNTES

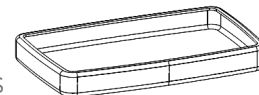
**CARAFFA**  
JUG  
CARAFE  
JARRA  
NACHFÜLLBEHÄLTER  
JARRO



**ADATTATORE PER IMBOTTITI**  
ADAPTOR FOR UPHOLSTERY  
ADAPTATEUR POUR MEUBLES REMBOURRES  
ADAPTADOR PARA TAPICERIAS  
POLSTERADAPTER  
ADAPTADOR PARA ACOLCHOADOS



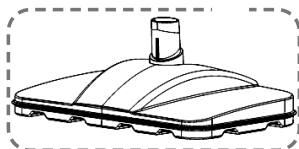
**TELAIO PER TAPPETI**  
FRAME FOR RUGS  
CADRE POUR TAPIS  
CHASIS PARA ALFOMBRAS  
RAHMEN FÜR TEPPICHE  
ESTRUTURA PARA TAPETES



**SPAZZOLINO TONDO**  
ROUND BRUSH  
BROSSE RONDE  
CEPILLO REDONDO  
RUNDBÜRSTE  
ESCOVA REDONDA



**LANCIA**  
LANCE  
LANCE  
LANZA  
DÜSE  
LANÇA



**SPAZZOLA RETTANGOLARE**  
RECTANGULAR BRUSH  
BROSSE RECTANGULAIRE  
CEPILLO RECTANGULAR  
RECHTECKIGE BÜRSTE  
ESCOVA RETANGULAR

**CUFFIA**  
CAP  
BONNETTE  
FUNDA  
KAPPE  
TOUCA

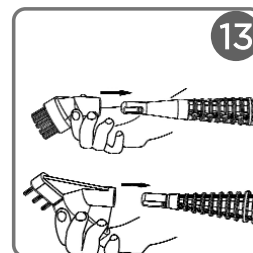
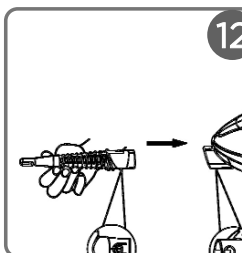
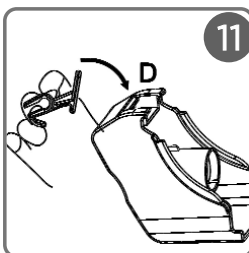
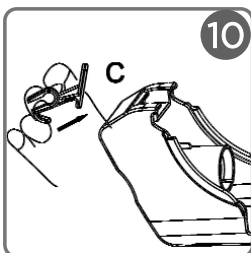
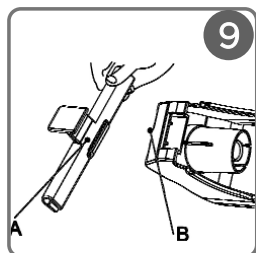
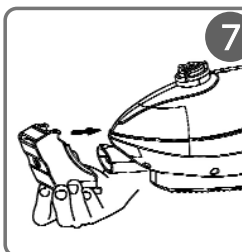
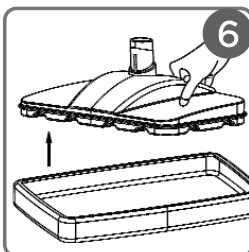
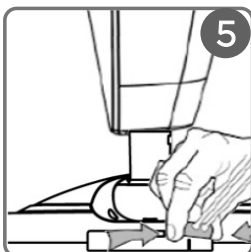
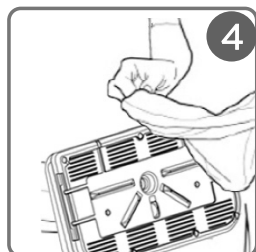
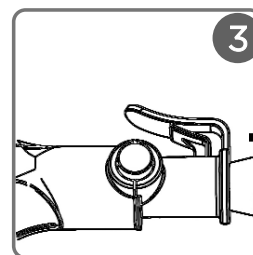
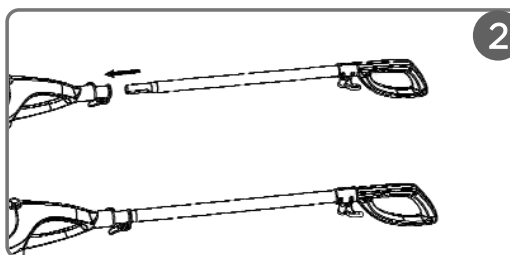
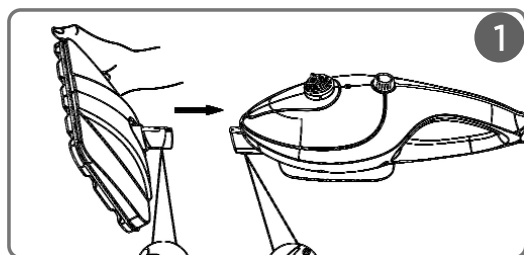


**PAEU0307**

**PANNO SPAZZOLA**  
CLOTH FOR BRUSH  
CHIFFON BROSSSE  
PAÑO CEPILLO  
BÜRSTENTUCH  
PANO ESCOVA



**TELAIO LAVAVETRI**  
WINDOW-CLEANING FRAME  
RACLETTE LAVE-VITRES  
CHASIS LIMPIACRISTALES  
FENSTERREINIGERRAHMEN  
ESTRUTURA LAVA-VIDROS



# WELCOME TO THE WORLD OF VAPORETTO

THE ALL-IN-ONE CLEANING SYSTEM THAT CLEANS DOMESTIC SURFACES IN ONE GO, ELIMINATING MITES, GERMS AND BACTERIA WITHOUT THE USE OF CHEMICAL DETERGENTS.



## ACCESSORIES FOR ALL NEEDS

On our web site [www.polti.com](http://www.polti.com) and in good appliance shops you will find a wide range of accessories to increase the performance and the practical applications of your appliances to make home cleaning even easier.

To check the compatibility of an accessory with your appliance, search the code PAEUXXXX listed next to each accessory on page 2.

If the accessory code you wish to buy is not listed in this manual, please contact our Customer Service team for more information.



## REGISTER YOUR PRODUCT

Visit our website [www.polti.com](http://www.polti.com) or call our Customer Services department to register your product.

You can benefit from a special welcome offer and keep up to date on all the latest Polti news, as well as buy accessories and consumables.

To register your product, in addition to your personal information, you must enter the serial number (SN) which you will find on the silver label, located on the box and underneath the appliance.

To save time and have your serial number to hand, write it in the space provided on the back cover of this manual.

# SAFETY WARNINGS

## IMPORTANT PRECAUTIONS FOR USE



WARNING! BEFORE USING THE APPLIANCE, CAREFULLY READ ALL THE INSTRUCTIONS AND WARNINGS IN THIS MANUAL, AND ON THE APPLIANCE ITSELF.



Polti S.p.A. declines all liability for any accident deriving from any improper use of this appliance.

Correct use of the product is only as detailed in this instruction manual.

Any use which does not comply with these instructions will invalidate the warranty.

### SAFETY SYMBOLS:



WARNING: High temperature. Risk of scalding!

If shown on the product, do not touch as parts may be very hot.



WARNING: Steam.

Risk of scalding!

This appliance reaches very high temperatures. Incorrect use of the device can cause scalding.

- Never disassemble or carry out maintenance on the appliance apart from that indicated in this manual. In the event of a fault or malfunction, do not try and repair the appliance yourself. In the event of a heavy knock, fall, damage or fall into water, the appliance may not longer be safe to use. Incorrect use or a lack of respect for the instructions herein may lead to serious accidents. Always contact Authorised Service Centres.
- This appliance can be used by children over 8 years old, by people with reduced physical, sensory or mental abilities or by inex-

perienced persons only where they are instructed in advance on its safe use and only if informed of the dangers related to the product. Children must not play with the appliance. The cleaning and maintenance of the appliance may not be done by children without the supervision of an adult. Keep the appliance and the power cable out of the reach of children under 8 years of age when the appliance is on or during the cooling phase.

- Keep all the parts of the packaging out of the reach of children; they are not toys. Keep the plastic bag out of the reach of children: danger of suffocation.
- This appliance is destined exclusively for indoor domestic use. **In order to reduce the risk of accidents, including: fires, electrocution, personal injury and scalding, both during use and during preparation, maintenance and storage, always take the fundamental precautions listed in this manual.**

## RISKS CONNECTED TO THE POWER SUPPLY – ELECTROCUTION

- The earthing system and highly sensitive residual-current circuit breaker, complete with magnetothermic cut-out for your domestic system, guarantee safe use of electrical appliances. Therefore, for your own safety, check that the electrical system to which the appliance is connected complies with current laws.
- Do not connect the appliance to the mains if the voltage does not correspond with that of the domestic electrical circuit in use.
- Do not overload the sockets with adaptors and/or transformers. Only connect the product to a single socket with current that is compatible with the supplied plug.
- Do not use electrical extension leads that are unsuitable for the power rating or which are not compliant with law. They may overheat and possibly lead to short circuiting, fire, power outage or damage to the equipment. Only use extension leads which are certified, suitable for the power rating, supporting

16A or power above 2220W, and earthed.

- To remove the plug from the socket, do not pull the power cable, but hold the plug itself to avoid damage to the plug and the cable.
- Always unplug the appliance if it is not in use and before any preparation, maintenance or cleaning operation.
- The appliance must not be left unattended if plugged in to the mains.
- Fully unwind the cable from the cable winder before connecting the appliance to the mains and before use. Always use the product with the cable completely unwound.
- Do not pull or jerk the cable or expose it to tensions (twisting, crushing or stretching). Keep the cable away from hot and/or sharp surfaces and elements. Avoid crushing the cables in doors and windows. Do not pull the cable tight around corners. Avoid treading on the cable. Do not pass over the cable with the appliance. Do not wind the power cable around the appliance, especially if the appliance is hot.
- Do not substitute the plug on the power cable.
- If the power cable is damaged, it must be replaced by the manufacturer, its service agent or similarly qualified persons in order to avoid all possible hazards. Do not use the product if the power cable is damaged.
- Do not touch or use the appliance barefoot and/or with wet body or feet.
- Do not use the appliance near containers full of water, e.g. sinks, baths and swimming pools.
- Do not immerse the appliance, including the power cable and plug, in water or other liquids.
- Steam must not be directed towards equipment containing electric or electronic components.

## RISKS DURING USE OF THE PRODUCT – INJURIES/SCALDING

- The product should not be used in areas where there is a danger of explosions or in the presence of toxic substances.
- Do not pour toxic substances, acids, solvents, detergents, corrosive substances and/or explosives or perfumes into the tank.
- Only pour water or the water mix indicated in the Chapter “WHICH WATER TO USE” into the tank.
- Do not direct the steam jet onto toxic substances, acids, solvents, detergents or corrosive substances. The handling and removal of dangerous substances must be carried out according to the indications of the manufacturers of these substances.
- Do not direct the steam jet onto explosive powders or liquids, hydrocarbons, open flames and or extremely hot objects.
- Re-wind the cable when the appliance is not in use.
- Do not position the product near sources of heat such as fireplaces, stoves and ovens.
- Do not obstruct the openings and grills on the product.
- Do not direct the steam jet on any part of the body of people or animals.
- Do not direct the steam jet on clothes while they are being worn.
- Cloths and rags and fabrics which have been subjected to a deep steam reach very high temperatures, above 100°C. Wait a few minutes and check that they have cooled before handling them. Therefore, avoid contact with the skin if they have just been steamed.



## CORRECT USE OF THE PRODUCT

This appliance is intended for home use as a steam cleaner as described and in accordance with the instructions provided in this manual. Please read these instructions carefully and keep them. If this manual is lost, it can be consulted and/or downloaded from the website [www.polti.com](http://www.polti.com).

The appliance only functions correctly with the tank inserted, and complete with all its parts.

Correct use of the product is only as detailed in this instruction manual. Any other use may damage the appliance and invalidate the warranty.

## INFORMATION FOR USERS

Pursuant to European Directive 2012/19/EU, regarding electric and electronic appliances, this appliance must not be disposed of with domestic waste, but sent to an official collection facility. This appliance complies with EU Directive 2011/65/EU



The crossed-out bin symbol on the appliance indicates that, at the end of its useful lifespan, the product must be disposed of separately from other waste. Therefore, at the end of its life, the user must handover the appliance to an appropriate collection centre for electric and electronic waste. Proper separate waste collection to facilitate the subsequent recycling, treatment and environmentally compatible disposal of the appliance helps to prevent negative effects on the environment and human health, and promotes recycling of the materials the product is made of. Unlawful disposal by the owner involves the application of the administrative sanctions envisaged by current legislation.

Before leaving our factory all our products are rigorously tested. This is the reason why your VAPORETTO may contain some residual water in the boiler.

## WHICH WATER TO USE

This appliance has been designed to work with widely available demineralised water. Never use tap water, distilled water, rain water or water containing additives (e.g. starch, perfumes), or water produced by other domestic appliances. Do not use chemical substances or detergents.

## IMPORTANT

Vaporetto SV205 is a practical appliance with 5 cleaning settings, ideal for floors, rugs, glass, upholstery and tile grouting. It can be used in two ways: Steam Broom and Steam Gun.

## 1. PREPARATION

- 1.1 Remove the appliance from the packaging, checking that the product is whole and that all the parts are there.
- 1.2 Turn the water tank cap anti-clockwise to open it, and fill the tank with demineralised water using the jug.
- 1.3 Close the cap.
- 1.4 The appliance is ready in Steam Gun mode.

**Do not add other substances or additives to the tank.**

This operation must always be carried out with the power cable disconnected from the mains.

## 2. PREPARATION FOR STEAM BROOM USE

- 2.1 Connect the portable appliance to the brush, matching the pin on the brush with the hole on the portable appliance (1).
- 2.2 Position the cloth under the brush (4) and fasten by pulling the cord (5).
- 2.3 Make sure that the ignition/steam-adjustment dial is in the "OFF" position.
- 2.4 Connect the handle tube to the coupling hole (2), making sure that the pin on the handle tube matches with the hole on the portable appliance (3). To remove the handle tube, just press the pin on the tube and pull it. By inserting the tube, an internal micro-switch is activated, which will start steam emission.
- 2.5 Plug the power lead into a suitable socket with an earth connection.



### 3. CLEANING HARD FLOORS

Ensure that the points in Sections 1 and 2 have been followed.

3.1 Turn the ignition/steam-adjustment dial clockwise, from the "OFF" position to one of the three steam-adjustment positions; for this type of surface, we recommend the **maximum steam level**.

The "steam ready" indicator light will come on to indicate that the appliance is on (heating).

**WARNING:** If the ignition/steam-adjustment dial (E) has been turned from the "OFF" position, by inserting the handle tube in the coupling hole, the appliance will start to emit steam. Always face the appliance downwards, not directing it towards people, animals or objects.

3.2 About 30 seconds after it has been turned on, the appliance will start to dispense steam

3.3 Clean the floors by moving the brush.

**WARNING:** Do not use the appliance without the cloth.

**WARNING:** To remove the cloth from the brush, turn the ignition/steam-adjustment dial to the "OFF" position, unplug the power supply from the electric socket and wait a few minutes to allow the cloth to cool.

### 4. CLEANING DELICATE FLOORS

Before using the appliance on delicate surfaces, ensure that the part in contact with the surface is free from foreign bodies that could cause scratches.

Ensure that the points in Sections 1 and 2 have been followed.

4.1 Turn the ignition/steam-adjustment dial clockwise, from the "OFF" position to one of the three steam-adjustment positions; for this type of surface, use the **minimum steam level**.

The "steam ready" indicator light will come on to indicate that the appliance is on (heating).

**WARNING:** If the ignition/steam-adjustment dial (E) has been turned from the "OFF" position, by inserting the handle tube in the coupling hole, the appliance will start to emit steam. Always face the appliance downwards, not directing it towards people, animals or objects.

4.2 About 30 seconds after it has been turned on, the appliance will start to dispense steam

4.3 Clean the floors by moving the brush.

**WARNING:** Do not use the appliance without the cloth.

**WARNING:** To remove the cloth from the brush, turn the ignition/steam-adjustment dial to the "OFF" position, unplug the power supply from the electric socket and wait a few minutes to allow the cloth to cool.

### 5. CLEANING WOODEN FLOORS

Before using the appliance on delicate surfaces, ensure that the part in contact with the surface is free from foreign bodies that could cause scratches.

Ensure that the points in Sections 1 and 2 have been followed.

5.1 Turn the ignition/steam-adjustment dial clockwise, from the "OFF" position to one of the three steam-adjustment positions; for this type of surface, use the **minimum steam level**.

The "steam ready" indicator light will come on to indicate that the appliance is on (heating).

**WARNING:** If the ignition/steam-adjustment dial (E) has been turned from the "OFF" position, by inserting the handle tube in the coupling hole, the appliance will start to emit steam. Always face the appliance downwards, not directing it towards people, animals or objects.

5.2 About 30 seconds after it has been turned on, the appliance will start to dispense steam

5.3 Clean the floors by moving the brush.

**WARNING:** Do not use the appliance without the cloth.

**WARNING:** To remove the cloth from the brush, turn the ignition/steam-adjustment dial to the "OFF" position, unplug the power supply from the electric socket and wait a few minutes to allow the cloth to cool.

**WARNING:** For additional safety, test steam delivery on a hidden part, leave the steamed part to dry to ensure that no changes in colour or deformation have occurred.

### 6. CLEANING RUGS AND CARPETS

Before using the appliance on delicate surfaces, ensure that the part in contact with the surface is free from foreign bodies that could cause scratches.

Ensure that the points in Sections 1 and 2 have been followed.

6.1 To clean rugs and carpets, rest the brush (with the cloth attached) on the special frame so that it can slide over the surface (6).

6.2 Turn the ignition/steam-adjustment dial clockwise, from the "OFF" position to one of the three steam-adjustment positions; for this type of surface, use the **medium steam level**. The "steam ready" indicator light will come on to indicate that the appliance is on (heating).

**WARNING:** If the ignition/steam-adjustment dial (E) has been turned from the "OFF" position, by inserting the handle tube in the coupling hole, the appliance will start to emit steam. Always face the appliance downwards, not directing it towards people, animals or objects.

6.3 About 30 seconds after it has been turned on, the appliance will start to dispense steam  
6.3 Clean the floors by moving the brush.

**WARNING:** Do not use the appliance without the cloth.

**WARNING:** To remove the cloth from the brush, turn the ignition/steam-adjustment dial to the "OFF" position, unplug the power supply from the electric socket and wait a few minutes to allow the cloth to cool.

**WARNING:** For additional safety, test steam delivery on a hidden part, leave the steamed part to dry to ensure that no changes in colour or deformation have occurred.

## 7. CLEANING GLASS, WINDOWS AND TILES

**WARNING:** To clean glass surfaces in particularly cold seasons, preheat the windows starting from a distance of about 50 cm from the surface.

Make sure that chapter 1 has been completed. Only use the steam gun.

7.1 Connect the adapter to the steam gun.

To connect the accessory to the accessory-connection socket (I), just insert until the accessory-locking button clicks (7). Fit the cap to the adapter (8).

7.2 Attach the frame to the adaptor by inserting hook under slot B (9), then turn the frame (10), so that hook C is wedged into slot D (11).

To mount the frame to the adaptor, it is first necessary to attach the cap to the adaptor. Do not mount the frame without having first attached the cap.

7.3 Plug the power lead into a suitable socket with an earth connection.

7.4 Turn the ignition/steam-adjustment dial clockwise, from the "OFF" position to one of the three steam-adjustment positions; for this type of surface, use the **medium steam level**.

The "steam ready" indicator light will come on to indicate that the appliance is on (heating).

7.5 About 30 seconds after it has been turned on, the appliance will start to dispense steam.

7.6 Clean the surface.

Windows should be cleaned in 2 stages:

- Steam the surface to be cleaned to dissolve the dirt, using the steam control lever;
- Rub the window-cleaner frame over it to remove the dirt, without steaming.

## 8. CLEANING UPHOLSTERY (mattresses, sofas, car interiors, etc.)

**WARNING:** Before cleaning leather or fabrics with steam, consult the manufacturer's instructions and always carry out a test on a hidden part or on a sample of the material. Allow the steamed part to dry to make sure that no changes in colour or deformations have occurred.

Make sure that chapter 1 has been completed. Only use the steam gun.

8.1 Connect the adapter to the steam gun.

To connect the accessory to the accessory-connection socket (I), just insert until the accessory-locking button clicks (7). Fit the cap to the adapter (8).

8.2 Plug the power lead into a suitable socket with an earth connection.

8.3 Turn the ignition/steam-adjustment dial clockwise, from the "OFF" position to one of the three steam-adjustment positions; for this type of surface, use the **medium steam level**.

The "steam ready" indicator light will come on to indicate that the appliance is on (heating).

8.4 About 30 seconds after it has been turned on, the appliance will start to dispense steam.

8.5 Go over the surface to be cleaned. Use of steam allows the most efficient sanitising of the surface, dissolving dirt and removing grease, germs and mites; it also brightens the colour of fibres.

## 9. CLEANING BATHROOM FIXTURES, GROUTING AND KITCHEN WORKTOPS

Make sure that chapter 1 has been completed.

9.1 Connect the lance to the steam gun (12). To connect the accessory to the accessory-connection socket, just insert until the accessory-locking button clicks.

9.2 Plug the power lead into a suitable socket with an earth connection.

9.3 Turn the ignition/steam-adjustment dial clockwise, from the "OFF" position to one of the three steam-adjustment positions; for this type of surface, we recommend the **maximum steam level**.

The "steam ready" indicator light will come on to indicate that the appliance is on (heating).

9.4 About 30 seconds after it has been turned on, the appliance will start to dispense steam.

9.5 Thoroughly steam the surface to dissolve the dirt. Use a dry cloth to remove the dirt dissolved by the steam. It is possible to connect the lance to the round brush to remove encrusted dirt from very narrow surfaces. The grout accessory should be used for cleaning tile grouting (13).

## 10. CLEANING FURNITURE AND DELICATE SURFACES

**WARNING:** Before cleaning the surface, always do a test on a hidden part and see how it reacts to the application of steam.

Make sure that chapter 1 has been completed.

10.1 Plug the power lead into a suitable socket with an earth connection.

10.2 Turn the ignition/steam-adjustment dial clockwise, from the "OFF" position to one of the three steam-adjustment positions; for this type of surface, use the **minimum steam level**.

The "steam ready" indicator light will come on to indicate that the appliance is on (heating).

10.3 About 30 seconds after it has been turned on, the appliance will start to dispense steam.

10.4 Steam the cloth.

**WARNING:** Do not direct the steam jet directly onto surfaces.

10.5 Use the cloth previously steamed to clean the surface, avoiding prolonged use on the same spot.

## 11. OTHER GENERAL USES

**WARNING:** Before cleaning the surface, always do a test on a hidden part and see how it reacts to the application of steam.

### 11.1 BRIGHTENING UP CURTAINS AND DRAPES

Mites and dust can be removed from curtains and drapes by steaming the fabric with just the handle. The steam is able to remove odours and brighten up colours, allowing the fabric to be washed less frequently.

For this surface, set the steam to the **minimum level**.

### 11.2 REMOVING STAINS FROM CARPETS AND UPHOLSTERY



**WARNING:** Steam.  
Risk of scalding!

Connect the lance, direct the steam directly on to the stain with the greatest angle possible (never vertically to the surface to be cleaned) and place a cloth beyond the stain to collect the dirt that has been "blown" away by the steam pressure.

For this surface, set the steam to the **minimum level**.

### 11.3 TAKING CARE OF PLANTS AND HUMIDIFYING ROOMS

To take care of your house plants, remove the dust from the leaves using just the handle, vacuuming the surface: adjust the steam to the **minimum level** and vacuum at a distance of 50 cm. Plants breathe better and will be cleaner and brighter. Furthermore, you can also use the steam to refresh spaces, especially those frequented by smokers.

## 12. OUT OF WATER

The water level is always visible thanks to the transparent tank.

When the water inside the tank has been used up, steam will stop being released.

To restart operations just fill the water tank again as described in the chapter 1.

**WARNING:** This operation must always be done after having disconnected the appliance from the mains.

### 13. GENERAL MAINTENANCE

Ensure that the appliance is switched off and disconnected from the mains.

To clean the outside of the appliance, only use a damp cloth and tap water.

All accessories can be cleaned using running water, ensuring they are completely dry before the next use.

Do not use detergents of any type.

The cloths provided can be washed by following the instructions included on the label.

### 14. STORAGE

14.1 Turn off the appliance and disconnect from the mains electricity.

14.2 Completely empty the water tank to avoid water leaks.

14.3 Before detaching the cloth from the brush, wait a few minutes to allow it to cool.

14.4 Wind the power cable around the special cable rewinds.

Before using the appliance again, remember to unwind the power cable completely. The upper cable winder rotates 180° in order to wind up the power cable quickly.

**WARNING:** Do not keep the appliance connected to the power supply with the cable wound up.

## 15. TROUBLESHOOTING

PROBLEM	CAUSE	SOLUTION
The appliance does not turn on	No power	Check that the appliance has been disconnected from the mains, as indicated in Section 2.
	Power/adjustment dial in the OFF position.	Turn the power/adjustment dial to one of the three steam-adjustment settings.
Does not dispense steam	Boiler out of water	Disconnect the appliance from the mains, fill the water tank and wait about 30 seconds.
	Appliance turned off.	Switch on the appliance by turning the power/adjustment dial to one of the three steam-adjustment settings.
Steam is weak or intermittent.	Steam adjustment dial set to the minimum.	Increase the steam by turning the power/adjustment dial to a higher setting.
The product leaves too much water on the floor	Steam adjustment dial set to the maximum.	Reduce the quantity of steam to the minimum. If necessary, momentarily stop the disbursement of steam, while continuing to rub the surface.
Floor marked/dirty	Dirty cloth	Clean the floor again, changing the cloth.
If problems persist or are not listed above, please contact a Polti Authorised Service Centre ( <a href="http://www.polti.com">www.polti.com</a> for the updated list) or contact Customer Services.		

## WARRANTY

This appliance is for domestic use only and is guaranteed for two years from the date of purchase against any defects present at the time the goods are handed over; the date of purchase must be proven via a proof of purchase document valid for tax purposes and issued by the seller.

For repairs, the appliance must be accompanied by proof of purchase.

This warranty does not affect the consumer rights deriving from European Directive 99/44/EC as regards some aspects of sale and warranty of consumer goods, rights which the consumer should uphold with respect to the seller.

This warranty is valid in the countries which adhere to European Directive 99/44/EC. For other countries, local regulations on warranties apply.

### WHAT THE WARRANTY COVERS

During the warranty, Polti guarantees free repair of a product with a manufacturing or factory defect and, therefore, the client is not liable to pay for any work or materials.

In case of irreparable defects, Polti may replace the product free of charge.

To avail of the warranty, the customer should visit one of the Polti Authorised Service Centres with proof of purchase from the seller valid for tax purposes and bearing the date of purchase of the product. Without proof of purchase and the relative date of purchase, the work will be charged for. Store the proof of purchase document safely for the whole duration of the warranty.

### WHAT THE WARRANTY DOES NOT COVER

- Any fault or damage not deriving from a manufacturing defect.
- Any fault due to improper use or use other than that indicated in the instruction booklet, an integral part of the product sales contract.
- Any defect resulting from *force majeure* (fires, short circuits) or caused by third parties (tampering).
- Damage caused by the use of non-original Polti parts, and repairs or modifications performed by staff or service centres not authorised by Polti.
- Damage caused by the customer.
- Parts (filter, brush, hose, etc.) damaged by use (consumable goods) or normal wear and tear.
- Any damage caused by limescale.
- Defects resulting from lack of maintenance/cleaning according to the manufacturer's instructions.
- Assembly of non-original Polti accessories or those that have been modified or which are not suitable for the appliance.

Inappropriate use and/or use not compliant with the instructions for use and any other warnings or indications contained in this manual invalidates the warranty.

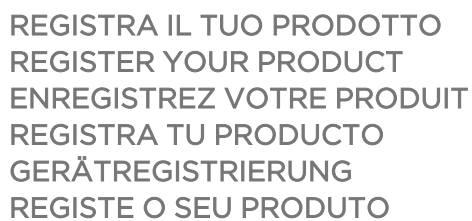
Polti takes no responsibility for any direct or indirect damage to people, objects or animals caused by non-compliance with the instructions indicated in this instruction booklet, regarding warnings for use and product maintenance.

**To see the up-to-date list of the Polti Authorised Service Centres, visit the website [www.polti.com](http://www.polti.com).**

# Vaporetto®







||—|—|—|—|—|—|—|—|—|—|—|—|—|—|—|—|—|—|

## ITALIA SERVIZIO CLIENTI

848 800 806

FRANCE SERVICE CLIENTS

04 786 642 10

ESPAÑA SERVICIO AL CLIENTE

02 351 227

PORTUGAL SERVIÇO AO CLIENTE

707 780 274

UK CUSTOMER CARE

0845 177 6584

DEUTSCHLAND KUNDENDIENST

03222 109 472 9

OTHER COUNTRIES, PLEASE VISIT [WWW.POLTI.COM](http://WWW.POLTI.COM)



**POLTI S.p.A, - Via Ferloni, 83  
22070 Bulgarograsso (CO) - Italy  
[www.polti.com](http://www.polti.com)**

Follow us:

