

BASEUS

Whale Car & Home Humidifier

User's guide

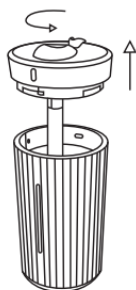
Features

1. The built-in coloured lights can be used alone or together with the product.
2. The mist is formed based on the principle of ultrasonic vibration, which effectively increases the humidity in the air.
3. Simple overall appearance brings you a comfortable experience.

Parameters

Models	DHJY-02, DHJY-04, DHJY-06
Power	2.5 W
Rated Voltage	DC 5 V
Rated Current	500 mA
Spray Volume	From 30 ml to 40 ml per hour
Capacity of the Water Tank	420 ml
Product Size	86 mm × 86 mm × 163.5 mm
Material	PP + ABS
Length of the Charging Cable	1 meter

Instructions



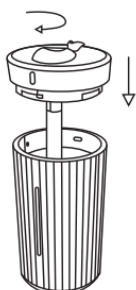
Turn counter clockwise to put on the upper cover



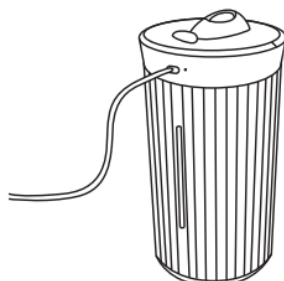
Soak the whole cotton swab with water



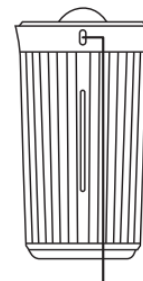
Add water



Tighten it clockwise



Plug in the USB power input



Press the key to turn on the appliance

Notes

1. The power of the product is 5 V and can be connected to the adapter of 5 V USB interface or with 5 V output. The product is only provided with USB cable without the adapter.
2. Before using this product, please open the lid first, take out the cotton swab from the plastic tube of the humidifier and soak the whole cotton swab with water.
Note that the spring under the cotton swab under the humidifier plastic pipe must not be lost. Then put the cotton swab into the plastic tube, clamp the plastic tube to the upper cover of the humidifier and finally add a proper amount of water into the water tank, then tighten the lid and turn on the power supply. The indicator light will be on. Press the switch to turn on the humidification function.
3. **Humidifier function:** Press the switch for the first time to turn on the continuous spray and the light will be on at the same time; the power will be automatically cut off in 6 hours. Press the switch for the second time and the power will be automatically cut off for 12 hours. Press the switch for the third time to turn off the humidifier and lighting functions. The light is in the colour gradient in the sequence of yellow → ice blue → white.
4. **Lighting function:** When the light is not on, press the switch for two seconds for the first time to turn on the light, and press the switch for two seconds for the second time to turn off the light.
5. When the product is not used for a long time, please keep the water tank clean and remove the cotton swab to dry in the air.
6. **Cleaning method:** Gently wipe the spray outlet with a moistened cotton swab, do not clean with the corrosive liquid and do not use paper towel. Those are easily damaged with water; the falling powder may cause blockage. Please carefully wipe the water container with clean cotton cloth and strictly protect the electronic parts from water.