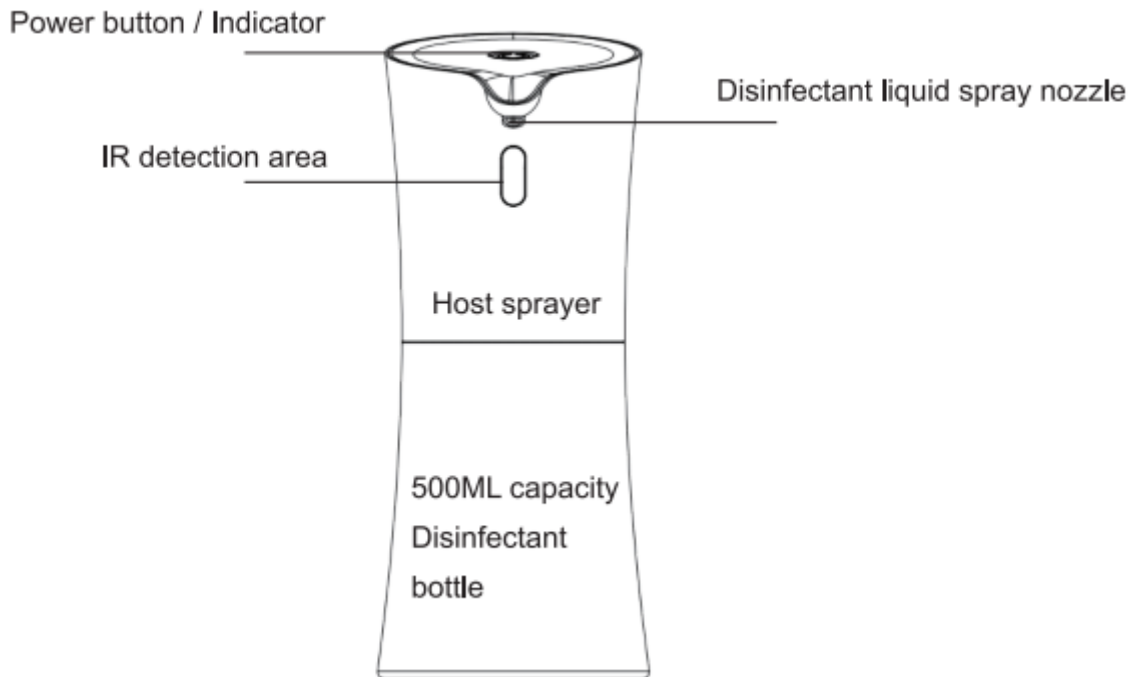


SMART AUTOMATIC DISINFECTION HAND-WASH SPRAYER-N1

User Manual

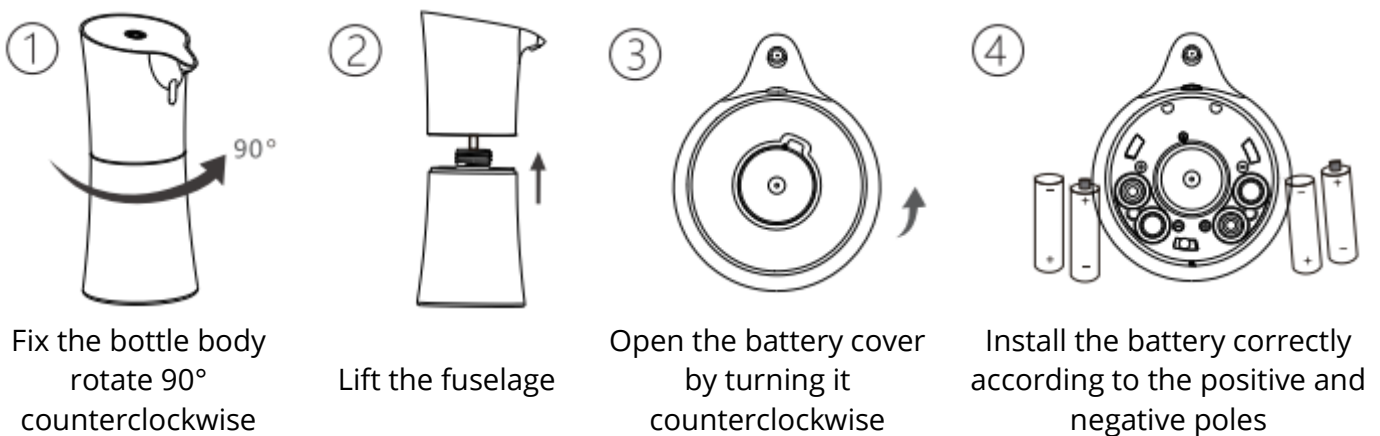
Product introduction

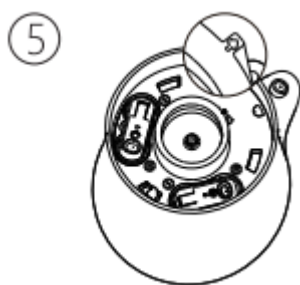
Thank you for buying our product! In order to reduce the spread of bacteria, protect yourself, And care for others, after many experiments and carefully designed designs, we have launched an smart energy-saving, beautiful automatic disinfectant hand-wash sprayer N1, hoping to bring you a safe and pleasant experience.



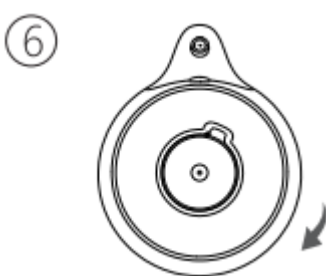
How to Assemble Battery

Please prepare four AA alkaline dry batteries after the first receipt of sprayer or when the power of the sprayer is low, and install and replace the batteries according to the following sketch. Please ensure the sprayer is powered off before installation.

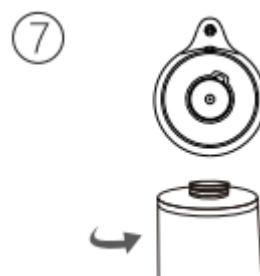




Align the unlocking mark on the battery cover with the arrow mark on the side wall of the fuselage



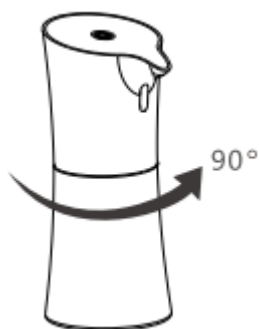
Rotate the battery cover clockwise with the lock mark aligned with the arrow mark on the side wall of the fuselage



Align the hand sanitizer with the slot on the bottom of the phone

How to add disinfectant liquid

Please load disinfectant as shown below



1. Fix the bottle body rotate 90 ° counterclockwise



2. Lift the fuselage



3. Fill with disinfectant



4. Body rotates clockwise

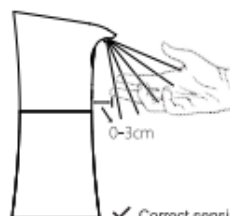
How To Use

Step 1: Install the battery correctly according to the instructions

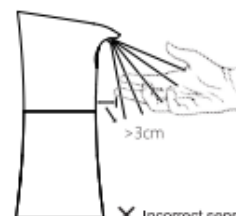
Step 2: Add disinfectant as instructed

Step 3: Tap the on key, the white light will be on

Step 4: Move your palm towards the black sensing area of the sprayer, the white indicator light will light up, spraying disinfectant



✓ Correct sensing distance



✗ Incorrect sensing distance

Step 5: Move other palm towards the black sensing area of the sprayer, the white indicator light will light up, spraying disinfectant

Note: when the sprayer is not working, it will automatically enter the standby mode. It does not need to be turned off manually.

Status	Indicator status
Turned On	Tap the power switch, the white light is on for about 2s
Turned Off	Tap the power switch, the yellow light is on for about 2s
Low battery	Yellow light keeps flashing
Spraying	White light is on

Product Parameters

Product name:	Smart Automatic Disinfection Hand-wash Sprayer
Product model:	N1
Operating Voltage:	DC 4V
Product size:	105*87*205mm
Bottle Capacity:	500ML
Battery Specifications:	AA Alkaline battery *4
Working humidity:	0% - 85% RH

Product warranty description

1. Within 7 days from the next day you purchased the product, if the product has performance failure listed in the performance failure table of device. You can get a free replacement or maintenance after being tested and confirmed by our after-sales service center;
2. During 8-15 days from the next day you got the products, if the product has any performance failure listed in the performance failure table of device. You can get a free replacement or maintenance after being tested and confirmed by our after-sales service center;
3. Within 12 months after the day you purchased the product, if the product has any performance failure listed in the performance failure table of automatic washing mobile phone, it can enjoy the maintenance service after being tested and confirmed by our after-sales service center;

Note: the illustrations of products, accessories and user interface in the manual are schematic diagrams for reference only. Due to the updating and upgrading of the product, there may be slight differences between the real product and the schematic diagram. Please refer to the real product.

Warranty-voiding regulations:

1. Unauthorized repair, misuse, collision, negligence, overuse, liquid intake, accident, modification, incorrect use of non product accessories, tears, altering label, anti-counterfeiting mark.
2. Passing beyond the warranty period.
3. Damage caused by force.
4. Failure is not the performance failure listed in the performance failure table.
5. Failure listed in the failure table of products caused by misuse or vandalism.

Maintenance and service

1. If cleaning is necessary, it is recommended to turn off the device and use a wet towel to clean the surface of the product.
2. If the product is not be used for a long time, please take out the battery to prevent the battery from contacting moisture and leakage.

Precautions

1. Don't put the product into the water or wash the device with water, to avoid short-circuits.
2. When installing or replacing the disinfectant, do not use a non special disinfectant to replace, so as to avoid machine failure.
3. Do not block the nozzle with hands or foreign matters, and do not lay down the device on its body, so as to avoid damage caused by liquids pouring into the machine body.
4. If you haven't used this product for a long time, please use clear water to pump and wash it several times, so as to avoid blockage in the pipeline.
5. When the product runs out of power or will be not used for a long time, please take out the battery. If you need to discard the battery, please dispose according to the local laws and regulations.
6. Please keep the battery out of the reach of children. When the battery indicator light is on, the battery needs to be replaced. Please follow the manual to change the battery.
7. Do not use this product in high / low temperatures, fires and other harsh environments.
8. Do not disassemble or repair the product by yourself.
9. Do not tilt the bottle when installing or replacing hand disinfectant. A small amount of liquid outflow is normal, it can still be used normally after wiping.
10. In case of water pouring, inversion and inclination, it is necessary to confirm whether the battery compartment is filled with liquid in time. If necessary, take out the battery and wipe it dry before continuing use.
11. Due to individual differences, a very small number of people may be allergic to the disinfectant. If you have allergies, please stop using, and if necessary, see a doctor.
12. Please avoid exposing the sensing area of the machine to sunlight or strong light, it will cause mis-sensing and spray disinfectant.

Fuction failure list

Fault phenomenon	Fault cause	Solution
Can not turn on or off	Wrong assemble the battery	Re-assemble the battery correctly
No indicator	Power off/Wrong assemble the battery	Re-assemble the battery correctly
Can not spray	Run out off the disinfection/low power or no power	Refill the bottle with disinfectant liquid/Change the battery
Orange indicator flash	Black sensing area blocked	Turn off the device and clean up the IR area and remove the blockage, restart the device
Automatic spray of disinfectant	Sensing area is mistakenly induced by strong light	Avoid places exposed to sunlight

After sales service information

For agentship use

Customer name:(Mr./Mrs.)

Contact phone number:

Customer add:

.....

Purchasing date:

Purchasing store:

Store add:

.....

Store phone number:

Invoice No.:

After sales service information

For customer use

Customer name:(Mr./Mrs.)

Contact phone number:

Customer add:

.....

Purchasing date:

Purchasing store:

Store add:

.....

Store phone number:

Invoice No.: