



## **Quick Installation Guide**

Realtek Driver Installation

M0304322 V2.0

The product user guide contains product features, how to use, and the operating procedure. Read the user manual carefully to get the best experience and avoid unnecessary damage. Keep this manual for future reference.

Strictly comply with applicable laws and regulations at the place of use. The device must not be used in violation of applicable legislation or for illegal purposes.

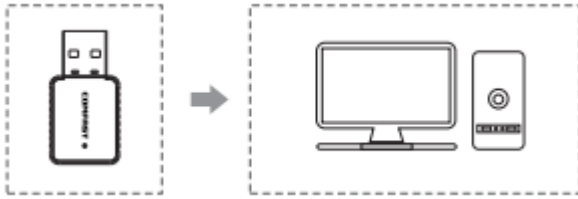
The company Alza.cz a.s. bears no responsibility if the device is used in violation of applicable legislation or for illegal purposes.

**Importer:** Alza.cz a.s., Jankovcova 1522/53, 170 00 Prague 7, [www.alza.cz](http://www.alza.cz)

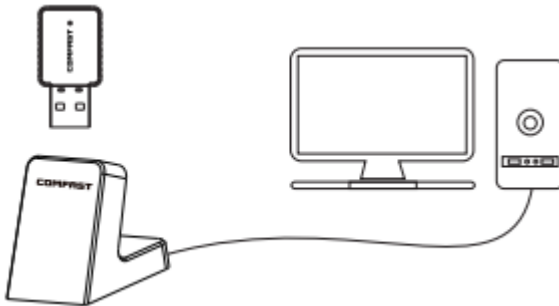
## 1. Hardware Installation

Here are two methods to install the USB adapter.

1. Insert the USB adapter directly into the computer's USB port.



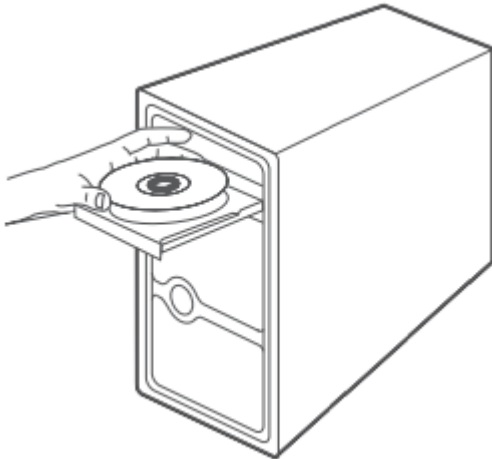
2. Connect the USB port of the computer through the USB extension cable base. (USB extension base is sold separately).



Note: When using the desktop, it is recommended to use the USB extension cable base to connect the rear interface of the computer chassis. (Most of the desktop computer's front USB interface is underpowered or unavailable.) Extend the desktop use, the effect is better!

## 2. Driver Installation

1. Put the CD driver into the computer drive.



2. Open the driver folder and double-click the installation file "Setup.exe". Click "Next" to finish the installation.

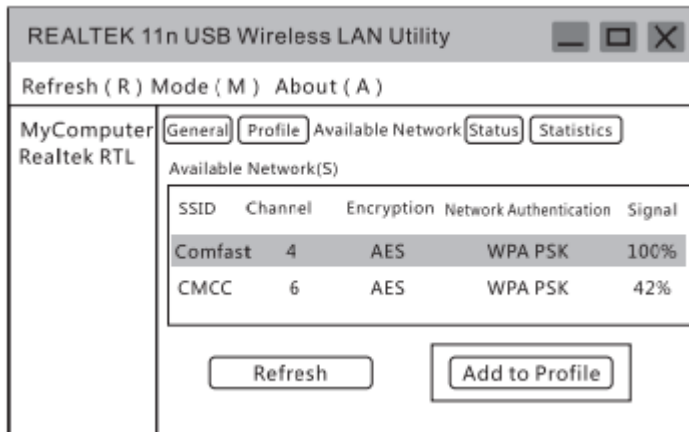
Note: If the installation file is a compressed package, you need to extract it to install it.



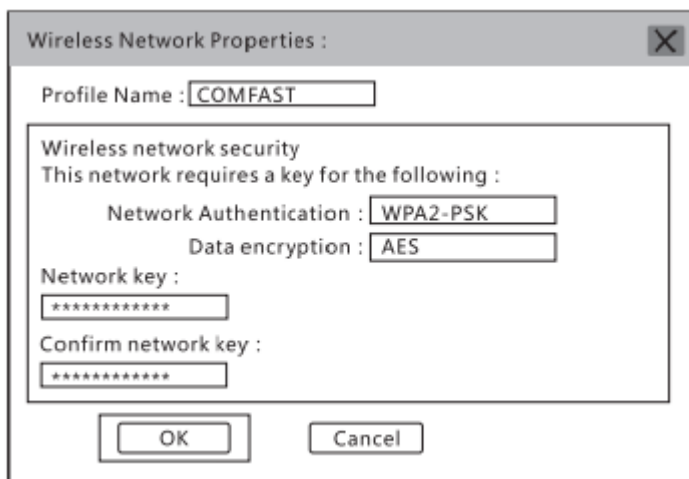
3. After finishing the installation, in the lower right corner of the taskbar [REALTEK Client Management Software] appears, indicating the installation succeed.

### 3. Network Connection Settings

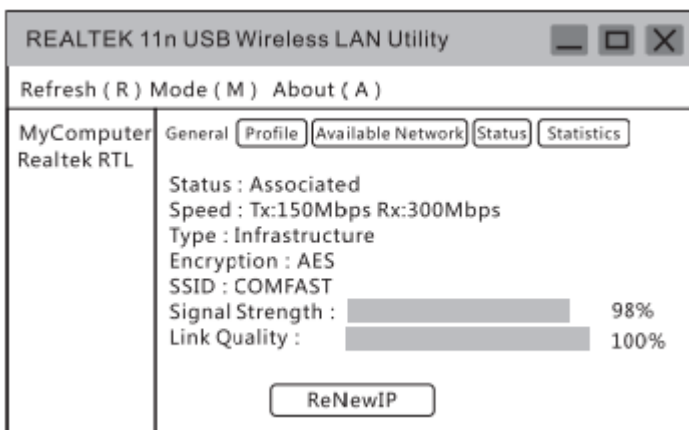
1. Double-click the wireless network card management icon to open the network card client management software.
2. Click on the upper menu "Available Network", select the wireless network SSID you want to connect to and then click "Add to Profile" as shown below.



3. Enter the network key, Confirm the network key and click "OK" as shown below.



4. After the connection is successful, the signal strength and link quality are shown.

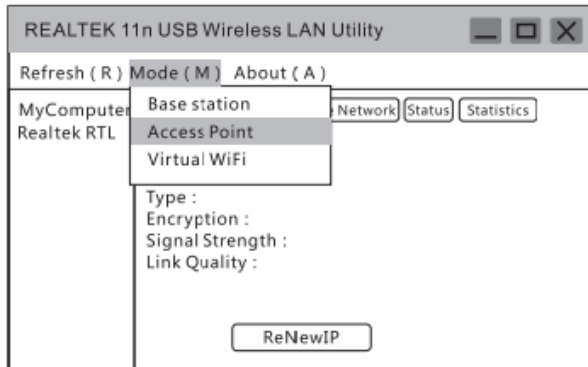


Note: If you do not get the IP address or receive the data packet, it may be the password input error, please re-enter the correct password to regain the IP. For the network with fixed IP address, you need to Set the IP address.

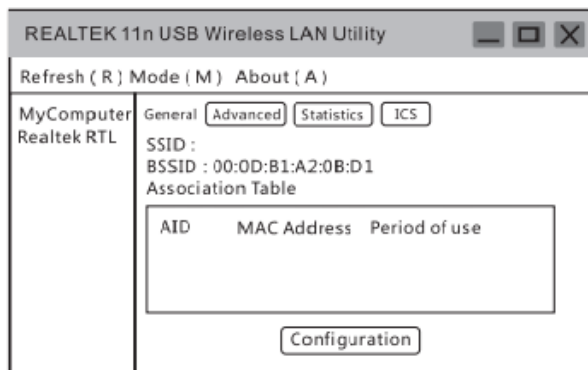
## 4. WiFi Transmitter Settings

Note: Windows 10 system doesn't support this feature.

1. Click on the management software menu [Mode] to select [Access Point] as shown below.

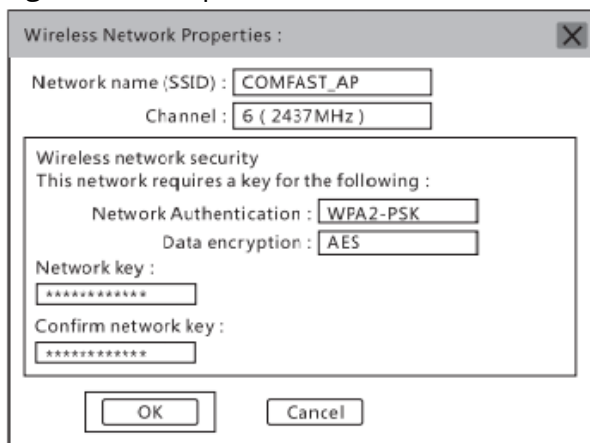


2. After switching to access point is made, the SSID displays the name of the computer as shown below.

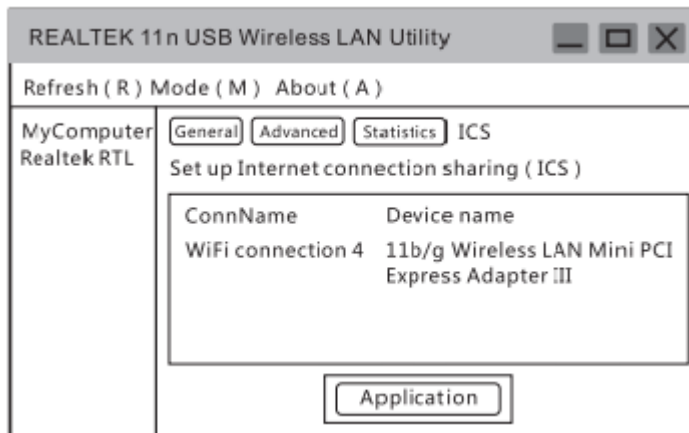


Note: The default of the computer name is WiFiSSID. The default has no password. If you need to use the password and change the SSID, please see the following operations.

3. Click on the image above "Configuration" to open the Wireless Network Properties Settings dialog to set the network name (SSID), channel, encryption algorithm and password. Click "OK".



4. Click "ICS" to select the network connected to your computer, click "Appliacation" as shown below.  
(Windows 7 system interface will be a bit different here, the setting method is the same.)



5. Set it according to your network type and select the network you are using. If the network is bound to IP address and MAC address or is restricted to use by a single computer, it can not share the network.  
If the setting is not successful, please share the network manually (see Setting up a network share manually).

Notes:

- A. Connect to the computer through Modem (cat), use the computer broadband connection to dial, here must choose "broadband connection";
- B. Connect the line from the router or switch to the Internet. Here, select the name of the interface card corresponding to the local connection (usually the default);
- C. If the wireless network card that comes with the notebook is connected to the wireless network, select the name of the interface card of the wireless network card;
- D. If you use the 4G network card to access the internet, select the interface card name of the 4G network card.

## Warranty Conditions

A new product purchased in the Alza.cz sales network is guaranteed for 2 years. If you need repair or other services during the warranty period, contact the product seller directly, you must provide the original proof of purchase with the date of purchase.

**The following are considered to be a conflict with the warranty conditions, for which the claimed claim may not be recognized:**

- Using the product for any purpose other than that for which the product is intended or failing to follow the instructions for maintenance, operation and service of the product.
- Damage to the product by a natural disaster, the intervention of an unauthorized person or mechanically through the fault of the buyer (eg during transport, cleaning by inappropriate means, etc.).
- Natural wear and aging of consumables or components during use (such as batteries, etc.).
- Exposure to adverse external influences, such as sunlight and other radiation or electromagnetic fields, fluid intrusion, object intrusion, mains overvoltage, electrostatic discharge voltage (including lightning), faulty supply or input voltage and inappropriate polarity of this voltage, chemical processes such as used power supplies, etc.
- If anyone has made modifications, modifications, alterations to the design or adaptation to change or extend the functions of the product compared to the purchased design or use of non-original components.



## EU Declaration of Conformity

### Identification data of the manufacturer's / importer's authorized representative:

Importer: Alza.cz a.s.

Registered office: Jankovcova 1522/53, Holešovice, 170 00 Prague 7

IČO: 27082440

### Subject of the declaration:

Title: WiFi USB Adapter

Model / Type: Comfast 811AC

**The above product has been tested in accordance with the standard (s) used to demonstrate compliance with the essential requirements laid down in the Directive (s):**

Directive No. 2014/53/EU

Directive No. 2011/65/EU as amended 2015/863/EU

Prague, 2020/08/27



## WEEE

This product must not be disposed of as normal household waste in accordance with the EU Directive on Waste Electrical and Electronic Equipment (WEEE - 2012/19 / EU). Instead it shall be returned to the place of purchase or handed over to a public collection point for the recyclable waste. By ensuring this product is disposed of correctly, you will help prevent potential negative consequences for the environment and human health, which could otherwise be caused by inappropriate waste handling of this product. Contact your local authority or the nearest collection point for further details. Improper disposal of this type of waste may result in fines in accordance with national regulations.

