



GameSir VX2 AimSwitch

E-sports Combo

User's guide

Importer

Alza.cz a.s.

Jankovcova 1522/53

Holešovice 170 00 Prague 7

www.alza.cz

Dear customer,

Thank you for purchasing our product. Please read the following instructions carefully before using for the first time and keep this user manual for future reference. Pay particular attention to the safety instructions. If you have any questions or comments about the device, please contact the customer line. Customer line, available 24 hours a day: +44 (0)203 514 4411, www.alza.co.uk.

PACKAGE CONTENTS

VX2 Gaming Mechanical Keypad

GM400 Gaming Mouse

VX Receiver

USB Type-C Cable (length: 1m)

User Manual

Certificate

SYSTEM REQUIREMENTS

Windows 7/8/10

PS4/PS4 Slim/PS4 Pro

Xbox One/Xbox One S/Xbox One X

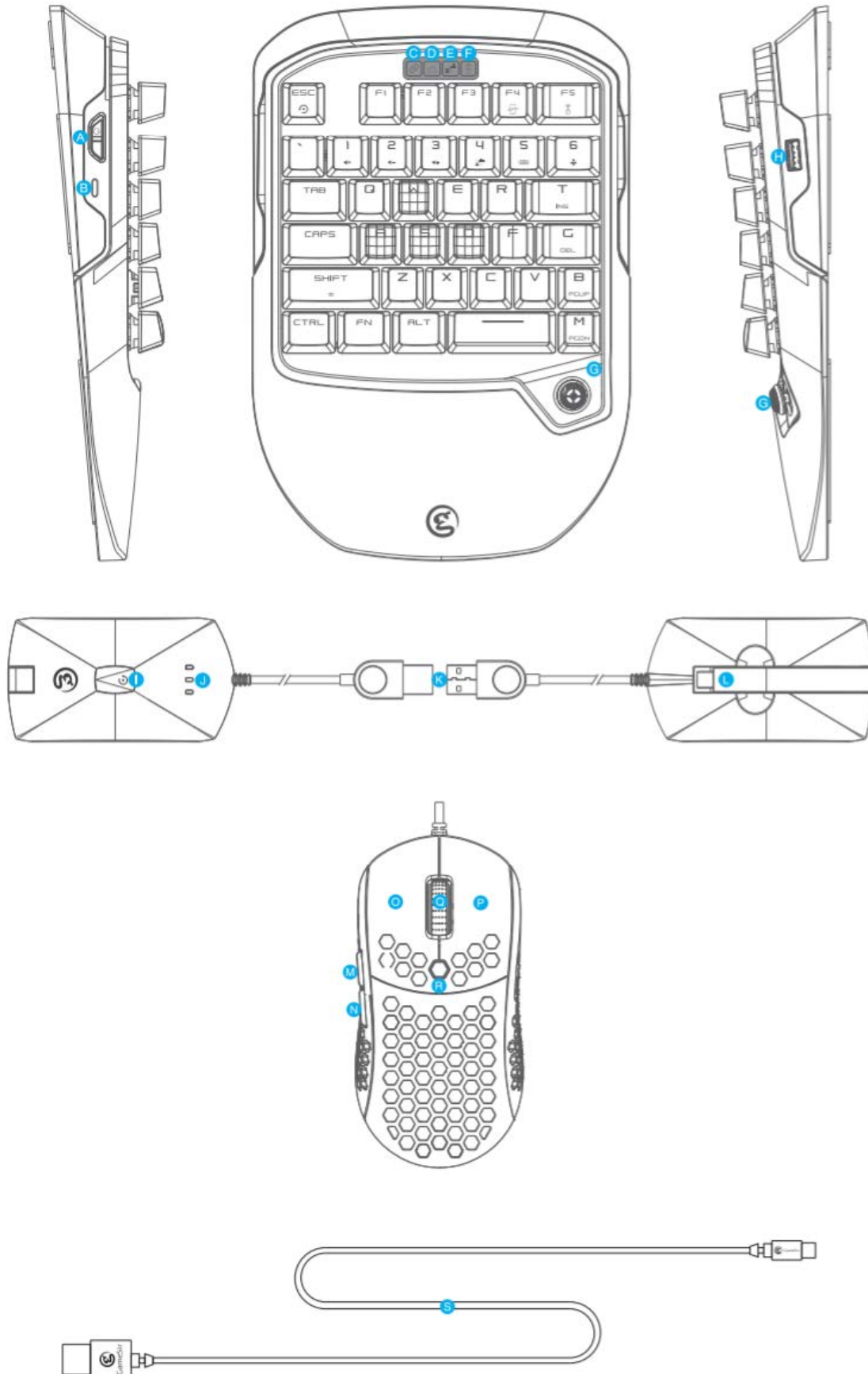
Nintendo Switch

Nintendo Switch Lite

REGISTRATION

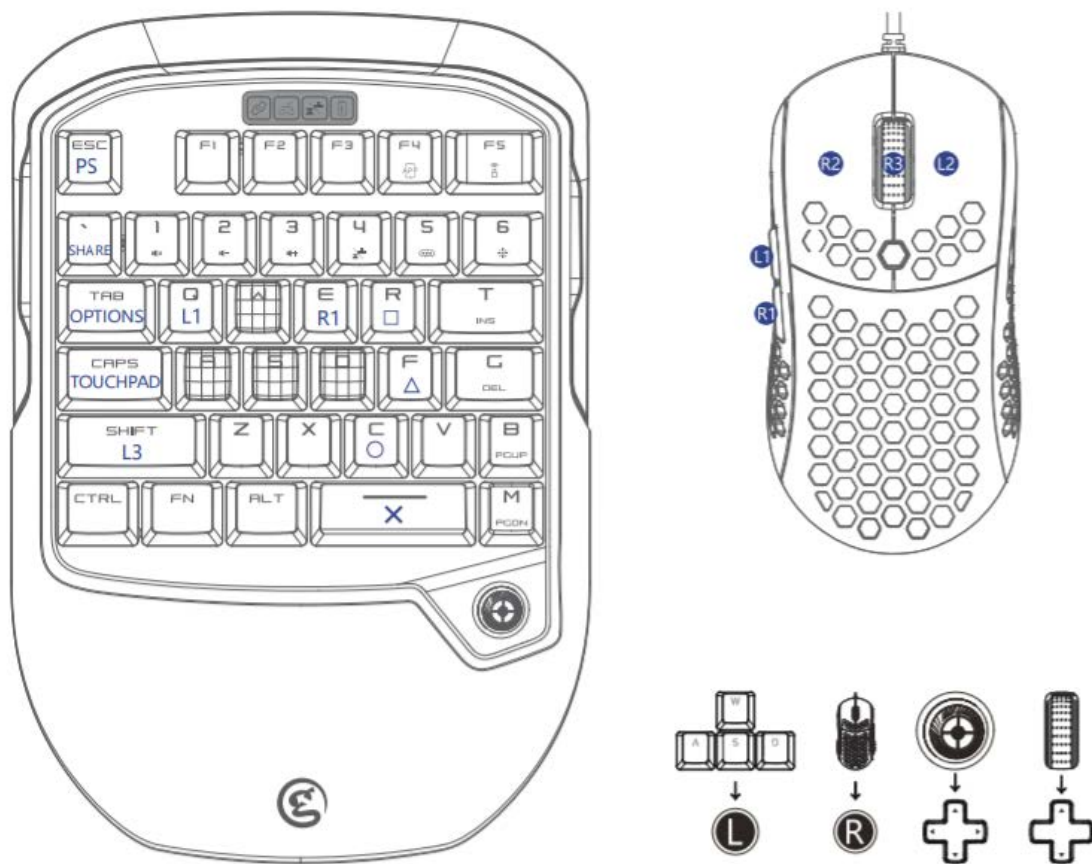
Register your GameSir ID online at <https://gamesir.hk/> to get real-time information on your product's warranty status and a series of exclusive benefits from GameSir.

DEVICE LAYOUT



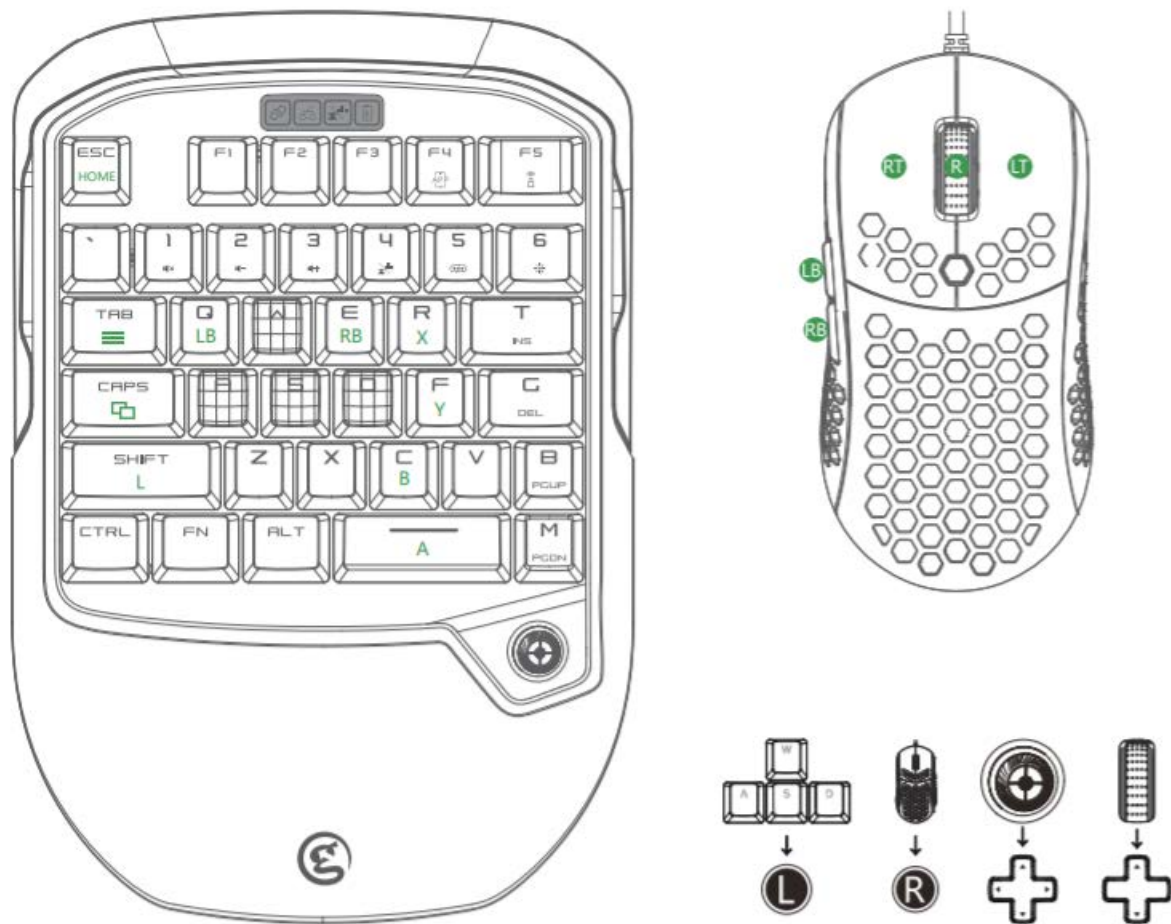
- A. Power switch ,
- B. Type-C port
- C. Connection status indicator
- D. Connection mode indicator
- E. Joystick mode indicator
- F. Battery indicator
- G. Joystick
- H. USB port (only for mouse)
- I. Reset
- J. Receiver indicator
- K. VX receiver
- L. Micro-USB cable
- M. Forward
- N. Back
- O. Left button
- P. Right button
- Q. Middle button & Roller
- R. DPI button
- S. Type-C cable

CONNECTION



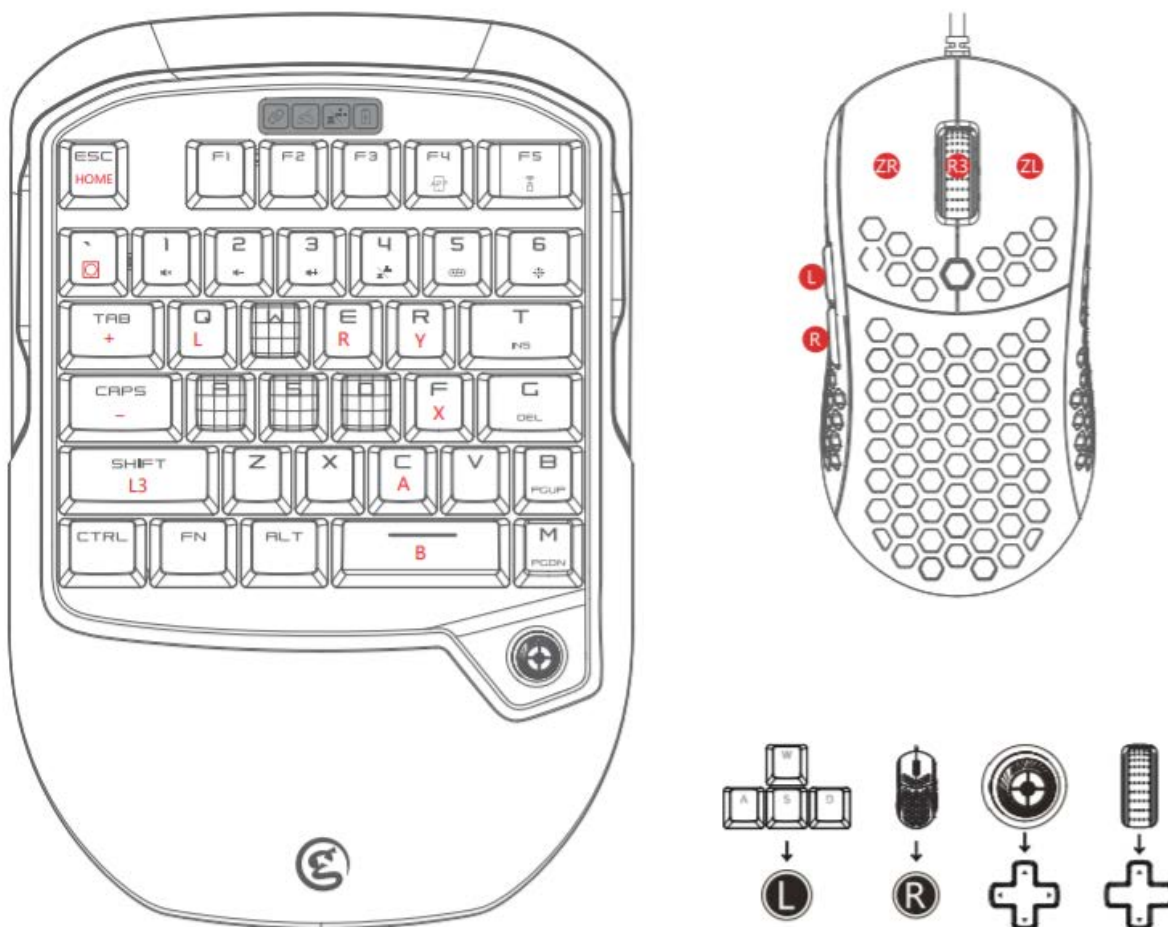
Connect to PS4

- Plug the USB cable of GM400 mouse into the USB port (only for mouse) of VX2.
- Switch on GameSir VX2, the connection status indicator will flash in green, meaning GameSir VX2 is ready to be connected.
- Plug the receiver into the USB port of PS4, the receiver indicator will flash in blue, meaning PS4 is ready to be connected. When the connection status indicator and the receiver indicator stay on, the connection is completed.
- Plug the official controller having connected to PS4 into the USB port of the receiver via USB cable, and wait for the controller to be identified. When the connection mode indicator stays blue, the identification is completed.
- When the powered-on controller is to connect, PS4 will enter User Select automatically; select the related user and confirm to complete the connection. In default, use "A" and "D" keys to select, "Space" (X as confirm in the case) and "C" (○ as confirm in the case) keys to confirm. When the powered-off controller is to connect, GameSir VX2 is ready to use.



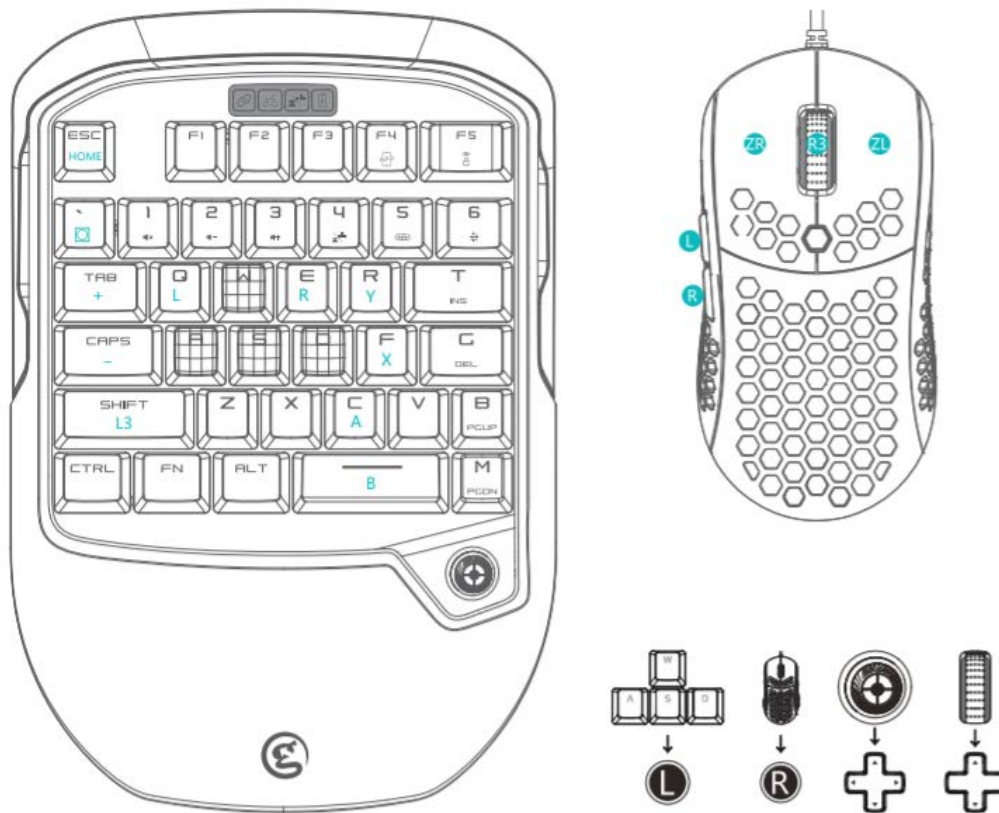
Connect to Xbox One/Xbox One S/Xbox One X

- Plug the USB cable of GM400 mouse into the USB port (only for mouse) of VX2.
- Switch on GameSir VX2, the connection status indicator will flash in green, meaning GameSir VX2 is ready to be connected.
- Plug the receiver into the USB port of Xbox, the receiver indicator will flash in blue, meaning PS4 is ready to be connected. When the connection status indicator and the receiver indicator stay on, the connection is completed.
- Plug the official controller having connected to Xbox into the USB port of the receiver via USB cable, and wait for the controller to be identified. When the connection mode indicator stays green, the identification is completed.
- Connection completed. GameSir VX2 is ready to use.



Connect to Nintendo Switch

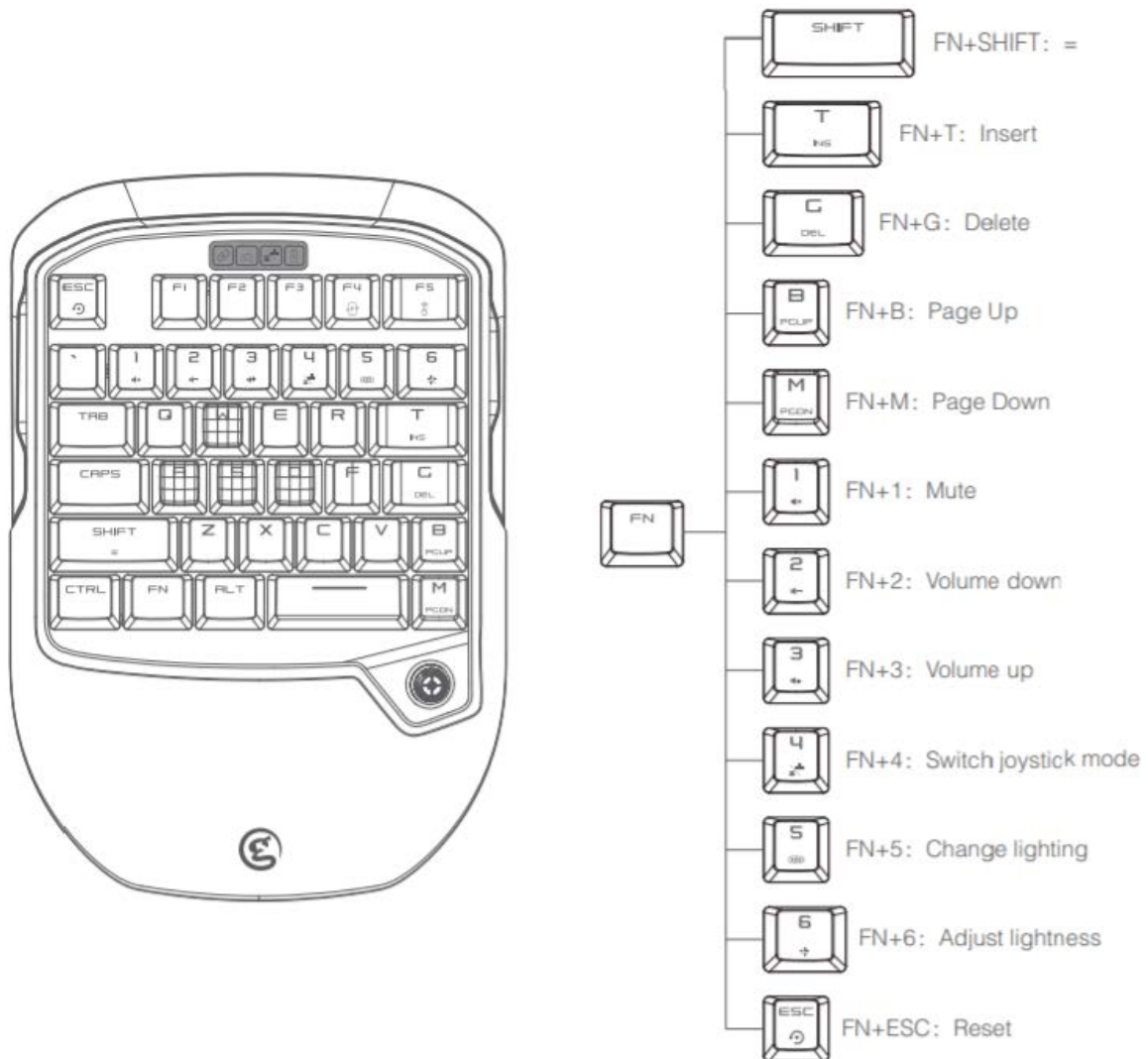
- a. Open System Setting, then follow the steps: Controllers and Sensors>Pro Controller Wired Communication, and turn it on.
- b. Plug the USB cable of GM400 mouse into the USB port (only for mouse) of VX2.
- c. Switch on GameSir VX2, the connection status indicator flashes in green, meaning GameSir VX2 is ready to be connected.
- d. Plug the receiver into the USB port of Switch dock, and the receiver indicator flashes in blue, ready to be connected. When the connection status indicator and the receiver indicator stay on, the connection is completed. When the connection mode indicator stays red, the identification is completed.
- e. Connection completed. GameSir VX2 can work via Switch. Note: If you cannot play games, but can operate the main menu, you need to follow these steps: System Setting> Controllers>Change Grip/Order, follow the on-screen prompts, and restart games.



Connect to Nintendo Switch

- Open Switch Lite System Setting, then follow the steps: Controllers and Sensors>Pro Controller Wired Communication, and turn it on.
- Connect Switch Lite to a Type-C to USB adapter that supports Switch system. (the Type-C to USB adapter needs to be purchased by yourself)
- Plug the USB cable of GM400 mouse into the USB port (only for mouse) of VX2.
- Switch on GameSir VX2, the connection status indicator flashes in green, meaning GameSir VX2 is ready to be connected.
- Plug the receiver into the USB port of the Type-C to USB adapter, and the receiver indicator light flashes blue and they are pairing. When the connection status indicator light and the receiver indicator light stay on, the connection is successful. When the connection indicator light turns red and is on, the identification is successful.
- Connection completed. GameSir VX2 can work via Switch Lite.

Note: If you cannot play games, but can operate the main menu, you need to follow these steps: System Setting> Controllers>Change Grip/Order, follow the on-screen prompts, and restart games.



Joystick Mode

The joystick functions as D-pad in default. Press FN+4 keys, the joystick mode indicator lights up , so the joystick mode is switched to WASD function. Press FN+4 keys again, the joystick mode indicator is off, and the joystick function and WASD function are back to the default.

Wireless Connection to Windows Pc

- a. Switch on VX2 keypad, the connection status indicator flashes green and the VX2 keypad is ready to be connected.
- b. Plug the USB cable of GM400 mouse into the USB port of Windows PC.
- c. Plug the receiver into the USB port of Windows PC. When the connection status indicator and the receiver indicator stay on, the connection is completed.
- d. The computer automatically installs the driver. After the driver is successfully installed, the VX2 is ready to work.

Wired Connection To Windows Pc

- a. Connect the VX2 keypad to the PC via USB cable.
- b. Plug the USB cable of GM400 mouse into the USB port of Windows PC.
- c. The computer automatically installs the driver.
- d. The driver is successfully installed and the VX2 is ready to work.

GameSir GM400 E-SPORTS GAMING MOUSE DPI ADJUSTMENT

The default DPI level of the GameSir GM400 E-sports gaming mouse is 1600. Press the DPI button on the back to switch 7 levels of DPI (400/800/1600/2400/3200/6400/12000). The GM400 mouse backlight will flash when DPI is switched.

- Green : 400DPI
- Red : 800DPI
- Blue : 1600DPI
- Yellow : 2400DPI
- Orange : 3200DPI
- Purple : 6400DPI
- White : 12000DPI

GameSir GM400 E-SPORTS GAMEING MOUSE POLLING RATE ADJUSTMENT

The default polling rate of GameSir GM300 is 1000Hz. Press the back button + DPI button to switch 4 levels of polling rate (125hz/250hz/500hz/1000hz). The backlight will flash when polling rate is switched.

- Flash once: 125Hz
- Flash twice: 250Hz
- Flash three times: 500Hz
- Flash four times: 1000Hz

GameSir GM400 E-SPORTS GAMING MOUSE LIGHT EFFECT ADJUSTMENT

Press the GM400 mouse Forward button + DPI button to change the lighting effect.

AUTOMATIC SLEEPING MODE

When the VX2 is connected, if there is no operation within 600 seconds, the device will automatically sleep. When the VX2 is not connected, if there is no operation within 120 seconds, the device will automatically sleep. Press any key to wake up.

POWER INDICATOR INSTRUCTION

When the VX2 is connected, the power indicator stays in blue.

When the VX2 is charging, the power indicator flashes in green.

When the VX2 is in low power condition (15% and below), the power indicator stays in red.

When the VX2 is in low power condition (5 % and below), it will automatically power off.

Charging time: 2~3 hours.

Recommended adapter: 5 V/1 A.

CONNECT GAMESIR-VX2 TO G-Crux APP

With the G-Crux APP, you can customize the GameSir VX2 buttons, adjust sensitivity and achieve abundant configurations.

- a. Switch on GameSir VX2. The connection status indicator flashes in green, GameSir VX2 is ready to be connected.
- b. Press FN+F4 keys of GameSir VX2 at the same time. The connection status indicator flashes in blue, GameSir VX2 can be connected to the mobile phone.
- c. Turn on Bluetooth on your mobile phone, search GameSir VX2 to pair. The connection status indicator stays blue when it's connected successfully.
- d. Open the G-Crux to customize the button configurations.

NOTICE

- Please read this Precautions carefully.
- CONTAINS SMALL PARTS. Keep out of reach of children under the age of 3. Seek immediate medical attention if swallowed or inhaled.
- DO NOT use the product near fire.
- DO NOT expose to direct sunlight or high temperatures.
- DO NOT leave the product in a humid or dusty environment.
- DO NOT impact the product or cause it to fall due to strong impact.
- DO NOT touch USB port directly or it might cause malfunctions.
- DO NOT strongly bend or pull cable parts.
- Use a soft, dry cloth while cleaning.
- DO NOT use chemicals such as gasoline or thinner.
- DO NOT disassemble, repair or modify.
- DO NOT use for purposes other than its original purpose.
- We are NOT responsible for accidents or damage when used for non-original purposes.
- DO NOT look directly at the optical light. It might damage your eyes.
- If you have any quality concerns or suggestions, please contact GameSir or your local distributor.

Warranty Conditions

A new product purchased in the Alza.cz sales network is guaranteed for 2 years. If you need repair or other services during the warranty period, contact the product seller directly, you must provide the original proof of purchase with the date of purchase.

The following are considered to be a conflict with the warranty conditions, for which the claimed claim may not be recognized:

- Using the product for any purpose other than that for which the product is intended or failing to follow the instructions for maintenance, operation and service of the product.
- Damage to the product by a natural disaster, the intervention of an unauthorized person or mechanically through the fault of the buyer (e.g. during transport, cleaning by inappropriate means, etc.).
- Natural wear and aging of consumables or components during use (such as batteries, etc.).
- Exposure to adverse external influences, such as sunlight and other radiation or electromagnetic fields, fluid intrusion, object intrusion, mains overvoltage, electrostatic discharge voltage (including lightning), faulty supply or input voltage and inappropriate polarity of this voltage, chemical processes such as used power supplies, etc.
- If anyone has made modifications, modifications, alterations to the design or adaptation to change or extend the functions of the product compared to the purchased design or use of non-original components.

This product has been tested in accordance with the standards used to demonstrate compliance with the essential requirements set out in the relevant directives. You can find the declaration of conformity on the alza.cz website.



WEEE

This product must not be disposed of as normal household waste in accordance with the EU Directive on Waste Electrical and Electronic Equipment (WEEE - 2012/19 / EU). Instead it shall be returned to the place of purchase or handed over to a public collection point for the recyclable waste. By ensuring this product is disposed of correctly, you will help prevent potential negative consequences for the environment and human health, which could otherwise be caused by inappropriate waste handling of this product. Contact your local authority or the nearest collection point for further details. Improper disposal of this type of waste may result in fines in accordance with national regulations.

