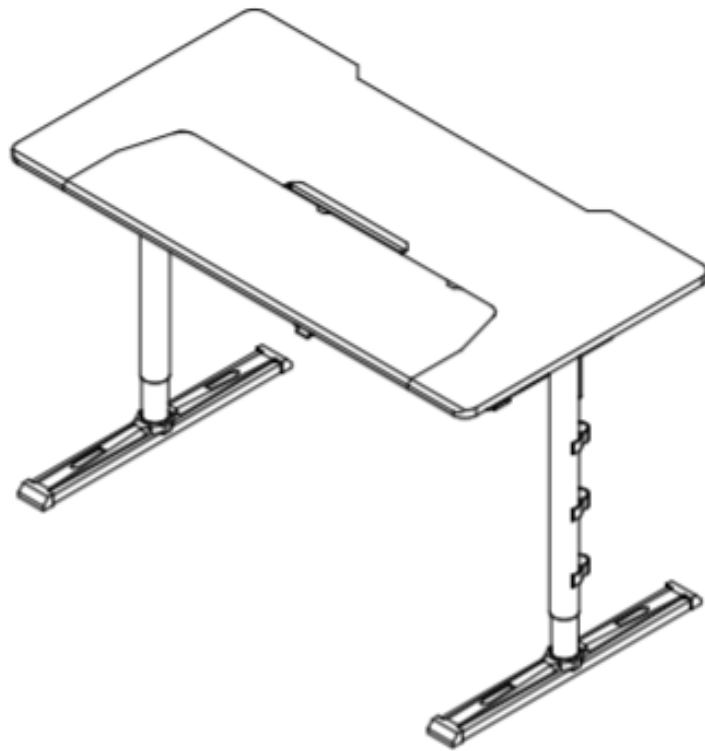




SADES[®]
GROWING TOGETHER WITH GAMERS

SADES ALPHA

USER MANUAL

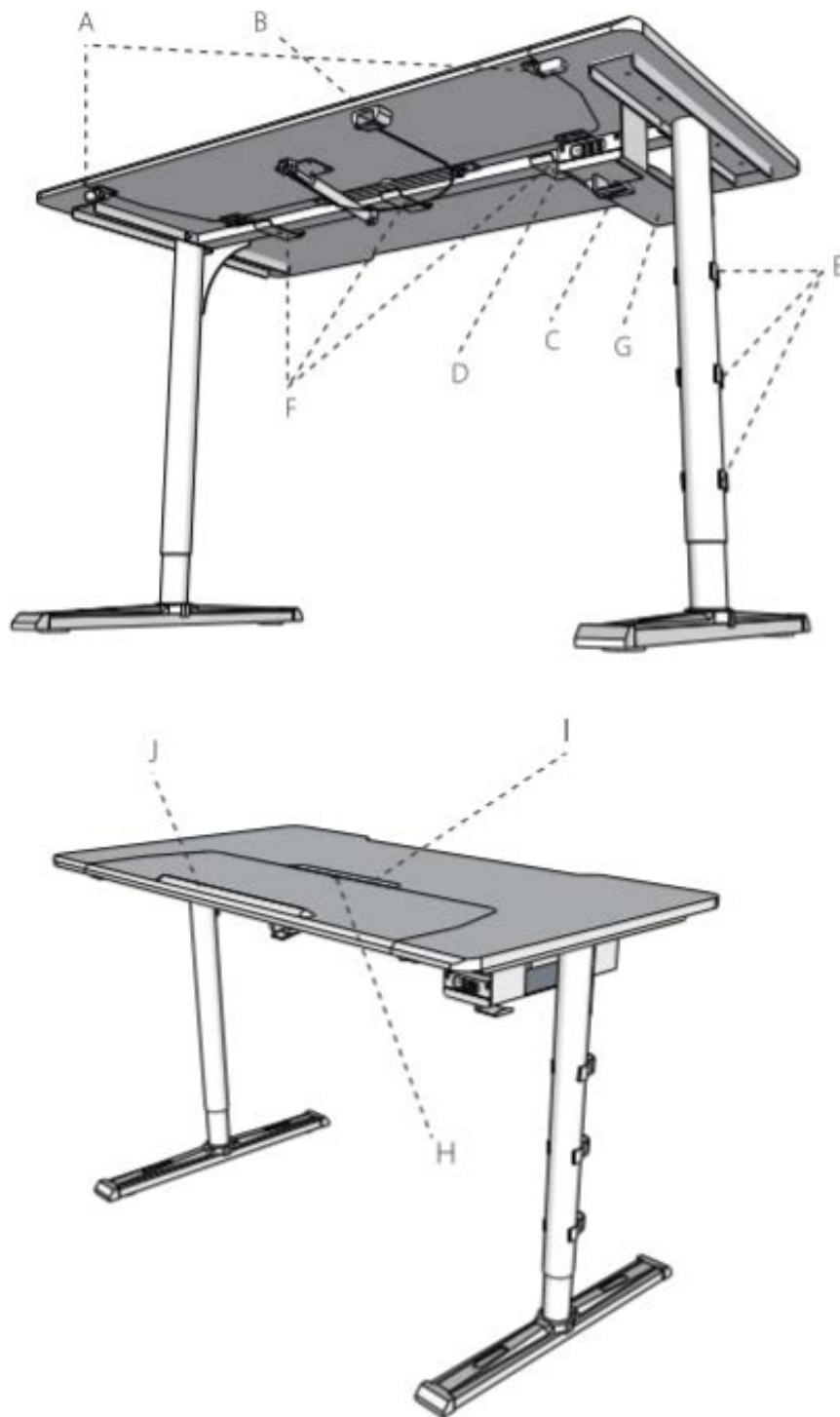


The product user guide contains product features, uses and operating procedures. Read the user manual carefully to get the best experience and avoid unnecessary damage. Keep this manual for future reference. Strictly comply with applicable laws and regulations at the place of use.

Importer: Alza.cz a.s., Jankovcova 1522/53, 170 00 Prague 7, www.alza.cz

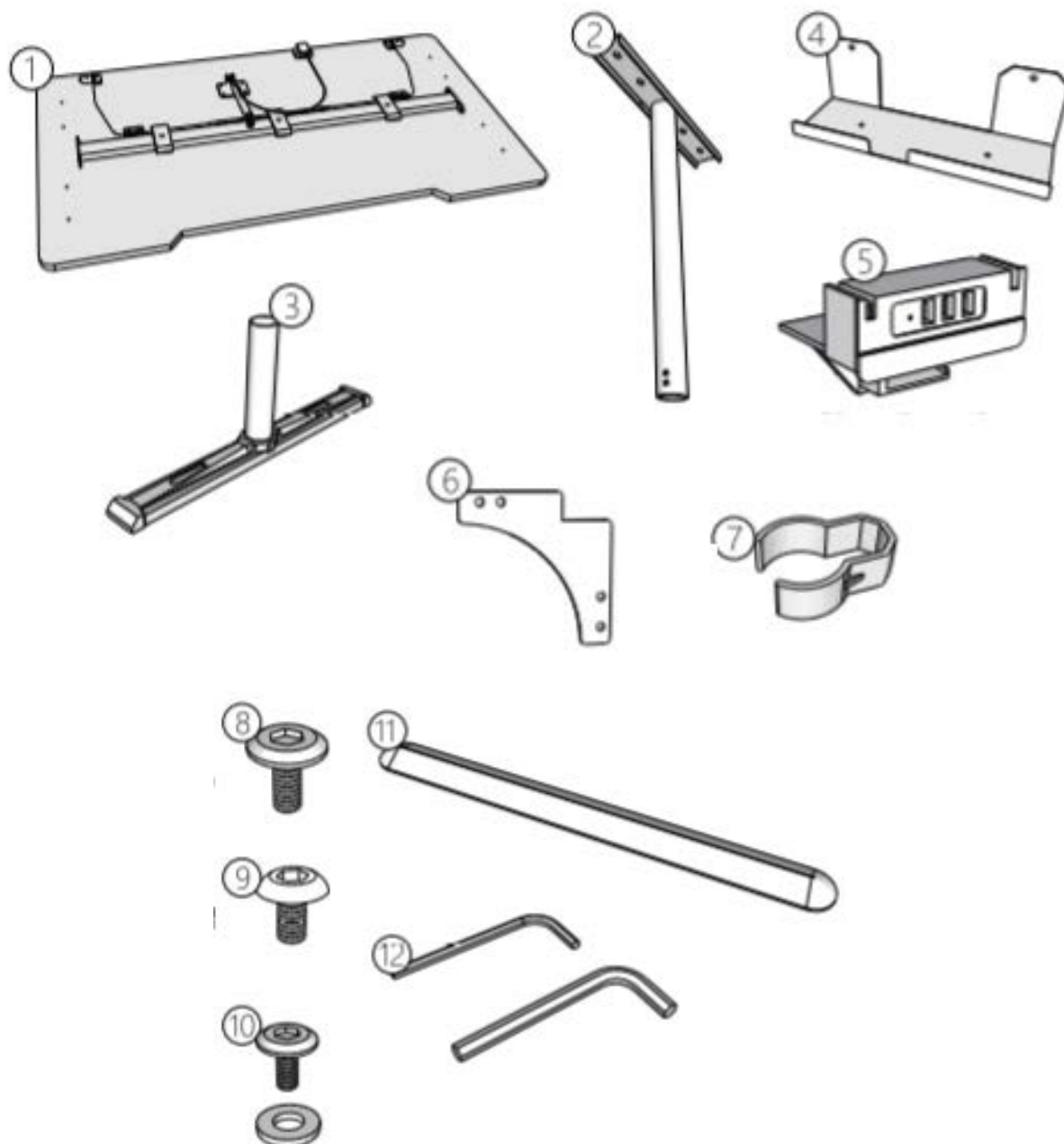
Thank you for purchasing the SADES Alpha. Please read the provided instructions carefully before assembling your device, and strictly follow the manual in regards to the device's operation and use.

Product Functions



- A. Keyboard Tray Fixing Lock
- B. Sloping Keyboard Tray Switch
- C. Headset Hook
- D. USB Hub
- E. Cable Clamp

- F. Cable Hook
- G. Metallic Panel – Power strip here if available
- H. Wire Routing Opening
- I. Holder Slot
- J. Anti-slide Strip

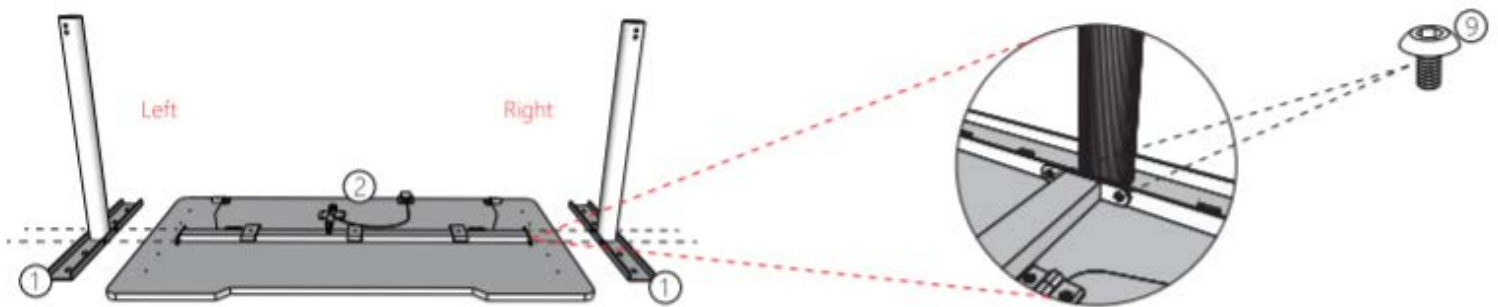


1. Desktop (pre-installed) × 1	2. Table Legs (left and right) × 1
3. Footing × 2	4. Metallic Panel × 1
5. USB Hub and Headphone Hook × 1	6. Stator × 2
7. Cable Clip × 3	8. M8 Wide Head Screw × 4
9. M6 Cup Head Screw × 15	10. M6 Wide Head Screw × 9
11. Anti-Slide Strip × 1	12. Hex Key Wrench × 2

Please strictly follow all the installation steps. Accessories should be installed properly before locking them in place with the related screws. Left and Right signs correspond to your left and right side when you sit in front of the table.

Assembly Guide

STEP 1: Place the desktop upside down on the ground. Connect the left and right legs to the crossbeams using two M6 cup head screws on each side.



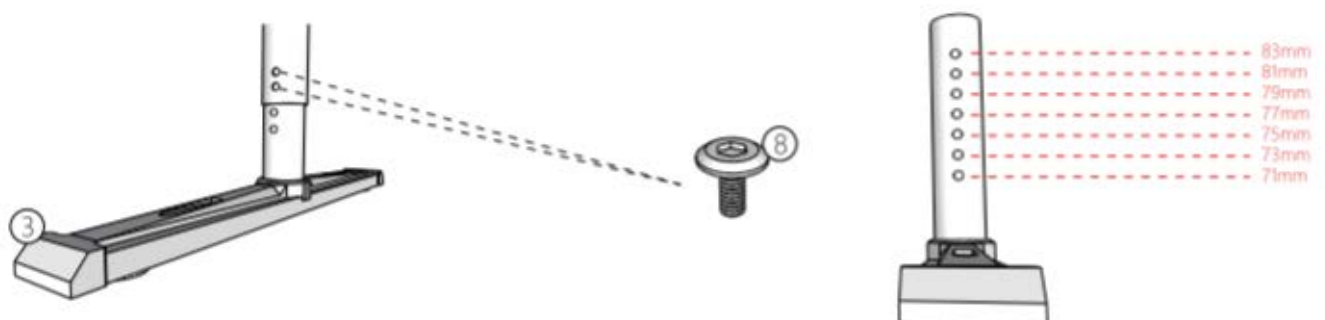
STEP 2: Install the metallic stator on the table legs and the crossbeam using four M6 cup head screws on each side.



STEP 3: Fix the table legs onto the desktop using four M6 wide head cap screws on each side.



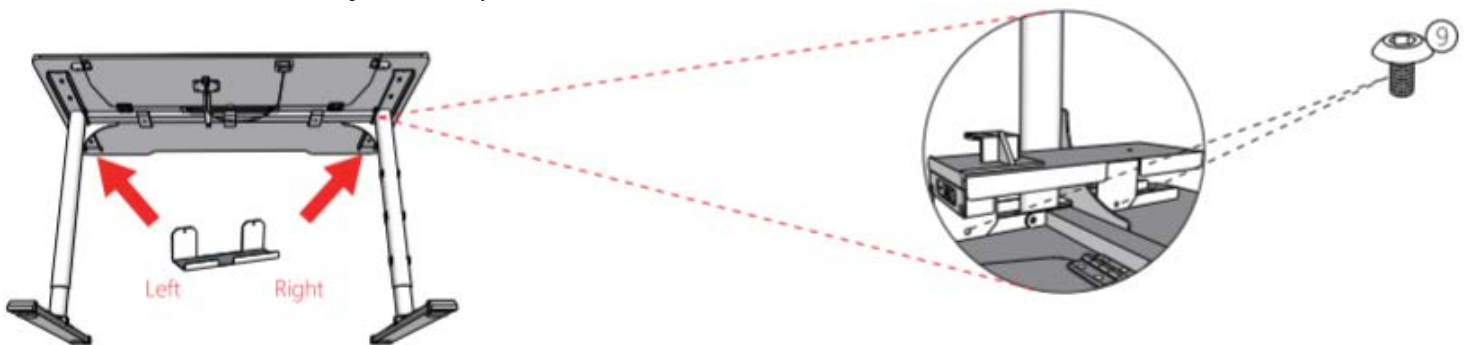
STEP 4: (Pre-installed) Insert the footing into the table leg, after which fix the footing to the required height using two M8 wide head screws on each side (there are 7 height options in total).



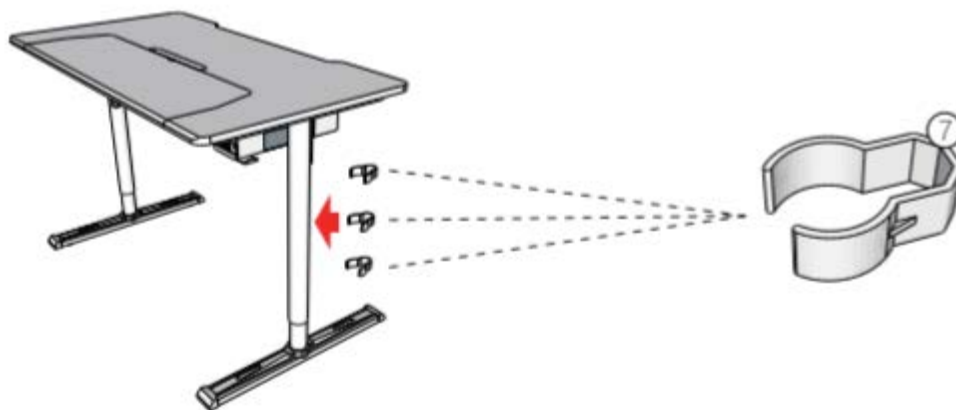
STEP 5: Install the USB Hub and Headset Hook on the metallic panel and fix it in place using one M6 wide head screw (choose your desired direction).



STEP 6: Fix the metallic panel onto the table legs using two M6 cup head screws. Choose the same side as your computer.



STEP 7: Lock all the fixing screws in place, turn the table over, and nip the 3 cable management clips to complete the installation. Choose your desired direction



Warranty Conditions

A new product purchased in the Alza.cz sales network is under warranty for 2 years. If you need repair or other services during the warranty period, contact the product seller directly, you must provide the original proof of purchase with the original date of purchase. Copies of proof of purchase of the product, altered, supplemented, without the original data or otherwise damaged proof of purchase of the product will not be considered as proof of purchase of the claimed product.

The following are considered to be a conflict with the warranty conditions, for which the claimed claim may not be recognized:

- Use of the product for a purpose other than that for which the product is intended or failure to follow the instructions for maintenance, operation and service of the product.
- Damage to the product due to a natural disaster, the intervention of an unauthorized person or mechanically through the fault of the buyer (eg during transport, cleaning by inappropriate means, etc.).
- Natural wear and aging of consumables or components during use (such as batteries, etc.).
- Exposure to adverse external influences, such as sunlight and other radiation or electromagnetic fields, fluid intrusion, object intrusion, mains overvoltage, electrostatic discharge voltage (including lightning), faulty supply or input voltage and inappropriate polarity of this voltage, chemical processes, for example used power supplies, etc.
- If modifications, alterations, design changes, or alterations have been made to anyone to change or extend the product's features over the purchase or use of non-genuine components.

Alza.cz declares that this product meets all the necessary requirements of the relevant EU directives.



All electrical and electronic accessories should not be disposed of with normal household waste, but must be handed over to the applicable collection point for the recycling of waste.



All rights reserved. ©2020 Alza.cz a.s.