



AMAZFIT Nexo
User Manual

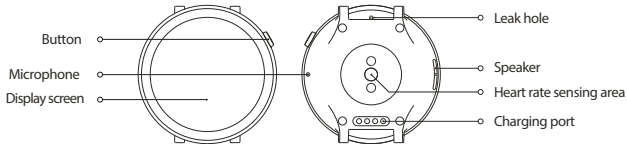
01 Package Contents

Watch (including the strap) × 1

USB charging cable and base × 1

User Manual × 1

02 About the watch



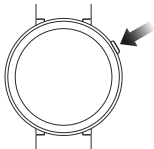
03 Install the App

Scan the QR code below with your mobile phone, or search for the "Amazfit" app in major application markets and have it installed.



04 Turn On/Off

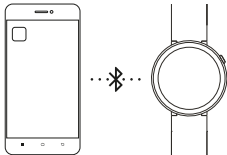
1. Press and hold the button on the right of the watch, and the watch screen will light up to display the startup animation.
2. A QR code will be displayed on your watch screen when it first turns on. This QR code will be used to pair your watch with your mobile phone.
3. To turn off your watch, press and hold the same button for more than five seconds to display the shutdown interface.



05 Connect Your Watch

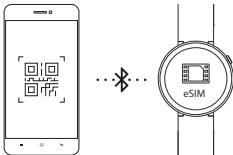
Activate Bluetooth and open the “Amazfit” app on your mobile phone. Log in to your account, and follow the prompts to scan the QR code displayed to bind the watch.

Note: Do not pair the watch directly using your mobile phone’s Bluetooth. Follow the steps in the app to pair your watch correctly.



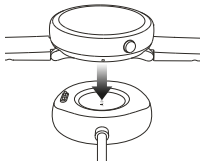
06 eSIM Activation

1. Contact your local carrier to get a QR code.
2. Use the "Amazfit" app on your mobile phone to scan the QR code, following the instructions on the app to activate the eSIM.



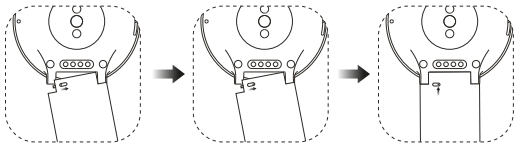
07 Charging Your Watch

All AMAZFIT Nexo watches are shipped with the battery charged. As shown in the illustrations, align the watch with the charging base, align the charging interface of the watch with the metal contacts of the charging base, and then insert the USB interface of the charging base into the charger or the USB port of a computer. Dry the contacts before charging to avoid poor contact resulting from sweat or other dirt.

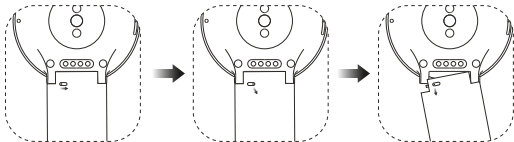


08 Disassembly and Assembly of the Watch Strap

1. Please refer to the illustrations to assemble the watch strap.



2. Please refer to the illustrations to disassemble the watch strap.



09 Safety Notice

1. The watch has a dust and water resistant rating of IP68. If the device falls on the ground or is hit, its dust and water resistant capacity may be damaged.
2. Do not wear the watch during swimming or bath. If it is exposed to water, do not turn it on or recharge, you need to dry it with soft cloth. Do not expose the watch and its accessories to liquids or place them in a humid environment.
3. The watch is not resistant to erosive liquids such as acidic and alkaline solutions and chemical reagents.
4. Do not use the watch in a high temperature environment or near open fires.
5. Do not use the watch in a thunderstorm to avoid lightning stroke or other injuries.

-
6. Do not disassemble the watch and its accessories at will. If your watch needs any repair, please go to a designated professional organization for help.
 7. The product supports official system upgrades. If you modify the system files by installing a third-party ROM system or other cracking methods, it may lead to malfunction or data damage or loss of the product. These risky operations are in violation of the "Three Guarantees Service Agreement" and they could void your warranty.
 8. When you are entering a flammable or explosive area (such as a gas station) or its surroundings, please turn off the watch's communication function and follow all safety signs and instructions there. It may generate a slight spark or electric wave when you use the watch in such places, which may cause an explosion or a fire.

10 Basic Parameters

Product model: AC1817

WLAN: 2.4 GHz 802.11 b/g/n

Battery type: Polymer li-ion rechargeable battery

Battery capacity: 420 mAh (typical)

Frequency:

FDD-LTE: 824~849 MHz, 832~862 MHz, 880~915 MHz,
1710~1785 MHz, 1920~1980 MHz, 2500~2570 MHz

TD-LTE: 2300~2400 MHz

WCDMA: 880~915 MHz, 1920~1980MHz

GSM: 880~915 MHz, 1710~1785 MHz

BT: 2402~2480 MHz

Resolution: 454 × 454

Display screen: 1.39-inch AMOLED

Bluetooth: 2.4 GHz Bluetooth V4.2/BLE

GPS: GPS/Glonass/Galileo

Input: 5 V  700 mA MAX

Operating temperature: 0°C to 40°C

Max. output: 34 dBm

SAR value: <1.18 W/kg@10 g (body 0 mm)

Device requirements: Devices installed with
Android 5.0 or iOS 10.0 and systems of the
above versions.

11 Disposal and Recycling Information



The use of the WEEE Symbol indicates that the following product may not be treated as a household waste. By ensuring that this product is disposed correctly, you will help protect the environment. For a more detailed information about the recycling of the following product, please contact your local authority, your household waste disposal service provider, or the shop where you have purchased the product.

12 Certifications and Safety Approvals



Hereby, Anhui Huami Information Technology Co., Ltd., declares that the radio equipment type A1817 is in compliance with Directive 2014/53/EU. The full text of the EU declaration of conformity is available at the following internet address: <http://en.amazfit.com/support.html>
For more regulatory information and product certification/compliance logos related to AMAZFIT Nexo, please go to Regulatory on your AMAZFIT Nexo.

13 Warranty and Return Policy

The Amazfit Limited Warranty covers Amazfit products against manufacturing defects beginning on the original purchase date. The warranty period is 12 months or other period as the applicable consumer laws in the consumer's country of purchase require. Our warranty is in addition to rights provided by applicable consumer laws.

Official website: en.amazfit.com

Help: support.amazfit.com

Email us at: support@amazfit.com

Importer:

Beryko s.r.o.

Na Roudné 1162/76, 301 00 Plzeň

www.beryko.cz