

### 3.Changing the cutting head

When the blades in the cutting head are damaged or worn, the cutting head must be replaced.

Note: Only the entire cutting head can be replaced.

3.1 Remove the end cap of the guide rail from the base plate by pushing it upwards at the lower end at the same time as pushing it inwards gently.

3.2 Replace the old cutting head with a new one.

3.3 Slide the guide rail back in the device in the base plate and install the new cutting head in the process

3.4 Place the end cap from above on to the opening at the end of the guide rail.



# Aveli

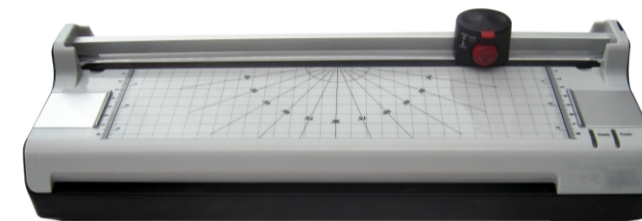
## Aveli COMBI A4

- ✓ Laminator
- ✓ Trimmer (3 types)
- ✓ Corner rounder

### Technical Data

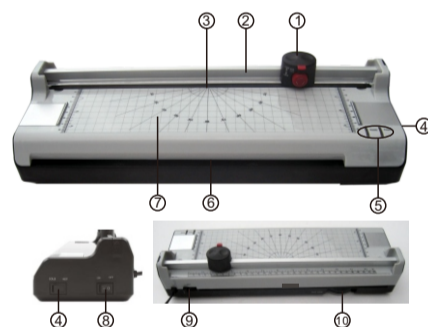
<b>Hot and cold laminator</b>	<b>Aveli COMBI A4</b>
Maximum laminating width:	230 mm
For lamination foil thicknesses:	80mic-125mic
Laminating speed:	250 mm per minute
Warm-up phase:	3-5 minutes
Indicator elements:	LED POWER (red) LED READY (green)
Special features:	ABS switch (for clearing jams) Automatic shutdown on overheating
<b>Trimmer</b>	
Special features:	Reel trimmers with 3 selectable types of cut and setting lock Visual positioning aids in cm (lines, angles, scale)
Selectable types of cut:	Straight cut Wave cut Perforation cut
Maximum size:	A4
Maximum cutting capacity:	Straight cut: 3 sheets of paper, (80 g/m <sup>2</sup> ) Wave cut: 3 sheets of paper (80 g/m <sup>2</sup> ) Perforation: 3 sheets of paper (80 g/m <sup>2</sup> )
Dimensions (W x D x H):	385 x 135 x 100 mm
Weight:	1,3 kg
Power supply:	220-240V 50Hz
Rated input power:	Max. 265 W, 1,1 A

### Operating Instructions



### Operating Elements

- 1.Cutting head
- 2.Guide rail
- 3.Pressing rail with finger protection
- 4.Function switch(temperature control)
- 5.Indicator elements(LEDs)
- 6.Laminator infeed
- 7.Visual positioning aids in cm(lines,angles,scale)
- 8.ON/OFF switch
- 9.Anti-blocking slider(for clearing jams)
- 10.Corner rounder(The function for rounding off the corners is located on the reverse side of the devices.)



### Operation

#### Laminator

The laminator can complete hot and cold lamination:

In the case of hot lamination, the lamination foil is adhered together.

In the case of cold lamination, the lamination foil is pressed together.

Select the lamination method according to the material to be laminated.

Note: Only cold lamination should be used for thermopaper and ultrasonic images!

#### 1.Hot laminating

1.1 Connect the power cable to an easily accessible, standard electrical socket.

Caution: Check that the voltage specifications of the unit correspond to that of your power supply network ( 220-240V, 50Hz).

1.2 Use the on/off switch on the right of the appliance to switch on:"HOT", the red display lamp shows.

1.3 The drive motor for the transport rollers starts up. The correct operating temperature is reached after about 3-5 minutes and the green display lamp shows.

1.4 Insert the document to be laminated in the pouches so that there is a margin of approx. 3 - 5 mm to the edge of the foil on all sides.

Caution: Only use foil intended for hot laminating.

1.5 Insert the foil containing the document in the laminator's insertion slot. Insert the ready closed side of the pouch first.

Note: To prevent the laminating foil from creasing, never insert the open end of the foil pocket in the insertion slot of the laminator first. The laminating process occurs automatically.

Caution: The lamination foil is very hot and soft when ejected following lamination. Therefore, handle the laminated document with due care!

Note: To flatten and smoothen the laminated product, place a book or similar heavy, flat object on it.

1.6 When you have completed the laminating process, turn the function switch to the right in COLD position and remove the power plug from the power socket. Let the device cool down before packing it away, for example.

Caution: The device is very hot directly after laminating! Risk of injury!

#### 2. Cold laminating

Attention: If you have just finished using the laminator for hot laminating, you must let the laminator cool down. It takes about 30 minutes to cool down sufficiently.

2.1 Turn the function switch to the right in the COLD position.

Note: Only use cold lamination foil for cold laminating.

2.2 Remove the protective foil from the lamination foil.

2.3 Insert the document to be laminated in the lamination foil so that there is a margin of approx. 3 - 5 mm to the edge of the foil on all sides.

2.4 Guide the laminating foil containing the document to be laminated in the laminator infeed with the closed side first. The laminating process occurs automatically.

Note: To prevent the lamination foil from creasing, never feed the open side of the lamination foil first in the laminator infeed.

#### 3.Clearing jammed lamination foil

The device is equipped with an ABS switch (anti-blocking sliding switch) to clear foil jams quickly.

Proceed as follows if the lamination foil jams:

3.1 Switch the device off: Set the On/Off switch to OFF.

3.2 Slide the ABS switch fully to the left.

3.3 Hold the laminator firmly and pull the lamination foil together with the document to be laminated out of the laminator's infeed.

3.4 Slide the ABS switch fully to the right.

3.5 Clean the transport rollers of any deposits and residual adhesive by inserting a folded piece of paper in the laminator infeed, refer to Chapter "Cleaning the transport rollers".

Note: If foil jams occur repeatedly or jammed foil cannot be removed from the laminator, please contact the sales representative place where you purchased the device (refer to Guarantee).

#### Trimmer

The trimmer can be used to cut paper, card, photo paper and lamination foil.

1.Selecting the type of cut

The trimmer is equipped to complete three types of cut:

- straight cut,
- wave cut,
- perforation cut.

Note: The blades are accommodated in protective housing.

Select the type of cut you require, see Fig. 1:

1.1 Pull the setting lock on the cutting head upwards to the OPEN position.

1.2 Turn the rotating knob for the cut until the symbol related to the required cut is at the top.

1.3 Press the setting lock on the cutting head downwards to the LOCK position.

#### 2.Cutting material

2.1 Place the device on a stable, level surface with the cutting head facing up.

2.2 Slide the cutting head to one side of the guide rail

2.3 Slide the material to be cut under the transparent pressing rail at the required position.

Note: Observe the permissible quantity of material which may be cut, refer to Chapter "Intended Use" or "Technical Data".

Note: The visual positioning aids simplify correct alignment of the material to be cut.

2.4 Hold the material to be cut firmly with one hand so that it cannot slip when cut. Otherwise, the cut may be inaccurate.

2.5 To complete the cut, press the cutting head down and slide it along the guide rail to the other side, refer to Fig. 2.

Note: To prevent a faulty cutting edge, do not run the cutting head back again but remove the cut material directly after completing the cut.

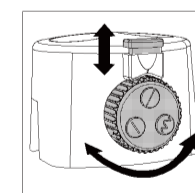


Fig. 1  
(similar to figure)

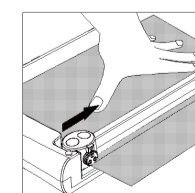


Fig. 2