



KitchenAid

Stand Mixer 5K45 Series, 5KSM45 - 5KSM200 Series

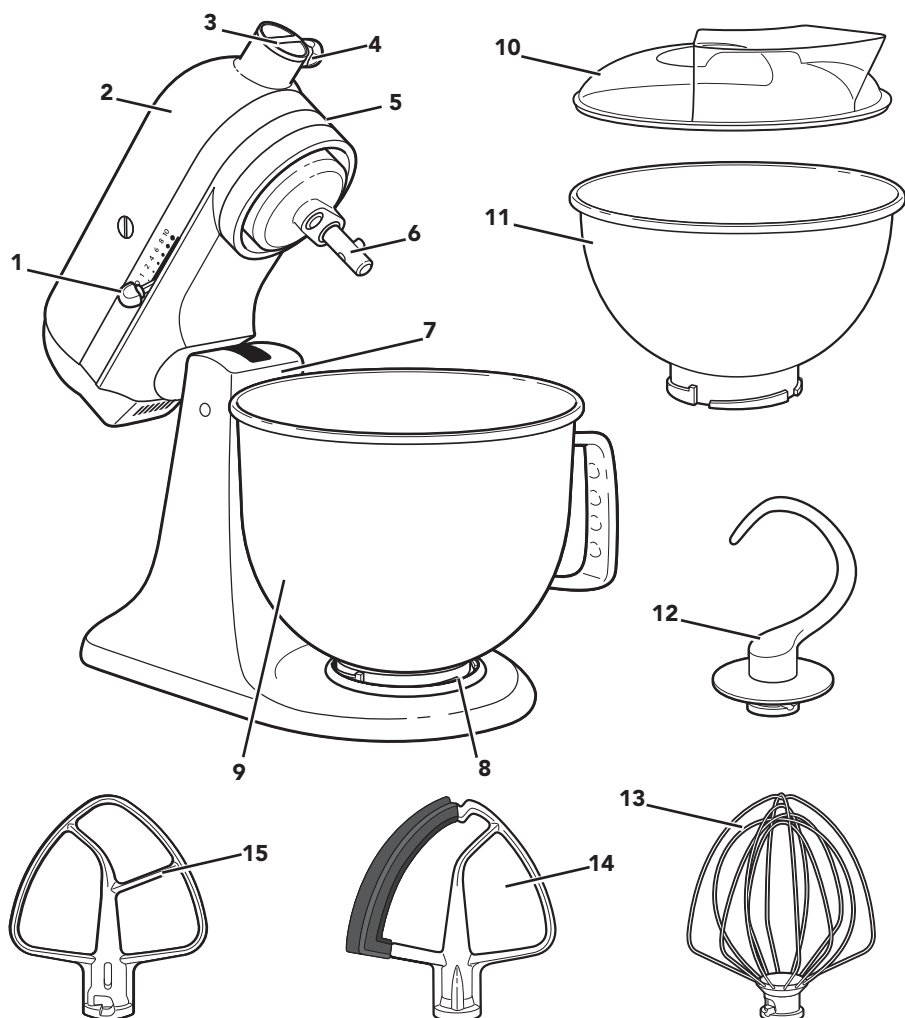


EN	Use and Care manual	2	NO	Håndbok for bruk og vedlikehold	149
DE	Gebrauchs- und Pflegeanleitung	19	FI	Käyttö- ja huolto-opas	165
FR	Manuel d'utilisation et d'entretien	35	DA	Vejledning til anvendelse og vedligehold	181
IT	Manuale d'uso e manutenzione	53	IS	Notenda & Meðhöndlunar handbók	197
NL	Gebruiks- en onderhoudshandleiding	69	RU	Руководство по эксплуатации и уходу	213
ES	Manual de uso y cuidado	85	PL	Instrukcja obsługi i konserwacji	229
PT	Manual de utilização e manutenção	101	CS	Návod k použití a údržbě	245
EL	Εγχειρίδιο Χρήσης και Φροντίδας	117	TR	Kullanım ve Bakım kılavuzu	261
SV	Handbok för skötsel och användning	133	AR	دليل الاستخدام والعناية	1





PARTS AND FEATURES



1 Speed Control Lever

2 Motor Head

3 Attachment Hub

4 Attachment Knob

5 Motor Head Locking Lever
(not shown)

6 Beater Shaft

7 Beater Height Adjustment Screw
(not shown)

8 Bowl Clamping Plate

9 Bowl**

10 Pouring Shield*

11 3 L Stainless Steel Bowl*

12 Dough Hook

13 Wire Whip

14 Flex Edge Beater*

15 Flat Beater

*Included with select models only. Also available as optional accessory.

**The Bowl design and material depend on the Stand Mixer model.





PRODUCT SAFETY

Your safety and the safety of others are very important.

We have provided many important safety messages in this manual and on your appliance. Always read and obey all safety messages.



This is the safety alert symbol.

This symbol alerts you to potential hazards that can kill or hurt you and others.

All safety messages will follow the safety alert symbol and either the word “DANGER” or “WARNING.” These words mean:

⚠ DANGER

You can be killed or seriously injured if you don't immediately follow instructions.

⚠ WARNING

You can be killed or seriously injured if you don't follow instructions.

All safety messages will tell you what the potential hazard is, tell you how to reduce the chance of injury, and tell you what can happen if the instructions are not followed.

IMPORTANT SAFEGUARDS

When using electrical appliances, basic safety precautions should always be followed, including the following:

1. Read all instructions. Misuse of appliance may result in personal injury.
2. To protect against risk of electrical shock, do not put Stand Mixer in water or other liquid.
3. This appliance is not intended for use by persons (including children) with reduced physical, sensory, or mental capabilities, or lack of experience and knowledge, unless they have been given supervision or instruction concerning use of the appliance by a person responsible for their safety.
4. European Union Only: Appliances can be used by persons with reduced physical, sensory or mental capabilities or lack of experience and knowledge if they have been given supervision or instruction concerning use of the appliance in a safe way and understand the hazards involved. Children shall not play with the appliance.
5. European Union Only: This appliance shall not be used by children. Keep the appliance and its cord out of reach of children.
6. Turn the appliance OFF, then unplug from the outlet when not in use, before assembling or disassembling parts and before cleaning. To unplug, grasp the plug and pull from the outlet. Never pull from the power cord.
7. Avoid contacting moving parts. Keep hands, hair, clothing, as well as spatulas and other utensils away from beater during operation to reduce the risk of injury to persons and/or damage to the Stand Mixer.
8. Do not operate any appliance with a damaged cord or plug or after the appliance malfunctions, or is dropped or damaged in any manner. Contact the manufacturer at their customer service telephone number for information on examination, repair, or adjustment.




PRODUCT SAFETY

9. The use of attachments not recommended or sold by KitchenAid may cause fire, electrical shock or injury.
10. Do not use the Stand Mixer outdoors.
11. Do not let the cord hang over edge of table or counter.
12. Remove Flat Beater, Wire Whip, or Dough Hook from Stand Mixer before washing.
13. Children should be supervised to ensure that they do not play with the appliance.
14. If the supply cord is damaged, it must be replaced by the manufacturer, its service agent, or similarly qualified persons in order to avoid a hazard.
15. Never leave the appliance unattended while it is in operation.
16. To avoid product damage, do not use the Stand Mixer Bowls in areas of high heat such as an oven, microwave, or on a stovetop.
17. Refer to the "Care and Cleaning" section for instructions on cleaning the surfaces in contact with food.
18. This appliance is intended to be used in household and similar applications such as:
 - staff kitchen areas in shops, offices, or other working environments;
 - farmhouses;
 - by clients in hotels, motels and other residential type environments;
 - bed and breakfast type environments.

SAVE THESE INSTRUCTIONS

ELECTRICAL REQUIREMENTS

**WARNING**



Electrical Shock Hazard

Plug into an earthed outlet.

Do not remove earth prong.

Do not use an adapter.

Do not use an extension cord.

Failure to follow these instructions can result in death, fire, or electrical shock.

Wattage:

300 W max.

For 5KSM125 - 5KSM200 Series

275 W max.

For 5K45, 5KSM45 - 5KSM100 Series

Voltage: 220-240 V

Hertz: 50-60 Hz

NOTE: If the plug does not fit in the outlet, contact a qualified electrician.

Do not modify the plug in any way.

Do not use an adapter.

Do not use an extension cord. If the power supply cord is too short, have a qualified electrician or service technician install an outlet near the appliance.





PRODUCT SAFETY


ELECTRICAL EQUIPMENT WASTE DISPOSAL

Scrapping the product

- This appliance is marked in compliance with European Directive 2012/19/EU, Waste Electrical and Electronic Equipment (WEEE).

- By ensuring this product is disposed of correctly, you will help prevent potential negative consequences for the environment and human health, which could otherwise be caused by inappropriate waste handling of this product.



- The symbol  on the product or on the accompanying documentation indicates that it should not be treated as domestic waste but must be taken to an appropriate collection centre for the recycling of electrical and electronic equipment.

For more detailed information about treatment, recovery and recycling of this product, please contact your local city office, your household waste disposal service, or the shop where you purchased the product.

DECLARATION OF CONFORMITY

This appliance has been designed, constructed and distributed in compliance with the safety requirements of EC Directives: 2014/35/EU, 2014/30/EU, 2009/125/EC and 2011/65/EU (RoHS Directive).



PRODUCT USAGE

SPEED CONTROL GUIDE

Speed	Action	Attachment	Description
1	Stir	Flat Beater Flex Edge Beater*	For slow stirring, combining, mashing, starting all mixing procedures. Use to add flour and dry ingredients to batter, and to add liquids to dry ingredients. Do not use Speed 1 to mix or knead yeast doughs.
2	Slow Mixing	Flat Beater Flex Edge Beater* Dough Hook	For slow mixing, mashing, faster stirring. Use to mix and knead yeast doughs, heavy batters and candies, start mashing potatoes or other vegetables, cut shortening into flour, and mix thin or splashy batters.
4	Mixing, Beating	Flat Beater Flex Edge Beater* Wire Whip	For mixing semi-heavy batters, such as cookies. Use to combine sugar and shortening and to add sugar to egg whites for meringues. Medium speed for cake mixes.
6	Beating, Creaming		For medium-fast beating (creaming) or whipping. Use to finish mixing cake, doughnut, and other batters. High speed for cake mixes.
8	Fast Beating, Whipping	Wire Whip	For whipping cream, egg whites, and boiled frostings.
10	Fast Whipping		For whipping small amounts of cream, egg whites, or for final whipping of mashed potatoes.

NOTE: The speed control lever can be set between the speeds listed in the above chart to obtain speeds 3, 5, 7, and 9 if a finer adjustment is required. Do not exceed Speed 2 when preparing yeast doughs as this may cause damage to the Stand Mixer.

ACCESSORY GUIDE

Accessory	Use to mix	Description
Flat beater Flex Edge Beater*	Normal to heavy mixtures:	Cakes, creamed frostings, candies, cookies, pie pastry, biscuits, meat loaf, mashed potatoes.
Wire Whip	Mixtures that need air incorporated:	Eggs, egg whites, heavy cream, boiled frostings, sponge cakes, mayonnaise, some candies.
Dough Hook	Mixing and kneading yeast doughs:	Breads, rolls, pizza dough, coffee cakes, buns.

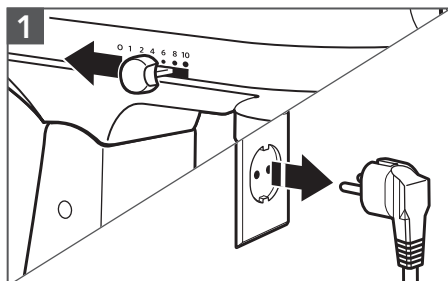
*Included with select models only. Also available as optional accessory.



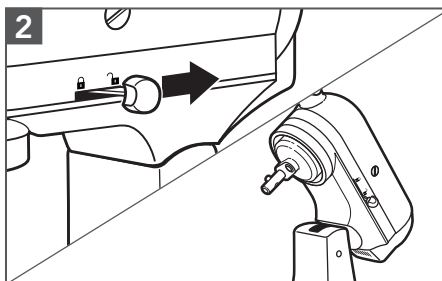


USING THE STAND MIXER

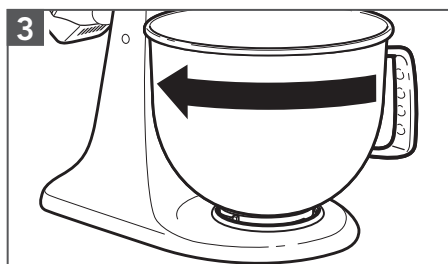
ATTACHING/REMOVING THE BOWL



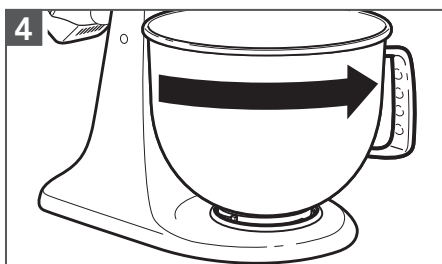
To attach Bowl: Turn speed control to "0." Unplug Stand Mixer.



Unlock and lift the Motor Head. Then, lock** the head to keep it lifted.



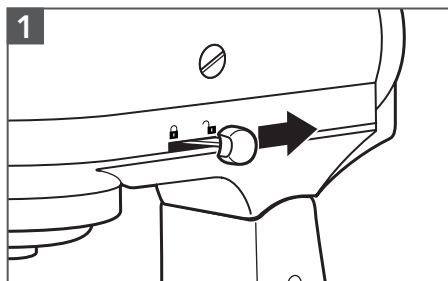
Place Bowl on Bowl Clamping Plate. Turn Bowl gently in clockwise direction.



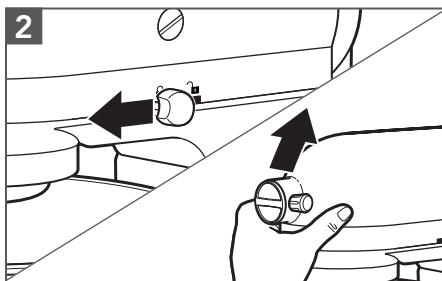
To remove Bowl: Repeat steps 1 and 2. Turn Bowl gently counterclockwise.

**Locking option is available on selected models.

LIFTING/LOWERING THE MOTOR HEAD



To lift motor head: Push the locking lever to the UNLOCK position and lift the head. Once lifted, the lever will automatically go back in LOCK position to keep the head lifted.



To put down motor head: Push the locking lever to UNLOCK and gently bring the head down. The locking lever will automatically go back in LOCK position when the head is down. Before mixing, test lock by attempting to raise motor head.

NOTE: Motor head should always be in lock position when using the Stand Mixer.





USING THE STAND MIXER

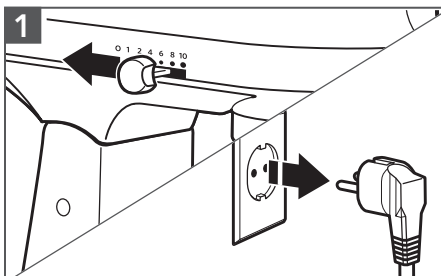
ATTACHING/REMOVING THE FLAT BEATER, FLEX EDGE BEATER*,
WIRE WHIP, OR DOUGH HOOK

⚠ WARNING

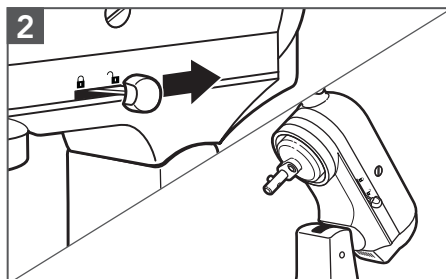
Injury Hazard

Unplug mixer before touching beaters.

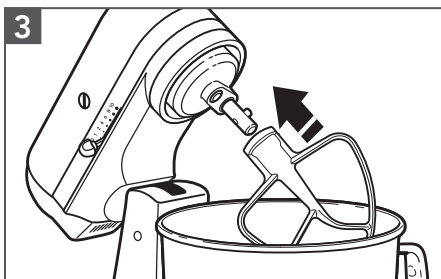
Failure to do so can result in broken bones, cuts, or bruises.



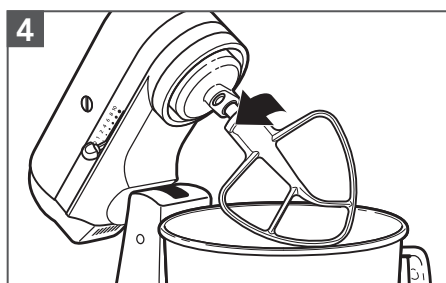
To attach accessory: Turn speed control to "0". Unplug Stand Mixer.



Unlock and lift the Motor Head. Then, lock** the head to keep it lifted.



Slip accessory onto beater shaft and press upward as far as possible. Then, turn accessory to the right, hooking accessory over the pin on the shaft.



To remove accessory: Repeat steps 1 and 2. Press accessory upward as far as possible and turn to the left. Then pull accessory from the beater shaft.

*Included with select models only. Also available as optional accessory.

**Locking option is available on selected models.

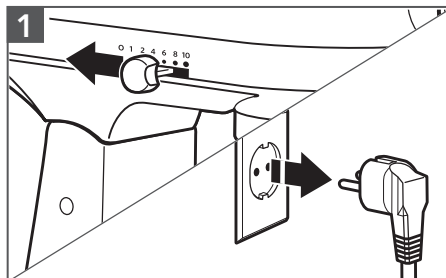




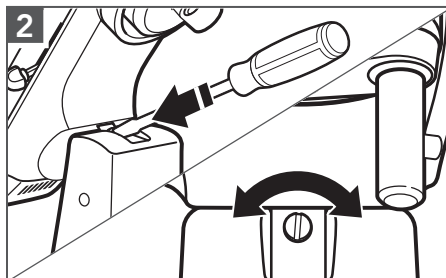
USING THE STAND MIXER

BEATER TO BOWL CLEARANCE

Your Stand Mixer is adjusted at the factory so the Flat Beater just clears the bottom of the Bowl. If, for any reason, the Flat Beater hits the bottom of the Bowl or is too far away from the Bowl, you can correct clearance easily.



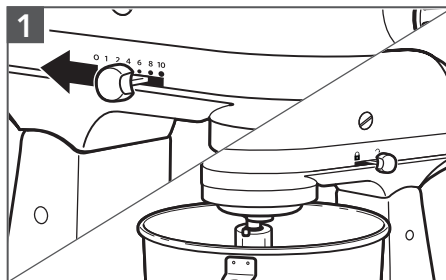
Turn speed control to "0". Unplug Stand Mixer.



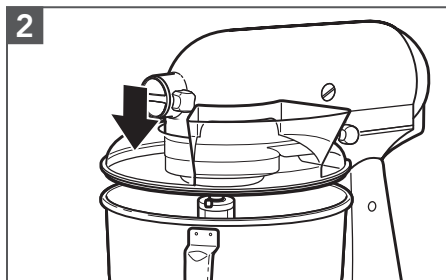
Lift motor head. Turn screw slightly counterclockwise (left) to raise Flat Beater or clockwise (right) to lower Flat Beater. Make adjustment with Flat Beater, so it just clears surface of Bowl. If you overadjust the screw, the Bowl lock lever may not lock into place.

NOTE: When properly adjusted, the Flat Beater will not strike on the bottom or side of the Bowl. If the Flat Beater or the Wire Whip is so close that it strikes the bottom of the Bowl, coating may wear off the beater or wires on whip may wear.

PLACING/REMOVING THE POURING SHIELD*



To place Pouring Shield: Turn speed control to "0". Unplug Stand Mixer. Attach your chosen accessory. See the "Attaching/removing the Flat Beater, Wire Whip, or Dough Hook" section.



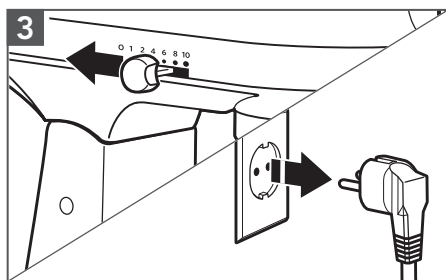
From the front of the Stand Mixer, slide the Pouring Shield over the Bowl until the shield is centred. The bottom rim of the shield should fit within the bowl.

*Included with select models only. Also available as an optional accessory.

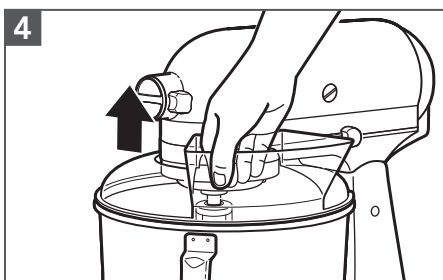




USING THE STAND MIXER



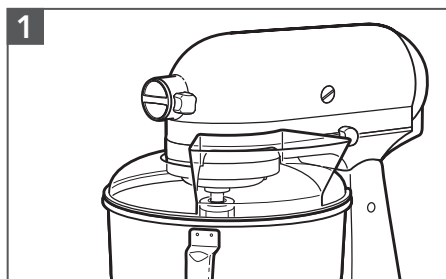
To remove Pouring Shield: Turn speed control to "0". Unplug Stand Mixer.



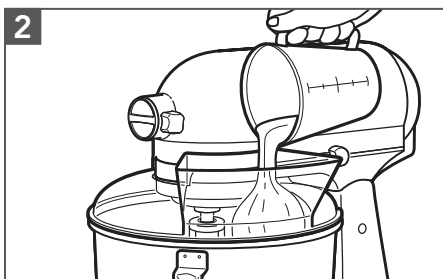
Lift the front of the Pouring Shield clear of the Bowl rim and pull forward. Remove attachment and Bowl.

USING THE POURING SHIELD*

Use the Pouring Shield to avoid having ingredients splashing out of the Bowl when mixing, as well as to easily pour ingredients in the Bowl while mixing.



For best results, rotate the shield so the motor head covers the U-shaped gap in the shield. The pouring chute will be just to the right of the attachment hub as you face the Stand Mixer.



Pour the ingredients into the Bowl through the pouring chute.

*Included with select models only. Also available as an optional accessory.

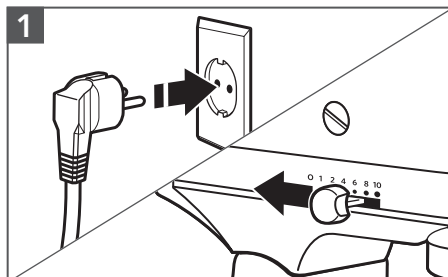




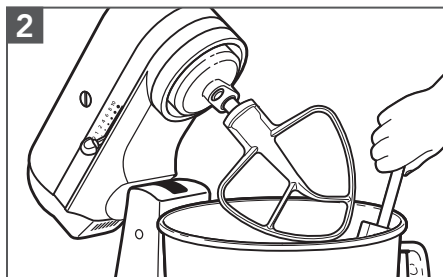
USING THE STAND MIXER

OPERATING THE SPEED CONTROL

NOTE: The Stand Mixer may warm up during use. Under heavy loads with extended mixing time, the top of the unit may become hot. This is normal.



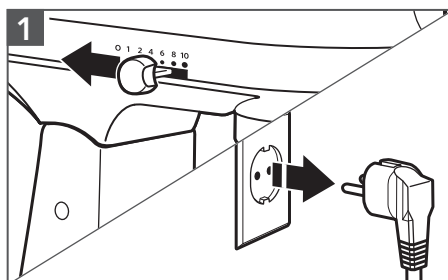
Plug Stand Mixer into proper electrical outlet. Always set speed control lever on lowest speed to start, then gradually increase speed to avoid splashing ingredients. See "Speed control guide" chart.



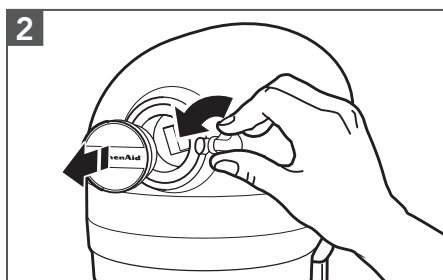
Do not scrape Bowl while Stand Mixer is operating. The Bowl and beater are designed to provide thorough mixing without frequent scraping. Scraping the Bowl once or twice during mixing is usually sufficient.

OPTIONAL ATTACHMENTS

KitchenAid offers a wide range of optional attachments such as food grinders or pasta makers. They may be attached to the Stand Mixer attachment power shaft, as shown here.



To attach: Turn speed control to "0". Unplug Stand Mixer.

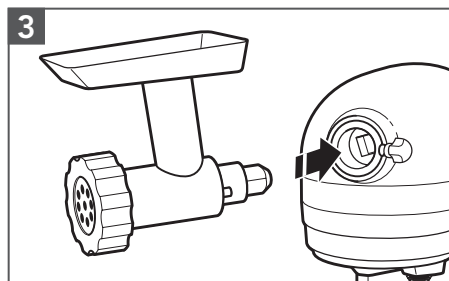


Loosen attachment knob by turning it counterclockwise. Remove attachment hub cover.

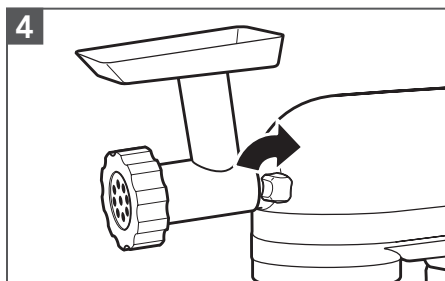




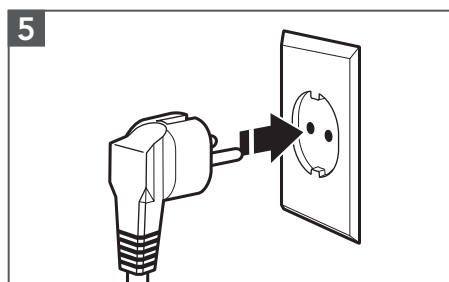
USING THE STAND MIXER



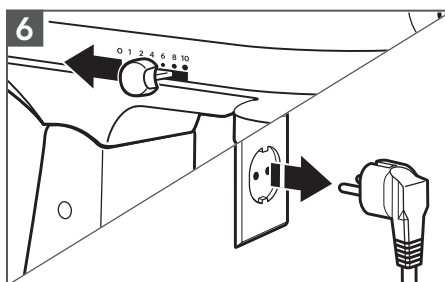
Insert attachment shaft housing into attachment hub, making certain that attachment power shaft fits into square attachment hub socket. It may be necessary to rotate attachment back and forth. When attachment is in proper position, the pin on the attachment will fit into the notch on the hub rim.



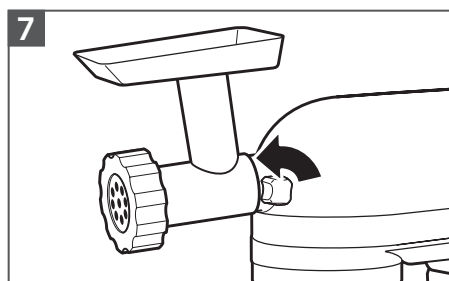
Tighten attachment knob by turning clockwise until attachment is completely secured to Stand Mixer. Plug into proper electrical outlet.



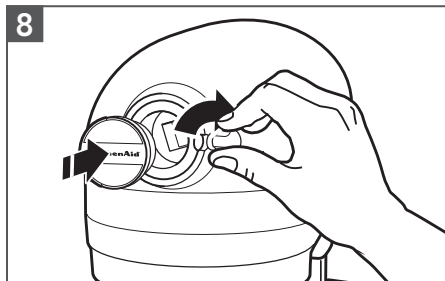
Plug into proper electrical outlet.



To remove: Turn speed control to "0". Unplug Stand Mixer.



Loosen attachment knob by turning it counterclockwise. Rotate attachment slightly back and forth while pulling out.



Replace attachment hub cover. Tighten attachment knob by turning it clockwise.

NOTE: See the Use and Care Guide of each specific attachment for recommended speed settings and operating times.





CARE AND CLEANING

WARNING

Electrical Shock Hazard



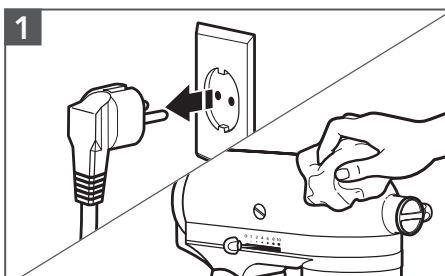
Plug into an earthed outlet.

Do not remove an earth prong.

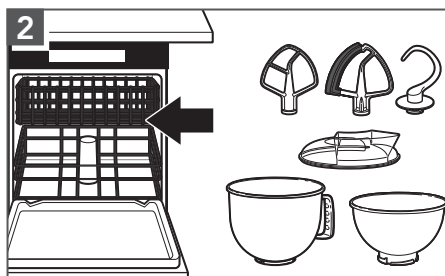
Do not use an adapter.

Do not use an extension cord.

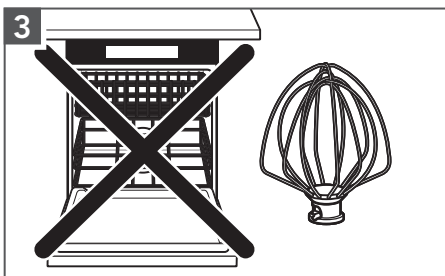
Failure to follow these instructions can result in death, fire, or electrical shock.



Always be sure to unplug Stand Mixer before cleaning. Wipe Stand Mixer with a soft, damp cloth. Do not use household/commercial cleaners. Wipe off beater shaft frequently, removing any residue that may accumulate. Do not immerse in water.



Bowl, Pouring Shield*, white Flat Beater, Flex Edge Beater*, and white Dough Hook may be washed in a dishwasher. Or, clean them thoroughly in hot sudsy water and rinse completely before drying. Do not store beaters on shaft.




IMPORTANT: The Wire Whip is not dishwasher-safe. Clean it thoroughly in hot sudsy water and rinse completely before drying. Do not store Wire Whip on shaft.

*Included with select models only. Also available as an optional accessory.





TROUBLESHOOTING

	⚠ WARNING
	Electrical Shock Hazard
	Plug into an earthed outlet.
	Do not remove an earth prong.
	Do not use an adapter.
	Do not use an extension cord.
	Failure to follow these instructions can result in death, fire, or electrical shock.

Problem	Solution
If Stand Mixer warms up during use:	Under heavy loads with extended mixing time periods, you may not be able to comfortably touch the top of the unit. This is normal.
The Stand Mixer emit a pungent odor:	This is common with electric motors, especially when new.
If the Flat Beater hits the Bowl:	Stop the Stand Mixer. See the "Beater to Bowl clearance" section and adjust the beater to Bowl clearance.
If your Stand Mixer should fail to operate, please check the following:	Is the Stand Mixer plugged in?
	Is the fuse in the circuit to the Stand Mixer in working order? If you have a circuit breaker box, be sure the circuit is closed.
	Turn off the Stand Mixer for 10-15 seconds, then turn it back on. If the Stand Mixer still does not start, allow it to cool for 30 minutes before turning it back on.
If the problem cannot be corrected:	See the "Terms of KitchenAid Guarantee ("Guarantee")" section.
	Do not return the Stand Mixer to the retailer; retailers do not provide service.





TERMS OF KITCHENAID GUARANTEE ("GUARANTEE")

Covering U.K. - Ireland - South Africa - UAE

KitchenAid Europa, Inc., Nijverheidslaan 3, Box 5, 1853 Strombeek-Bever, Belgium ("Guarantor") grants the end-customer, who is a consumer, a Guarantee pursuant to the following terms.

FOR U.K.:

The Guarantee applies in addition to and does not limit or affect the statutory warranty rights of the end-customer against the seller of the product. In summary, the Consumer Rights Act 2015 says products must be as described, fit for purpose and of satisfactory quality. During the expected lifespan of your product your legal rights entitle you to the following:

- Up to 30 days: if your product is faulty, then you can get an immediate refund.
- Up to six months: if your product can't be repaired or replaced, then you're entitled to a full refund, in most cases.
- Up to six years: if your product does not last a reasonable length of time you may be entitled to some money back.

These rights are subject to certain exceptions. For detailed information please visit the Citizens Advice website www.adviceguide.org.uk or call 03454 04 05 06.

FOR IRELAND:

The Guarantee applies in addition to and does not limit or affect the statutory warranty rights of the end-customer against the seller of the product under the European Communities (Certain Aspects of the Sale of Consumer Goods and Associated Guarantees Regulations 2003 (S.I. No. 11/2003)) and other enactments governing the sale of consumer goods.

FOR SOUTH AFRICA:

The Guarantee applies in addition to and does not limit or affect the statutory warranty rights of the end-customer against the seller of the product. In summary, the Consumer Protection Act, 2008 says that products must be: (i) reasonably suitable for the purpose for which they are intended; (ii) in good working order, of good quality and free of any defects; (iii) useable and durable for a reasonable period of time, having regard to the use to which they would normally be put and to all the surrounding circumstances; and (iv) in compliance with any applicable standards or any other public regulations.

During the expected lifespan of your product and where the products are not purchased online, your legal rights will entitle you to the following:

- You will be entitled to a full refund, if you did not have the opportunity to examine the product before delivery and if you rejected delivery of the product on the basis that the type and quality of the product was not as reasonably expected or did not reasonably conform to the material specifications.
- Within 5 business days after delivery: you may rescind your purchase and request a refund, if your purchase resulted from direct marketing.
- Within 10 business days after delivery: you will be entitled to a full refund, if it is found that the product was unsuitable for a particular purpose specifically communicated to you by the Guarantor.
- Within 15 business days after delivery: you will be entitled to a refund if: (i) the product was not delivered to you; or (ii) if you returned the product to the Guarantor.
- Within 6 months after delivery: you will be entitled to a refund or a replacement product, if the product is defective or fails to operate in terms of its specifications.





TERMS OF KITCHENAID GUARANTEE ("GUARANTEE")

Where you have purchased a product online your legal rights will be governed by the Electronic Communications and Transactions Act, 2002 and you will be entitled to the following:

- Within 7 days after conclusion of the transaction or after delivery: you may cancel your purchase without reason and without penalty.
- Within 30 days of the date of cancellation of the transaction: you will be entitled to receive a refund, if you have already made payment.
- You will only be liable for the direct costs of returning the product to the Guarantor.

FOR UAE:

The Guarantee applies in addition to and does not limit or affect the statutory warranty rights of the end-customer against the seller of the product.

1) SCOPE AND TERMS OF THE GUARANTEE

a) The Guarantor grants the Guarantee for the products mentioned under Section 1.b) which a consumer has purchased from a seller or a company of the KitchenAid-Group within the following countries: U.K., Ireland, or South Africa, or the United Arab Emirates (UAE).

b) The Guarantee period depends on the purchased product and is as follows:

5KSM125 - 5KSM200 Five years full guarantee from date of purchase.

5K45, 5KSM45 - 5KSM100 Two years full guarantee from date of purchase.

c) The Guarantee period commences on the date of purchase, i.e. the date on which a consumer purchased the product from a dealer or a company of the KitchenAid-Group.

d) The Guarantee covers the defect-free nature of the product.

e) The Guarantor shall provide the consumer with the following services under this Guarantee, at the choice of the Guarantor, if a defect occurs during the Guarantee period:

- Repair of the defective product or product part, or
- Replacement of the defective product or product part. If a product is no longer available, the Guarantor is entitled to exchange the product for a product of equal or higher value.

f) If the consumer wishes to make a claim under the Guarantee, the consumer has to contact the country specific KitchenAid service centres or the Guarantor directly at KitchenAid Europa, Inc. Nijverheidslaan 3, Box 5, 1853 Strombeek-Bever, Belgium;

Email-Address U.K.: CONSUMERCARE.UK@kitchenaid.eu

Email-Address IRELAND: CONSUMERCARE.IE@kitchenaid.eu

Toll Free Number U.K. & IRELAND: **00 800 381 040 26**

FOR SOUTH-AFRICA:

Our local KitchenAid Distributor:

KitchenAid Africa
PO Box 52102
V&A Waterfront
Cape Town
8002





TERMS OF KITCHENAID GUARANTEE ("GUARANTEE")

Contact our distributor:

Telephone: +27 21 555 0700

You can contact our Customer Service Centre for Small Domestic Appliances from 8.30 am to 1.00pm and from 1.30 pm to 5.00 pm or write to us at the following address: hello@kitchenaidafrica.com

FOR UAE:

AL GHANDI ELECTRONICS.

POST BOX NO. 9098,

DUBAI, UNITED ARAB EMIRATES

Toll free number: +971 4 2570007

g) The costs of repair, including spare parts, and any postage costs (if applicable) for the delivery of a defect-free product or product part shall be borne by the Guarantor. The Guarantor shall also bear the postage costs for returning the defective product or product part if the Guarantor or the country specific KitchenAid customer service centre requested the return of the defective product or product part. However, the consumer shall bear the costs of appropriate packaging for the return of the defective product or product part.

h) To be able to make a claim under the Guarantee, the consumer must present the receipt or invoice of the purchase of the product.

2) LIMITATIONS OF THE GUARANTEE

a) The Guarantee applies only to products used for private purposes and not for professional or commercial purposes.

b) The Guarantee does not apply in the case of normal wear and tear, improper or abusive use, failure to follow the instructions for use, use of the product at the wrong electrical voltage, installation and operation in violation of the applicable electrical regulations, and use of force (e.g. blows).

c) The Guarantee does not apply if the product has been modified or converted, e.g. conversions from 120 V products to 220-240 V products.

d) The provision of Guarantee services does not extend the Guarantee period, nor does it initiate the commencement of a new Guarantee period. The Guarantee period for installed spare parts ends with the Guarantee period for the entire product.

e) FOR SOUTH-AFRICA & UAE ONLY:

Further or other claims, in particular claims for damages, are excluded unless liability is mandatory by law.

After expiry of the Guarantee period or for products for which the Guarantee does not apply, the KitchenAid customer service centres are still available to the end-customer for questions and information.

Further information is also available on our website:

- For U.K. & Ireland www.kitchenaid.eu

- For South-Africa: www.kitchenaidafrica.com

- For UAE: www.KitchenAid-MEA.com

PRODUCT REGISTRATION

Register your new KitchenAid appliance now: <http://www.kitchenaid.eu/register>

©2020 All rights reserved.

KITCHENAID and the design of the Stand Mixer are trademarks in the U.S. and elsewhere.



