

BT-8500

Quick Installation Guide

03-2021 / v1.1

Edimax Technology Co., Ltd.

No. 278, Xinhu 1st Rd., Neihu Dist., Taipei City, Taiwan

Email: support@edimax.com.tw

Edimax Technology Europe B.V.

Fijenhof 2, 5652 AE Eindhoven, The Netherlands

Email: support@edimax.nl

Edimax Computer Company

530 Technology Drive Suite 100, Irvine, CA 92618, USA

Email: support@edimax.us

Contents

I. Product Information & Safety Information	1
I-1. Package Contents	2
I-2. System Requirement	2
I-3. Hardware Interface	2
II. Hardware Installation	3
III. Driver Installation	4
IV. Adding Devices	6
V. Uninstall A Driver	9

I. Product Information & Safety Information

The Edimax BT-8500 dual mode (BR/EDR + LE) real Bluetooth 5.0 is a Nano USB adapter that supports data rate maximum 3 Mbps.

The BT-8500 is a portable ultra-small design USB adapter with USB 2.0, you can plug into any USB port and enjoy incredible high-speed Bluetooth 5.0.

Please install the unit with the safety restrictions outlined below:

- Do not place the USB adapter in or near hot/humid places, such as a kitchen or bathroom.
- There are no user-serviceable parts inside the USB adapter. If you experience problems with the USB adapter, please contact your dealer and ask for help.
- The USB adapter is an electrical device, if it becomes wet for any reason, stop using it immediately.

You can find all supporting documents from the link below or via QR Code:

<https://www.edimax.com/download>

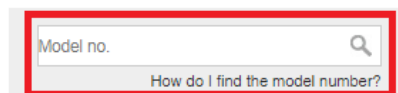


(Once you've visited the Edimax official website, please enter model no. "BT-8500" into the search box to search for your product.)

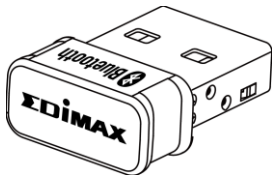
Download

To select your product and find related download materials, enter the model number into the search box on the right side or follow the simple steps below:

*Feel free to contact us anytime if you need help or if you can't find your product.



I-1. Package Contents



BT8500 USB Adapter

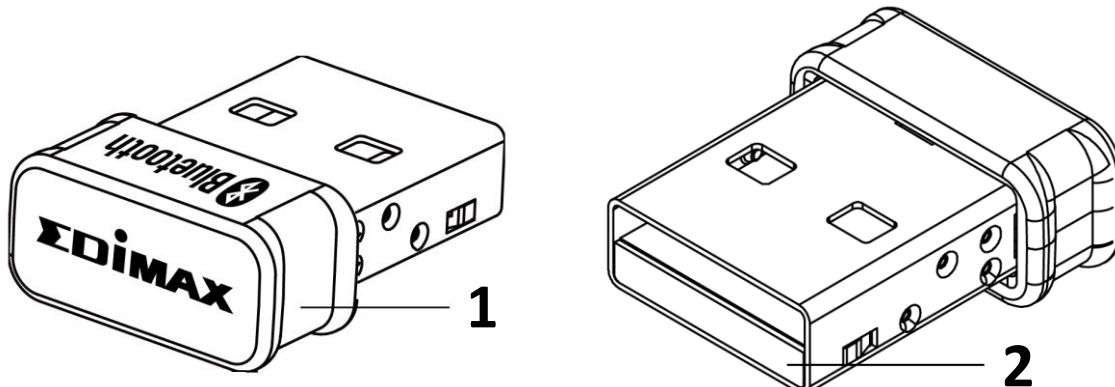


Quick Installation Guide

I-2. System Requirement

- Windows 8.1/10 32bit/64bit or above
- Linux: kernel 2.6.32~4.15, suggest 4.4 (after)
- 1 x USB 2.0 Type A

I-3. Hardware Interface



No.	Description
1	Case
2	USB 2.0 Type A

II. Hardware Installation

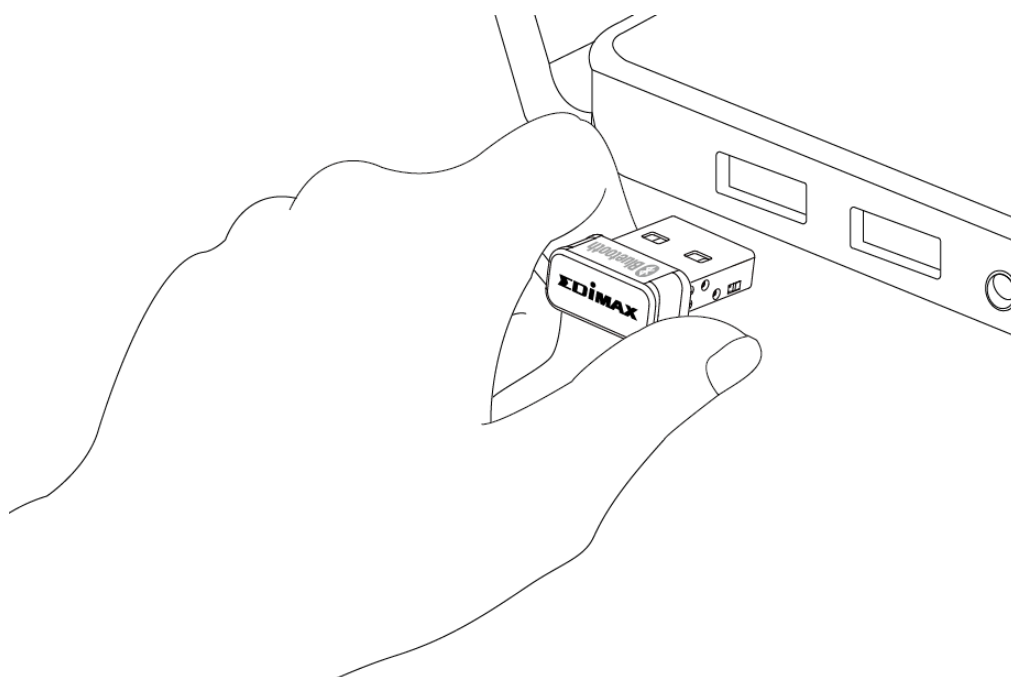
Please follow the steps below to install your Bluetooth USB adapter,

1. Turn on your PC.



If your PC or laptop has Bluetooth capability, please disable Bluetooth before using the Bluetooth USB adapter.

2. Insert the USB adapter into an available USB port of your computer.



Never use force to insert the USB adapter.

III. Driver Installation

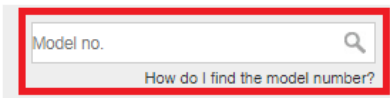
Please follow the steps below to install the driver,


1. Go to Edimax website (<https://www.edimax.com/edimax/global/>).
2. Enter model no. "BT-8500" into the search box to search for your product, and Go to Download, and download the driver.

Download

To select your product and find related download materials, enter the model number into the search box on the right side or follow the simple steps below:

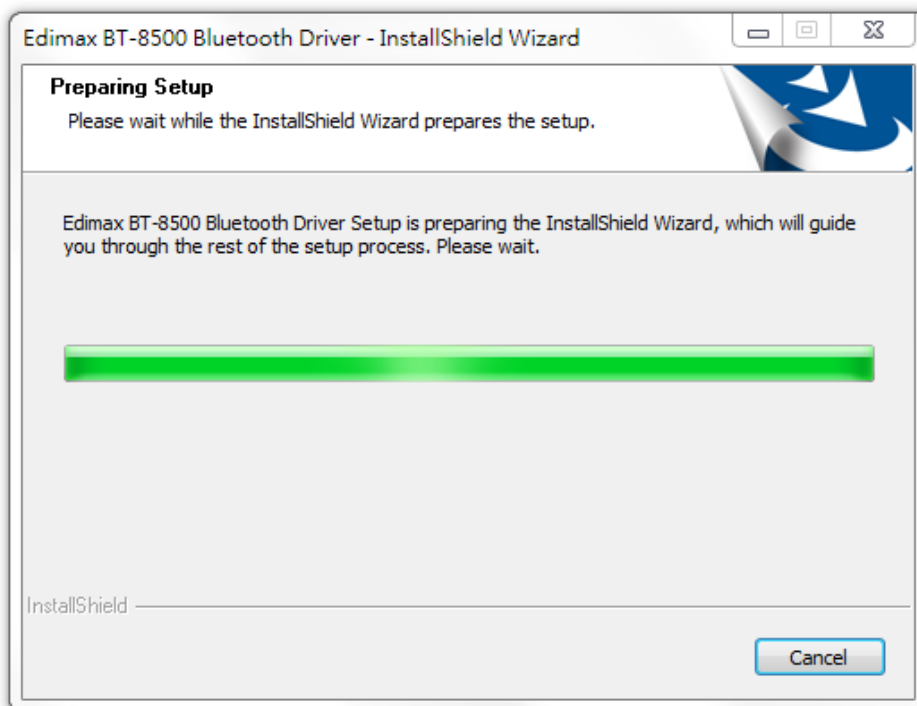
*Feel free to contact us anytime if you need help or if you can't find your product.



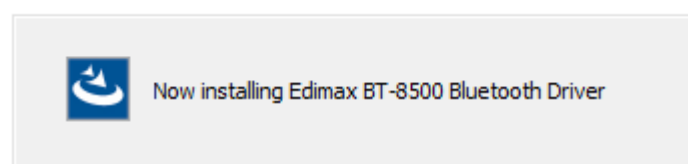
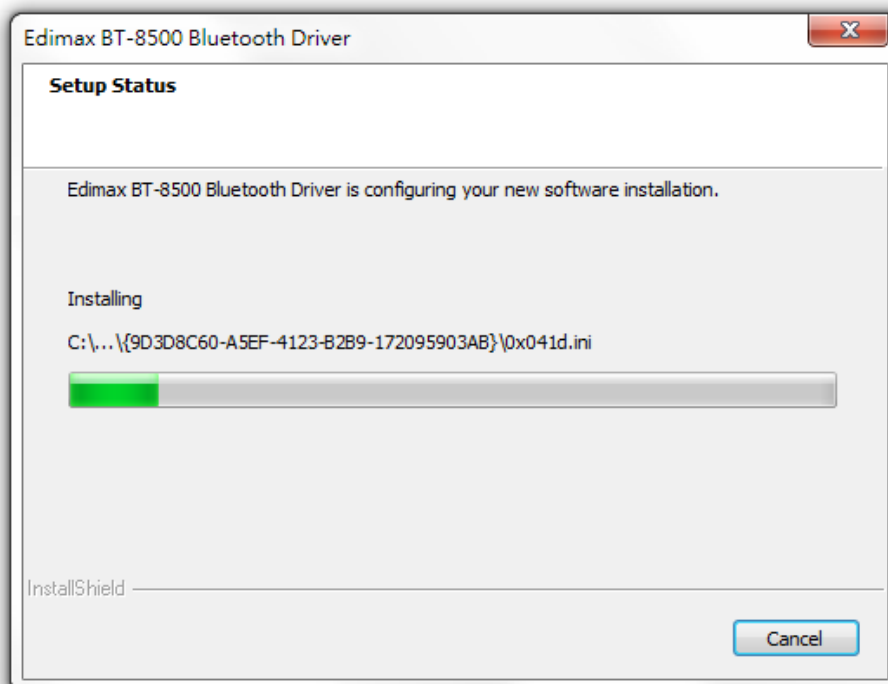
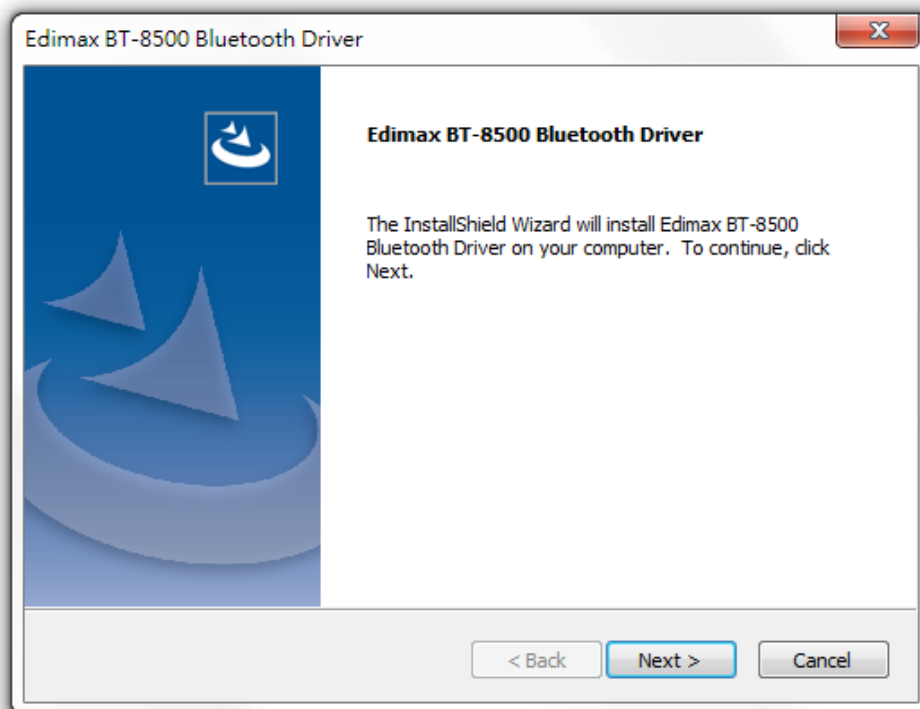
Model no. 

[How do I find the model number?](#)

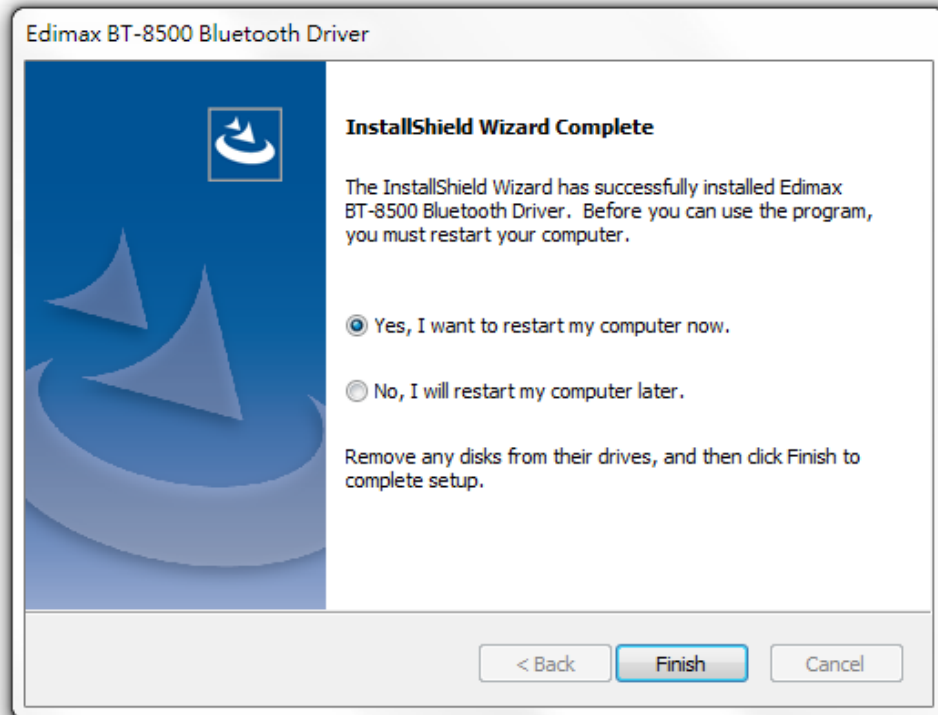
3. Open the folder and double click  setup.exe to install the driver.



4. Click "Next" to continue and follow the instructions on-screen until installation is complete.



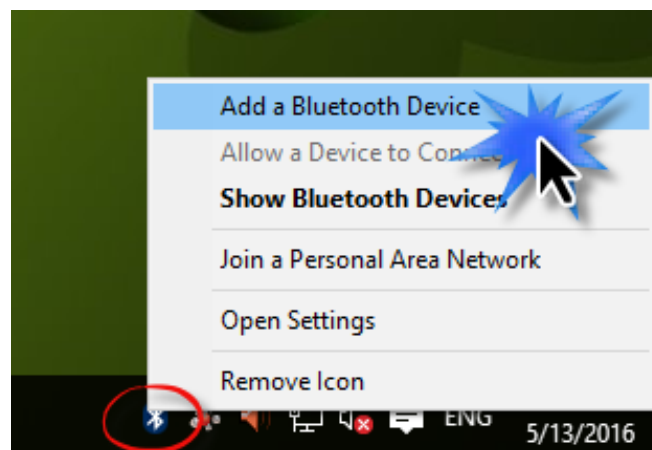
5. Select restart your computer now or later and click “Finish”.



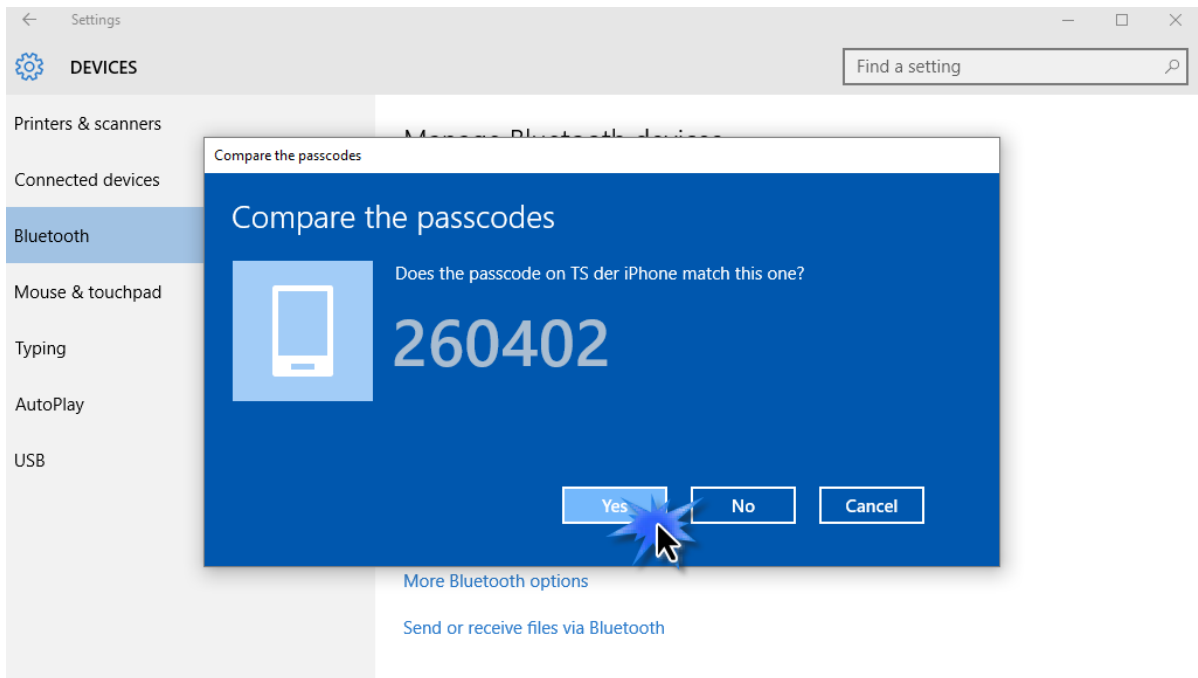
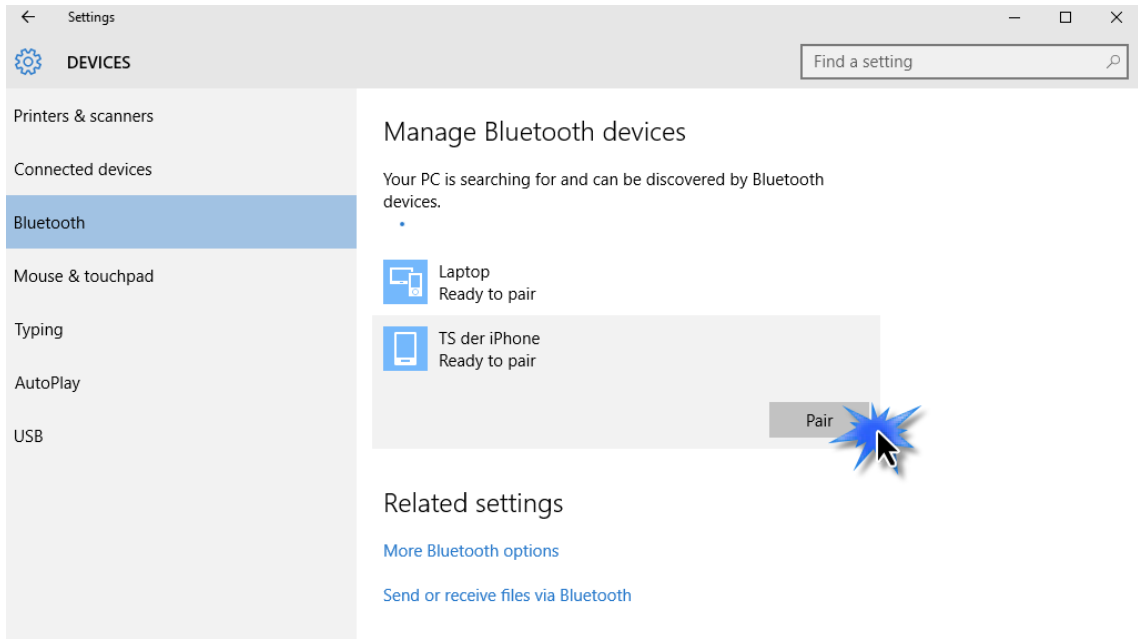
IV. Adding Devices

Please follow the steps below to add the Bluetooth devices,

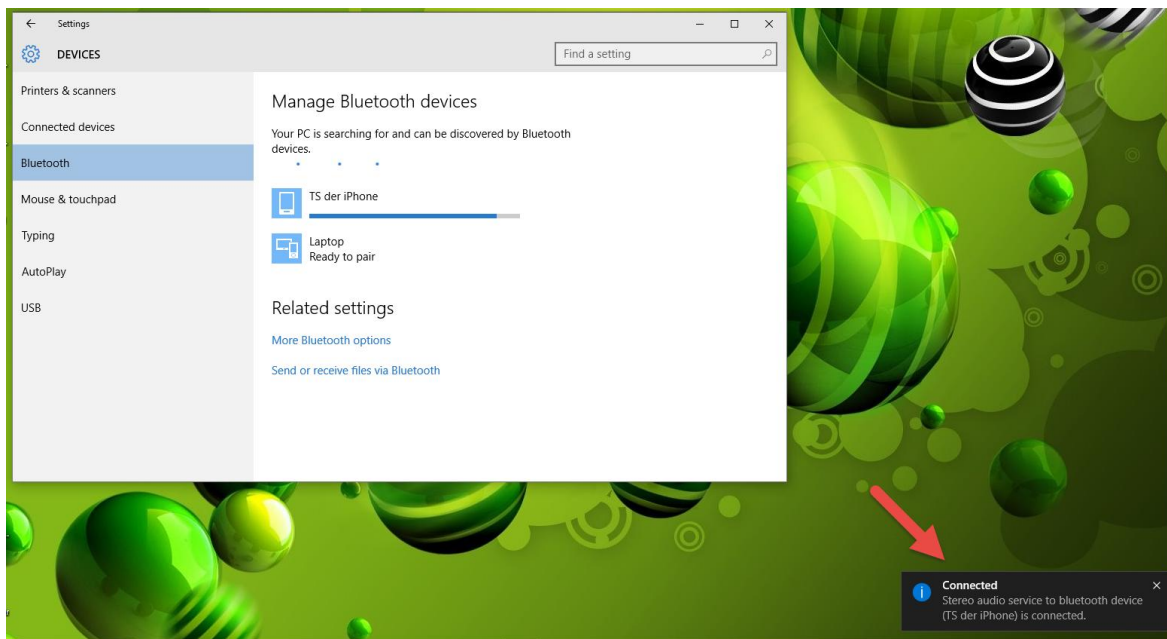
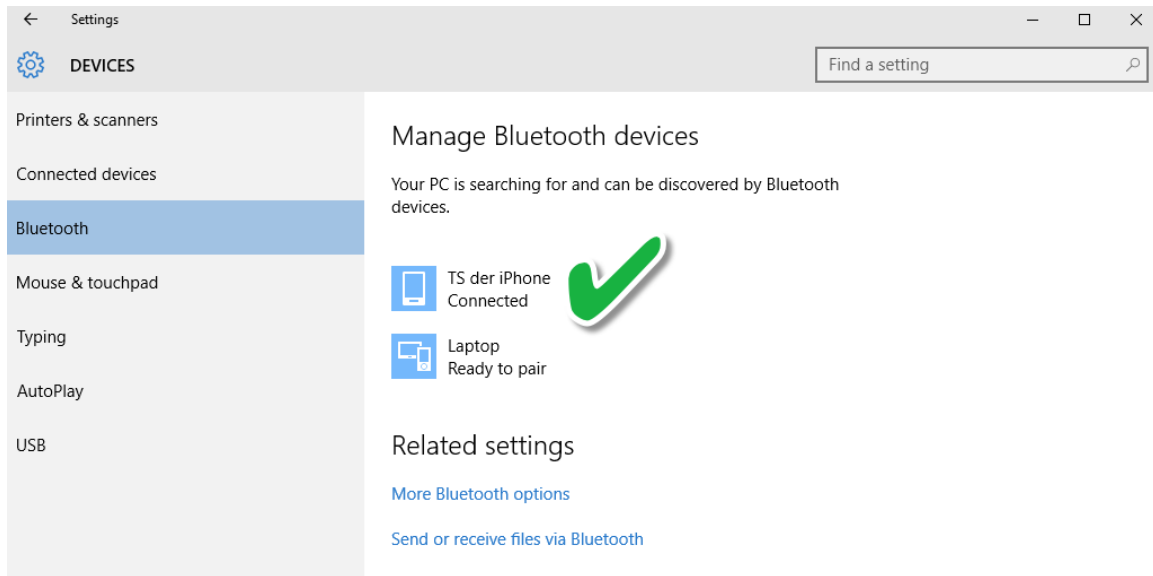
1. Go to Windows Bluetooth settings by using the search bar, or by right clicking the Bluetooth icon in the task bar and choosing Add a Bluetooth Device.



2. Select your Bluetooth device and click Pair and then confirm the passcode.



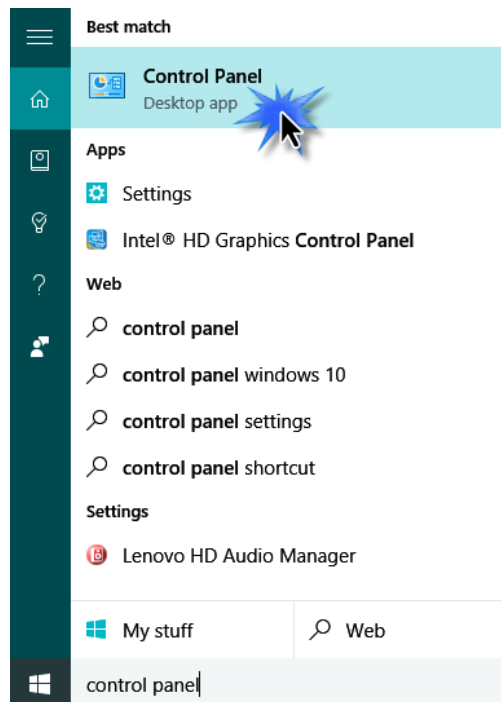
3. Your device is now ready to use when it shows “Connected”.



V. *Uninstall A Driver*

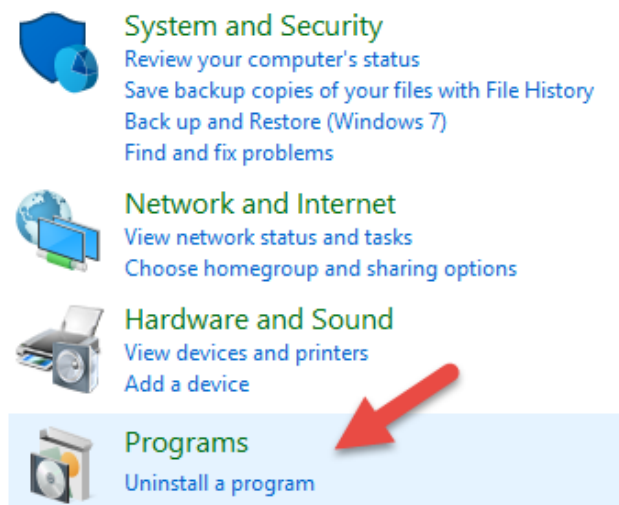
Please follow the steps below to uninstall a driver for your USB adapter,

1. Open Control Panel using the Start menu or Search function.



2. Select Uninstall a program under the Programs category.

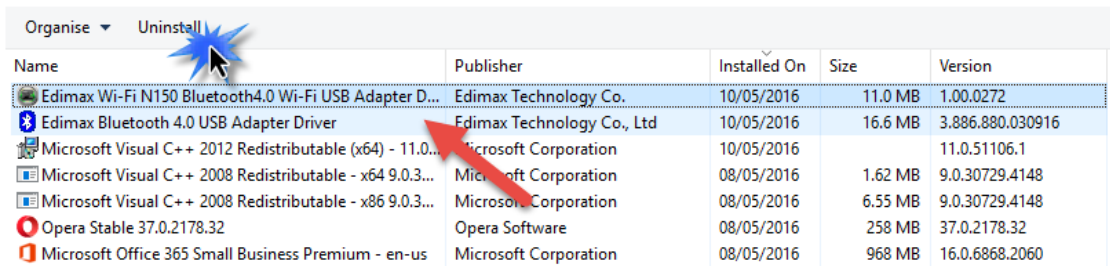
Adjust your computer's settings



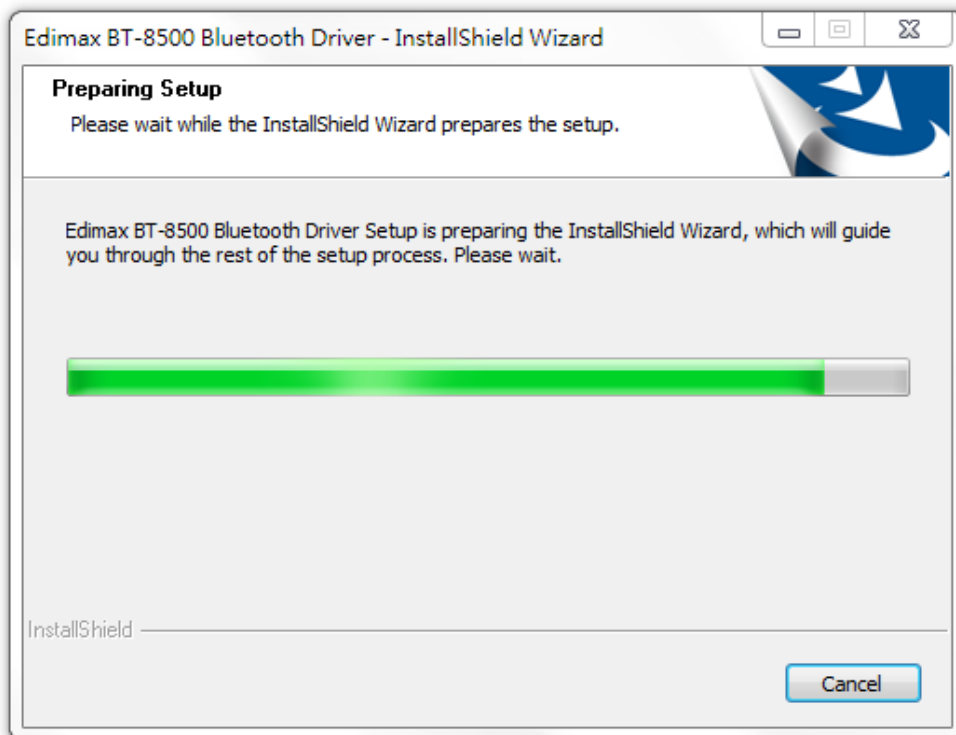
3. Select Edimax BT-8500 (or similar) and Edimax Bluetooth 5.0 (or similar) and click Uninstall.

Uninstall or change a program

To uninstall a program, select it from the list and then click Uninstall, Change or Repair.



Name	Publisher	Installed On	Size	Version
Edimax Wi-Fi N150 Bluetooth4.0 Wi-Fi USB Adapter D...	Edimax Technology Co.	10/05/2016	11.0 MB	1.00.0272
Edimax Bluetooth 4.0 USB Adapter Driver	Edimax Technology Co., Ltd	10/05/2016	16.6 MB	3.886.880.030916
Microsoft Visual C++ 2012 Redistributable (x64) - 11.0...	Microsoft Corporation	10/05/2016		11.0.51106.1
Microsoft Visual C++ 2008 Redistributable - x64 9.0.3...	Microsoft Corporation	08/05/2016	1.62 MB	9.0.30729.4148
Microsoft Visual C++ 2008 Redistributable - x86 9.0.3...	Microsoft Corporation	08/05/2016	6.55 MB	9.0.30729.4148
Opera Stable 37.0.2178.32	Opera Software	08/05/2016	258 MB	37.0.2178.32
Microsoft Office 365 Small Business Premium - en-us	Microsoft Corporation	08/05/2016	968 MB	16.0.6868.2060



4. Click Yes to continue.



5. Select restart your computer now or later and click “Finish”.

